

Branding
M E R C H A N D I S E

2025 New & Best





pro towels





BLANKETS



BEACH TOWELS



GOLF TOWELS



FITNESS TOWELS



Sustainable Selection

Thoughtfully Made, Responsibly Sourced

Our sustainable collection combines the latest in eco-friendly design with the same attention to quality and style you love. Each piece is made to minimize its environmental impact and is made from renewable materials.



Now Offering TruColor™ Decoration on Handled Mugs!

Available to print one or two sided



Ask sales rep for available drinkware styles and imprint information.

STN29



Stanley® 40oz The Quencher H2.0 Flowstate™ Tumbler

A double-wall vacuum insulated tumbler with reusable straw and easy-to-carry handle. Constructed of 18/8 Stainless Steel. Keeps liquids cold for up to 11 hours, hot for up to 7 hours. Lifetime warranty.

24	48	96	244
73.50	69.71	65.92	58.33 4C

*Pricing, color, and stock subject to change. Please confirm with sales rep for availability.



STN28



Stanley® 30oz The Quencher H2.0 Flowstate™ Tumbler

A double-wall tumbler with reusable straw and easy-to-carry handle. Constructed of 90% recycled 18/8 Stainless Steel. Keeps liquids cold for up to 9 hours, hot for up to 5 hours. Lifetime warranty.

24	48	96	244
53.19	51.56	49.94	46.68 4C

*Pricing, color, and stock subject to change. Please confirm with sales rep for availability.



STN01

NEW

Stanley® 8oz Classic Easy Fill Wide Mouth Flask

A packable, leak-proof flask featuring a never-lose cap and wide mouth opening. Constructed of 18-8 Stainless Steel. Lifetime warranty.

12	25	50	100	
42.39	41.04	39.69	36.99	4C

* Pricing subject to change. Please confirm with sales rep.



STN13

NEW

Stanley® 8oz Lifted Spirits Hip Flask

A leak-proof, powder coated flask featuring a machined Steel attached cap and wide mouth opening. Constructed of 1.0mm 18-8 Stainless Steel. Lifetime warranty.

12	25	50	100	
62.69	60.77	58.84	54.99	4C

* Pricing subject to change. Please confirm with sales rep.



STN33

NEW

Stanley® 20oz All Day Slim Bottle

A leak-proof, double-wall vacuum insulated bottle featuring a removable collar for ice fill and easier cleaning. Constructed of 18-8 Recycled Stainless Steel. Keeps liquids cold for up to 4 hours. Lifetime warranty.

12	25	50	100	
51.49	49.87	48.24	44.99	4C

* Pricing subject to change. Please confirm with sales rep.



SL187PR

NEW

34oz Urban Peak® Pinnacle Flip Straw Tumbler

Stainless Steel, dual-wall, Copper-lined, vacuum-insulated liner. Powder-coated finish. Features a screw-on lid with metal handle and a built-in flip straw. Lead-free vacuum seal. 1-year limited warranty. XFactor 10X

12	25	50	100
29.79	28.84	27.89	25.99 4C

* Pricing subject to change. Please confirm with sales rep.



IMPORTANT NOTE: The pricing reflected in this brochure is intended as a REFERENCE TOOL ONLY. Please refer to sales rep to confirm pricing, decoration methods, product info and PROP 65 info. | SET-UP: TruColor/Laser Engraving/Tru 0: \$60.00(G)/location. Pad Print/Silkscreen: \$60.00(G) per color/location. RUN CHARGES: TruColor: \$1.00(G) per piece/location for (full color) std. imprint area. Each add'l square inch beyond std. imprint area \$0.24(G) per piece/location. Pad Print/Silkscreen: 1st std. color/location included. Each add'l color/location \$0.50(G)/piece. Laser Engraving: 1st location included. Each add'l location \$1.20(G)/piece. Tru 0: \$3.00(G) per piece/location (Half Wrap); \$5.00(G) per piece/location (Full Wrap). Personalization: (TruColor & Laser Engraving only): Free first line per piece; \$1.00(G) per add'l line.



SL178PR



20oz Urban Peak® Pinnacle Flip Straw Tumbler

Stainless Steel, dual-wall, Copper-lined, vacuum-insulated deep draw liner. Powder-coated finish. 1-year limited warranty. Features a screw-on lid with metal handle and a built-in flip straw. Lead-free vacuum seal. XFactor 10X

24	48	96	244
25.19	24.39	23.59	21.99 4C

* Pricing subject to change. Please confirm with sales rep.



SL173PR



30oz Urban Peak® Apex Ridge Vacuum Travel Mug

Stainless Steel, dual-wall, Copper-lined, vacuum-insulated, deep draw liner. Push-on, flip top lid with snap locking closure and center straw hole (Tritan™ straw included). Powder-coated finish. 1-year limited warranty. Lead-free vacuum seal. XFactor 10X

12	25	50	100
27.49	26.61	25.74	23.99 4C

* Pricing subject to change. Please confirm with sales rep.



SL179PR



28oz Urban Peak® Pinnacle Flip Straw Tumbler

Stainless Steel, dual-wall, Copper-lined, vacuum-insulated liner. Powder-coated finish. 1-year limited warranty. Features a screw-on lid with metal handle and a built-in flip straw. Lead-free vacuum seal. XFactor 10X

24	48	96	244
26.39	25.54	24.69	22.99 4C

* Pricing subject to change. Please confirm with sales rep.



SL174PR

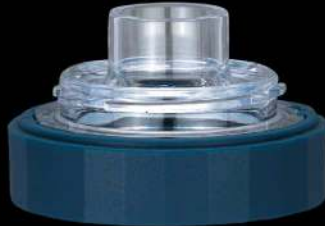


40oz Urban Peak® Apex Ridge Vacuum Travel Mug

Stainless Steel, dual-wall, Copper-lined, vacuum-insulated liner. Push-on, flip top lid with snap locking closure and center straw hole (Tritan™ straw included). Powder-coated finish. 1-year limited warranty. Lead-free vacuum seal. XFactor 12X

12	25	50	100
28.69	27.77	26.84	24.99 4C

* Pricing subject to change. Please confirm with sales rep.



SL180PR



Urban Peak® 40oz Dual Top Water Bottle

Patent pending. Dual-wall Stainless Steel construction with Copper-lined vacuum-insulated liner. Sweat-free, powder-coated finish. Features a screw-on plastic dual top and adjustable metal handle. Lead-free vacuum seal. 1-year limited warranty. XFactor 10X

12	25	50	100	
28.69	27.77	26.84	24.99	4C

* Pricing subject to change. Please confirm with sales rep.

IMPORTANT NOTE: The pricing reflected in this brochure is intended as a REFERENCE TOOL ONLY. Please refer to sales rep to confirm pricing, decoration methods, product info and PROP 65 info. | SET-UP: TruColor/Laser Engraving/Tru.0: \$60.00(G)/location. Pad Print/Silkscreen: \$60.00(G) per color/location. RUN CHARGES: TruColor: \$1.00(G) per piece/location for (full color) std. imprint area. Each add'l square inch beyond std. imprint area \$0.24(G) per piece/location. Pad Print/Silkscreen: 1st std. color/location included. Each add'l color/location \$0.50(G)/piece. Laser Engraving: 1st location included. Each add'l location \$1.20(G)/piece. Tru.0: \$3.00(G) per piece/location (Half Wrap); \$5.00(G) per piece/location (Full Wrap). Personalization: (TruColor & Laser Engraving only). Free first line per piece; \$1.00(G) per add'l line.



SL188CP

NEW

28oz Urban Peak® Dual Top Copper Water Bottle

Stainless Steel, dual-wall, Copper-lined, vacuum-insulated liner. Powder-coated finish with a Copper underlay. Features a leak-proof, screw-on plastic dual top for both wide opening and drinking spout. Lead-free vacuum seal. 1-year limited warranty.

24	48	96	244
25.19	24.39	23.59	21.99 4C

* Pricing subject to change. Please confirm with sales rep.



SL188BC

NEW

28oz Urban Peak® Dual Top Black Chrome Water Bottle

Stainless Steel, dual-wall, Copper-lined, vacuum-insulated liner. Powder-coated finish with a Black Chrome underlay. Features a leak-proof, screw-on plastic dual top for both wide opening and drinking spout. Lead-free vacuum seal. 1-year limited warranty.

24	48	96	244
25.19	24.39	23.59	21.99 4C

* Pricing subject to change. Please confirm with sales rep.



SL186PR

Urban Peak® 34oz Dual Top Water Bottle

Patented. Dual-wall Stainless Steel construction with Copper-lined vacuum-insulated liner. Sweat-free, powder-coated finish. Features a screw-on plastic dual top. Lead-free vacuum seal. 1-year limited warranty. XFactor 10X

12	25	50	100
25.19	24.39	23.59	21.99 4C

* Pricing subject to change. Please confirm with sales rep.



SL181PR

Urban Peak® 64oz Dual Top Water Bottle

Patent pending. Dual-wall Stainless Steel construction with Copper-lined vacuum-insulated liner. Sweat-free, powder-coated finish. Features a screw-on plastic dual top. Lead-free vacuum seal. 1-year limited warranty. XFactor 12X

6	12	36	72
44.69	43.27	41.84	38.99 4C

* Pricing subject to change. Please confirm with sales rep.



SL171PR

Urban Peak® 40oz Portage Flip Straw Water Bottle

Patented. Stainless Steel, dual-wall, Copper-lined, vacuum-insulated liner. Features a twist-off lid with handle and built-in flip straw (2 straws included). Powder-coated finish. 1-year limited warranty. Lead-free vacuum seal. XFactor 12X

12	25	50	100
27.49	26.61	25.74	23.99 4C

* Pricing subject to change. Please confirm with your sales rep

IMPORTANT NOTE: The pricing reflected in this brochure is intended as a REFERENCE TOOL ONLY. Please refer to sales rep to confirm pricing, decoration methods, product info and PROP 65 info. | SET-UP: TruColor/Laser Engraving/Tru.0: \$60.00(G)/location. Pad Print/Silkscreen: \$60.00(G) per color/location. RUN CHARGES: TruColor: \$1.00(G) per piece/location for (full color) std. imprint area. Each add'l square inch beyond std. imprint area \$0.24(G) per piece/location. Pad Print/Silkscreen: 1st std. color/location included. Each add'l color/location \$0.50(G)/piece. Laser Engraving: 1st location included. Each add'l location \$1.20(G)/piece. Tru.0: \$3.00(G) per piece/location (Half Wrap); \$5.00(G) per piece/location (Full Wrap). Personalization: (TruColor & Laser Engraving only); Free first line per piece; \$1.00(G) per add'l line.



SL169PR

Urban Peak® 20oz Portage Flip Straw Water Bottle

Patented. Stainless Steel, dual-wall, Copper-lined, vacuum-insulated liner. Features a twist-off lid with handle and built-in flip straw (2 straws included). Powder-coated finish. 1-year limited warranty. Lead-free vacuum seal. XFactor 10X

24	48	96	244
20.59	19.94	19.29	17.99 4C

* Pricing subject to change. Please confirm with your sales rep



SL170PR

Urban Peak® 25oz Portage Flip Straw Water Bottle

Patented. Stainless Steel, dual-wall, Copper-lined, vacuum-insulated liner. Features a twist-off lid with handle and built-in flip straw (2 straws included). Powder-coated finish. 1-year limited warranty. Lead-free vacuum seal. XFactor 10X

24	48	96	244
21.19	20.52	19.84	18.49 4C

* Pricing subject to change. Please confirm with your sales rep



NEW

SL192PR

20oz Urban Peak® Jasper Vacuum Mug

Dual-wall, Copper-lined vacuum-insulated deep draw liner. Powder-coated finish with Stainless Steel top and bottom rim accents. Spill-proof, push-on lid with Tritan™ snap-locking closure. Lead-free vacuum seal. 1-year limited warranty. XFactor 8X

24	48	96	244	
24.09	23.32	22.54	20.99	4C

* Pricing subject to change. Please confirm with your sales rep



IMPORTANT NOTE: The pricing reflected in this brochure is intended as a REFERENCE TOOL ONLY. Please refer to sales rep to confirm pricing, decoration methods, product info and PROP 65 info. | SET-UP: TruColor/Laser Engraving: \$60.00(G)/location. Pad Print/Silkscreen: \$60.00(G) per color/location. RUN CHARGES: TruColor: \$1.00(G) per piece/location for (full color) std. imprint area. Each add'l square inch beyond std. imprint area \$0.24(G) per piece/location. Pad Print/Silkscreen: 1st std. color/location included. Each add'l color/location \$0.50(G)/piece. Laser Engraving: 1st location included. Each add'l location \$1.20(G)/piece. Personalization: (TruColor & Laser Engraving only): Free first line per piece; \$1.00(G) per add'l line.



SL168PR



30oz Urban Peak® Harbor Trail Vacuum Camp Mug

Patented. Dual-wall, Copper-lined vacuum-insulated deep draw liner. Powder-coated finish with a Stainless Steel top rim. 1-year limited warranty. Leak-resistant, push-on lid with Tritan™ snap-locking closure. Lead-free vacuum seal. XFactor 10X

24	48	96	244
27.49	26.61	25.74	23.99 4C

* Pricing subject to change. Please confirm with your sales rep



SL162PR



16oz Urban Peak® Stony Trail Vacuum Mug

Patented. Dual-wall, Copper-lined vacuum-insulated deep draw liner. Powder-coated finish. 1-year limited warranty. Includes a smoke color spill-proof, push-on lid with Tritan™ snap-locking closure. Lead-free vacuum seal. XFactor 10X

24	48	96	244
22.89	22.16	21.44	19.99 4C

* Pricing subject to change. Please confirm with sales rep.



SL163PR



20oz Urban Peak® Harbor Trail Vacuum Camp Mug

Patented. Dual-wall, Copper-lined vacuum-insulated deep draw liner. Powder-coated finish with a Stainless Steel top rim. 1-year limited warranty. Spill-proof, push-on lid with Tritan™ snap-locking closure. Lead-free vacuum seal. XFactor 8X

24	48	96	244
25.19	24.39	23.59	21.99 4C

* Pricing subject to change. Please confirm with sales rep.



SL191PR



16oz Urban Peak® Jasper Vacuum Mug

Dual-wall, Copper-lined vacuum-insulated deep draw liner. Powder-coated finish with Stainless Steel top and bottom rim accents. Spill-proof, push-on lid with Tritan™ snap-locking closure. Lead-free vacuum seal. 1-year limited warranty. XFactor 10X

24	48	96	244
22.89	22.16	21.44	19.99 4C

* Pricing subject to change. Please confirm with your sales rep



SL258PR

14oz Urban Peak® Trek Vacuum Camp Mug

Dual-wall, Copper-lined vacuum-insulated deep draw liner. 18-8 Stainless Steel. Powder-coated finish. 1-year limited warranty. Clear push-on, sip-through lid. Lead-free vacuum seal. XFactor 7X

24	48	96	244	
22.89	22.16	21.44	19.99	40

* Pricing subject to change. Please confirm with sales rep.



IMPORTANT NOTE: The pricing reflected in this brochure is intended as a REFERENCE TOOL ONLY. Please refer to sales rep to confirm pricing, decoration methods, product info and PROP 65 info. | SET-UP: TruColor/Laser Engraving: \$60.00(G)/location. Pad Print/Silkscreen: \$60.00(G) per color/location. RUN CHARGES: TruColor: \$1.00(G) per piece/location for (full color) std. imprint area. Each add'l square inch beyond std. imprint area \$0.24(G) per piece/location. Pad Print/Silkscreen: 1st std. color/location included. Each add'l color/location \$0.50(G)/piece. Laser Engraving: 1st location included. Each add'l location \$1.20(G)/piece. Personalization: (TruColor & Laser Engraving only): Free first line per piece; \$1.00(G) per add'l line.



SL261PR



18oz Urban Peak® Elevate Vacuum Camp Mug

Dual-wall, Copper-lined vacuum-insulated deep draw liner. 18-8 Stainless Steel. Durable powder-coated finish. 1-year limited warranty. Features a clear push-on, sip-through lid. Lead-free vacuum seal. XFactor **8X**

24	48	96	244
22.89	22.16	21.44	19.99 4C

* Pricing subject to change. Please confirm with sales rep.



SL259PR



14oz Urban Peak® Summit Vacuum Camp Mug

Dual-wall, Copper-lined vacuum-insulated deep draw liner. 18-8 Stainless Steel. Powder-coated finish. 1-year limited warranty. Clear push-on, sip-through lid. Lead-free vacuum seal. XFactor **7X**

24	48	96	244
22.89	22.16	21.44	19.99 4C

* Pricing subject to change. Please confirm with sales rep.



SL167PR



15oz Urban Peak® Citrine Vacuum Mug

Stainless Steel, dual-wall, Copper-lined, vacuum-insulated, deep draw liner. Features a clear push-on, sip-through lid. Powder-coated finish. 1-year limited warranty. Lead-free in all accessible components. XFactor **7X**

24	48	96	244
22.89	22.16	21.44	19.99 4C

* Pricing subject to change. Please confirm with your sales rep



SL167PM

15oz Urban Peak® Alloy Vacuum Mug

Stainless Steel, dual-wall, Copper-lined, vacuum-insulated, deep draw liner. Features a clear push-on, sip-through lid. Powder-coated finish. 1-year limited warranty. Lead-free in all accessible components. XFactor **7X**

24	48	96	244
21.79	21.09	20.39	18.99 4C

* Pricing subject to change. Please confirm with sales rep.

SL185PR

EarthTrendz™ 14oz Recycled Stainless Steel Tumbler

Constructed with eco-friendly recycled Stainless Steel. Dual-wall, Copper-lined vacuum-insulated liner. Durable powder-coated finish. Features a screw on recycled PP lid with snap closure. Lead-free vacuum seal. XFactor 9X

24	48	96	244
18.29	17.71	17.14	15.99 4C

* Pricing subject to change. Please confirm with sales rep.



EARTHTRENDZ™



IMPORTANT NOTE: The pricing reflected in this brochure is intended as a REFERENCE TOOL ONLY. Please refer to sales rep to confirm pricing, decoration methods, product info and PROP 65 info. | SET-UP: TruColor/Laser Engraving/Tru.0: \$60.00(G)/location. Pad Print/Silkscreen: \$60.00(G) per color/location. RUN CHARGES: TruColor: \$1.00(G) per piece/location for (full color) std. imprint area. Each add'l square inch beyond std. imprint area \$0.24(G) per piece/location. Pad Print/Silkscreen: 1st std. color/location included. Each add'l color/location \$0.50(G)/piece. Laser Engraving: 1st location included. Each add'l location \$1.20(G)/piece. Tru.0: \$3.00(G) per piece/location (Half Wrap); \$5.00(G) per piece/location (Full Wrap). Personalization: (TruColor & Laser Engraving only): Free first line per piece; \$1.00(G) per add'l line.



SL175PR



12oz Urban Peak® Bondi Vacuum Tumbler

Stainless Steel, dual-wall, Copper-lined, vacuum-insulated, deep draw liner. Powder-coated finish with Silicone grip. 1-year limited warranty. Features a thumb-slide, push-on lid (clear lid on white, smoke lid on black). Lead-free vacuum seal. XFactor **6X**

24	48	96	244
18.29	17.71	17.14	15.99 4C

* Pricing subject to change. Please confirm with your sales rep



SL256PR



Urban Peak® 17oz Staple Trail Vacuum Tumbler

Patented. Dual wall, Copper lined vacuum-insulated deep draw liner. 18-8 Stainless Steel. Spill-proof lid with Tritan snap-locking closure. Powder-coated finish. 1-year limited warranty. Lead-free vacuum seal. XFactor **8X**

24	48	96	244
21.79	21.09	20.39	18.99 4C

* Pricing subject to change. Please confirm with sales rep.



SL263PR



15oz Urban Peak® Stout Trail Vacuum Tumbler

Dual-wall, Copper-lined vacuum-insulated deep draw liner. 18-8 Stainless Steel. Durable powder-coated finish. 1-year limited warranty. Features a clear push-on, sip-through lid. Lead-free vacuum seal. XFactor **6X**

24	48	96	244
17.19	16.64	16.09	14.99 4C

* Pricing subject to change. Please confirm with sales rep.



SL166PR



18oz Urban Peak® Stout Trail Vacuum Mug

Stainless Steel, dual-wall, Copper-lined, vacuum-insulated, deep draw liner. Features a clear push-on, sip-through lid. Powder-coated finish. 1-year limited warranty. Lead-free vacuum seal. XFactor **8X**

24	48	96	244
22.89	22.16	21.44	19.99 4C

* Pricing subject to change. Please confirm with your sales rep

FrostBuddy.



FB01 - FB58

Frost Buddy® Universal Buddy 2.0

The world's first universal can cooler! Designed to insulate nearly all 12oz and 16oz cans and bottles. Double wall, vacuum-insulated Stainless Steel. Keeps temperatures cold for 12+ hours. Includes Silicone lid and non-slip bottom. 1-year limited warranty. Patent Pending.

25	50	100	250
40.19	38.89	37.59	34.99 4C

* Pricing subject to change. Please confirm with sales rep.



IMPORTANT NOTE: The pricing reflected in this brochure is intended as a REFERENCE TOOL ONLY. Please refer to sales rep to confirm pricing, decoration methods, product info and PROP 65 info. | SET-UP: TruColor/Laser Engraving/Tru 0: \$60.00(G)/location. Pad Print/Silkscreen: \$60.00(G) per color/location. RUN CHARGES: TruColor: \$1.00(G) per piece/location for (full color) std. imprint area. Each add'l square inch beyond std. imprint area \$0.24(G) per piece/location. Pad Print/Silkscreen: 1st std. color/location included. Each add'l color/location \$0.50(G)/piece. Laser Engraving: 1st location included. Each add'l location \$1.20(G)/piece. Tru 0: \$3.00(G) per piece/location (Half Wrap); \$5.00(G) per piece/location (Full Wrap). Personalization: (TruColor & Laser Engraving only): Free first line per piece; \$1.00(G) per add'l line.



FrostBuddy.

FB701



Frost Buddy® To-Go Buddy

Designed to insulate varying-sized (Small, Medium, Large) retail to-go beverage cups. Stainless Steel, dual-wall, vacuum-insulated liner. Includes 2 lids: to-go beverage collar and a 100% leak-proof tumbler lid. 1-year limited warranty. Keeps contents cold for 24+ hours, hot for 6+ hours. Patent Pending.

12	25	50	100	
45.79	44.34	42.89	39.99	4C

* Pricing subject to change. Please confirm with sales rep.



FrostBuddy.

FB740



Frost Buddy® 40oz Thicc Buddy

Designed to transition from a 40oz mug to insulate varying-sized iced/hot retail (up to 30oz) to-go beverage cups. Stainless Steel construction. Handle integrates standard size lip balm holder and key ring. 1-year limited warranty. Keeps contents cold for 24+ hours, hot for 8+ hours. Patent Pending. (Carabiner not included)

6	12	36	72	
57.29	55.47	53.64	49.99	4C

* Pricing subject to change. Please confirm with sales rep.



FrostBuddy.

FB750



Frost Buddy® 50oz Thicc Buddy

Designed to transition from a 50oz mug to insulate varying-sized iced/hot retail (up to 44oz) to-go beverage cups. Stainless Steel construction. Handle integrates standard size lip balm holder and key ring. 1-year limited warranty. Keeps contents cold for 24+ hours, hot for 8+ hours. Patent Pending. (Carabiner not included)

6	12	36	72	
62.69	60.77	58.84	54.99	4C

* Pricing subject to change. Please confirm with sales rep.



FrostBuddy.

FB801

NEW

Frost Buddy® Universal Buddy XL

Designed to insulate nearly all bottles and cans (12oz slim cans, bottles, and cans; 16oz bottles and cans; 20oz bottles and 24oz cans.) Double wall, vacuum insulated Stainless Steel. Keeps temperatures cold for 12+ hours. Includes Silicone lid, 1 insert and 1 extension lid. 1-year limited warranty. Patent Pending.

25	50	100	250	
48.09	46.57	45.04	41.99	4C

* Pricing subject to change. Please confirm with sales rep.



SL165PR

20oz Urban Peak® Party Cup

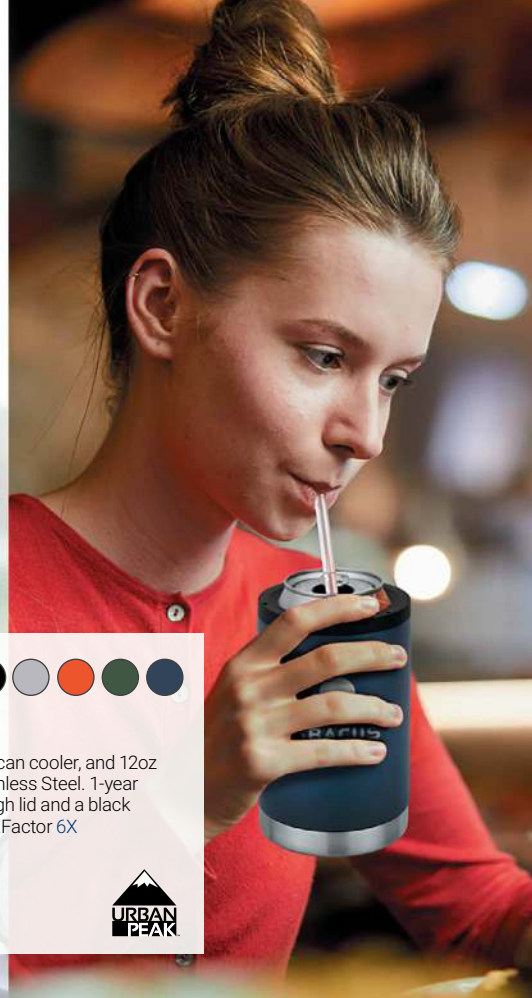
Patent pending. Dual-wall, Copper-lined vacuum-insulated deep draw liner. 18-8 Stainless Steel. Durable powder-coated finish. 1-year limited warranty. Features a clear push-on, sip-through lid. Lead-free vacuum seal. XFactor 7X

24	48	96	244
22.89	22.16	21.44	19.99 4C

* Pricing subject to change. Please confirm with sales rep.



IMPORTANT NOTE: The pricing reflected in this brochure is intended as a REFERENCE TOOL ONLY. Please refer to sales rep to confirm pricing, decoration methods, product info and PROP 65 info. | SET-UP: TruColor/Laser Engraving/Tru.0: \$60.00(G)/location. Pad Print/Silkscreen: \$60.00(G) per color/location. RUN CHARGES: TruColor: \$1.00(G) per piece/location for (full color) std. imprint area. Each add'l square inch beyond std. imprint area \$0.24(G) per piece/location. Pad Print/Silkscreen: 1st std. color/location included. Each add'l color/location \$0.50(G)/piece. Laser Engraving: 1st location included. Each add'l location \$1.20(G)/piece. Tru.0: \$3.00(G) per piece/location (Half Wrap); \$5.00(G) per piece/location (Full Wrap). Personalization: (TruColor & Laser Engraving only); Free first line per piece; \$1.00(G) per add'l line.



SL260PR



12oz Urban Peak® Bedrock Trail Vacuum Can Cooler

Transitions between poured drink insulated tumbler, 12oz can cooler, and 12oz beer bottle cooler. Dual-wall, vacuum-insulation. 18-8 Stainless Steel. 1-year limited warranty. Includes 2 lids (clear screw-on, sip-through lid and a black can/bottle ring). Lead-free in all accessible components. XFactor 6X

24	48	96	244
15.99	15.49	14.99	13.99 4C

* Pricing subject to change. Please confirm with sales rep.



SL238PR



12oz Urban Peak® 3-in-1 Trail Tumbler

Patented. Transitions between a 12oz insulated tumbler and a 12oz can/bottle cooler. Stainless Steel, Dual-wall, Copper-lined vacuum-insulated deep draw liner. Powder-coated finish. Includes 2 lids: spill-proof lid and a black can/bottle ring. 1-year limited warranty. Lead-free vacuum seal. XFactor 8X

24	48	96	244
18.29	17.71	17.14	15.99 4C

* Pricing subject to change. Please confirm with sales rep.



SL233PR



12oz Urban Peak® 3-in-1 Trail Insulator

Patented. Self-contained unit transitions between poured drink insulated tumbler, 12oz can cooler, and 12oz beer bottle cooler. Dual-wall, Copper-lined, vacuum-insulated deep draw liner. 1-year limited warranty. Includes 2 lids (thumb-slide, screw-on lid and a black can/bottle ring). Lead-free vacuum seal. XFactor 6X

24	48	96	244
18.29	17.71	17.14	15.99 4C

* Pricing subject to change. Please confirm with sales rep.



SL182PR

14oz Urban Peak® 4-in-1 Tumbler/Cooler

Self-contained unit transitions between poured drink insulated tumbler, 12oz can cooler, 12oz beer bottle cooler and 12oz slim can cooler. Copper-lined, dual-wall vacuum-insulated deep draw liner. 1-year limited warranty. Includes 2 lids (thumb-slide, screw-on lid and color-matching ring). Lead-free vacuum seal. XFactor 6X

24	48	96	244
18.89	18.29	17.69	16.49 4C

* Pricing subject to change. Please confirm with sales rep.



IMPORTANT NOTE: The pricing reflected in this brochure is intended as a REFERENCE TOOL ONLY. Please refer to sales rep to confirm pricing, decoration methods, product info and PROP 65 info. | SET-UP: TruColor/Laser Engraving/Tru.0: \$60.00(G)/location. Pad Print/Silkscreen: \$60.00(G) per color/location. RUN CHARGES: TruColor: \$1.00(G) per piece/location for (full color) std. imprint area. Each add'l square inch beyond std. imprint area \$0.24(G) per piece/location. Pad Print/Silkscreen: 1st std. color/location included. Each add'l color/location \$0.50(G)/piece. Laser Engraving: 1st location included. Each add'l location \$1.20(G)/piece. Tru.0: \$3.00(G) per piece/location (Half Wrap); \$5.00(G) per piece/location (Full Wrap). Personalization: (TruColor & Laser Engraving only); Free first line per piece; \$1.00(G) per add'l line.



SL262PR



12oz Urban Peak® 2-in-1 Slim Vacuum Can Tumbler

Patented. Transitions between a tumbler and a 12oz slim can cooler. Includes 2 lids: thumb-slide, screw-on lid and a black can/bottle ring. Dual-wall, Copper-lined vacuum-insulated deep draw liner. 18-8 Stainless Steel. Durable powder-coated finish. 1-year limited warranty. Lead-free vacuum seal. XFactor 7X

24	48	96	244
19.49	18.87	18.24	16.99 4C

* Pricing subject to change. Please confirm with sales rep.



SL238SS



12oz Urban Peak® 3-in-1 Tumbler

Transitions between 12oz insulated tumbler, 12oz can cooler, and 12 oz beer bottle cooler. Dual-wall, Copper-lined vacuum-insulated deep draw liner. 18-8 Stainless Steel. 1-year limited warranty. Includes 2 lids. Lead-free vacuum seal. XFactor 8X

24	48	96	244
17.19	16.64	16.09	14.99 4C

* Pricing subject to change. Please confirm with sales rep.



SL161PR



12oz Urban Peak® 3-in-1 Hassler Vacuum Mug

Patent pending. Transitions between 12oz insulated tumbler, 12oz can cooler and 12oz beer bottle cooler. Features 2 lids (thumb-slide, push-on and a black push-on can/bottle ring). Dual-wall, Copper-lined vacuum-insulated deep draw liner. Durable powder-coated finish. 1-year limited warranty. Lead-free vacuum seal. XFactor 7X

24	48	96	244
21.79	21.09	20.39	18.99 4C

* Pricing subject to change. Please confirm with sales rep.



SL234PR

20oz Urban Peak® Trail Vacuum Tumbler

Patented. Dual-wall, Copper-lined vacuum-insulated deep draw liner. Stainless Steel. Powder-coated finish. 1-year limited warranty. Spill-proof lid with Tritan™ snap-locking closure. Lead-free vacuum seal. XFactor 8X

24	48	96	244
19.49	18.87	18.24	16.99 4C

* Pricing subject to change. Please confirm with sales rep.



IMPORTANT NOTE: The pricing reflected in this brochure is intended as a REFERENCE TOOL ONLY. Please refer to sales rep to confirm pricing, decoration methods, product info and PROP 65 info. | SET-UP: TruColor/Laser Engraving/Tru 0: \$60.00(G)/location. Pad Print/Silkscreen: \$60.00(G) per color/location. RUN CHARGES: TruColor: \$1.00(G) per piece/location for (full color) std. imprint area. Each add'l square inch beyond std. imprint area \$0.24(G) per piece/location. Pad Print/Silkscreen: 1st std. color/location included. Each add'l color/location \$0.50(G)/piece. Laser Engraving: 1st location included. Each add'l location \$1.20(G)/piece. Tru 0: \$3.00(G) per piece/location (Half Wrap); \$5.00(G) per piece/location (Full Wrap). Personalization: (TruColor & Laser Engraving only): Free first line per piece; \$1.00(G) per add'l line.



SL189PR

NEW

16oz Urban Peak® Barton Vacuum Tumbler

Dual-wall, Copper-lined vacuum-insulated deep draw liner. Powder-coated finish with Stainless Steel top and bottom rim accents. Spill-proof, screw-on lid with Tritan™ snap-locking closure. Lead-free vacuum seal. 1-year limited warranty. XFactor 10X

24	48	96	244
18.29	17.71	17.14	15.99 4C

* Pricing subject to change. Please confirm with sales rep.



SL190PR

NEW

20oz Urban Peak® Barton Vacuum Tumbler

Dual-wall, Copper-lined vacuum-insulated deep draw liner. Powder-coated finish with Stainless Steel top and bottom rim accents. Spill-proof, screw-on lid with Tritan™ snap-locking closure. Lead-free vacuum seal. 1-year limited warranty. XFactor 8X

24	48	96	244
20.59	19.94	19.29	17.99 4C

* Pricing subject to change. Please confirm with sales rep.



SL235PR

30oz Urban Peak® Trail Vacuum Tumbler

Patented. Dual-wall, Copper-lined vacuum-insulated deep draw liner. Stainless Steel. Powder-coated finish. 1-year limited warranty. Spill-proof lid with Tritan™ snap-locking closure. Lead-free vacuum seal. XFactor 10X

24	48	96	244
22.89	22.16	21.44	19.99 4C

* Pricing subject to change. Please confirm with sales rep.



SL243PR

Urban Peak® 30oz Altair Vacuum Tumbler

Patented. Dual-wall, Copper-lined vacuum-insulated deep draw liner. 18-8 Stainless Steel. Powder-coated finish (colors). 1-year limited warranty. Spill-proof lid with Tritan™ snap-locking closure. Lead-free in all accessible components. XFactor 12X

24	48	96	244
22.89	22.16	21.44	19.99 4C

* Pricing subject to change. Please confirm with sales rep.

SL351PR

Urban Peak® Canyon Trail 20oz Vacuum Tumbler

Patented. Dual-wall, vacuum-insulated liner. 18-8 Stainless Steel. Spill-proof lid with Tritan™ snap-locking closure. Powder-coated finish. 1-year limited warranty. Lead-free vacuum seal. XFactor 8X

24	48	96	244
20.59	19.94	19.29	17.99 4C

* Pricing subject to change. Please confirm with sales rep.



IMPORTANT NOTE: The pricing reflected in this brochure is intended as a REFERENCE TOOL ONLY. Please refer to sales rep to confirm pricing, decoration methods, product info and PROP 65 info. | SET-UP: TruColor/Laser Engraving/Tru.0: \$60.00(G)/location. Pad Print/Silkscreen: \$60.00(G) per color/location. RUN CHARGES: TruColor: \$1.00(G) per piece/location for (full color) std. imprint area. Each add'l square inch beyond std. imprint area \$0.24(G) per piece/location. Pad Print/Silkscreen: 1st std. color/location included. Each add'l color/location \$0.50(G)/piece. Laser Engraving: 1st location included. Each add'l location \$1.20(G)/piece. Tru.0: \$3.00(G) per piece/location (Half Wrap); \$5.00(G) per piece/location (Full Wrap). Personalization: (TruColor & Laser Engraving only): Free first line per piece; \$1.00(G) per add'l line.



SL242PR

Urban Peak® 20oz Altair Vacuum Tumbler

Patented. Dual-wall, Copper-lined vacuum-insulated deep draw liner. 18-8 Stainless Steel. Powder-coated finish (colors). 1-year limited warranty. Spill-proof lid with Tritan™ snap-locking closure. Lead-free in all accessible components. XFactor **8X**

24	48	96	244
20.59	19.94	19.29	17.99

* Pricing subject to change. Please confirm with sales rep.



SL350PR

Urban Peak® Canyon Trail 16oz Vacuum Tumbler




Patented. Dual-wall, vacuum-insulated liner. 18-8 Stainless Steel. Spill-proof lid with Tritan™ snap-locking closure. Powder-coated finish. 1-year limited warranty. Lead-free vacuum seal. XFactor **7X**

24	48	96	244
18.29	17.71	17.14	15.99

* Pricing subject to change. Please confirm with sales rep.



You might also like

SL232PR	SL212PR	SL234SS	SL254PR	SL235SS
				
Urban Peak® 16oz Silo Trail Vacuum Tumbler as low as \$15.99 (C)	16oz Urban Peak® Caturra Trail Vacuum Tumbler as low as \$16.99 (C)	20oz Urban Peak® Vacuum Tumbler as low as \$15.99 (C)	Urban Peak® 16oz Camber Trail Vacuum Tumbler as low as \$17.99 (C)	30oz Urban Peak® Vacuum Tumbler as low as \$18.99 (C)



SL183TR

Urban Peak® 24oz Dual Top Tritan™ Water Bottle

Patent Pending. Single-wall Tritan™ plastic construction is lightweight, shatter, stain, and odor resistant. Features a leak-proof, screw-on plastic dual top for both wide opening and drinking spout. BPA Free. Hand wash only. 1-year limited warranty.

24	48	96	244
13.69	13.27	12.84	11.99 4C

* Pricing subject to change. Please confirm with sales rep.



SL184TR

Urban Peak® 32oz Dual Top Tritan™ Water Bottle

Patent Pending. Single-wall Tritan™ plastic construction is lightweight, shatter, stain, and odor resistant. Features a leak-proof, screw-on plastic dual top for both wide opening and drinking spout. BPA Free. Hand wash only. 1-year limited warranty.

24	48	96	244
14.81	14.36	13.90	12.99 4C

* Pricing subject to change. Please confirm with sales rep.



IMPORTANT NOTE: The pricing reflected in this brochure is intended as a REFERENCE TOOL ONLY. Please refer to sales rep to confirm pricing, decoration methods, product info and PROP 65 info. | SET-UP: TruColor/Laser Engraving/Tru.0: \$60.00(G)/location. Pad Print/Silkscreen: \$60.00(G) per color/location. RUN CHARGES: TruColor: \$1.00(G) per piece/location for (full color) std. imprint area. Each add'l square inch beyond std. imprint area \$0.24(G) per piece/location. Pad Print/Silkscreen: 1st std. color/location included. Each add'l color/location \$0.50(G)/piece. Laser Engraving: 1st location included. Each add'l location \$1.20(G)/piece. Tru.0: \$3.00(G) per piece/location (Half Wrap); \$5.00(G) per piece/location (Full Wrap). Personalization: (TruColor & Laser Engraving only). Free first line per piece; \$1.00(G) per add'l line.



SL164PM



16oz Urban Peak® Keystone Metallic Vacuum Tumbler

Patent pending. Dual-wall, Copper-lined vacuum-insulated deep draw liner. 18-8 Stainless Steel. Powder-coated finish with metallic color top and bottom rims. 1-year limited warranty. Spill-proof lid with Tritan™ snap-locking closure. Lead-free in all accessible components. XFactor 10X

24	48	96	244
21.79	21.09	20.39	18.99 4C

* Pricing subject to change. Please confirm with sales rep.



SL164PR

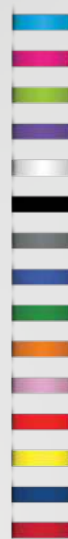


16oz Urban Peak® Keystone Trail Vacuum Tumbler

Patent pending. Dual-wall, Copper-lined vacuum-insulated deep draw liner. 18-8 Stainless Steel. Powder-coated finish with Stainless Steel top and bottom rims. 1-year limited warranty. Spill-proof lid with Tritan™ snap-locking closure. Lead-free in all accessible components. XFactor 10X

24	48	96	244
20.59	19.94	19.29	17.99 4C

* Pricing subject to change. Please confirm with sales rep.



Available Band Colors



SV95PR



14oz Persona® Wave Trail Vacuum Tumbler

Patented. Dual-wall, Copper-lined vacuum-insulated deep draw liner. Includes a leak-proof screw-on lid. Powder-coated finish. Lead-free vacuum seal. XFactor 9X

24	48	96	244
18.29	17.71	17.14	15.99 4C

* Pricing subject to change. Please confirm with sales rep.

BLENDi



BP01

NEW



BLENDi™ Pro+ Portable Blender 17oz

Cordless, portable and powerful rechargeable blender. 120W power, 6 Stainless Steel blades, BPA free cylinder and includes a travel bottle conversion bottom (to a 17.5oz capacity), blade cover, charging cord, and a carrying strap. Not dishwasher safe.

6	12	36	72
76.39	74.04	71.69	66.99 4C

* Pricing subject to change. Please confirm with sales rep.



BP02

NEW



BLENDi™ X Portable Blender 24oz

Cordless, portable and powerful rechargeable blender. 150W power, 6 Stainless Steel blades, BPA free cylinder and includes a travel bottle conversion bottom (to a 24oz capacity), blade cover, charging cord, and a carrying strap. Not dishwasher safe.

6	12	36	72
98.39	95.54	92.69	86.99 4C

* Pricing subject to change. Please confirm with sales rep.



BP03

NEW



BLENDi™ Original Portable Blender 17oz

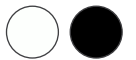
Revitalized and upgraded version of the BLENDi Original! Cordless, portable and powerful rechargeable blender. 70W power, 6 Stainless Steel blades, BPA free cylinder and includes a charging cord and a carrying strap. Not dishwasher safe.

6	12	36	72
42.39	41.04	39.69	36.99 4C

* Pricing subject to change. Please confirm with sales rep.



IMPORTANT NOTE: The pricing reflected in this brochure is intended as a REFERENCE TOOL ONLY. Please refer to sales rep to confirm pricing, decoration methods, product info and PROP 65 info. | SET-UP: TruColor/Laser Engraving/Tru 0: \$60.00(G)/location. Pad Print/Silkscreen: \$60.00(G) per color/location. RUN CHARGES: TruColor: \$1.00(G) per piece/location for (full color) std. imprint area. Each add'l square inch beyond std. imprint area \$0.24(G) per piece/location. Pad Print/Silkscreen: 1st std. color/location included. Each add'l color/location \$0.50(G)/piece. Laser Engraving: 1st location included. Each add'l location \$1.20(G)/piece. Tru 0: \$3.00(G) per piece/location (Half Wrap); \$5.00(G) per piece/location (Full Wrap). Personalization: (TruColor & Laser Engraving only): Free first line per piece; \$1.00(G) per add'l line.



EARTHTRENZ™

SV101PR

EarthTrendz™ 17oz MOD Trail Vacuum Water Bottle

Constructed with eco-friendly recycled Stainless Steel. Dual-wall, Copper-lined vacuum-insulated liner. Durable powder-coated finish. Features a Stainless Steel leak-proof, twist off cap. Lead-free in all accessible components. XFactor 10X

24	48	96	244
17.19	16.64	16.09	14.99 4C

* Pricing subject to change. Please confirm with sales rep.



SL265PR

Urban Peak® 17oz Flux Trail Water Bottle

Dual-wall, Copper-lined vacuum-insulated liner. 18-8 Stainless Steel. Durable powder-coated finish. Features a Stainless Steel leak-proof, twist off cap. Lead-free in all accessible components. 1-year limited warranty. XFactor 12X

24	48	96	244
17.19	16.64	16.09	14.99 4C

* Pricing subject to change. Please confirm with sales rep.

You might also like

SL257PR



13.5oz Pace Trail Vacuum Water Bottle
as low as \$13.99 (C)

SL244SS



Urban Peak® 20oz Water Bottle
as low as \$17.99 (C)

SL266PR



Urban Peak® 28oz Flux Trail Water Bottle
as low as \$16.99 (C)

SL248PR



Urban Peak® Blue Ridge Trail 20oz Water Bottle
as low as \$19.99 (C)

SL246PR



Urban Peak® 64oz Trail Growler
as low as \$33.99 (C)



UPK56

Urban Peak® SL235PR / EL161 Gift Set

Urban Peak® Gift Set includes the 30oz Trail Tumbler (SL235PR) and the 360 degree Bluetooth® Speaker (EL161) packaged inside an eco-conscious gift box. Drinkware is Patented and features 1-year limited warranty. Speaker is indoor/outdoor, waterproof (IPX7) 10 watt Bluetooth® speaker.

6	12	36	72
93.79	91.09	88.39	82.99 4C

* Pricing subject to change. Please confirm with sales rep.



IMPORTANT NOTE: The pricing reflected in this brochure is intended as a REFERENCE TOOL ONLY. Please refer to sales rep to confirm pricing, decoration methods, product info and PROP 65 info. | GIFT SETS: Gift Sets shown include the cost of decoration on a single location on each drinkware piece/cooler for a single TruColor/Laser Engraving Set-up of \$60.00(G) with no additional run charges. EL161 shown in UPK56 includes the cost of single location TruColor decoration. All drinkware pieces must have the same decoration method or are subject to add'l set-ups. Inquire for add'l locations. Personalization: (TruColor & Laser Engraving only). Free first line per piece; \$1.00(G) per add'l line.



UPK52

cooler color options

Urban Peak® CB157 / SL174PR Gift Set

Urban Peak Gift Set includes the 40oz Apex Ridge Vacuum Travel Mug (SL174PR) packaged inside the Waterproof 24 Can Hinge Cooler (CB157). 1-year limited warranty. Decoration included on all pieces.

12	25	50	100
79.19	76.89	74.59	69.99 4C

* Pricing subject to change. Please confirm with sales rep.

FrostBuddy.



UPK32

cooler color options

Urban Peak® CB161 / Frost Buddy® Black Gift Set

Gift set features the Frost Buddy® Universal Buddy 2.0 – Black (FB06), packaged inside the Urban Peak® Waterproof 12 Can Hinge Cooler (CB161). 1-year limited warranty. Decoration included on all pieces.

6	12	36	72
82.59	80.19	77.79	72.99 4C

* Pricing subject to change. Please confirm with sales rep.



UPK22

cooler color options

Urban Peak® CB161 / SL234PR Gift Set

Urban Peak® Gift Set includes the 20oz Trail Tumbler (SL234PR) packaged inside the Waterproof 12 Can Hinge Cooler (CB161). 1-year limited warranty. Drinkware Patented. Decoration included on all pieces.

12	25	50	100
57.29	55.47	53.64	49.99 4C

* Pricing subject to change. Please confirm with sales rep.



UPK18

cooler color options

Urban Peak® CB161 Gift Set

Urban Peak® Gift Set includes the 20oz (SL234PR) and 3-in-1 Tumbler (SL238PR) packaged inside the Waterproof 12 Can Hinge Cooler (CB161). 1-year limited warranty. Drinkware Patented. Decoration included on all pieces.

12	25	50	100
74.09	71.81	69.54	64.99 4C

* Pricing subject to change. Please confirm with sales rep.



CB188

Urban Peak® Waterproof Cryo 26 Can Backpack/Cooler

Waterproof 26 can backpack cooler featuring 100% recycled Polyester and extra thick foam insulation. Features include a roll-down adjustable closure top, leak-resistant heat-sealed liner, waterproof taped seams, and adjustable padded shoulder straps. 1-year limited warranty.

4	12	36	72
76.99	74.74	72.49	67.99 4C

* Pricing subject to change. Please confirm with sales rep.



IMPORTANT NOTE: The pricing reflected in this brochure is intended as a REFERENCE TOOL ONLY. Please refer to sales rep to confirm pricing, decoration methods, product info and PROP 65 info. | SET-UP: TruColor: \$60.00(G)/location. RUN CHARGES: TruColor: 1 location (full color) std. imprint area included. Each add'l location: \$0.50(G)/piece. Personalization: (TruColor only): Free first line per piece; \$1.00(G) per add'l line.



CB175

Urban Peak® Waterproof Ashforth 38 Can Tote/Cooler

Features rolled/folded closed and secured with 2 adjustable buckle straps. Constructed from waterproof Tarpaulin with a heat-sealed, leak-resistant liner. Includes an adjustable, padded shoulder strap, padded handles with hook and loop closure, and an attached Stainless Steel bottle opener. 1-year limited warranty.

6	12	36	72	
54.99	53.24	51.49	47.99	4C

* Pricing subject to change. Please confirm with sales rep.



CB171

Urban Peak® 35 Can Fold Top Backpack Cooler

Constructed from 55C PVC Mesh Tarpaulin with 10mm foam insulation. Features include a zippered, fold-over double buckle closure, leak-resistant heat-sealed liner, Stainless Steel bottle opener, carabiner, and adjustable padded shoulder straps. 1-year limited warranty.

12	25	50	100	
57.29	55.47	53.64	49.99	4C

* Pricing subject to change. Please confirm with sales rep.



CB172

Urban Peak® 24 Can Roll Top Backpack Cooler

Constructed from 55C PVC Mesh Tarpaulin with 210D/PU insulation. Features include a zippered, roll-down adjustable closure, leak-resistant heat-sealed liner, mesh side pockets, and adjustable padded shoulder straps. 1-year limited warranty.

12	25	50	100	
37.89	36.66	35.44	32.99	4C

* Pricing subject to change. Please confirm with sales rep.



NEW

CB185

Urban Peak® Waterproof Mombo Backpack/Cooler

A waterproof dual 21L backpack/24 can cooler constructed from 0.55mm Tarpaulin with 8mm foam insulation. Includes removable and refillable ice pack, leak-resistant heat-sealed liner, side zippered pockets, Stainless Steel bottle opener, and adjustable padded shoulder straps. 1-year limited warranty.

6	12	36	72
59.49	57.62	55.74	51.99 4C

*Pricing subject to change. Please confirm with sales rep.



IMPORTANT NOTE: The pricing reflected in this brochure is intended as a REFERENCE TOOL ONLY. Please refer to sales rep to confirm pricing, decoration methods, product info and PROP 65 info. | SET-UP: TruColor: \$60.00(G)/location. RUN CHARGES: TruColor: 1 location (full color) std. imprint area included. Each add'l location: \$0.50(G)/piece. Personalization: (TruColor only): Free first line per piece; \$1.00(G) per add'l line. Embroidery: Please ask sales rep for embroidery availability and pricing.



CB163

Urban Peak® Waterproof 24 Can Erol Cooler

Constructed from 500D Tarpaulin with heat-sealed, leak-resistant liner. Stainless Steel bottle opener. 1-year limited warranty.

12	25	50	100
40.19	38.89	37.59	34.99 4C

* Pricing subject to change. Please confirm with sales rep.



CB157

Urban Peak® Waterproof 24 Can Hinge Cooler

The Urban Peak Cooler Collection is known for its extra-thick insulation. Constructed from waterproof 55C PVC mesh Tarpaulin with a heat sealed, leak resistant liner. Hinge-style zippered top allows for quick accessibility. 1-year limited warranty.

12	25	50	100
45.89	44.42	42.94	39.99 4C

* Pricing subject to change. Please confirm with sales rep.



EARTHTRENDZ™



CB184

NEW

EarthTrendz™ rPET Zephyr 24 Can Cooler

24-can cooler constructed with eco-friendly Polyester made from recycled plastic bottles, PE foam, and a leak-resistant heat-resistant PEVA liner. Features front slash pocket, daisy chains with reflective accents, adjustable shoulder straps and attached Stainless Steel bottle opener.

12	25	50	100
32.09	31.07	30.04	27.99 4C

* Pricing subject to change. Please confirm with sales rep.

EARTHTRENDZ™



CB182

EarthTrendz™ rPET Whitewater 24 Can Cooler

24-can cooler constructed with eco-friendly Polyester made from recycled plastic bottles, PE foam, and a leak-resistant heat-sealed liner. Features front zipper and slash pockets, side mesh pocket and adjustable shoulder straps.

12	25	50	100
28.69	27.77	26.84	24.99 4C

* Pricing subject to change. Please confirm with sales rep.

CB161

Urban Peak® Waterproof 12 Can Hinge Cooler

The Urban Peak Cooler Collection is known for its extra-thick insulation. Constructed from waterproof 55C PVC Mesh Tarpaulin. Leak-resistant heat-sealed liner. Stainless Steel bottle opener. 1-year limited warranty.

12	25	50	100
32.09	31.07	30.04	27.99 40

* Pricing subject to change. Please confirm with sales rep.



IMPORTANT NOTE: The pricing reflected in this brochure is intended as a REFERENCE TOOL ONLY. Please refer to sales rep to confirm pricing, decoration methods, product info and PROP 65 info. | SET-UP: TruColor: \$60.00(G)/location. RUN CHARGES: TruColor: 1 location (full color) std. imprint area included. Each add'l location: \$0.50(G)/piece. Personalization: (TruColor only): Free first line per piece; \$1.00(G) per add'l line. Embroidery: Please ask sales rep for embroidery availability and pricing.



CB147

Metropolitan 12 Can Cooler Bag

Constructed from 300D and 210D Polyester. Features include a side mesh pocket, a webbed carry handle and an adjustable shoulder strap.

24	48	96	244
17.19	16.64	16.09	14.99 4C

* Pricing subject to change. Please confirm with sales rep.



CB173

Urban Peak® Waterproof 12 Can Hinge Asher Cooler

The Urban Peak Cooler Collection is known for its extra-thick insulation. Constructed from waterproof Tarpaulin with a heat-sealed, leak-resistant liner. Includes an adjustable shoulder strap, durable top and side handles, and an attached Stainless Steel bottle opener. 1-year limited warranty.

12	25	50	100
32.09	31.07	30.04	27.99 4C

* Pricing subject to change. Please confirm with sales rep.



CB41

Infinity 12 Can Sport Cooler

Features include foam insulation, heat-sealed liner, zippered side pocket and an adjustable/removable shoulder strap. Constructed from 420D Nylon/Dobby and 600D Polyester.

24	48	96	244
21.79	21.09	20.39	18.99 4C

* Pricing subject to change. Please confirm with sales rep.



CB174

Urban Peak® Waterproof 24 Can Hinge Asher Cooler

Constructed from waterproof Tarpaulin with a heat-sealed, leak-resistant liner. Hinge-style zippered top allows for quick accessibility. Includes an adjustable, padded shoulder strap, reinforced top and side handles, and an attached Stainless Steel bottle opener. 1-year limited warranty.

12	25	50	100
45.89	44.42	42.94	39.99 4C

* Pricing subject to change. Please confirm with sales rep.



NEW

CB186

Urban Peak® Waterproof Cryo 12 Can Cooler

Waterproof 12 can cooler featuring 100% recycled Polyester and extra thick foam insulation. Features a leak-resistant heat-sealed liner and seams, water resistant zippers, front zippered pocket, and an adjustable padded shoulder strap. 1-year limited warranty.

12	25	50	100	
40.19	38.89	37.59	34.99	4C

** Pricing subject to change. Please confirm with sales rep.*



NEW

CB187

Urban Peak® Waterproof Cryo 24 Can Cooler

Waterproof 24 can cooler featuring 100% recycled Polyester and extra thick foam insulation. Features a leak-resistant heat-sealed liner and seams, water resistant zippers, front zippered pocket, and an adjustable padded shoulder strap. 1-year limited warranty.

6	12	36	72	
57.29	55.47	53.64	49.99	4C

** Pricing subject to change. Please confirm with sales rep.*





CB176



Urban Peak® Waterproof Roxhill 12 Can Cooler

Constructed from waterproof Tarpaulin with a heat-sealed, leak-resistant liner. Includes an adjustable, padded shoulder strap, 2 pockets, and padded handles with hook and loop closure. 1-year limited warranty.

12	25	50	100	
32.09	31.07	30.04	27.99	4C

* Pricing subject to change. Please confirm with sales rep.



CB177

Urban Peak® Waterproof Ballard 12 Can Cooler

The Urban Peak Cooler Collection is known for its extra-thick insulation. Constructed from waterproof Tarpaulin with a heat-sealed, leak-resistant liner. Includes an adjustable shoulder strap, durable top and side handles, and an attached Stainless Steel bottle opener. 1-year limited warranty.

12	25	50	100	
34.39	33.29	32.19	29.99	4C

* Pricing subject to change. Please confirm with sales rep.



CB180



Urban Peak® Waterproof Ridgetop 24 Can Cooler

Constructed from waterproof Tarpaulin with a heat-sealed, leak-resistant liner. Features a hinge-style zippered top and a hook and loop quick-access top panel. Includes an adjustable padded shoulder strap, padded handles with hook and loop closure, and an attached Stainless Steel bottle opener. 1-year limited warranty.

6	12	36	72	
57.29	55.47	53.64	49.99	4C

* Pricing subject to change. Please confirm with sales rep.



CB179



Urban Peak® Waterproof Ridgetop 12 Can Cooler

The Urban Peak Cooler Collection is known for its extra-thick insulation. Constructed from waterproof Tarpaulin with a heat-sealed, leak-resistant liner. Hinge-style zippered top. Includes an adjustable shoulder strap, 3 outer pockets, and an attached Stainless Steel bottle opener. 1-year limited warranty.

12	25	50	100	
34.39	33.29	32.19	29.99	4C

* Pricing subject to change. Please confirm with sales rep.



Durable, collapsible can cooler is designed to transition from cube shaped to flat for economical shipping and storage.



CB168

Urban Peak® 12 Can Collapsible Cooler

This durable, collapsible 12 can cooler is designed to transition easily from a cube shape to a flat piece for economical shipping and storage. Features waterproof Tarpaulin exterior, thick 8mm foam insulation and a leak-resistant heat-sealed liner. 1-year limited warranty.

12	25	50	100
34.39	33.29	32.19	29.99 4C

* Pricing subject to change. Please confirm with sales rep.



CB169

Urban Peak® 20 Can Collapsible Cooler

This durable, collapsible 20 can cooler is designed to transition easily from a cube shape to a flat piece for economical shipping and storage. Features waterproof Tarpaulin exterior, thick 10mm foam insulation and a leak-resistant heat-sealed liner. 1-year limited warranty.

12	25	50	100
45.89	44.42	42.94	39.99 4C

* Pricing subject to change. Please confirm with sales rep.



CB170

Urban Peak® 30 Can Collapsible Cooler

This durable, collapsible 30 can cooler is designed to transition easily from a cube shape to a flat piece for economical shipping and storage. Features waterproof Tarpaulin exterior, thick 10mm foam insulation and a leak-resistant heat-sealed liner. 1-year limited warranty.

12	25	50	100
54.99	53.24	51.49	47.99 4C

* Pricing subject to change. Please confirm with sales rep.

IMPORTANT NOTE: The pricing reflected in this brochure is intended as a REFERENCE TOOL ONLY. Please refer to sales rep to confirm pricing, decoration methods, product info and PROP 65 info. | SET-UP: TruColor: \$60.00(G)/location. RUN CHARGES: TruColor: 1 location (full color) std. imprint area included. Each add'l location: \$0.50(G)/piece. Personalization: (TruColor only): Free first line per piece; \$1.00(G) per add'l line. Embroidery: Please ask sales rep for embroidery availability and pricing.



CB165

Urban Peak® Reserve 6 Can Cooler

The Urban Peak Cooler Collection is known for its extra-thick insulation. Constructed from waterproof 500D Tarpaulin. Features a leak-resistant, heat sealed liner and an adjustable shoulder strap. 1-year limited warranty.

18	36	72	144	
22.89	22.16	21.44	19.99	4C

* Pricing subject to change. Please confirm with sales rep.



CB166

Urban Peak® Reserve 12 Can Cooler

The Urban Peak Cooler Collection is known for its extra-thick insulation. Constructed from waterproof 500D Tarpaulin. Features a leak-resistant, heat sealed liner, Stainless Steel bottle opener, and an adjustable shoulder strap. 1-year limited warranty.

18	36	72	144	
28.69	27.77	26.84	24.99	4C

* Pricing subject to change. Please confirm with sales rep.



CB162

Urban Peak® Waterproof 12 Can Dash Cooler

Constructed from 500D Tarpaulin with a heat-sealed, leak-resistant liner. Stainless Steel bottle opener. 1-year limited warranty.

12	25	50	100	
28.69	27.77	26.84	24.99	4C

* Pricing subject to change. Please confirm with sales rep.



CB167

Urban Peak® Reserve 24 Can Cooler

The Urban Peak Cooler Collection is known for its extra-thick insulation. Constructed from waterproof 500D Tarpaulin. Features a leak-resistant, heat sealed liner, Stainless Steel bottle opener, handles with a hook and loop closure, and an adjustable, padded shoulder strap. 1-year limited warranty.

12	25	50	100	
41.29	39.97	38.64	35.99	4C

* Pricing subject to change. Please confirm with sales rep.



CB178

Urban Peak® Waterproof Ballard 30 Can Cooler

Constructed of waterproof Tarpaulin with a heat-sealed, leak-resistant liner. Includes wide opening for quick access, an adjustable, padded shoulder strap, padded handles with hook and loop closure, and an attached Stainless Steel bottle opener. 1-year limited warranty.

6	12	36	72	
50.49	48.87	47.24	43.99	4C

* Pricing subject to change. Please confirm with sales rep.



CB164

Urban Peak® Slate 36 Can Waterproof Cooler

The Urban Peak Cooler Collection is known for its extra-thick insulation. Durable waterproof, top-loading 36 can cooler bag. Includes an adjustable padded shoulder strap and hook and loop padded handles. 1-year limited warranty.

6	12	36	72	
74.09	71.81	69.54	64.99	4C

* Pricing subject to change. Please confirm with sales rep.



CB160

Parcel 24 Can Cooler Bag

Features a two-compartment design with top storage and a PEVA heat-seal lined bottom compartment, a front zipper pocket, 2 mesh side pockets and an adjustable shoulder strap. Constructed from 300D Polyester with 15C PEVA, 210D Polyester lining.

12	25	50	100	
37.89	36.66	35.44	32.99	4C

* Pricing subject to change. Please confirm with sales rep.



CB183

EarthTrendz™ rPET Zephyr 12 Can Cooler

NEW

12-can cooler constructed with eco-friendly Polyester made from recycled plastic bottles, PE foam, and a leak-resistant heat-sealed PEVA liner. Features front slash pocket, daisy chains with reflective accents, adjustable shoulder strap and attached Stainless Steel bottle opener.

12	25	50	100	
25.19	24.39	23.59	21.99	4C

* Pricing subject to change. Please confirm with sales rep.

IMPORTANT NOTE: The pricing reflected in this brochure is intended as a REFERENCE TOOL ONLY. Please refer to sales rep to confirm pricing, decoration methods, product info and PROP 65 info. | SET-UP: TruColor: \$60.00(G)/location. Silkscreen: \$60.00(G) color/location. RUN CHARGES: TruColor: 1 location (full color) std. imprint area included. Each add'l location: \$0.50(G)/piece. Silkscreen: 1st std. color/location included. Each add'l color/location \$0.50(G)/piece. Personalization: (TruColor only): Free first line per piece; \$1.00(G) per add'l line. Embroidery: Please ask sales rep for embroidery availability and pricing.



CB151

Urban Peak® Waterproof 24 Can Cooler

Rugged, waterproof 500D Tarpaulin exterior 24-can capacity Cooler. Leak-resistant heat-sealed liner with a main zippered compartment, front zippered pocket, hook and loop secured handles and an adjustable/detachable padded shoulder strap. Includes attached Stainless Steel bottle opener. 1-year limited warranty.

9	18	36	72
51.49	49.87	48.24	44.99 4C

* Pricing subject to change. Please confirm with sales rep.



CB181

Urban Peak® Waterproof Ridgetop 36 Can Cooler

Constructed from waterproof Tarpaulin with a heat-sealed, leak-resistant liner. Features a hinge-style zippered top and hook and loop quick-access top panel. Includes an adjustable padded shoulder strap, padded handles with hook and loop closure, and an attached Stainless Steel bottle opener. 1-year limited warranty.

6	12	36	72
60.69	58.77	56.84	52.99 4C

* Pricing subject to change. Please confirm with sales rep.

You might also like

CB137	CB120	CB154	CB158
Sitka 18 Can Cooler Bag as low as \$21.99 (C)	Rigid 24 Can Cooler Bag as low as \$31.99 (C)	Urban Peak® 24 Can Cooler as low as \$39.99 (C)	Urban Peak® Waterproof 48 Can Hinge Cooler as low as \$59.99 (C)



UPK48

Sports Waterproof BG349 Duffel Kit

Gift set features the Urban Peak® 28oz Flux Trail Water Bottle (SL266PR) packaged inside the Urban Peak® 46L Waterproof Backpack/Duffel Bag (BG349). 1-year limited warranty. Decoration included on all pieces.

6	12	36	72	
66.09	64.06	62.04	57.99	4C

* Pricing subject to change. Please confirm with sales rep.



IMPORTANT NOTE: The pricing reflected in this brochure is intended as a REFERENCE TOOL ONLY. Please refer to sales rep to confirm pricing, decoration methods, product info and PROP 65 info. | GIFT SETS: Gift Sets shown include the cost of decoration on a single location on each drinkware piece/bag/cooler/pens for a single TruColor/Laser Engraving Set-up of \$60.00(G) with no additional run charges. All pieces must have the same decoration method or are subject to add'l set-ups. Inquire for add'l locations. Personalization: (TruColor & Laser Engraving only): Free first line per piece; \$1.00(G) per add'l line.



UPK35

Urban Peak® BG368 Trail Gift Set

Urban Peak® Gift Set includes the 20oz Trail Tumbler (SL234PR) and 30oz Trail Tumbler (SL235PR) packaged inside the Padded Tote Bag (BG368). 1-year limited warranty. Drinkware Patented. Decoration included on all pieces.

6	12	36	72	
79.19	76.89	74.59	69.99	4C

* Pricing subject to change. Please confirm with sales rep.



UPK46

Urban Peak® Keystone Lunch Date Kit

Gift set features 2 pieces of the 16oz Urban Peak® Keystone Trail Vacuum Tumbler (SL164PR – Patent Pending) and an Urban Peak® Reserve 12 Can Cooler (CB166). Decoration included on all pieces.

6	12	36	72	
77.49	75.12	72.74	67.99	4C

* Pricing subject to change. Please confirm with sales rep.



UPK53

Urban Peak® CB157 / SL174PR Duo Gift Set

Urban Peak® Gift Set includes 2 of the 40oz Apex Ridge Vacuum Travel Mug (SL174PR) packaged inside the Waterproof 24 Can Hinge Cooler (CB157). 1-year limited warranty. Decoration included on all pieces.

12	25	50	100	
107.39	104.29	101.19	94.99	4C

* Pricing subject to change. Please confirm with sales rep.



UPK23

Urban Peak® CB161 / SL234PR / GBSG Gift Set

Gift set features the 20oz Urban Peak® Trail Vacuum Tumbler (SL234PR) and a dozen uni-ball® 207 Gel Pens (GBSG) packaged inside the Urban Peak® Waterproof 12 Can Hinge Cooler (CB161). 1-year limited warranty on Urban Peak® items. Drinkware Patented. Decoration included on all pieces.

6	12	36	72	
90.59	87.94	85.29	79.99	4C

* Pricing subject to change. Please confirm with sales rep.

BG379
EarthTrendz™ Waterproof 6L Window Dry Bag

Features an interior clear front slash pocket ideal for touch-screen devices. Taped waterproof seams and roll top/buckle closure. Constructed with eco-friendly recycled two-tone Polyester and PVC backing. Attached carabiner.

36	72	144	250
13.69	13.27	12.84	11.99 4C

* Pricing subject to change. Please confirm with sales rep.

BG380
EarthTrendz™ Waterproof 10L Window Dry Bag

Features an interior clear front slash pocket ideal for touch-screen devices. Taped waterproof seams and roll top/buckle closure. Constructed with eco-friendly recycled two-tone Polyester and PVC backing. Attached carabiner.

24	48	96	244
15.99	15.49	14.99	13.99 4C

* Pricing subject to change. Please confirm with sales rep.





BG344



Urban Peak® 4L Essentials Dry Bag

Taped waterproof seams and roll top closure to ensure a waterproof seal. Constructed from 190T Polyester with PVC backing. Carabiner clip for convenient transport.

48	96	192	384
9.09	8.81	8.54	7.99 4C

* Pricing subject to change. Please confirm with sales rep.



BG345



Urban Peak® 12L Dry Bag

Taped waterproof seams and roll top closure to ensure a waterproof seal. Constructed from 190T Polyester with PVC backing. Carabiner clip for convenient transport.

36	72	144	250
13.69	13.27	12.84	11.99 4C

* Pricing subject to change. Please confirm with sales rep.



BG347



Urban Peak® 31L Dry Bag Backpack

Taped waterproof seams and roll top closure to ensure a waterproof seal. Constructed from 210T Grid Cloth with PVC backing. The clear, water-resistant front zip pocket provides easy touch-screen accessibility for electronic devices (device shown not included).

18	36	72	144
30.99	29.99	28.99	26.99 4C

* Pricing subject to change. Please confirm with sales rep.



BG363

Urban Peak® 22L Dry Bag Backpack

Water resistant backpack featuring a roll down top with side compression straps with buckle closure, padded air mesh adjustable shoulder straps, top handle, and a front zippered pocket with large toggle. Constructed from 210D PU Polyester. IPX4 rated water resistant.

12	25	50	100
44.69	43.27	41.84	38.99 4C

* Pricing subject to change. Please confirm with sales rep.



BG388

Urban Peak® Waterproof 46L Quake Dry Bag/Duffel

Constructed from waterproof 100% recycled Polyester. Features a wide opening, roll-down main compartment with zip lock top, waterproof taped seams, adjustable padded shoulder strap, zippered front pocket, and padded main handles with hook and loop closure. 1-year limited warranty.

6	12	36	72	
60.69	58.77	56.84	52.99	4C

* Pricing subject to change. Please confirm with sales rep.



BG375

Urban Peak® 41L Waterproof Westlake Duffel

Constructed of waterproof Tarpaulin with water-resistant zippers. Main zipper extends down over the sides for generous main compartment access. Includes handles with padded closure, and 2 side mesh pockets. The adjustable handles extend into an over-the-shoulder strap. 1-year limited warranty.

12	25	50	100	
33.29	32.22	31.14	28.99	4C

* Pricing subject to change. Please confirm with sales rep.



BG353

Summit Backpack/Duffel Bag

Constructed out of two-tone Linen and 840D PVC. Features 2 adjustable, air mesh shoulder straps for use as a backpack and a 46L capacity.

12	25	50	100	
30.99	29.99	28.99	26.99	4C

* Pricing subject to change. Please confirm with sales rep.



BG314

Metropolitan 23" Duffel

Constructed from 300D two-toned Polyester and 1680 Polyester. Features a spacious main zippered compartment, front zippered pocket, zippered ventilated side shoe compartment and 2 front mesh beverage/accessory pockets. Adjustable, detachable shoulder strap and padded handles.

12	25	50	100	
33.29	32.22	31.14	28.99	4C

* Pricing subject to change. Please confirm with sales rep.

IMPORTANT NOTE: The pricing reflected in this brochure is intended as a REFERENCE TOOL ONLY. Please refer to sales rep to confirm pricing, decoration methods, product info and PROP 65 info. | SET-UP: TruColor: \$60.00(G)/location. Silkscreen: \$60.00(G) color/location. RUN CHARGES: TruColor: 1 location (full color) std. imprint area included. Each add'l location: \$0.50(G)/piece. Silkscreen: 1st std. color/location included. Each add'l color/location \$0.50(G)/piece. Personalization: (TruColor only): Free first line per piece; \$1.00(G) per add'l line. Embroidery: Please ask sales rep for embroidery availability and pricing.



BG385

NEW

Voyage Folding Duffel Bag

Constructed from PVC-free smooth matte Polyester. Expandable bottom compartment increases capacity from 17L to 24L. Features front zippered pockets, back luggage sleeve with zipper pocket, adjustable padded shoulder strap, and can be folded into its own carrying case (7"H x 3"D x 12"W).

12	25	50	100	
36.69	35.52	34.34	31.99	4C

* Pricing subject to change. Please confirm with sales rep.



EARTHTRENDZ™

BG378

EarthTrendz™ 44L rPET Whitewater Duffel

Constructed with eco-friendly Polyester made from recycled plastic bottles. Features spacious main compartment with front zipper pocket, side shoe compartment, a side zipper pocket, and one side handle. Adjustable shoulder strap.

12	25	50	100	
33.29	32.22	31.14	28.99	4C

* Pricing subject to change. Please confirm with sales rep.



URBAN PEAK

BG369

Urban Peak® 56L Slate Duffel/Backpack 2.0

Multi-purpose padded shoulder straps allow user to convert the bag from a duffel to a backpack. Constructed from matte 55C PVC Mesh Tarpaulin. Includes an optional cross-body duffel bag strap. Also features water resistant zippers, front and back daisy chains, and side handles. 1-year limited warranty.

12	25	50	100	
45.89	44.42	42.94	39.99	4C

* Pricing subject to change. Please confirm with sales rep.



BG365

Colton Washed Canvas Duffel

Constructed from 16 oz washed Canvas and Vegan Leather. Features a large main compartment with an interior zippered pocket and a PU Leather bottom. Includes 2 side compression straps and a removable shoulder strap.

12	25	50	100	
36.69	35.52	34.34	31.99	4C

* Pricing subject to change. Please confirm with sales rep.



BG381

NEW

Lockport Anti-Theft Backpack

Anti-theft features designed to deter pickpockets while in transit. Constructed of 300D water resistant Polyester. Includes 2 front zippered pockets, a RFID lined pocket, a padded holder (designed to hold a 15" laptop), bottom buckled attachments, and back luggage strap.

6	12	36	72
51.49	49.87	48.24	44.99 4C

** Pricing subject to change. Please confirm with sales rep.*

IMPORTANT NOTE: The pricing reflected in this brochure is intended as a REFERENCE TOOL ONLY. Please refer to sales rep to confirm pricing, decoration methods, product info and PROP 65 info. | **SET-UP:** TruColor: \$60.00(G)/location. Silkscreen: \$60.00(G) color/location. **RUN CHARGES:** TruColor: 1 location (full color) std. imprint area included. Each add'l location: \$0.50(G)/piece. Silkscreen: 1st std. color/location included. Each add'l color/location \$0.50(G)/piece. **Personalization:** (TruColor only): Free first line per piece; \$1.00(G) per add'l line. **Embroidery:** Please ask sales rep for embroidery availability and pricing.



BG382

NEW

Dalton Dry Pocket Anti-Theft Backpack

Anti-theft features designed to deter pickpockets. Constructed of 300D water repellent Polyester. Includes a front zippered, easy-to-clean liner compartment, an RFID lined pocket, a padded main pocket (designed to hold a 15" laptop), water resistant zippers, hidden back zippered pocket, and back luggage strap.

6	12	36	72
54.99	53.24	51.49	47.99 4C

* Pricing subject to change. Please confirm with sales rep.



BG103

Domain Computer Backpack

Constructed out of 1680D and 840D Polyester. Features a padded 15" laptop pocket, compression straps, a large organizer in the front pocket and cushioned shoulder straps.

12	25	50	100
43.59	42.19	40.79	37.99 4C

* Pricing subject to change. Please confirm with sales rep.



BG355

Midtown Anti-theft Laptop Backpack

Features a large RFID-protected pocket and hidden exterior back zippered pocket with security hook zipper. Constructed of 300D Polyester and water-resistant material and zippers. Interior features padded inside pockets (holds up to a 15" laptop), a Neoprene tablet pocket, organizer and 2 mesh pockets.

6	12	36	72
56.09	54.31	52.54	48.99 4C

* Pricing subject to change. Please confirm with sales rep.



BG356

Midway Anti-theft Laptop Backpack

Anti-theft features designed to deter pickpockets while in transit. Constructed of 1000D water repellent Polyester. Includes a built-in RFID protected pocket, interior slash pockets (designed to hold a 15" laptop), tablet pocket, and back luggage strap.

6	12	36	72
62.69	60.77	58.84	54.99 4C

* Pricing subject to change. Please confirm with sales rep.



BG387

NEW

Urban Peak® Waterproof 24L Quake Dry Bag/Backpack

Waterproof 24L dry bag featuring 100% recycled 600D Polyester. Features include a roll-down top with side compression straps and buckle closures, water resistant zippers, waterproof taped seams, front zippered pocket, and adjustable padded shoulder straps. 1-year limited warranty.

6	12	36	72
43.59	42.19	40.79	37.99 4C

* Pricing subject to change. Please confirm with sales rep.



BG377

NEW

EarthTrendz™ 26L rPET Whitewater Laptop Backpack

Constructed with eco-friendly Polyester made from recycled plastic bottles. Features slash laptop pocket (up to 15" laptop), two front zipper pockets, side mesh pocket, adjustable mesh comfort shoulder straps, and top handle.

12	25	50	100
27.49	26.61	25.74	23.99 4C

* Pricing subject to change. Please confirm with sales rep.



BG371

Urban Peak® Harmon Ridge Laptop Backpack

Constructed from waterproof Tarpaulin and water-resistant zippers. Features include a 15" laptop pocket, a tablet pocket, two internal water bottle side pockets, two adjustable/removable front compression/carry straps, a padded back panel, adjustable air mesh shoulder straps. 1-year limited warranty.

6	12	36	72
68.39	66.29	64.19	59.99 4C

* Pricing subject to change. Please confirm with sales rep.



BG372

Bainbridge Laptop Backpack

Constructed of 600D/PVC 7P, 600D/PVC Reversed 7P, Honeycomb ripstop/PVC 7P with 210D/PU backing. Features a padded slash laptop pocket and tablet pocket with 2 front zippered pockets, 2 side mesh pockets, padded back, adjustable padded air mesh shoulder straps, and a top handle.

12	25	50	100
29.79	28.84	27.89	25.99 4C

* Pricing subject to change. Please confirm with sales rep.

IMPORTANT NOTE: The pricing reflected in this brochure is intended as a REFERENCE TOOL ONLY. Please refer to sales rep to confirm pricing, decoration methods, product info and PROP 65 info. | SET-UP: TruColor: \$60.00(G)/location. Silkscreen: \$60.00(G) color/location. RUN CHARGES: TruColor: 1 location (full color) std. imprint area included. Each add'l location: \$0.50(G)/piece. Silkscreen: 1st std. color/location included. Each add'l color/location \$0.50(G)/piece. Personalization: (TruColor only): Free first line per piece; \$1.00(G) per add'l line. Embroidery: Please ask sales rep for embroidery availability and pricing.



BG359

Urban Peak® Water Resistant Computer Backpack

Constructed of 300D water-repellent Polyester with PU backing and 55C matte PVC Leather bottom. Padded-pocket main compartment (designed for 17" laptop), tablet pocket and organizer. Top zippered compartment features 2 Neoprene pockets and key clip.

9	18	36	72
56.09	54.31	52.54	48.99 4C

* Pricing subject to change. Please confirm with sales rep.



TRAVELON

TRV02

Travelon® Anti-Theft Classic Large Backpack

Multiple compartment and panels, can hold a laptop or device up to 15.6", and zippered mesh water bottle pocket. Features Travelon's 5-Point Anti-Theft securities: slash-resistant mesh, slash-resistant strap, RFID blocking organizer, locking compartments, and lock-down strap. Rear luggage handle strap and tethered key clip LED light. Patented.

3	12	36	72
134.49	130.87	127.24	119.99 4C

* Pricing subject to change. Please confirm with sales rep.

NEW



You might also like

BG333	BG351	BG373	BG352	BG354
Metropolitan Rucksack as low as \$20.99 (C)	Metropolitan Computer Backpack as low as \$26.99 (C)	Urban Peak® Travel Computer Backpack w/ Dry Pocket as low as \$49.99 (C)	Metropolitan Slope Computer Backpack as low as \$37.99 (C)	Red Hook Anti-theft Laptop Backpack as low as \$39.99 (C)



BG384

NEW

Jett 4L Crossbody Sling Bag

Simple sling bag can be worn as a crossbody or a shoulder pack. Constructed from PVC-free smooth matte Polyester and features a front zippered pocket, 2 inside slash pockets, and 2 easy switch exterior "D" rings. Strap is adjustable up to 40 inches.

24	48	96	244
15.99	15.49	14.99	13.99 4C

* Pricing subject to change. Please confirm with sales rep.



TRAVELON
TRV07

NEW ● ● ●

Travelon® Anti-Theft Greenlander Compact Sling

Sustainable 100% certified recycled rPET material and an adjustable lock-down strap up to 59". Features Travelon's 5-Point Anti-Theft securities: slash-resistant mesh, slash-resistant strap, RFID blocking organizer, locking compartments, and lock-down strap. Patented.

6	12	36	72
54.99	53.24	51.49	47.99 4C

* Pricing subject to change. Please confirm with sales rep.



TRAVELON
TRV04

NEW ● ●

Travelon® Anti-Theft Urban® Small Crossbody

Multiple zippered pockets, adjustable shoulder straps, and quick access rear slip pocket. Features Travelon's 5-Point Anti-Theft securities: slash-resistant mesh, slash-resistant strap, RFID blocking organizer, locking compartments, and lock-down strap. Tethered key clip LED light. Patented.

6	12	36	72
68.39	66.29	64.19	59.99 4C

* Pricing subject to change. Please confirm with sales rep.



TRAVELON
TRV01

NEW ● ● ●

Travelon® Anti-Theft Classic Sling Bag

Multiple zippered pockets, can hold a 10" tablet, and zippered mesh water bottle pocket. Features Travelon's 5-Point Anti-Theft securities: slash-resistant mesh, slash-resistant strap, RFID blocking organizer, locking compartments, and lock-down strap. Tethered key clip LED light. Patented.

6	12	36	72
90.59	87.94	85.29	79.99 4C

* Pricing subject to change. Please confirm with sales rep.

IMPORTANT NOTE: The pricing reflected in this brochure is intended as a REFERENCE TOOL ONLY. Please refer to sales rep to confirm pricing, decoration methods, product info and PROP 65 info. | SET-UP: TruColor: \$60.00(G)/location. RUN CHARGES: TruColor: 1 location (full color) std. imprint area included. Each add'l location: \$0.50(G)/piece. Personalization: (TruColor only): Free first line per piece; \$1.00(G) per add'l line.



TRV03

NEW ●●●●

Travelon® Anti-Theft Metro Waist Pack

Multiple zippered pockets and an adjustable waist strap up to 56". Features Travelon's 5-Point Anti-Theft securities: slash-resistant mesh, slash-resistant strap, RFID blocking organizer, locking compartments, and lock-down strap. Tethered key clip LED light. Patented.

6	12	36	72	
76.99	74.74	72.49	67.99	4C

* Pricing subject to change. Please confirm with sales rep.



BG370

Urban Peak® Crossbody Belt Bag / Fanny Pack

Sleek, water-resistant belt bag can be worn as a crossbody or a waist pack. Constructed from durable Tarpaulin and features reflective trim and side webbing for clip attachment. Belt is adjustable up to 53 inches. 1-year limited warranty.

24	48	96	244	
14.29	13.84	13.39	12.49	4C

* Pricing subject to change. Please confirm with sales rep.



TRV06

NEW ●●

Travelon® Anti-Theft Urban® Waist Pack

Multiple zippered pockets and an adjustable waist strap up to 48". Features Travelon's 5-Point Anti-Theft securities: slash-resistant mesh, slash-resistant strap, RFID blocking organizer, locking compartments, and lock-down strap. Tethered key clip LED light. Patented.

6	12	36	72	
54.99	53.24	51.49	47.99	4C

* Pricing subject to change. Please confirm with sales rep.



BG383

NEW ●●

Swift 2L Belt Bag

Simple belt bag can be worn as a crossbody or a waist pack. Constructed from PVC-free smooth matte Polyester and features inside key hook, one zippered and one slash pockets. Belt is adjustable up to 46 inches.

24	48	96	244	
11.99	11.62	11.24	10.49	4C

* Pricing subject to change. Please confirm with sales rep.

UB29

NEW

uni-ball® AIR Rollerball Pen White

Write smoothly at any angle with bold ink laydown. AIR's unique cushion-tip technology provides an effortless writing experience. Elegantly designed for elevated style. uni Super Ink™ technology protects against water, fading & fraud. Point size: 0.7mm. Ink: Black. Non-refillable.

200	500	1000	2500	
2.99	2.90	2.55	2.19	2ABC

* Pricing subject to change. Please confirm with sales rep.





uni
FBR

uni-ball® Fine Point Pen

The classic Roller is crafted with 80% post-consumer recycled electronics. It delivers the silky-smooth glide of a fountain pen without smudging. uni Super Ink™ technology protects against water, fading & fraud. Durable metal clip. Point size: 0.7mm. Ink: Black, Blue. Non-refillable.

250	500	1000	2500	
2.59	2.51	2.21	1.89	2ABC

* Pricing subject to change. Please confirm with sales rep.



uni
MBR

uni-ball® Micro Point Black Pen

The classic Roller is crafted with 80% post-consumer recycled electronics. It delivers the silky-smooth glide of a fountain pen without smudging. uni Super Ink™ technology protects against water, fading & fraud. Durable metal clip. Point size: 0.5mm. Ink: Black, Blue. Non-refillable.

250	500	1000	2500	
2.59	2.51	2.21	1.89	2ABC

* Pricing subject to change. Please confirm with sales rep.



UB27

uni-ball® 207 PLUS+ Gel Pen

The 207 Plus+ retractable gel pen delivers smooth, innovative Super Ink™ Plus+. Protects against water, fading, and fraud. Smooth rubber grip. Point size: 0.7mm. Ink matches clip.

200	500	1000	2500	
3.39	3.29	2.90	2.49	2ABC

* Pricing subject to change. Please confirm with sales rep.



uni
GBSG

uni-ball® 207 Gel Pen

The Classic 207 – the Professional's First Choice. Its comfortable textured grip allows for control as smooth, even-flowing uni Super Ink™ locks in ideas, protecting them from water, fading, & fraud. Point size: 0.7mm. Ink matches clip color. Refillable.

200	500	1000	2500	
2.99	2.90	2.55	2.19	2ABC

* Pricing subject to change. Please confirm with sales rep.



uni
WGBSG

uni-ball® White 207 Gel

The Classic 207 – the Professional's First Choice. Its comfortable textured grip allows for control as smooth, even-flowing uni Super Ink™ locks in ideas, protecting them from water, fading, & fraud. Point size: 0.7mm. Ink matches clip color.

200	500	1000	2500	
2.99	2.90	2.55	2.19	2ABC

* Pricing subject to change. Please confirm with sales rep.

UB26

uni-ball® one Gel Pen

Stylish design features a smooth barrel with a comfort grip. Metal clip functions as a paperclip. The fast drying, bleed resistant, bead packed pigment ensures a smooth writing performance. Point size: 0.7mm. Ink matches accent color.

200	500	1000	2500	
2.99	2.90	2.56	2.19	2ABC

* Pricing subject to change. Please confirm with sales rep.

uni.



IMPORTANT NOTE: The pricing reflected in this brochure is intended as a REFERENCE TOOL ONLY. Please refer to sales rep to confirm pricing, decoration methods, product info and PROP 65 info. | SET-UP: TruColor: Included. Pad Print: \$20.00(G)/location. RUN CHARGES: TruColor: \$0.20(G)/piece. Pad Print: 1st color/location included. Each add'l color/location \$0.10(G)/piece. For information on additional packaging options and variable data please contact customer service.



uni
GBFCG

uni-ball® 207 Fashion Pen

Brighten up your personal expression with pigment-based gel ink that bonds with paper for intense, vibrant lines. Premium grip provides superior writing comfort and control. Smooth, even-flowing uni Super Ink™ locks in ideas, protecting them from water, fading, & fraud.
Point size: 0.7mm. Ink matches plunger color. Refillable.

200	500	1000	2500	
3.09	3.00	2.65	2.29	2ABC

* Pricing subject to change. Please confirm with sales rep.



uni
GBFCA

uni-ball® 207 Pink Ribbon Pen

Give purpose and support with the 207 Pink Ribbon Pen. Features a pink barrel and Pink Ribbon logo. Premium grip provides superior writing comfort and control. Smooth, even-flowing uni Super Ink™ locks in ideas, protecting them from water, fading, & fraud.
Point size: 0.7mm. Ink: Black. Refillable.

200	500	1000	2500	
3.09	3.00	2.65	2.29	2ABC

* Pricing subject to change. Please confirm with sales rep.



uni.

GRTG

uni-ball® Gel RT Pen



A comfortable rubber grip combined with superb gel ink technology help deliver a smooth line to suit your smooth message. uni Super Ink™ technology protects against water, fading, & fraud. Point size: 0.7mm. Ink color: Ink matches trim color. Refillable.

250	500	1000	2500	
2.99	2.90	2.55	2.19	2ABC

* Pricing subject to change. Please confirm with sales rep.



uni.

GIRT

uni-ball® 207 Gel Impact Retractable Pen



A comfortable rubber grip combined with superb gel ink technology help deliver a smooth line to suit your smooth message. uni Super Ink™ technology protects against water, fading, & fraud. Point size: 1.0mm. Ink: Black, Blue, Red. Refillable.

150	250	500	1000	
4.59	4.46	3.94	3.39	2ABC

* Pricing subject to change. Please confirm with sales rep.



uni.

207BLX

uni-ball® 207 BLX Gel Pen



Add a touch of personal expression to your work with the rich, black-infused colors of the 207 BLX. Formulated for smooth, even ink flow, this series ensures that every word is brilliantly communicated. uni Super Ink™ locks in ideas, protecting them from water, fading, & fraud. Point size: 0.7mm. Ink matches barrel color. Refillable.

200	500	1000	2500	
3.29	3.18	2.80	2.39	2ABC

* Pricing subject to change. Please confirm with sales rep.



uni.

UB307

uni-ball® 307 Gel Ink Pen



World's first consumer application of high-tech Nano Fiber Ink. Superior smoothness, drying-speed, and line intensity. Write or draw effortlessly – even on glossy paper. Textured grip. uni Super Ink™ PLUS+ technology protects against water, fading & fraud. Point size: 0.7mm. Ink matches trim color. Refillable.

200	500	1000	2500	
3.69	3.57	3.14	2.69	2ABC

* Pricing subject to change. Please confirm with sales rep.



uni
GIC



uni-ball® 207 Gel Impact Capped Pen

Creates an even lay-down, creating strikingly bold lines. Comfortable grip. Ultrasmooth, acid-free ink. uni Super Ink™ technology protects against water, fading, & fraud. Point size: 1.0mm. Ink: Black, Blue, Red. Refillable.

150	250	500	1000	
4.39	4.25	3.74	3.19	2ABC

* Pricing subject to change. Please confirm with sales rep.

uni
GPRSG



uni-ball® 207 Gel Premier Pen

The responsive, ultra-soft cushion grip provides a comfortable writing experience. Featuring superior ink flow, the 207 Premier writes smoothly and dries quickly, forming an indelible bond with paper. Point size: 0.7mm. Ink: Black. Refillable.

75	150	300	600	
10.69	10.35	9.11	7.79	2ABC

* Pricing subject to change. Please confirm with sales rep.

uni
PSB



uni-ball® Power Tank RT Pen

The pressurized ink cartridge allows for writing on wet surfaces, in extreme cold & at odd angles, including upside down. uni Super Ink™ technology protects against water, fading, & fraud. Point size: 1.0mm. Ink color matches plunger color (white barrel features black ink). Refillable.

150	250	500	1000	
3.79	3.68	3.24	2.79	2ABC

* Pricing subject to change. Please confirm with sales rep.



uni
UBAIR

uni-ball® AIR Rollerball Pen

Write smoothly at any angle with bold ink laydown. AIR's unique cushion-tip technology provides an effortless writing experience. Elegantly designed for elevated style. uni Super Ink™ technology protects against water, fading & fraud. Point size: 0.7mm. Ink: Black, Blue. Non-refillable.

150	250	500	1000	
4.49	4.35	3.84	3.29	2ABC

* Pricing subject to change. Please confirm with sales rep.

uni
VESR

uni-ball® Vision Elite Pen

The Vision Elite is designed to withstand rapid pressure changes, making it the ideal choice for frequent flyers. uni Super Ink™ technology protects against water, fading, & fraud. Point size: 0.8mm. Ink: Black, Blue.

150	250	500	1000	
4.09	3.96	3.49	2.99	2ABC

* Pricing subject to change. Please confirm with sales rep.



uni
GFSR

uni-ball® Roller Grip Gel Pen

Textured grip. Steel tip for smooth writing. Featuring uni Super Ink™ technology that protects against water, fading & fraud. Point size: 0.7mm. Ink: Blue. Non-refillable.

250	500	1000	2500	
2.89	2.79	2.45	2.09	2ABC

* Pricing subject to change. Please confirm with sales rep.



uni
JSE

uni-ball® Jetstream Elements

Exclusive, low-viscosity Super Ink™ combines the quick drying time of a ballpoint with the vibrant color and smoothness of a gel pen. uni Super-Ink™ technology protects against water, fading, & fraud. Point size: 1.0mm. Ink color matches barrel color.

200	500	1000	2500	
3.49	3.39	3.00	2.59	2ABC

* Pricing subject to change. Please confirm with sales rep.



uni.

MGR



uni-ball® Micro Point Grey Pen

Delivers the silky-smooth glide of a fountain pen without smudging. uni Super Ink™ technology protects against water, fading & fraud. Durable metal clip. Point size: 0.5mm. Ink: Blue. Non-refillable.

250	500	1000	2500	
2.59	2.51	2.21	1.89	2ABC

* Pricing subject to change. Please confirm with sales rep.



uni.

DCFR



uni-ball® Deluxe Fine Point Pen

Superior Everyday Performance. Deluxe's gleaming, brushed-steel exterior writes in style. uni Super Ink™ technology protects against water, fading & fraud. Point size: 0.7mm. Ink: Black, Blue. Non-refillable.

150	250	500	1000	
4.09	3.96	3.49	2.99	2ABC

* Pricing subject to change. Please confirm with sales rep.



uni.

DPMR



uni-ball® Deluxe Micro Point Pen

Superior Everyday Performance. Deluxe's gleaming, brushed-steel exterior writes in style. uni Super Ink™ technology protects against water, fading & fraud. Point size: 0.5mm. Ink: Black, Blue, Red. Non-refillable.

150	250	500	1000	
4.09	3.96	3.49	2.99	2ABC

* Pricing subject to change. Please confirm with sales rep.



uni.

MPR



uni-ball® Micro Point Pearlized Pen

Delivers the silky-smooth glide of a fountain pen without smudging. uni Super Ink™ technology protects against water, fading & fraud. Durable metal clip. Point size: 0.5mm. Ink: Black. Non-refillable.

250	500	1000	2500	
2.59	2.51	2.21	1.89	2ABC

* Pricing subject to change. Please confirm with sales rep.



uni
CBHW



uni-ball® Combi White Highlighter Pen

A 2-in-1 office solution that features the trusted name brand and quality of uni-ball® with the convenience of an attached highlighter. One side has a medium point ink pen while the opposite end has a yellow, fluorescent ink highlighter. Ink: Black, Blue. Non-refillable.

250	500	1000	2500	
2.59	2.51	2.21	1.89	2ABC

* Pricing subject to change. Please confirm with sales rep.



uni
CBHSW



uni-ball® Combi Highlighter Pen

A 2-in-1 office solution that features the trusted name brand and quality of uni-ball® with the convenience of an attached highlighter. One side has a medium point black ink pen while the opposite end has a yellow, fluorescent ink highlighter. Ink: Black. Non-refillable.

250	500	1000	2500	
2.59	2.51	2.21	1.89	2ABC

* Pricing subject to change. Please confirm with sales rep.

uni.



UB28

uni-ball® Jetstream Recycled Ocean Plastic Pen

Eco-friendly ballpoint pen made from recycled marine plastic waste and empty disposable contact lens cases. A first in the stationery industry to receive Eco Mark certification and award, with revolutionary ink that provides smooth writing experience and quick drying. Blue pen with Moebius strip clip shape. Point size: 0.7mm. Ink: Black.

200	500	1000	2500	
5.19	5.03	4.43	3.79	2ABC

* Pricing subject to change. Please confirm with sales rep.

IMPORTANT NOTE: The pricing reflected in this brochure is intended as a REFERENCE TOOL ONLY. Please refer to sales rep to confirm pricing, decoration methods, product info and PROP 65 info. | SET-UP: TruColor: Included. Pad Print: \$20.00(G)/location. RUN CHARGES: TruColor: \$0.20(G)/piece. Pad Print: 1st color/location included. Each add'l color/location \$0.10(G)/piece. For information on additional packaging options and variable data please contact customer service.



uni

JBR



uni-ball® Jetstream Sport

Exclusive, low-viscosity Super Ink™ combines the quick drying time of a ballpoint with the vibrant color and smoothness of a gel pen. uni Super-Ink™ technology protects against water, fading, & fraud. Point size: 1.0mm. Ink color matches plunger color (white barrel features black ink).

200	500	1000	2500	
3.49	3.39	3.00	2.59	2ABC

* Pricing subject to change. Please confirm with sales rep.



uni

UB537



uni-ball® Chroma Pencil (0.7mm)

Auto-advancing lead provides a seamless writing experience. Features a hexagonal eraser - 12 points and edges for optimal corrections. Sleek design with metal clip and comfort grip. Point size: 0.7mm.

200	500	1000	2500	
4.39	4.25	3.74	3.19	2ABC

* Pricing subject to change. Please confirm with sales rep.



NEW

EL230

15W Karaoke Wireless Speaker with 2 Mics

Portable MC speaker with 2 wireless microphones. Features color changing LED light modes, 5 sound effects, reverb, echo and vocal cut functions. Up to 4-10 hours playtime. Includes Type-C USB charging cable.

6	12	36	72
62.69	60.77	58.84	54.99 4C

* Pricing subject to change. Please confirm with sales rep.

IMPORTANT NOTE: The pricing reflected in this brochure is intended as a REFERENCE TOOL ONLY. Please refer to sales rep to confirm pricing, decoration methods, product info and PROP 65 info. | SET-UP: TruColor/Laser Engraving: \$60.00(G)/location. Pad Print: \$60.00(G) color/location. RUN CHARGES: TruColor: 1 location (full color) std. imprint area included. Each add'l location: \$0.50(G)/piece. Pad Print: 1st std. color/location included. Each add'l color/location \$0.50(G)/piece. Laser Engraving: 1st location included. Each add'l location \$1.20(G)/piece.



EL198

20W Solar IPX7 Bluetooth® Speaker/Power Bank

Rugged IPX7 waterproof 20 watt Bluetooth® speaker (2 x 10 watt) and 5,000 mAh capacity power bank. Recharge via micro USB cable or monocrystalline silicon 5V/220mA solar panel. Features TF card slot and built-in mic for hands-free calls. Includes micro USB charging cable, 3.5 mm audio cable and loop lanyard.

4	12	36	72	
96.09	93.31	90.54	84.99	4C

* Pricing subject to change. Please confirm with sales rep.



EL225

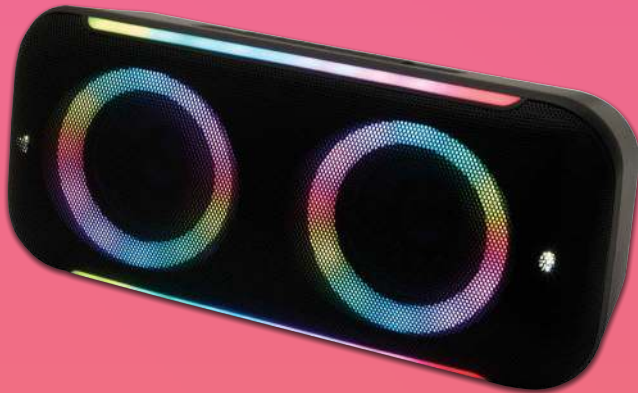
NEW

10W TWS FSC Wood Wireless Speaker

Constructed using 100% FSC-certified source wood exterior. The 10-watt Bluetooth® speaker features 8 hours of playtime, dual paired TWS compatible, and a 30 standby minute auto shut off. Operating range of 33 feet/10M.

4	12	36	72	
74.09	71.81	69.54	64.99	4C

* Pricing subject to change. Please confirm with sales rep.



EL218

NEW

40W Boombeats Speaker

Premium sound 40-watt Bluetooth® speaker features multiple party light modes with an IPX6 Certified rating. Up to 7 hours of battery life. Dual paired TWS compatible. Recharge via Type-C cable. Operating range of 33 feet/10M.

4	12	36	72	
107.39	104.29	101.19	94.99	4C

* Pricing subject to change. Please confirm with sales rep.



EL157

5W Solar Waterproof Bluetooth® Speaker

Rugged 5 watt Bluetooth® speaker that is rechargeable via micro USB cable or high efficiency monocrystalline solar panel. IPX6 waterproof rating and M8 screw hole for bike mount (bike mount not included). Green solar charging indicator light. Built-in mic for hands-free calls.

12	25	50	100	
51.49	49.87	48.24	44.99	4C

* Pricing subject to change. Please confirm with sales rep.

EL161

10W Waterproof 360 Degree Bluetooth® Speaker

Indoor/outdoor IPX7 waterproof 10 watt Bluetooth® speaker. Powerful 360 degree sound. Built-in mic for hands-free calls. Includes USB/Micro charging cable and 3.5 mm audio cable.

6	12	36	72
70.69	68.52	66.34	61.99 4C

* Pricing subject to change. Please confirm with sales rep.



IMPORTANT NOTE: The pricing reflected in this brochure is intended as a REFERENCE TOOL ONLY. Please refer to sales rep to confirm pricing, decoration methods, product info and PROP 65 info. | SET-UP: TruColor/Laser Engraving: \$60.00(G)/location. Pad Print: \$60.00(G) color/location. RUN CHARGES: TruColor: 1 location (full color) std. imprint area included. Each add'l location: \$0.50(G)/piece. Pad Print: 1st std. color/location included. Each add'l color/location \$0.50(G)/piece. Laser Engraving: 1st location included. Each add'l location \$1.20(G)/piece.



EL224

NEW

10W Wireless Charging/Party Light 5W Speaker

Light up, color changing 5W wireless speaker with 10W wireless charging surface. Features a fabric exterior, a Bamboo wood top surface, and non-slip top ring and bottom. Up to 8 hours of speaker play. Top and bottom lights feature multiple color changing and light off modes. Includes USB-C charging cable.

9	18	36	72
45.89	44.42	42.94	39.99 4C

* Pricing subject to change. Please confirm with sales rep.



EL79

RoxBox™ Cyclone Bluetooth® Speaker

Rugged Bluetooth® speaker produces exceptional sound quality. IPX5 water resistant rating with carabiner makes it ideal for outdoor activities. Aux-in and built-in mic for hands-free calling.

9	18	36	72
40.19	38.89	37.59	34.99 4C

* Pricing subject to change. Please confirm with sales rep.



EL217

NEW

20W Boombests Speaker

Premium sound 20-watt Bluetooth® speaker features multiple party light modes with an IPX6 Certified rating. Up to 8 hours of battery life. Dual paired TWS compatible. Recharge via Type-C cable. Operating range of 33 feet/10M.



4	12	36	72	
74.09	71.81	69.54	64.99	40

* Pricing subject to change. Please confirm with sales rep.



IMPORTANT NOTE: The pricing reflected in this brochure is intended as a REFERENCE TOOL ONLY. Please refer to sales rep to confirm pricing, decoration methods, product info and PROP 65 info. | SET-UP: TruColor/Laser Engraving: \$60.00(G)/location. RUN CHARGES: TruColor: 1 location (full color) std. imprint area included. Each add'l location: \$0.50(G)/piece. Laser Engraving: 1st location included. Each add'l location \$1.20(G)/piece.



EL223

NEW

5W Wireless Light Up Ring Party Speaker

Light up, color changing 5W wireless speaker. Features an ABS exterior, fabric mesh, non-skid bottom and integrated hang cord. Up to 8 hours of speaker play. Bottom light ring feature multiple color changing and light off modes. Includes USB-C charging cable.

12	25	50	100
28.69	27.77	26.84	24.99 4C

* Pricing subject to change. Please confirm with sales rep.



EL216

BOOMPODS + #tide NEW

BoomPods™ Beachboom 5W Speaker

Sustainably made, rugged IPX7 rated 5-watt speaker with bass-driven sound. Made from BoomPods™ x #tide ocean SA transformed ocean material into sustainable products. Features up to 5 hours of battery life, dual paired capable, built-in selfie button, hang cord, and Siri/Google Assistant capable.

9	18	36	72
44.69	43.27	41.84	38.99 4C

* Pricing subject to change. Please confirm with sales rep.



EL149

Hampton Bluetooth® Speaker

3 watt Bluetooth® speaker. Features Micro SD, FM Scan Radio, Aux-in and built-in mic for hands-free calling.

24	48	96	244
20.59	19.94	19.29	17.99 4C

* Pricing subject to change. Please confirm with sales rep.



EL179

10W Ikon Waterproof Bluetooth® 360 Degree Speaker

Indoor/outdoor waterproof 10 watt Bluetooth® speaker. Features a TF card slot. Aux-in and built-in mic for hands-free calling. IPX7 waterproof rating.

6	12	36	72
54.99	53.24	51.49	47.99 4C

* Pricing subject to change. Please confirm with sales rep.



EBY01

Biconic™ Lantern Color Changing Wireless Speaker

Light up, color changing 3W Bluetooth® speaker. Touch control enables 3 brightness levels, 7 color options and different light modes. Features media shortcut keys, hideaway bottom handle, TF/Micro SD card slot, and approx up to 2 hours of playtime. Includes USB-C charging cable.

12	25	50	100	
33.29	32.22	31.14	28.99	4C

* Pricing subject to change. Please confirm with sales rep.



EBY07

Biconic™ Rugged Waterproof Wireless Speaker

Rugged IP67 rated 10 watt Bluetooth® speaker (2 x 5 watt). Features FM radio function, media shortcut keys, and built-in mic/hands-free controls. Approx 20 hours of playtime and up to 5-hour recharge time. Includes USB-micro USB charging cable and 3.5 mm AUX cable.

6	12	36	72	
99.49	96.62	93.74	87.99	4C

* Pricing subject to change. Please confirm with sales rep.



EL85



Persona® Bluetooth® Speaker

3 watt Bluetooth® speaker. Mini/USB cable acts as the antenna for the built-in FM radio. Micro SD card slot. Choose from 13 Persona® color bands.

18	36	72	144	
24.09	23.32	22.54	20.99	4C

* Pricing subject to change. Please confirm with sales rep.



EL209

Urban Peak® 20W TWS Party Barrel Wireless Speaker

Rugged 20-watt Bluetooth® speaker features 2 solar recharging panels with an IP66 Certified rating. 7 color changing modes. Up to 20 hours playtime. Recharge via Type-C cable or solar. LED light panel output: 175 lumens with 5 modes. Operating range of 33 feet/10M.

6	12	36	72	
96.09	93.31	90.54	84.99	4C

* Pricing subject to change. Please confirm with sales rep.

IMPORTANT NOTE: The pricing reflected in this brochure is intended as a REFERENCE TOOL ONLY. Please refer to sales rep to confirm pricing, decoration methods, product info and PROP 65 info. | SET-UP: TruColor/Laser Engraving: \$60.00(G)/location. Pad Print: \$60.00(G) color/location. RUN CHARGES: TruColor: 1 location (full color) std. imprint area included. Each add'l location: \$0.50(G)/piece. Pad Print: 1st std. color/location included. Each add'l color/location \$0.50(G)/piece. Laser Engraving: 1st location included. Each add'l location \$1.20(G)/piece.



EL221

Boompods™ Noise Canceling Echobuds

Active noise cancelling, true wireless earbuds housed in a slim charger case. Made from recycled ABS plastic. Dynamic drivers deliver a rich, powerful bass. Open-ear option for situational awareness. Up to 26 hours of play/talk time. Includes 3 sizes of ear tips and a USB-C charging cable.



9	18	36	72
37.89	36.66	35.44	32.99 4C

* Pricing subject to change. Please confirm with sales rep.



EBY05

NEW

Biconic™ Focus True Wireless Earbuds & Case

Bluetooth® wireless earbuds housed in a smooth Rubber finish recharger case. Up to 20 hours of play/talk time. Auto pairing capability and built-in mic/ on-ear touch controls. Secure closure case. Operating range 33ft/10m. Connect via Bluetooth® V 5.0.

12	25	50	100	
28.69	27.77	26.84	24.99	4C

* Pricing subject to change. Please confirm with sales rep.



EL190

Forte TWS Wireless Earbuds and Charger Case

Wireless earbuds housed in a 300 mAh recharger case with magnetic latch. Plays music (stereo) and hands-free calls (stereo). Red, blue, and green indicator lights reflect the power levels and recharge status. Includes Micro USB charging cable. Connects via V 5.0.

18	36	72	144	
24.59	23.82	23.04	21.49	4C

* Pricing subject to change. Please confirm with sales rep.



EL193

Swivel TWS Wireless Earbuds and Charger Case

Wireless earbuds housed in a 400 mAh recharger case with a sleek, swivel lid. Plays music (stereo) and hands-free calls (stereo). Blue and red indicator lights reflect the charger case and earbud power levels. Includes micro USB charging cable.

18	36	72	144	
24.59	23.82	23.04	21.49	4C

* Pricing subject to change. Please confirm with sales rep.



EL176

Atune Bluetooth® Earbuds with Charger Case

Bluetooth® wireless earbuds housed in a 350 mAh recharger case. Plays music (stereo) and hands-free calls (stereo). Blue and red indicator lights reflect the charger case and earbud power levels. Auto shut-off after 5 standby minutes. Includes micro USB charging cable.

18	36	72	144	
25.19	24.39	23.59	21.99	4C

* Pricing subject to change. Please confirm with sales rep.



IH05

iHome® XT-57 True Wireless Earbuds and Charger Case

Bluetooth® wireless earbuds housed in a digital display 300 mAh charger case. Sweat, splash and weather resistant. Case is wireless charge capable. Earbuds and case provide up to 30 hours of play/talk time. Includes 3 sizes of ear tips and a USB-C charging cable.

12	25	50	100	
51.49	49.87	48.24	44.99	4C

* Pricing subject to change. Please confirm with sales rep.



EL204

Cherry Wood TWS Wireless Earbuds and Charger Case

Real wood grain accents on wireless earbuds housed in a 240 mAh recharger case. Plays music (stereo), and hands-free calls (stereo). Red & white indicator lights reflect charging status. Includes Type-C charging cable and 3 size ear tips. Connects via V 5.0.

9	18	36	72	
61.79	59.84	57.89	53.99	4C

* Pricing subject to change. Please confirm with sales rep.



EBY08

Bytech® True Wireless Earbuds

Wireless earbuds housed in a 350 mAh recharger case. Pre-paired and ready to use. Up to 3 hours of play/talk time and 300 hours of standby time. Includes micro-USB charging cable and 3 ear tip sizes. Operating range 33ft/10m. Connect via Bluetooth® V 5.0.

24	48	96	244	
18.29	17.71	17.14	15.99	4C

* Pricing subject to change. Please confirm with sales rep.



EL210

EarthTrendz™ Wheat Straw & Bamboo Earbuds & Case

Constructed using eco-friendly materials including wheat straw and bamboo. Wireless earbuds housed in a 200 mAh recharger case. Up to 3 hours of play/talk time and 80 hours of standby time. Includes Type-C USB charging cable. Operating range 33ft/10m. Connect via V 5.1.

12	25	50	100	
22.89	22.16	21.44	19.99	4C

* Pricing subject to change. Please confirm with sales rep.

NEW



BICONIC™

EBY04

NEW

Biconic™ Powertune True Wireless Earbuds & Case

Bluetooth® wireless earbuds housed in a built-in 2,000 mAh power bank/recharger case. Up to 60 hours of play/talk time. Built-in mic/ on-ear touch controls. Secure closure case. Operating range 33ft/10m. Connect via Bluetooth® V 5.0.

12	25	50	100	
32.09	31.07	30.04	27.99	4C

* Pricing subject to change. Please confirm with sales rep.



iHome

IH03

iHome® XT-49 True Wireless Earbuds and Charger Case

Bluetooth® wireless earbuds housed in a 400 mAh charger case. Sweat, splash and weather resistant. Ear sensors automatically pause audio when removed from ears. Earbuds and case provide up to 30 hours of play/talk time. Includes 3 sizes of ear tips and a USB-C charging cable.

6	12	36	72	
66.09	64.06	62.04	57.99	4C

* Pricing subject to change. Please confirm with sales rep.



EL228

NEW

Elevate ANC Earbuds

Active noise cancelling earbuds housed in a slim travel pod case. Features transparency and noise cancelling mode. IPX4 rated sweatproof. Up to 19 hours of play/talk time. Includes 3 sizes of ear tips and a Type-C USB charging cable.

12	25	50	100	
27.49	26.61	25.74	23.99	4C

* Pricing subject to change. Please confirm with sales rep.



BOOMPDS™

EL229

NEW

BoomPods™ TWS Sleep DreamBuds

Wireless earbuds housed in a slim travel pod case. Flat, secure in-ear fit design is ideal for side sleepers. IPX4 rated sweatproof. Up to 19 hours of play/talk time. Includes a Type-C USB charging cable.

12	25	50	100	
34.39	33.29	32.19	29.99	4C

* Pricing subject to change. Please confirm with sales rep.

IMPORTANT NOTE: The pricing reflected in this brochure is intended as a REFERENCE TOOL ONLY. Please refer to sales rep to confirm pricing, decoration methods, product info and PROP 65 info. | SET-UP: TruColor/Laser Engraving: \$60.00(G)/location. RUN CHARGES: TruColor: 1 location (full color) std. imprint area included. Each add'l location: \$0.50(G)/piece. Laser Engraving: 1st location included. Each add'l location \$1.20(G)/piece.



EL220

BoomPods™ Echobuds

True wireless earbuds with extra bass housed in a slim travel charger case. Made from recycled ABS plastic and is IPX4 rated sweatproof. Earbuds and case provide up to 19 hours of play/talk time. Includes 3 sizes of ear tips and a USB-C charging cable.

12	25	50	100	
29.79	28.84	27.89	25.99	4C

* Pricing subject to change. Please confirm with sales rep.



EL222

BoomPods™ Vibe Earbuds

True wireless earbuds with extra bass housed in an illuminating charger case. Made from ABS plastic and is IPX4 sweatproof. Blue interior lights indicate power level. Earbuds and case provide up to 25 hours of play/talk time. Includes 3 sizes of ear tips and a USB-C charging cable.

9	18	36	72	
36.69	35.52	34.34	31.99	4C

* Pricing subject to change. Please confirm with sales rep.





NEW

EL226

Dual Port Bamboo/rPET Powerbank - 5,000mAh

5,000 mAh power bank capacity. Constructed using a blend of sustainable materials like FSC Bamboo and rPET fabric. Compact, portable battery pack with dual Type-C and USB-A ports. LED charging indicator. Includes micro USB charging cable.

12	25	50	100	
21.79	21.09	20.39	18.99	4C

** Pricing subject to change. Please confirm with sales rep.*

IMPORTANT NOTE: The pricing reflected in this brochure is intended as a REFERENCE TOOL ONLY. Please refer to sales rep to confirm pricing, decoration methods, product info and PROP 65 info. | SET-UP: TruColor/Laser Engraving: \$60.00(G)/location. RUN CHARGES: TruColor: 1 location (full color) std. imprint area included. Each add'l location: \$0.50(G)/piece. Laser Engraving: 1st location included. Each add'l location \$1.20(G)/piece.



EL227

NEW

Trio Port Solar Charge LED Power Bank - 8,000mAh

Recharge the power bank wirelessly via a Monocrystalline solar panel or with a USB-C cable. 8,000 mAh power bank capacity with 3 USB charging ports and a 21 LED light panel (approx. 462 lumen output). Includes a USB-C charging cable.

9	18	36	72	
44.69	43.27	41.84	38.99	4C

* Pricing subject to change. Please confirm with sales rep.



EL169

UL Certified Grip Wireless Charger & Power Bank - 4000 mAh

UL Certified. 4,000 mAh grade A battery. Features 8 built-in suction cups to grip onto device. Made from a white ABS plastic shell with gray PC trim. Includes a power button and charging indicator lights.

12	25	50	100	
40.19	38.89	37.59	34.99	4C

* Pricing subject to change. Please confirm with sales rep.



EL144

Flip Stand Power Bank - 4000 mAh

A dual 4,000 mAh power bank and a flip-up phone stand. Includes LED power indicator lights that illuminate when in use.

24	48	96	244	
19.49	18.87	18.24	16.99	4C

* Pricing subject to change. Please confirm with sales rep.



EL231

NEW

EarthTrendz™ 10,000mAh Solar/Wireless Powerbank

Constructed using eco-friendly material Bamboo. Recharge the power bank wirelessly via a Monocrystalline solar panel or with a charging cable. 10,000 mAh power bank capacity with a wireless charging surface and dual USB-A ports. Includes a USB-C charging cable.

12	25	50	100	
26.39	25.54	24.69	22.99	4C

* Pricing subject to change. Please confirm with sales rep.



EL212 **NEW**

EarthTrendz™ Solar / Magnetic Wireless Power Bank - 10000 mAh

Constructed using eco-friendly materials like Wheat Straw mix. Recharge the power bank wirelessly via a Monocrystalline solar panel or with a USB cable. 10,000 mAh power bank capacity with a wireless charging magnetic surface and dual USB ports. Includes a USB-C charging cable.

24	48	96	244	
43.59	42.19	40.79	37.99	4C

* Pricing subject to change. Please confirm with sales rep.



EL211 **NEW**

EarthTrendz™ Magnetic Wireless Power Bank - 5000 mAh

Constructed using eco-friendly materials including Wheat Straw mix and Bamboo. Recharge a device wirelessly or with the built-in Type-C charging cable and lightning adapter. Wireless charging magnetic surface and a retractable kickstand. Built-in charging cable can recharge power bank with wall adapter (not included).

24	48	96	244	
30.99	29.99	28.99	26.99	4C

* Pricing subject to change. Please confirm with sales rep.



EL208

Magnetic Wireless Charger & Power Bank - 10000 mAh

Recharge wirelessly or with any of the 3 built-in charging cables: Type-C, lightning, and micro-USB. 10,000 mAh power bank capacity with a wireless charging magnetic surface and a digital power level display. ABS black Plastic shell. Includes 4th built-in USB charging cable (USB power adapter not included).

12	25	50	100	
51.49	49.87	48.24	44.99	4C

* Pricing subject to change. Please confirm with sales rep.



EBY03

Bytech® Universal Dual Power Bank - 10000 mAh

A 10,000 mAh power bank with dual standard USB Output. LED battery indicator. Built-in over-charge protection.

12	25	50	100	
35.59	34.44	33.29	30.99	4C

* Pricing subject to change. Please confirm with sales rep.



EL173

UL Certified Glow Power Bank - 8000 mAh

8000 mAh grade A battery. Laser engraved logo lights up while charging. Includes dual USB ports, a power button and charging indicator lights. Made from a black/graphite ABS plastic shell.

18	36	72	144
42.39	41.04	39.69	36.99 4C

* Pricing subject to change. Please confirm with sales rep.



EL172

UL Certified Glow Power Bank - 4000 mAh

4000mAh grade A battery. Laser engraved logo lights up while charging. Includes a power button and charging indicator lights. Made from a silver ABS plastic shell.

18	36	72	144
33.29	32.22	31.14	28.99 4C

* Pricing subject to change. Please confirm with sales rep.



EL188

UL Certified Tri-Way Wireless Charger & Power Bank - 10000 mAh

Recharge wirelessly or with USB cables. 10,000 mAh power bank capacity with dual USB ports. Constructed of Aluminum with a Silicone charging pad. LED charging indicator. Includes micro USB charging cable.

12	25	50	100
50.39	48.79	47.19	43.99 4C

* Pricing subject to change. Please confirm with sales rep.



EL171

Omni Charge Power Bank - 5000 mAh

5000 mAh capacity with a built-in 2-in-1 reversible charging cable (side 1: Android / side 2: iOS). Also includes a hidden Type-C adapter. Features LED charging indicator lights. Made from a white ABS plastic shell.

18	36	72	144
32.09	31.07	30.04	27.99 4C

* Pricing subject to change. Please confirm with sales rep.



EL167

Bamboo Print Wireless Charger

Thin and lightweight wireless charging pad made of ABS white plastic with a bamboo print surface and non-slip feet. Features charging indicator light ring. Includes micro USB charging cable (USB power adapter not included).

24	48	96	244
20.59	19.94	19.29	17.99 4C

* Pricing subject to change. Please confirm with sales rep.



EBY06

Case Logic® Wireless Charging Pad

Thin, 10W wireless charging pad with non-slip Silicone surface. Features charging indicator light and overcharge protection. Includes micro USB charging cable (USB power adapter not included) and manual.

12	25	50	100
34.39	33.29	32.19	29.99 4C

* Pricing subject to change. Please confirm with sales rep.

EL215



NEW



Boompods™ Boomtag

Sustainably made, rugged IPX5 waterproof portable item tracker tag. Made from Boompods™ x #tide ocean SA transformed ocean material into sustainable products. Features up to 1 year battery life, compatible with Apple Find My app, and battery can be replaced (not included).

12	25	50	100
26.39	25.54	24.69	22.99 4C

* Pricing subject to change. Please confirm with sales rep.



NEW

EL214

Universal Travel 2 USB / 2 Type-C Adapter

Fits most international plugs and wall sockets in over 150+ countries. Features 4 AC power plugs (US, AUS, UK and EU) and 2 smart Type-C ports (2.4A max output per port) and 2 smart USB-A ports (3A max output per port). Removable, replaceable 8A fuse.

12	25	50	100
32.09	31.07	30.04	27.99 4C

* Pricing subject to change. Please confirm with sales rep.



You might also like

EL163

EL183

EL194

DC36

DC33



Oasis Wireless Charger

as low as \$10.99 (C)



5W Bamboo Desktop Wireless Charger

as low as \$20.99 (C)



Mini Octo Grip Wireless Charger & Power Bank-5000 mAh

as low as \$29.99 (C)



Digital Weather Station and Wireless Charger

as low as \$42.99 (C)



Habitat In/Outdoor Weather Station

as low as \$54.99 (C)



EBY26

Deep Tissue Therapy Massager

Portable and lightweight massager offers muscle therapy. Features 6 speeds and 4 interchangeable focus tips: small flat head, ball head, tip head, and u-head. Includes charging cable and user manual.

6	12	36	72
55.09	53.32	51.54	47.99 4C

* Pricing subject to change. Please confirm with sales rep.

NEW



IMPORTANT NOTE: The pricing reflected in this brochure is intended as a REFERENCE TOOL ONLY. Please refer to sales rep to confirm pricing, decoration methods, product info and PROP 65 info. | SET-UP: TruColor/Laser Engraving: \$60.00(G)/ location. Pad Print: \$60.00(G) color/location. RUN CHARGES: TruColor: 1 location (full color) std. imprint area included. Each add'l location: \$0.50(G)/piece. Each add'l square inch beyond std. area \$0.24(G) per piece/location. Pad Print: 1st std. color/ location included. Each add'l color/location \$0.50(G)/piece. Laser Engraving: 1st location included. Each add'l location \$1.20(G)/piece.



EBY12

Sealy® Electric Pulse Neck Massager

TENS frequency pulse massager for chronic neck pain relief. Stainless Steel electrodes. 12 pulse modes: kneading, hammering, acupuncture, massage, pulse, simulation, slow, beat, fist pressing, percussion, auto mode 1, and auto mode 2. Massage times: 15-minute cycles. Uses 2 AAA batteries (included).

12	25	50	100	
27.49	26.61	25.74	23.99	4C

* Pricing subject to change. Please confirm with sales rep.



EBY13

Sealy® Massage Belt

Portable and lightweight belt provides decompression back support and therapy using heat, air compression, and vibration. Auto shutoff. 3 massage modes with 3 heat levels (up to 104F to 114F / 40C to 45C) offering 18 relaxing combinations. Fits up to 46" waist. Power source: 5V-2A adaptor (included).

6	12	36	72	
66.09	64.06	62.04	57.99	4C

* Pricing subject to change. Please confirm with sales rep.



EBY09

Sealy® Deep Tissue Therapy Mini Massager

Portable and lightweight massager offers deep muscle relief. 6 speed high frequency vibration; 4 interchangeable heads: small flat head, ball head, tip head, and u-head. 7.4V working voltage with 30W motor power. ABS Plastic. Battery life: 300 minutes.

6	12	36	72	
57.29	55.47	53.64	49.99	4C

* Pricing subject to change. Please confirm with sales rep.



EBY10

Sealy® Hot / Cold Massager Pro

Lightweight and noiseless massager relieves muscle soreness & stiffness with hot & cold therapy. 6 speed high frequency vibration with 6 interchangeable heads: cold, hot, small flat head, ball head, tip head, and u-head. LCD display and rubberized finish. 30W motor power.

3	12	36	72	
84.89	82.42	79.94	74.99	4C

* Pricing subject to change. Please confirm with sales rep.



EL234

NEW

Rechargeable Slim 3 Speed Desk Fan

Lightweight and slim fan features 3 speed levels and LED blue light indicator. Built-in flip stand and up to 2 hour (low speed) runtime. Includes a Type-C USB charging cable..

24	48	96	244
13.69	13.27	12.84	11.99 4C

* Pricing subject to change. Please confirm with sales rep.



EBY21

Sealy® Color Changing LED Humidifier

Wood print finish humidifier with 130ml tank capacity, covering 100 sq. ft. area. Multicolor light modes. Built-in auto on/off overheat protection. Working time: 4 hours continuous mist; 8 hours intermittent mist. Works with all water-soluble essential oils.

12	25	50	100
25.19	24.39	23.59	21.99 4C

* Pricing subject to change. Please confirm with sales rep.



EBY15

Sealy® Night Light & White Noise Sound Machine

White noise therapy with 7 multicolor mood lights, 3 brightness levels and 34 sleep sound modes like white noise, nature, fan sounds, light music and more. Adjustable time settings. 10 hours playtime. Rechargeable battery.

6	12	36	72
51.49	49.87	48.24	44.99 4C

* Pricing subject to change. Please confirm with sales rep.



EBY20

Sealy® Color Changing LED Humidifier White

White marble print finish humidifier with 130ml tank capacity, covering 100 sq. ft. area. Multicolor light modes. Built-in auto on/off overheat protection. Working time: 4 hours continuous mist; 8 hours intermittent mist. Works with all water-soluble essential oils.

12	25	50	100
25.19	24.39	23.59	21.99 4C

* Pricing subject to change. Please confirm with sales rep.

IMPORTANT NOTE: The pricing reflected in this brochure is intended as a REFERENCE TOOL ONLY. Please refer to sales rep to confirm pricing, decoration methods, product info and PROP 65 info. | SET-UP: TruColor/Laser Engraving: \$60.00(G)/ location. RUN CHARGES: TruColor: 1 location (full color) std. imprint area included. Each add'l location: \$0.50(G)/piece. Each add'l square inch beyond std. area \$0.24(G) per piece/location. Laser Engraving: 1st location included. Each add'l location \$1.20(G)/ piece.



EBY17

Sealy® 5-in-1 Multifunction Wireless Speaker

Wireless Bluetooth® speaker with 15 watt wireless charging surface. 5 multi-function features include clock, 2 alarm modes, night light, temperate, and snooze mode. Up to 3 hours of playtime. Includes USB-C charging cable.

6	12	36	72
57.29	55.47	53.64	49.99 4C

* Pricing subject to change. Please confirm with sales rep.



NEW

EBY23

Sealy® Personal Digital Scale

Sleek slim design weight scale. Features 4-digit display LED screen showing units in lbs/kgs and automatic shutoff. 2x AAA battery powered. Non-waterproof.

12	25	50	100
33.29	32.22	31.14	28.99 4C

* Pricing subject to change. Please confirm with sales rep.





KS76

NEW

Niagara Cutlery™ Acacia Cheese Board Set

Set includes the Niagara Cutlery™ Acacia cheese board with cheese knife. Board and knife handle crafted out of Acacia wood and knife blade out of Stainless Steel. Imprint included on cutting board. Due to the natural variations in wood, individual boards and imprint can vary color and pattern.

12	25	50	100	
24.09	23.32	22.54	20.99	4C

* Pricing subject to change. Please confirm with sales rep.





KS75

Bryce Acacia Cutting Board (L)

NEW

Acacia wood cutting board measures 0.5"H x 15"W x 10"D. Includes metal corner handle for carrying or hanging. Hand wash recommended. Due to the natural variations in wood, individual boards and imprint can vary color and pattern.

9	18	36	72
30.99	29.99	28.99	26.99 4C

* Pricing subject to change. Please confirm with sales rep.



KS74

Bryce Acacia Cutting Board (M)

NEW

Acacia wood cutting board measures 0.5"H x 12.25"W x 8"D. Includes metal corner handle for carrying or hanging. Hand wash recommended. Due to the natural variations in wood, individual boards and imprint can vary color and pattern.

12	25	50	100
26.39	25.54	24.69	22.99 4C

* Pricing subject to change. Please confirm with sales rep.



KS72

Oblong Acacia Cutting Board (M)

NEW

Acacia wood cutting board measures 0.625"H x 14"W x 8.25"D. Use for food chopping, prepping and serving. Hand wash recommended. Due to the natural variations in wood, individual boards and imprint can vary color and pattern.

12	25	50	100
22.89	22.16	21.44	19.99 4C

* Pricing subject to change. Please confirm with sales rep.



KS73

Oblong Acacia Cutting Board (L)

NEW

Acacia wood cutting board measures 0.625"H x 17"W x 7"D. Use for food chopping, prepping and serving. Hand wash recommended. Due to the natural variations in wood, individual boards and imprint can vary in color and pattern.

12	25	50	100
26.39	25.54	24.69	22.99 4C

* Pricing subject to change. Please confirm with sales rep.



NCS01M

Niagara Cutlery™ Maple Arch Cutting Board 12"

Natural Maple wood cutting board measures 9"H x 0.75"W x 12"D. Made in North America. Hand wash. *Image shows board prior to recommended conditioning.

12	25	50	100
41.29	39.97	38.64	35.99 4C

* Pricing subject to change. Please confirm with sales rep.



NCS07C

Niagara Cutlery™ Cherry Handle Cutting Board 16"

Natural Cherry wood cutting board measures 10.5"H x 0.75"W x 16"D. Made in North America. Hand wash only. *Image shows board prior to recommended conditioning.

12	25	50	100
57.79	55.97	54.14	50.49 4C

* Pricing subject to change. Please confirm with sales rep.



NCS08C

Niagara Cutlery™ Cherry Charcuterie Board 14"

Cherry wood cutting board measures 8"H x 0.75"W x 14"D. Features angled thumb hole and is made in North America. Hand wash only. Due to the natural variations in wood, individual boards and imprint can vary in color and pattern. *Image shows board prior to recommended conditioning.

12	25	50	100
45.89	44.42	42.94	39.99 4C

* Pricing subject to change. Please confirm with sales rep.

JJ016

Joseph Joseph

Joseph Joseph® Folio™ Steel 4-piece Cut Board Set

Four color-coded, knife-friendly textured cutting boards with non-slip feet. Stainless Steel case helps keep airflow between boards for quick and hygienic drying and storage. Boards are dishwasher safe; case is wipe clean.

3	12	36	72
112.49	109.37	106.24	99.99 4C

* Pricing subject to change. Please confirm with sales rep.

NEW



JJ015

NEW

Joseph Joseph® Folio™ Icon 4-piece Cut Board Set

Four color-coded, knife-friendly textured cutting boards with non-slip feet. Plastic case helps keep airflow between boards for quick and hygienic drying and storage. Boards are dishwasher safe; case is wipe clean.

6	12	36	72
68.39	66.29	64.19	59.99 4C

* Pricing subject to change. Please confirm with sales rep.



JJ009

NEW

Joseph Joseph® Chop2Pot™ Bamboo Fold Cut Board

Crafted of Bamboo and features an innovative folding design for easy food transfer. Textured, knife-friendly cutting surface and non-slip feet. Hand wash only and wipe dry – do not soak.

9	18	36	72
37.89	36.66	35.44	32.99 4C

* Pricing subject to change. Please confirm with sales rep.

Joseph
Joseph



JJ003

Joseph Joseph® Milltop™ Wood Salt Mill

NEW

JJ004

Joseph Joseph® Milltop™ Wood Pepper Mill

Simple twist base to grind and inverted design helps stay mess-free. Natural Beech wood housing with Ceramic grinding mechanism. Adjustable grinding size. Easy to refill. Wipe clean.

6	12	36	72	
43.49	42.12	40.74	37.99	4C

* Pricing subject to change. Please confirm with sales rep.



HW56

Rechargeable Salt or Pepper Spice Grinder

Power button and gravity activated, simply turn upside down for fresh ground seasoning. Plastic housing with Stainless Steel accent. Adjustable grinder knob. Refillable container holds 2.9oz / 85ml.

12	25	50	100	
28.69	27.77	26.84	24.99	4C

* Pricing subject to change. Please confirm with sales rep.



Joseph
Joseph

JJ019

Joseph Joseph® BarStar 3-in-1 Gray Corkscrew

Easy-open and space-saving design features 3 bottle-opening tools: corkscrew, bottle-cap opener, and removable foil cutter. Wipe clean.

12	25	50	100	
21.79	21.09	20.39	18.99	4C

* Pricing subject to change. Please confirm with sales rep.

IMPORTANT NOTE: The pricing reflected in this brochure is intended as a REFERENCE TOOL ONLY. Please refer to sales rep to confirm pricing, decoration methods, product info and PROP 65 info. | SET-UP: TruColor/Laser Engraving: \$60.00(G)/location. Pad Print: \$60.00(G) color/location. RUN CHARGES: TruColor: 1 location (full color) std. imprint area included. Each add'l location: \$0.50(G)/piece. Pad Print: 1st std. color/location included. Each add'l color/location \$0.50(G)/piece. Laser Engraving: 1st location included. Each add'l location \$1.20(G)/piece.



HW57

Infrared Cooking Thermometer

Fast infrared technology provides surface temperature measurement; temp range: -22F to 662F / -30C to 350C. Foldable probe reads internal food temperature measurement; temp range: -22F to 572F / -30C to 300C. Waterproof. Batteries included.

12	25	50	100
26.39	25.54	24.69	22.99 4C

* Pricing subject to change. Please confirm with sales rep.

Joseph
Joseph



JJ021

NEW

Joseph Joseph® Disc Easy-clean Gray Pizza Cutter

Sharp wheel for effortless cutting. Removable Stainless Steel blade and reversible Silicone blade guard grip for safe storage. Dishwasher safe.

12	25	50	100
21.79	21.09	20.39	18.99 4C

* Pricing subject to change. Please confirm with sales rep.



Joseph
Joseph

JJ023

NEW

Joseph Joseph® Elevate™ Gray Ice-cream Scoop

Zinc alloy head, weighted handle, and integrated tool rest. Easy-release trigger ensures frustration-free scooping and serving. Hand wash only.

12	25	50	100
21.79	21.09	20.39	18.99 4C

* Pricing subject to change. Please confirm with sales rep.



Joseph
Joseph

JJ012

NEW

Joseph Joseph® Presto™ Hygienic Soap Dispenser

Large easy-push pump head, ideal for optimum hygiene. Transparent window for easy-see refill level, suitable for all types of liquid hand soap, and non-slip base. Do not overfill.

24	48	96	244
21.79	21.09	20.39	18.99 4C

* Pricing subject to change. Please confirm with sales rep.



NEW JJ017

Joseph Joseph® Multi-Prep™ 4-pc Grater & Slicer

Four interchangeable blades: chopper, grater, slicer, and julienne cutter and container base collect food for easy preparation. Stacks neatly for compact storage. Safety features include separate finger guard and non-slip base. Not microwave safe. Hand wash only.

6	12	36	72	
50.39	48.79	47.19	43.99	4C

** Pricing subject to change. Please confirm with sales rep.*

**Joseph
Joseph®**



IMPORTANT NOTE: The pricing reflected in this brochure is intended as a REFERENCE TOOL ONLY. Please refer to sales rep to confirm pricing, decoration methods, product info and PROP 65 info. | SET-UP: Laser Engraving: \$60.00(G)/location. RUN CHARGES: Laser Engraving: 1st location included. Each add'l location \$1.20(G)/piece.



NEW JJ001

Joseph Joseph® Elevate™ Fusion Utensil Set

Weighted Steel handles and integrated tool rests. Set includes solid turner, ladle, slotted spoon, precision tongs, large tongs, and compact storage stand. Suitable for non-stick cookware. Utensils are dishwasher safe, storage stand is wipe clean.

3	12	36	72
84.39	82.04	79.69	74.99 4C

* Pricing subject to change. Please confirm with sales rep.



NEW

JJ011

Joseph Joseph® Extend™ SS Expandable Dish Drainer

Stainless-steel finish dish drainer extends to twice its size as needed. Features non-scratch materials, movable drain spout, a moveable cutlery drawer and raised ribs that help efficiently dry dishes. Dismantles for easy cleaning. Expands fully to 14" W x 6.5" H x 20.25" D.

4	12	36	72
78.09	75.82	73.54	68.99 4C

* Pricing subject to change. Please confirm with sales rep.

LC103

Lodge® 12" Cast Iron Skillet

Pre-seasoned with 100% natural vegetable oil and ready for use. Unparalleled heat retention and even heating. Use in the oven, on the stove, on the grill, or over a campfire. Great for induction cooktops. Interior diameter cooking surface measures 10". Made in the USA.

12	25	50	100
70.69	68.52	66.34	61.99 4C

* Pricing subject to change. Please confirm with sales rep.



IMPORTANT NOTE: The pricing reflected in this brochure is intended as a REFERENCE TOOL ONLY. Please refer to sales rep to confirm pricing, decoration methods, product info and PROP 65 info. | SET-UP: Laser Engraving: \$60.00(G)/location. RUN CHARGES: Laser Engraving: 1st location included. Each add'l location \$1.20(G)/piece. Lodge styles LC150 accessories sold BLANK with no available decoration options.



LCI01

Lodge® 8" Cast Iron Skillet

Pre-seasoned with 100% natural vegetable oil and ready for use. Unparalleled heat retention and even heating. Use in the oven, on the stove, on the grill, or over a campfire. Great for induction cooktops. Interior diameter cooking surface measures 6.25". Made in the USA.

12	25	50	100	
45.89	44.42	42.94	39.99	4C

* Pricing subject to change. Please confirm with sales rep.



LCI02

Lodge® 10.25" Cast Iron Skillet

Pre-seasoned with 100% natural vegetable oil and ready for use. Unparalleled heat retention and even heating. Use in the oven, on the stove, on the grill, or over a campfire. Great for induction cooktops. Interior diameter cooking surface measures 8.5". Made in the USA.

12	25	50	100	
57.29	55.47	53.64	49.99	4C

* Pricing subject to change. Please confirm with sales rep.



OMC05

Old Mountain 10.5" Cast Iron Skillet

Pre-seasoned Cast Iron skillet designed for use on all cooking surfaces including grills and campfires. Features 2 pour spouts, an assist handle, and a 7.5" diameter interior cooking surface.

12	25	50	100	
44.69	43.27	41.84	38.99	4C

* Pricing subject to change. Please confirm with sales rep.



OMC04

Old Mountain 8" Cast Iron Skillet

Pre-seasoned Cast Iron skillet designed for use on all cooking surfaces including grills and campfires. Features 2 pour spouts and a 5.75" diameter interior cooking surface.

12	25	50	100	
30.99	29.99	28.99	26.99	4C

* Pricing subject to change. Please confirm with sales rep.

You might also like

LCI50

LCI56

LCI07

LCI28

LCI22



Lodge® 10.25" Cast Iron Starter Gift Set
as low as \$69.99 (C)



Lodge® 10.25" and 5" Cast Iron Skillets Gift Set
as low as \$78.99 (C)



Lodge® 5" Cast Iron Skillet
as low as \$22.99 (C)



Lodge® 15" Seasoned Cast Iron Pizza Pan
as low as \$82.99 (C)



Lodge® 5 Qt Cast Iron Double Dutch Oven
as low as \$109.99 (C)



JJ006

NEW

Joseph Joseph® Elevate™ Green Knives Carousel Set

Japanese Stainless Steel construction with weighted handles and integrated knife rests. Set includes 8" bread knife, 6.5" chef's knife, 5.5" santoku knife, 4.5" serrated knife, 3.5" paring knife and rotating knife block. Knives are hand wash recommended; carousel is wipe clean.

3	12	36	72
117.69	114.52	111.34	104.99 4C

* Pricing subject to change. Please confirm with sales rep.

ONEIDA®



LON01

Oneida® 14 Piece Knife Set with Built-in Sharpener

Quality Stainless Steel Blades. Set includes 8" chef's knife, 8" bread knife, 7" Santoku knife, 5" utility knife, (6) 4.5" steak knives, 3.5" paring knife, kitchen shears, and a wood block with built-in sharpener. Hand wash only. 25-year limited warranty.

3	12	36	72
236.39	231.04	225.69	214.99 4C

* Pricing subject to change. Please confirm with sales rep.

ONEIDA®



LON02

Oneida® Preferred 18 Piece Cutlery Set

Quality Stainless Steel construction with peened texture on comfort handles. Set includes 8" chef's knife, 8" bread knife, 8" carving knife, 7" Santoku knife, 6" chef's knife, 5" utility knife, (6) 4.5" steak knives, 3" paring knife, kitchen shears, honing steel, and a Hardwood knife block. Hand wash recommended. 25-year limited warranty.

3	12	36	72
219.89	214.92	209.94	199.99 4C

* Pricing subject to change. Please confirm with sales rep.

NIAGARA CUTLERY



KS58

Niagara Cutlery™ Rosewood 6-Piece Steak Knife Set

Gift set features triple riveted heavy duty steak knives with Rosewood handles and Stainless Steel blades (blade imprint optional).

9	18	36	72
57.29	55.47	53.64	49.99 4C

* Pricing subject to change. Please confirm with sales rep.



KS08

Manchurian Ash 6-Piece Steak Knife Slim Case Set

Stainless Steel blades with triple riveted Manchurian Ash handles. Oversized Steakhouse design. Imprint standard on center of case (blade imprint optional).

9	18	36	72
49.19	47.64	46.09	42.99 4C

* Pricing subject to change. Please confirm with sales rep.



BBQ5

5 Piece Deluxe BBQ Set

Elegant metal carrying case with quality corner finishing and hinging. Set includes Stainless Steel spatula (with built in serrated blade and bottle opener), tongs, fork, cutting knife and sauce brush.

6	12	36	72
76.99	74.74	72.49	67.99 4C

* Pricing subject to change. Please confirm with sales rep.



BBQ42

Blaze 5 Piece BBQ Set

Elegant metal carrying case with quality corner finishing and hinging. Includes a spatula, tongs, cutting knife, fork and Silicone sauce brush.

12	25	50	100
57.29	55.47	53.64	49.99 4C

* Pricing subject to change. Please confirm with sales rep.



BBQ4

24 Piece Deluxe BBQ Set

Elegant metal carrying case with quality corner finishing and hinging. Set includes Stainless Steel spatula (with built in serrated blade and bottle opener), fork, sauce brush, tongs, cutting knife, grill cleaner, 6 steak knives, 6 forks, 4 BBQ skewers and seasoning shakers.

6	12	36	72
112.49	109.37	106.24	99.99 4C

* Pricing subject to change. Please confirm with sales rep.

IMPORTANT NOTE: The pricing reflected in this brochure is intended as a REFERENCE TOOL ONLY. Please refer to sales rep to confirm pricing, decoration methods, product info and PROP 65 info. | SET-UP: TruColor/Laser Engraving/Digital Laminated Panel: \$60.00(G)/location. Pad Print/Silkscreen: \$60.00(G) color/location. RUN CHARGES: TruColor: 1 location (full color) std. imprint area included. Each add'l location: \$0.50(G)/piece. Pad Print/Silkscreen: 1st std. color/location included. Each add'l color/location \$0.50(G)/piece. Laser Engraving/Digital Laminated Panel: 1st location included. Each add'l location \$1.20(G)/piece.



BBQ25

5 Piece Bamboo BBQ Set

A sleek Bamboo set stored in a 600D Nylon zippered case with adjustable shoulder strap. Set includes Stainless Steel spatula, fork, tongs, Silicone basting brush, and grill brush with comfort grip Bamboo handles.

12	25	50	100
51.49	49.87	48.24	44.99 4C

* Pricing subject to change. Please confirm with sales rep.



BBQ28

5 Piece BBQ Set (Bamboo) in Roll-Up Case

A sleek Bamboo set stored in a 600D Nylon roll-up case. Set includes Stainless Steel spatula, fork, tongs, Silicone basting brush, and grill brush with comfort grip Bamboo handles.

12	25	50	100
45.79	44.34	42.89	39.99 4C

* Pricing subject to change. Please confirm with sales rep.



HW34

15" Silicone Oven Mitt

Designed with an extra long length (14.75") which makes it ideal for grilling. Heat-resistant Silicone exterior with Cotton insert. Sold individually, not as a pair.

24	48	96	244
20.59	19.94	19.29	17.99 4C

* Pricing subject to change. Please confirm with sales rep.





FL215

NEW

3W Desk Glow Lantern

3W lantern constructed with Metal, Acrylic (PMMA), and Bamboo top. Adjustable brightness level and top handle with non-slip bottom. Includes a USB-C charging cable. (7"H x 4.5"W x 4"D)

9	18	36	72
40.19	38.89	37.59	34.99 4C

* Pricing subject to change. Please confirm with sales rep.



FL161

USB Rechargeable Triple Output LED

800 lumens (high). High powered rechargeable flashlight features a push/pull head for an adjustable beam. 5 modes (high, medium, low, strobe and S.O.S). Includes USB recharging cable and 1 rechargeable battery. (1.375"H x 1.375"W x 6.75"D)

12	25	50	100
33.29	32.22	31.14	28.99 4C

* Pricing subject to change. Please confirm with sales rep.



FL203

Rechargeable 15W LED Faro Flashlight

1200 lumens (high). High powered rechargeable flashlight features a 15W XHP50 LED bulb. 5 modes (high, medium, low, strobe, S.O.S). Blue LED light indicates battery level. Includes built-in rechargeable battery, Micro USB charging cable, hand strap, and magnetic giftbox. (6.625"H x 1.625"W x 1.625"D)

12	25	50	100
34.39	33.29	32.19	29.99 4C

* Pricing subject to change. Please confirm with sales rep.



FL213

NEW

Rechargeable 15W White Laser LED Flashlight

1500 lumens (high). High powered rechargeable flashlight features a 15W White LED bulb. 5 modes (high, medium, low, strobe, S.O.S). LED light indicates battery level. Includes rechargeable battery, USB-C charging cable, hand strap, and magnetic giftbox. (1.5"H x 6.375"W x 1.5"D)

12	25	50	100
35.59	34.44	33.29	30.99 4C

* Pricing subject to change. Please confirm with sales rep.



FL214

NEW

Rechargeable 20W White Laser LED Flashlight

2000 lumens (high). High powered rechargeable flashlight features a 20W White LED bulb. 5 modes (high, medium, low, strobe, S.O.S). LED light indicates battery level. Includes rechargeable battery, USB-C charging cable, hand strap, and magnetic giftbox. (1.625"H x 6.375"W x 1.625"D)

12	25	50	100
40.19	38.89	37.59	34.99 4C

* Pricing subject to change. Please confirm with sales rep.



NEW

FL212

Rechargeable 15W P50/COB Flashlight

800 lumens (front). Function button switches between 3 modes of 15W P50 bulb front light: high, low, and strobe. Double-click function button switches between 4 modes of 3W COB barrel light: high, low, constant red, and red strobe. Features an adjustable light beam by push/pull focusing action. Approx 4 ½ hours of run time (high); 6 hours (low); 7 hours (barrel). Includes 1 x 18650 rechargeable battery, USB charging cable, and manual. (1.5"H x 6.75"W x 1.5"D)

24	48	96	244	
22.89	22.16	21.44	19.99	4C

* Pricing subject to change. Please confirm with sales rep.





FL211

Rechargeable 10W P50/COB Flashlight

500 lumens (front). Rechargeable flashlight features 10W P50 and 3W COB bulbs. 4 modes: high (front), low (front), strobe (front), COB (barrel). Includes a rechargeable battery and USB-C charging cable. (1.375"H x 5.5"W x 1.375"D)

24	48	96	244
18.29	17.71	17.14	15.99 4C

* Pricing subject to change. Please confirm with sales rep.

NEW



FL207

Urban Peak® Rechargeable 20W Parallel Flashlight

2000 lumens (high). Aluminum body flashlight runs from 4-10 hours on a charge (USB Type C). Bulb type: XHP50. Five modes: high, medium, low, strobe and S.O.S. Includes battery, charging cable, hand strap in a magnetic gift box. (Flashlight 1.5"H x 1.5"W x 6.5"D)

12	25	50	100
40.19	38.89	37.59	34.99 4C

* Pricing subject to change. Please confirm with sales rep.





FL91

Trion Dual Output LED (CREE® XP-E R2 3 Watt)

207 lumens (high). Features a rotary action focus ring and carrying clip. 3 modes (high, low, strobe). Includes 3-AAA batteries. (1.375"H x 1.375"W x 5.25"D)

24	48	96	244
20.59	19.94	19.29	17.99 4C

* Pricing subject to change. Please confirm with sales rep.



FL158

Pulse 5 Watt Dual Output LED (CREE® XP-G2 R5)

250 lumens (high). Constructed of Aluminum. 3 modes (high, low, and strobe). Includes 3-AAA batteries and lanyard hole. (1.5"H x 1.5"W x 5.25"D)

18	36	72	144
22.89	22.16	21.44	19.99 4C

* Pricing subject to change. Please confirm with sales rep.



FL201

Rechargeable 3W Aluminum Focus Flashlight

120 lumens (high). Constructed of Aluminum. 5 modes (high, medium, low, strobe and S.O.S). Features magnetic base and a push/pull head for an adjustable beam. Includes a rechargeable battery, USB charging cable and adjustable clip. (5.75"H x 1"W x 1.25"D)

18	36	72	144
24.59	23.82	23.04	21.49 4C

* Pricing subject to change. Please confirm with sales rep.



FL208

Urban Peak® Rechargeable 20W Crosshatch Flashlight

2000 lumens (high). Aluminum body flashlight runs from 6-20 hours on a charge (USB Type C). Bulb type: XHP50. Five modes: high, medium, low, strobe and S.O.S. Includes battery, charging cable, hand strap in a magnetic gift box. (Flashlight 1.625"H x 1.625"W x 6.75"D)

12	25	50	100
43.59	42.19	40.79	37.99 4C

* Pricing subject to change. Please confirm with sales rep.





FL205

NEW



Rechargeable Urban Peak® 20W Tactical Flashlight

1600 lumens (high). High powered rechargeable flashlight features a push/pull head for an adjustable beam. 5 modes (high, medium, low, strobe and S.O.S). Bulb type: P70 / 20W. Includes 18650 battery & adapter, Type C cable, and hand strap. Packaged in a magnetic gift box. (Flashlight 1.625"H x 1.625"W x 7"D)

12	25	50	100	
37.89	36.66	35.44	32.99	4C

* Pricing subject to change. Please confirm with sales rep.



FL57

10" Roadside Safety Light

240 lumens (side). Aluminum roadside flashlight with CREE® XPE front lights, COB side lights with red flashing mode. Strong bottom magnet and hand strap. Includes 3-AAA batteries. (1.5"H x 1.5"W x 9.75"D)

18	36	72	144
26.39	25.54	24.69	22.99 4C

* Pricing subject to change. Please confirm with sales rep.



FL182

5-in-1 Assist Rescue Flashlight (LED / COB)

180 lumens (high). Aluminum body 5-in-1 emergency tool features a seatbelt cutter, window hammer, and 3 flashlight modes (high, low, red flashing). Includes 3-AAA batteries. (1.625"H x 1.625"W x 6.5"D)

36	72	144	250
17.79	17.22	16.64	15.49 4C

* Pricing subject to change. Please confirm with sales rep.



FL206

Rechargeable Urban Peak® 20W/COB Flashlight

1200 lumens (high). High powered rechargeable flashlight features a push/pull head for an adjustable beam. Front light 20W has 3 modes (high, low, strobe). Side barrel COB has 4 modes: high, low, red, and strobe red. Includes two 18650 batteries, and two plastic battery adapters. (2.375"H x 2.375"W x 10.25"D)

12	25	50	100
45.89	44.42	42.94	39.99 4C

* Pricing subject to change. Please confirm with sales rep.



FL180

Task LED Pocket Flashlight

200 lumens (high). Constructed of Aluminum. 5 modes (high, medium, low, strobe and S.O.S). Features a push/pull head for an adjustable beam. Includes 3-AAA batteries and adjustable clip. (1.25"H x 1.125"W x 4.5"D)

36	72	144	250
13.69	13.27	12.84	11.99 4C

* Pricing subject to change. Please confirm with sales rep.



FL181

Dyad LED / COB Flashlight

300 lumens (front). Features a push/pull head for an adjustable beam and a concealed COB barrel light. 4 modes: high (front), low (front), high (barrel), high (front & barrel). Includes 3-AAA batteries. (1.5"H x 1.5"W x 6"D)

36	72	144	250
15.99	15.49	14.99	13.99 4C

* Pricing subject to change. Please confirm with sales rep.



FL195

3W Square Barrel LED / COB Worklight

200 lumens (barrel). Aluminum housing with a magnetic base. 3 modes: front (LED), barrel (COB), and barrel (white COB flashing). Includes 3-AA batteries. (8"H x 0.938"W x 0.938"D)

36	72	144	250
17.19	16.64	16.09	14.99 4C

* Pricing subject to change. Please confirm with sales rep.



FL202

Rechargeable 3W COB/UV-A LED Pen Worklight

150 lumens (high). Rechargeable Aluminum flashlight featuring a combination of COB and UV-A LED bulbs. 3 modes (high, low, UV-A). Includes built-in rechargeable battery and Type-C USB charging cable. (6"H x 0.625"W x 0.75"D)

24	48	96	244
22.89	22.16	21.44	19.99 4C

* Pricing subject to change. Please confirm with sales rep.



FL204

Rechargeable 20W LED Vega Flashlight

NEW

2000 lumens (high). High powered rechargeable flashlight features a 20W XHP50 LED bulb. 5 modes (high, medium, low, strobe, S.O.S.). Blue LED light indicates battery level. Includes built-in rechargeable battery, Type-C USB charging cable, hand strap, and magnetic giftbox. (6.5"H x 2.25"W x 2.25"D)

12	25	50	100
38.99	37.74	36.49	33.99 4C

* Pricing subject to change. Please confirm with sales rep.

IMPORTANT NOTE: The pricing reflected in this brochure is intended as a REFERENCE TOOL ONLY. Please refer to sales rep to confirm pricing, decoration methods, product info and PROP 65 info. | SET-UP: TruColor/Laser Engraving/Digital Laminate Panel: \$60.00(G)/location. Pad Print: \$60.00(G) color/location. RUN CHARGES: TruColor: 1 location (full color) std. imprint area included. Each add'l location: \$0.50(G)/piece. Each add'l square inch beyond std. area \$0.24(G) per piece/location. Pad Print: 1st std. color/location included. Each add'l color/location \$0.50(G)/piece. Laser Engraving/Digital Laminate Panel: 1st location included. Each add'l location \$1.20(G)/piece.



FL160

Pivot Roadside Utility Light

180 lumens (side). Features a strong magnetic base with a 90 degree rotating head. CREE® XP-E2 R2 front light with an adjustable push/pull focus and a COB side light. Includes 4-AAA batteries. (1.875"H x 1.875"W x 7.125"D)

12	25	50	100	
33.29	32.22	31.14	28.99	4C

* Pricing subject to change. Please confirm with sales rep.



FL219

NEW

Rechargeable 10W Flex Filament Lantern/Flashlight

300 lumens (front). Rechargeable flashlight features 10W White LED bulb and 3W flexible filament. 5 modes: white constant (front), white strobe (front), warm (barrel), white (barrel), warm-white (barrel). Includes a rechargeable battery and USB-C charging cable. (7"H x 1.5"W x 1.5"D)

24	48	96	244	
17.19	16.64	16.09	14.99	4C

* Pricing subject to change. Please confirm with sales rep.



FL172

Pivot Stand Worklight

400 lumens (high). Designed with a kickstand that rotates 180 degrees into a handle. 2 modes (high, low). Includes 4-AA batteries. (5"H x 6.75"W x 1.875"D)

24	48	96	244	
20.59	19.94	19.29	17.99	4C

* Pricing subject to change. Please confirm with sales rep.



FL183

Channel LED / COB Rechargeable Flashlight

400 lumens (barrel). Features a push/pull head for an adjustable beam and a COB barrel light. 4 modes: high (front), low (front), high (barrel) and high (front & barrel). Includes built-in rechargeable battery, a USB charging cable and adjustable clip. (1.375"H x 1.375"W x 5.375"D)

24	48	96	244	
21.79	21.09	20.39	18.99	4C

* Pricing subject to change. Please confirm with sales rep.



NEW

FL220



Rechargeable 6W Flex Band Headlight

600 lumens. Throws light up to 100m. Black ABS plastic housing with an adjustable double banded Elastic head strap. Adjustable tilt, 4 light modes (high, medium, low, eco) offered in 3 colors (warm, blue and green), and 2 emergency red light modes (constant and strobe). Includes Type-C USB charging cable.

12	25	50	100	
21.79	21.09	20.39	18.99	40

* Pricing subject to change. Please confirm with sales rep.



IMPORTANT NOTE: The pricing reflected in this brochure is intended as a REFERENCE TOOL ONLY. Please refer to sales rep to confirm pricing, decoration methods, product info and PROP 65 info. | SET-UP: TruColor/Laser Engraving: \$60.00/(G)/location. Pad Print: \$60.00/(G) color/location. RUN CHARGES: TruColor: 1 location (full color) std. imprint area included. Each add'l location: \$0.50/(G)/piece. Pad Print: 1st std. color/location included. Each add'l color/location \$0.50/(G)/piece. Laser Engraving: 1st location included. Each add'l location \$1.20/(G)/piece.



FL176

Wave Sensor LED Rechargeable Headlight

120 lumens. Adjustable angle ABS black shell with adjustable elastic head strap. Left button with blue light indicator activates sensor function for easy, no touch on/off mode. Right button activates 3 manual push modes (high, low and flashing). Includes USB charging cable and 1000D Water Repellent Bag.

24	48	96	244
22.89	22.16	21.44	19.99 4C

* Pricing subject to change. Please confirm with sales rep.



FL209

NEW

Hybrid Power COB / XPG Headlight

600 lumens. Adjustable angle and black ABS plastic shell. 6 light modes (dual spotlight and floodlight, floodlight low, floodlight high, spotlight low, spotlight medium, and spotlight high) rotary side powers emergency red light modes. Rechargeable battery pack (included) or 3 x AAA batteries.

12	25	50	100
32.09	31.07	30.04	27.99 4C

* Pricing subject to change. Please confirm with sales rep.



FL196

Rechargeable Agile LED / COB Headlamp

230 lumens (LED). Adjustable tilt Aluminum and ABS shell with adjustable Elastic head strap. Left button activates 2 LED spotlight modes (high and low). Right button activates 2 COB floodlight modes (white and red). Includes micro USB charging cable.

24	48	96	244
22.89	22.16	21.44	19.99 4C

* Pricing subject to change. Please confirm with sales rep.



FL151

Venture Headlamp (CREE® XT-E)

180 lumens (high). Adjustable tilt housing with a CREE® XT-E bulb. Features 3 modes (high, low and strobe). Two red LED bulbs with continuous or flashlight modes. Comfortable padded headband and adjustable strap. Includes 3-AAA batteries.

24	48	96	244
17.79	17.22	16.64	15.49 4C

* Pricing subject to change. Please confirm with sales rep.



NEW

FL217



Rechargeable 8W COB High Stand Worklight

1000 lumens. Features 4 light modes (high, low, SOS, strobe), foldaway stand, power bank function, comfort-grip padded handle, and magnetic base. Includes built-in rechargeable battery and a Type-C USB charging cable. (8.75"H x 6"W x 6.5"D)



12	25	50	100	
24.09	23.32	22.54	20.99	4C

* Pricing subject to change. Please confirm with sales rep.



IMPORTANT NOTE: The pricing reflected in this brochure is intended as a REFERENCE TOOL ONLY. Please refer to sales rep to confirm pricing, decoration methods, product info and PROP 65 info. | SET-UP: TruColor/Digital Laminate Panel: \$60.00(G)/location. Pad Print: \$60.00(G) color/location. RUN CHARGES: TruColor: 1 location (full color) std. imprint area included. Each add'l location: \$0.50(G)/piece. Pad Print: 1st std. color/location included. Each add'l color/location \$0.50(G)/piece. Digital Laminate Panel: 1st location included. Each add'l location \$1.20(G)/piece.



FL216

NEW

Rechargeable 10W COB/LED Trio Ready Worklight

1000 lumens. 4 main light modes (warm, white, yellow, red), auxiliary button switches light modes (warm and red strobe), pivoting stand, built-in carabiner, tripod ready, power bank function, and magnetic base. Includes built-in rechargeable battery and a Type-C USB charging cable. (3.875"H x 3.625"W x 1.25"D)

12	25	50	100
24.09	23.32	22.54	20.99 4C

* Pricing subject to change. Please confirm with sales rep.



FL218

NEW

Rechargeable 20W COB/LED Adjustable Stand Worklight

2000 lumens. Features 4 main light modes (warm, white, yellow, red strobe), 4 perimeter red light modes (slow strobe, running, surround, constant), adjustable tilt stand/handle, power bank function, and magnetic base. Includes built-in rechargeable battery and a Type-C USB charging cable. (4.5"H x 4.5"W x 2"D)

12	25	50	100
29.79	28.84	27.89	25.99 4C

* Pricing subject to change. Please confirm with sales rep.



FL210

NEW

Rechargeable 20W COB Quad Worklight

1400 lumens. 4 light modes (low, med, high, super) and 3 color temperature modes (warm, cool, both). Features a stand that pivots for multiple angles, built-in carabiner, tripod ready, and a magnetic base. Includes built-in rechargeable battery and a USB-C charging cable. (4.25"H x 4.25"W x 1.75"D)

9	18	36	72
36.69	35.52	34.34	31.99 4C

* Pricing subject to change. Please confirm with sales rep.



FL194

Rechargeable Pivot Stand 10W Worklight & Power Bank – 2000 mAh

500 lumens. 3 modes (high, low, and white flashing). Four strong magnets located on back. Features a stand that pivots for multiple angles and hideaway top handle. Blue LED lights indicate battery level. Includes built-in rechargeable battery and micro USB charging cable. (4"H x 5.375"W x 1.75"D)

24	48	96	244
24.09	23.32	22.54	20.99 4C

* Pricing subject to change. Please confirm with sales rep.

FL114



Magnetic LED Worklight

100 lumens (side). 7 position magnetic pivot stand, a pivoting hook, non-slip grip and a 25 lumen flashlight on the top. Includes 3-AA batteries. (8.75"H x 2.25"W x 1.5"D)

24	48	96	244
20.09	19.44	18.79	17.49 40

* Pricing subject to change. Please confirm with sales rep.





FL143



Pocket Worklight (COB)

125 lumens. Compact flashlight with magnet clip housed in a lightweight ABS plastic shell. Includes 3-AAA batteries. (1.25"H x 0.75"W x 6.125"D)

72	144	288	576
7.99	7.74	7.49	6.99 4C

* Pricing subject to change. Please confirm with sales rep.



FL111



Pocket Work Flashlight (10 SMD)

120 lumens. Compact flashlight with magnet clip housed in a lightweight ABS plastic shell. Includes 3-AAA batteries. (1.25"H x 0.75"W x 6.125"D)

50	100	250	500
10.29	9.96	9.64	8.99 4C

* Pricing subject to change. Please confirm with sales rep.



FL189

Clover Style LED/COB Worklight

270 lumens (panels). 3 COB panels and LED flashlight head rotate 90 degrees for directional lighting solutions. Includes 3-AA batteries and a 4L dry bag (BG344). (5.875"H x 2.875"W x 2.875"D)

24	48	96	244
27.49	26.61	25.74	23.99 4C

* Pricing subject to change. Please confirm with sales rep.



FL166



Magnetic Kickstand Worklight (COB)

200 lumens (side). Features a magnetic base, pocket clip and hideaway hook. Includes 3-AAA batteries. (6.875"H x 1.25"W x 1"D)

50	100	250	500
11.39	11.04	10.69	9.99 4C

* Pricing subject to change. Please confirm with sales rep.



TS85

NEW

85 Piece Tool Set

Handy 85 piece tool essentials stored in an organizer case. Set includes a 5M measuring tape, 25mm bit-set (40-piece), screwdriver, 6" long nose plier, 6" diagonal cutting plier, 6" combination plier, 1/4" ratchet handle, 14 piece 1/4" socket set, 8" adjustable wrench, hex key wrench with 8 piece keys, screwdriver handle, 4 piece screwdriver set, knife, 13oz claw hammer, 1 piece bit driver, 1 piece universal shear, 6 piece combination wrench, 4 piece precision screwdriver set, 3" extension bar, and 1 box of assorted screws and nails.

4	12	36	72	
101.79	98.84	95.89	89.99	40

* Pricing subject to change. Please confirm with sales rep.



TS45

Rechargeable 3.6V Screwdriver

Set includes a rechargeable 3.6-volt screwdriver, a 24 piece set of 25mm bits, 1 piece 50mm CRV PH1, and 1 piece 60mm bit holder in a plastic storage case. Features include 6Nm (electric) and 10Nm (manual) maximum torque, approx 3-5 hour recharge time, soft grip handle, LED light, and a USB charging cable.

12	25	50	100	
45.89	44.42	42.94	39.99	4C

* Pricing subject to change. Please confirm with sales rep.



TS34

Deluxe Household Tool Set

Set includes a fastener kit, 6" diagonal pliers, 6" needle-nose pliers, magnetic driver handle, 6" adjustable wrench, 2 driver bit sets, metric and imperial hex key wrenches, hammer, knife, 8" level, 4 precision screwdrivers, PVC tape and an 8" crimping tool with wire cutter.

12	25	50	100	
51.49	49.87	48.24	44.99	4C

* Pricing subject to change. Please confirm with sales rep.



TSB

Tool Set Briefcase

Set includes soft touch needle-nose pliers, slip lock pliers, utility knife, adjustable crescent wrench, hammer, tape measure, scissors, 4 Allen keys, 3 micro screwdrivers, magnetic driver handle, driver bit set and an assortment of plugs, screws and nails.

6	12	36	72	
79.19	76.89	74.59	69.99	4C

* Pricing subject to change. Please confirm with sales rep.



TS24

Tool Set with Bi-Fold Carrying Case

Set includes slip joint pliers, utility knife, 4 precision screwdrivers, magnetic bit drive, 2 bit sets, Allen wrench set, claw hammer, scissors, assorted fastener set and a 12 ft tape measure.

12	25	50	100	
42.39	41.04	39.69	36.99	4C

* Pricing subject to change. Please confirm with sales rep.



EL219

Digital Tire Inflator / Air Pump

Cordless or cord powered 90W tire inflator/air pump with digital display. 5 inflation modes: sport balls, bicycles, motorcycles, motor cars, and a custom mode (150PSI Max pressure). Kit includes a USB-C charging cable, cigarette lighter power cord, air hose, 5 multifunctional air nozzles, travel bag, and user manual.

NEW

6	12	36	72	
57.29	55.47	53.64	49.99	4C

* Pricing subject to change. Please confirm with sales rep.



IMPORTANT NOTE: The pricing reflected in this brochure is intended as a REFERENCE TOOL ONLY. Please refer to sales rep to confirm pricing, decoration methods, product info and PROP 65 info. | SET-UP: TruColor/Digital Laminate Panel: \$60.00(G)/location. Silkscreen: \$60.00(G) color/location. RUN CHARGES: TruColor: 1 location (full color) std. imprint area included. Each add'l location: \$0.50(G)/piece. Silkscreen: 1st std. color/location included. Each add'l color/location \$0.50(G)/piece. Digital Laminate Panel: 1st location included. Each add'l location \$1.20(G)/piece.



TS60

NEW

Deluxe Emergency Car Kit

Soft storage zipper case holds a tow rope, 8G 8ft battery booster, headlight, SOS paper card sign, pair of gloves, Hi-Viz vest, blanket, 3 x AAA batteries, raincoat, first aid materials (5 alcohol pre-pads, 15 adhesive bandages, 2 tape rolls, 2 wound pads, 2 cleaning wipes, 1 triangle bandage), and an instruction book.

6	12	36	72	
45.89	44.42	42.94	39.99	4C

* Pricing subject to change. Please confirm with sales rep.



TS53

NEW

53 Piece Tool Set

Set includes a 5M measuring tape, 25mm bit-set (32-piece), screwdriver, 6" long nose plier, 6" diagonal cutting plier, 8" adjustable wrench, hex key wrench with 8 piece keys (1/16-5/64-3/32-1/8-5/32-3/16-7/32-1/4"), knife, 13oz claw hammer, 1 piece bit driver, 1 piece universal shear, and a 4 piece precision screwdriver set.

4	12	36	72	
76.99	74.74	72.49	67.99	4C

* Pricing subject to change. Please confirm with sales rep.



TS23

Tool Set with Tri-Fold Carrying Case

Home tool essentials stored in a space-saving tri-fold organizer case. Set includes needle-nose pliers, utility knife, adjustable wrench, Phillips & flathead screwdrivers, magnetic drive handle, 2-bit sets, Allen wrench set, ratchet set, 4 precision screwdrivers, level, 2 clamps and 10 ft tape measure.

12	25	50	100	
40.19	38.89	37.59	34.99	4C

* Pricing subject to change. Please confirm with sales rep.



TS58

Foldable Tool Set

Tools are enclosed in a zipper and hook and loop secured Nylon tool bag. Set includes needle-nose pliers, combination pliers, adjustable wrench, hammer, magnetic driver handle, 2-bit sets, Phillips screwdriver, two flat head screwdrivers, 5 combination wrenches, utility knife, Allen wrench set and measuring tape.

6	12	36	72	
66.09	64.06	62.04	57.99	4C

* Pricing subject to change. Please confirm with sales rep.

MT1116

Rugged 16ft Measuring Tape

Durable, high impact casing with Nylon coated tape. Large, easy to read numbers in inches and centimeters. Manual lock, magnetic hook, side clip, and lanyard.

24	48	96	244
15.99	15.49	14.99	13.99 4C

* Pricing subject to change. Please confirm with sales rep.



MT725

Artisan 25' Measuring Tape

Durable 25' Nylon-coated measuring tape features large, easy-to-read numbers, a thumb-lock, a belt clip and a Rubber molded case.

24	48	96	244
21.79	21.09	20.39	18.99 4C

* Pricing subject to change. Please confirm with sales rep.





MK125

NEW

Ryker Multi-Tool

Polished 420 Stainless Steel and black oxidized 420 Stainless Steel trim accent. Tools include pliers, wire cutters, flat screwdriver, Phillips screwdriver, small and large straight blades, saw blade, hook remover, bottle opener, and can opener.

12	25	50	100	
28.69	27.77	26.84	24.99	4C

* Pricing subject to change. Please confirm with sales rep.



MK71

Omni Multi Tool

Features 2 LED lights - one at each end of the unit. Includes pliers with wire cutter and an assortment of accessories coated in Black Oxide finish: clip point knife with liner lock, bottle opener, can opener, belt clip, flathead screwdriver, and Phillips screwdriver.

12	25	50	100	
49.19	47.64	46.09	42.99	4C

* Pricing subject to change. Please confirm with sales rep.



MK116

Protec Multi-Tool

Features a Stainless Steel body with Black Oxide-coated implements. Featuring needle nose pliers, wire cutter, wire stripper, file, bottle opener and can opener, medium flat head screwdriver, awl, knife, saw and hook remover, Phillips screwdriver, and a small flat head screwdriver.

12	25	50	100	
28.69	27.77	26.84	24.99	4C

* Pricing subject to change. Please confirm with sales rep.



MK37

Industrial Multi Tool

Stainless Steel skeletal design. Includes pliers, wire cutters, small/medium/large screwdrivers, Phillips screwdriver, small and large straight blades, saw blade, fish scaler, hook remover, bottle opener, can opener, and nail file.

18	36	72	144	
27.49	26.61	25.74	23.99	4C

* Pricing subject to change. Please confirm with sales rep.



MK124

NEW

Cutler Survival/Rescue Knife

Black oxidized 420 Stainless Steel blade and aluminum handle. Featuring a window breaker, fire starter/flint, spanner/wrench, and bottle opener. Blade length: 3.5", product when closed: 5".

24	48	96	244
18.29	17.71	17.14	15.99 4C

* Pricing subject to change. Please confirm with sales rep.



MK123

NEW

Draft Folding Knife

Black oxidized 420 Stainless Steel construction. Ambidextrous thumb stud and integrated belt clip. Blade length: 3", product when closed: 4".

24	48	96	244
17.19	16.64	16.09	14.99 4C

* Pricing subject to change. Please confirm with sales rep.



WH28

NEW

Honed Folding Knife

Black oxidized 420 Stainless Steel blade with a natural Red Vine Wood handle. Integrated thumb notches and belt clip. Blade length: 3.375", product when closed: 4.5".

24	48	96	244
18.29	17.71	17.14	15.99 4C

* Pricing subject to change. Please confirm with sales rep.



WH27

NEW

Notch Folding Knife

Satin finished 420 Stainless Steel blade with a natural Olive Wood handle. Integrated thumb stud and belt clip. Blade length: 3.5", product when closed: 4.75".

24	48	96	244
18.29	17.71	17.14	15.99 4C

* Pricing subject to change. Please confirm with sales rep.



WH26

NEW

Spire Folding Knife

Black oxidized 420 Stainless Steel blade with a natural Olive Wood handle. Integrated thumb notches and belt clip. Blade length: 3.375", product when closed: 4.5".

24	48	96	244
16.59	16.07	15.54	14.49 4C

* Pricing subject to change. Please confirm with sales rep.



WH25

NEW

Ajax Folding Knife

Black oxidized 420 Stainless Steel blade with a black Pakkawood handle. Integrated thumb notches and belt clip. Blade length: 2.625", product when closed: 3.5".

24	48	96	244
14.79	14.34	13.89	12.99 4C

* Pricing subject to change. Please confirm with sales rep.



WH24

NEW

Lance Folding Knife

Satin finished 420 Stainless Steel blade with a natural Olive Wood handle. Integrated thumb stud and belt clip. Blade length: 2.5", product when closed: 3.5".

24	48	96	244
14.79	14.34	13.89	12.99 4C

* Pricing subject to change. Please confirm with sales rep.



WH23

NEW

Dune Slim Folding Knife

Black oxidized 420 Stainless Steel blade with a natural Rose Wood handle. Ambidextrous thumb studs and belt clip. Blade length: 2.5", product when closed: 3.375".

24	48	96	244
14.29	13.84	13.39	12.49 4C

* Pricing subject to change. Please confirm with sales rep.



MK69

XTR Titanium Rescue Knife

This single handed opening knife includes a glass breaker tip, seatbelt cutter and pocket clip. Blade and handle are constructed of Stainless Steel with a Titanium coating.

24	48	96	244
20.39	19.74	19.09	17.79 4C

* Pricing subject to change. Please confirm with sales rep.



MK119

Apex Pocket Knife

Titanium coated 420 Stainless Steel blade and handle. Ambidextrous thumb studs for easy single-handed opening. Blade length: 4", product when closed: 5".

18	36	72	144
20.59	19.94	19.29	17.99 4C

* Pricing subject to change. Please confirm with sales rep.



MK68

Protec Rescue Knife

This single handed opening knife includes a glass breaker tip, seatbelt cutter and pocket clip. Blade and handle are constructed of Stainless Steel with a Black Oxide coating.

24	48	96	244
18.29	17.71	17.14	15.99 4C

* Pricing subject to change. Please confirm with sales rep.



MK110

Elemental Survival/Rescue Knife

420 Stainless Steel blade and Aluminum handle. Featuring a seatbelt cutter, window hammer, a mini flashlight and fire starting flint. Blade length: 3.625", product when closed: 5".

18	36	72	144
24.59	23.82	23.04	21.49 4C

* Pricing subject to change. Please confirm with sales rep.



MK122

Timber Pocket Knife

Titanium coated 420 Stainless Steel blade with an ergonomically designed Rosewood handle. Blade length: 2.5", product when closed: 3.375".

36	72	144	250
14.79	14.34	13.89	12.99 4C

* Pricing subject to change. Please confirm with sales rep.



MK93

Blaze 2-Tone Camo Knife

Black Oxide coated 420 Stainless Steel blade and Aluminum with Camo coated handle. Blade length: 3", product when closed: 4.5". Lightweight design, includes pocket clip.

24	48	96	244
21.79	21.09	20.39	18.99 4C

* Pricing subject to change. Please confirm with sales rep.



MK121

Wood Ridge Pocket Knife

Titanium coated 420 Stainless Steel blade with an ergonomically designed Rosewood handle. Ambidextrous thumb studs and flipper allow for easy single-handed opening. Blade length: 4", product when closed: 5".

24	48	96	244
21.79	21.09	20.39	18.99 4C

* Pricing subject to change. Please confirm with sales rep.



MK56

Bullseye Camo Knife

Camo exterior with a 420 Stainless Steel blade. Blade length 2.75", product when closed 3.5". Features single handed opening option, several grip points, pocket clip, and Nylon pouch.

24	48	96	244
15.99	15.49	14.99	13.99 4C

* Pricing subject to change. Please confirm with sales rep.



HH25

Whistler™ Ratchet Hard Hat

Meets ANSI/ISEA Z89.1 Type 1 and CSA Z94.1 Type 1 requirements. Lightweight UV stabilized HDPE shell. Multiple features include a 4-Point quick release suspension system, SURE LOCK wheel adjustment system. Made in Canada.

24	48	96	244
26.39	25.54	24.69	22.99 4C

* Pricing subject to change. Please confirm with sales rep.



HH24



Whistler™ Pin Lock Hard Hat

Meets ANSI/ISEA Z89.1 Type 1 and CSA Z94.1 Type 1 requirements. Lightweight UV stabilized HDPE shell. Multiple features include a 4-Point quick release suspension system, pin-lock adjustment system. Made in Canada.

24	48	96	244
22.89	22.16	21.44	19.99 4C

* Pricing subject to change. Please confirm with sales rep.



HH26



Kilimanjaro™ Ratchet Hard Hat

Meets ANSI/ISEA Z89.1 Type 1 and CSA Z94.1 Type 1 requirements. Lightweight UV stabilized HDPE shell. Multiple features include a 4-point quick release suspension and SURE LOCK wheel adjustment system. Made in Canada.

24	48	96	244
28.69	27.77	26.84	24.99 4C

* Pricing subject to change. Please confirm with sales rep.



HH25HV



Whistler™ Ratchet Hi-Vis Hard Hat

Meets ANSI/ISEA Z89.1 Type 1 and CSA Z94.1 Type 1 requirements. Lightweight shell made with UV stabilized HDPE. Features include 4-point quick release suspension and SURE LOCK wheel adjustment. Made in Canada.

24	48	96	244
26.39	25.54	24.69	22.99 4C

* Pricing subject to change. Please confirm with sales rep.



HH18V



Evolution™ 6161 Full Brim Vented Hard Hat

Meets ANSI/ISEA Z89.1 Type 1 requirements. Class C (Conductive) electrical rating. Meets ANSI requirement for Reverse Donning and Lower Temperature. Feature-packed design includes a vented HDPE shell with full brim, Evolution Wheel Ratchet and a 6-point suspension system.

20	50	100	250
50.39	48.79	47.19	43.99 4C

* Pricing subject to change. Please confirm with sales rep.



HH05



Evolution™ Deluxe 6151 Hard Hat

Meets ANSI/ISEA Z89.1 standard for Type I, Class E, and ANSI requirement for Reverse Donning and Lower Temperature. This feature-packed design includes a HDPE shell, 6-point suspension system, and a Evolution Wheel Ratchet.

20	50	100	250	
41.29	39.97	38.64	35.99	4C

* Pricing subject to change. Please confirm with sales rep.



HH05V



Evolution™ Deluxe 6151 Vented Hard Hat

Meets ANSI/ISEA Z89.1 standard for Type I, Class C, and ANSI requirement for Reverse Donning and Lower Temperature. This feature-packed design includes a vented HDPE shell, 6-point suspension system, and an Evolution Wheel Ratchet system.

9	18	36	72	
41.29	39.97	38.64	35.99	4C

* Pricing subject to change. Please confirm with sales rep.



HH24HV



Whistler™ Pin Lock Hi-Vis Hard Hat

Meets ANSI/ISEA Z89.1 Type 1 and CSA Z94.1 Type 1 requirements. Lightweight shell made with UV stabilized HDPE. Features include 4-point quick release suspension and a pin-lock adjustment system. Made in Canada.

24	48	96	244	
22.89	22.16	21.44	19.99	4C

* Pricing subject to change. Please confirm with sales rep.



HH18HV



Evolution™ 6161 Full Brim Hi-Vis Hard Hat

Meets ANSI/ISEA Z89.1 standard for Type I, Class E, and ANSI requirement for Reverse Donning and Lower Temperature. This feature-packed design includes a HDPE shell, 6-point suspension system, and a Evolution Wheel Ratchet.

20	50	100	250	
51.49	49.87	48.24	44.99	4C

* Pricing subject to change. Please confirm with sales rep.

IMPORTANT NOTE: The pricing reflected in this brochure is intended as a REFERENCE TOOL ONLY. Please refer to sales rep to confirm pricing, decoration methods, product info and PROP 65 info. I**Bump Caps sold blank. Please ask sales rep for decoration options and pricing. SET-UP: Pad Print: \$60.00(G) per color/location. RUN CHARGES: Pad Print: 1st std. color/location included. Each add'l color/ location \$0.50(G)/piece. Embroidery: Please ask sales rep for embroidery availability and pricing.



HH27



Stromboli™ Smooth Dome Ratchet Hard Hat

Meets ANSI/ISEA Z89.1 Type II and CSA Z94.1 Type II requirements. Lightweight UV stabilized ABS/Polycarbonate shell. Multiple features include a 4-point quick release suspension and SURE LOCK wheel adjustment system. EPS liner for enhanced side, front and rear impact protection. Made in Canada.

12	25	50	100	
96.09	93.31	90.54	84.99	4C

* Pricing subject to change. Please confirm with sales rep.



HH28



Mont-Blanc™ Type II Cap Style Hard Hat

Meets ANSI Z89.1 Type II Class E, CSA Z94.1 Type II Class E requirements. Lightweight shell made with High Density Polyethylene (HDPE). Multiple features include a 4-point suspension and SURE LOCK wheel adjustment system. Felt-lined foam sweatband. EPS liner for enhanced side, front and rear impact protection. Made in Canada.

24	48	96	244	
62.69	60.77	58.84	54.99	4C

* Pricing subject to change. Please confirm with sales rep.



HH11B



2.75" HardCap A1™ Bump Cap

Inner High-Density Polyethylene (HDPE) protective liner offers 360 degree protection. A sporty lightweight baseball cap design that has a machine-washable outer cap. Includes a Terry Cloth sweatband for added comfort and absorption. Unique angled adjuster slides on an elastic strip for a quick, secure fit.

6	12	36	72	
56.09	54.31	52.54	48.99	4C BLANK

* Pricing subject to change. Please confirm with sales rep.



HH14



Micro 1" HardCap A1™ Bump Cap

Designed for work spaces that have low head clearance or low hanging objects. Features include an inner high-density Polyethylene protective liner that offers 360-degree protection with extra holes in liner for ventilation. Adjuster slides on an elastic strip for secure fit. Machine washable outer cap.

12	25	50	100	
56.09	54.31	52.54	48.99	4C BLANK

* Pricing subject to change. Please confirm with sales rep.



WG18

NEW

Synthetic Leather Palm & Fingertip Gloves

Available in L-XL. Features a black soft synthetic Leather material with reinforced fingers and thumb crotch for added protection, comfort, durability, and an Elastic cuff with a hook-and-loop secured closure and pull-on loops.

24	48	96	244
18.29	17.71	17.14	15.99 4C

* Pricing subject to change. Please confirm with sales rep.



WG19

NEW

Touchscreen Tips & Synthetic Leather Palm Gloves

Available in L-XL. Constructed from synthetic Leather palm with PU reinforcement. Each glove features three PU fingertips for use on touchscreen devices, reinforced fingers and thumb-crotch for extra wear, and an Elastic cuff with a hook-and-loop closure for a secure fit.

24	48	96	244
21.79	21.09	20.39	18.99 4C

* Pricing subject to change. Please confirm with sales rep.



WG06

Anti-Vibration Mechanics Glove

Available in L-XL. Features a black synthetic padded palm for comfort and durability, breathable finger side panels for ventilation, reinforced fingers for added protection, and a Neoprene strap with a hook-and-loop secured cuff closure for a secure fit.

18	36	72	144
25.19	24.39	23.59	21.99 4C

* Pricing subject to change. Please confirm with sales rep.



WG17

Cow Palm Mechanic Glove

Available in L-XL. Cow Grain Leather palms with a textured grip PVC palm panel. Features reinforced fingers and thumb crotch, a Spandex back, and an Elastic cuff with hook-and-loop closure for a secure fit.

18	36	72	144
25.19	24.39	23.59	21.99 4C

* Pricing subject to change. Please confirm with sales rep.

IMPORTANT NOTE: The pricing reflected in this brochure is intended as a REFERENCE TOOL ONLY. Please refer to sales rep to confirm pricing, decoration methods, product info and PROP 65 info. | SET-UP: TruColor: \$60.00(G)/location. Silkscreen: \$60.00(G) color/location. RUN CHARGES: TruColor: 1 location (full color) std. imprint area included. Each add'l location: \$0.50(G)/piece. Silkscreen: 1st std. color/location included. Each add'l color/location \$0.50(G)/piece.

WG01

Mechanics Glove

Available in L-XL. Features breathable finger side panels for ventilation and comfort, reinforced fingers for added protection, and an Elastic cuff with a hook-and-loop closure for a secure fit.

24	48	96	244
19.49	18.87	18.24	16.99 4C

* Pricing subject to change. Please confirm with sales rep.



WL03

Split Leather Glove w/Safety Cuffs

Constructed with A/B Grade shoulder split Cowhide. Featuring Leather knuckle strap and finger tips, and a Cotton-lined palm for extra comfort. Includes an interior Elastic closure.

36	72	144	250
19.89	19.26	16.94	14.49 2ABC

* Pricing subject to change. Please confirm with sales rep.

You might also like

WK02

WG08

WD04

WG07



Seamless Knit Glove

as low as \$11.79 (C)



Synthetic Leather Palm Mechanic Style Glove

as low as \$20.99 (C)



Goatskin Driver's Glove

as low as \$17.99 (C)



Viz™ by Boss®

as low as \$26.99 (C)

Ask your sales rep about hundreds of professional quality safety items





HV06



3 Pocket Solid Breakaway Vest

Sizes M-5XL. ANSI/ISEA 107, Class 2 vest. Constructed from a durable solid Polyester. Features 2" silver reflective tape for better visibility, a hook-and-loop closure, 2 internal lower pockets, and 1 external chest pocket with 1 pen pocket.

18	36	72	144	
24.39	23.62	22.84	21.29	4C

* Pricing subject to change. Please confirm with sales rep.



HV07



3 Pocket Mesh Breakaway Vest

Sizes M-5XL. ANSI/ISEA 107 Class 2 vest. Constructed from a breathable, breakaway Polyester mesh. Features 2" silver reflective tape for better visibility, a hook-and-loop closure, 2 internal lower pockets, and 1 external chest pocket.

18	36	72	144	
24.59	23.82	23.04	21.49	4C

* Pricing subject to change. Please confirm with sales rep.



HV45



Class 3 Value Black Bottom Bomber Jacket

Sizes S-3XL. ANSI 107, Type R Class 3 Bomber jacket. Durable waterproof 300 D. Polyester shell with taped seams and quilted high loft poly-fill insulation. Features 2" silver reflective tape, a zipper closure, hideaway hood, 2 external slash pockets, and 1 upper chest radio pocket.

6	12	36	72	
84.89	82.42	79.94	74.99	4C

* Pricing subject to change. Please confirm with sales rep.



HV01



4 Pocket Value Mesh Vest

Sizes M-5XL. ANSI/ISEA 107 Class 2 vest. Constructed from a breathable Polyester mesh. Features 2" silver reflective tape, a zipper closure, 2 lower external pockets, 2 upper chest pockets, and 4 pen pockets.

18	36	72	144	
21.49	20.82	20.14	18.79	4C

* Pricing subject to change. Please confirm with sales rep.



HV60

Quarter-Zip Pullover Black Bottom Sweatshirt

Sizes M-2XL. ANSI/ISEA 107, Class 3 sweatshirt. Water repellent shell treatment. Pullover with quarter zip stand up collar style lined with 10 oz Polyester Fleece. Features 2" silver reflective tape, front hand warmer pockets, and 1 left zippered chest pocket.

6	12	36	72
79.19	76.89	74.59	69.99 4C

* Pricing subject to change. Please confirm with sales rep.



HV62

Class 2 Short Sleeve Black Bottom Front T-Shirt

Sizes M-2XL. ANSI 107, Type R Class 2 t-shirt. Constructed from durable, lightweight performance-wicking 100% Polyester Birdseye mesh fabric. Features breathable & flexible segmented reflective tape, a black bottom to help hide dirt, and 1 upper left chest pocket.

12	25	50	100
44.69	43.27	41.84	38.99 4C

* Pricing subject to change. Please confirm with sales rep.



HV12

Five Pocket Black Bottom Front Value Mesh Vest

Sizes M-3XL. ANSI 107, Type R Class 2 vest. Constructed from a breathable Polyester mesh. Features 2" silver reflective tape pattern for visibility, a zipper closure, 2 mic tabs with reinforced stitching, 1 internal tablet pocket, 1 chest pocket, 1 chest radio pocket, and 2 external lower pockets.

24	48	96	244
25.79	24.96	24.14	22.49 4C

* Pricing subject to change. Please confirm with sales rep.



HV02

Two Tone 6 Pocket Surveyors Vest

Sizes M-5X. ANSI/ISEA 107 Class 2 vest. Polyester construction. Features include a solid front and breathable mesh back, 2" two tone tape, a zipper closure, and 2 mic tabs with reinforced stitching.

18	36	72	144
29.29	28.36	27.44	25.59 4C

* Pricing subject to change. Please confirm with sales rep.



SG03CL

Zenon Clear Glasses

ANSI-Z87.1+ approved. Anti-fog, scratch-resistant Polycarbonate lens provide 99.9% UVA and UVB protection. Sleek lines with integrated nosepiece. Temple ends soft and durable; rubberized jackets for wearer's comfort. Packaged in a microfiber storage pouch.

48	96	192	384
12.29	11.91	10.49	8.99

* Pricing subject to change. Please confirm with sales rep.



SG01CL

Monteray Clear Glasses

ANSI-Z87.1 & CSA Z94.3 approved. Features include reinforced hinge area, molded nosepiece, scratch resistant, 99.9% UVA and UVB protection, and microfiber storage pouch.

60	120	250	500
10.69	10.35	9.11	7.79

* Pricing subject to change. Please confirm with sales rep.

bolle
SAFETY



SB03GR

Bollé Contour Gray Glasses

ANSI-Z87.1 and CSA Z94.3 approved. High impact, scratch resistant and anti-fog Polycarbonate lens provide 99.9% UVA and UVB protection. High contour dual lenses provide 180° distortion free viewing and excellent optical quality. Packaged in a microfiber storage pouch.

24	48	96	244
29.79	28.84	27.89	25.99

* Pricing subject to change. Please confirm with sales rep.



bouton
OPTICAL

SG18CL

Bouton® Anser Clear Glasses

ANSI-Z87.1 approved. Scratch-resistant Polycarbonate lens provide 99.9% UVA and UVB protection. Bayonet-style wrap-around design with hinged arms. Rubberized temple ends and soft rubber nosepiece provide more comfortable fit. Packaged in a microfiber storage pouch.

48	96	192	384
16.09	15.60	13.74	11.79

* Pricing subject to change. Please confirm with sales rep.



bouton
OPTICAL

SG44GR

Bouton® Captain Gray Glasses

CSA Z94.3 and ANSI-Z87.1 approved. Gray anti-scratch and anti-fog lenses. Lightweight, rimless design made with bayonet temples. Includes a non-slip rubber nose pad. Packaged in a microfiber storage pouch.

36	72	144	250
17.09	16.56	14.58	12.49

* Pricing subject to change. Please confirm with sales rep.



bouton
OPTICAL

SG43GR

Bouton® Wilco Gray Glasses

ANSI-Z87.1 and CSA Z94.3 approved. Scratch-resistant Polycarbonate lens. Lightweight, wrap-around, rimless design with self-adjusting rubber nosepiece and adjustable temple length for added comfort. Packaged in a microfiber storage pouch.

48	96	192	384
16.09	15.60	13.74	11.79 2ABC

* Pricing subject to change. Please confirm with sales rep.



bouton
OPTICAL

SG39CL

Bouton® Recon Clear Glasses

CSA Z94.3 and ANSI-Z87.1 approved. Rimless Polycarbonate clear lenses with an anti-fog coating that provides 99.99% UVA and UVB protection. Flexible bayonet temples contain rubber pads for a secure, non-slip fit. Packaged in a microfiber storage pouch.

36	72	144	250
19.09	18.48	16.25	13.89 2ABC

* Pricing subject to change. Please confirm with sales rep.



bouton
OPTICAL

SG18GR

Bouton® Anser Gray Glasses

ANSI-Z87.1 approved. Scratch-resistant Polycarbonate lens provide 99.9% UVA and UVB protection. Bayonet-style wrap-around design with hinged arms. Rubberized temple ends and soft rubber nosepiece provide more comfortable fit. Packaged in a microfiber storage pouch with a neck cord.

48	96	192	384
16.39	15.89	13.99	11.99 2ABC

* Pricing subject to change. Please confirm with sales rep.



bollé
SAFETY

SB10PD

Bollé Hustler Polarized Glasses

ANSI Z87.1 and CSA Z94.3 approved. Scratch-resistant outside Polycarbonate polarized lens with anti-fog inside treatment. Non-slip rubber nose pads and rubber temple tips ensure superior comfort fit. Packaged in a microfiber storage pouch with an adjustable neck cord.

4	12	36	72
110.29	107.21	104.14	97.99 4C

* Pricing subject to change. Please confirm with sales rep.

You might also like

- SG37CL
- SB02GR
- SB10GR
- SB05CL

Ask your sales rep about hundreds of professional quality safety items



Bouton Zenon Over The Glass Clear Glasses
as low as \$8.99 (2ABC)

Bollé Prism Gray Glasses
as low as \$21.99 (C)

Bollé Hustler Smoke Glasses
as low as \$29.99 (C)

Bollé Solis Clear Glasses
as low as \$29.99 (C)



