



tultex®

Branding

M E R C H A N D I S E

1-800-466-4428

2024 TULTEX COLLECTION

Models are wearing 213 in
Orange and 602 in Yellow



TRIED. TRUE. TRUSTED.

Inspiring creators for 98 years.

Tultex exists to inspire creators. Every style is made with intent and meticulous attention to detail to consistently deliver what matters most to you.

An exclusive brand that redefines the standards of comfort and quality. Tultex, crafted with precision and care in a single factory from spinning to the finished garment, ensures unparalleled consistency across six collections. From Fine Jersey and Poly Rich to Premium, Combed and Ring-Spun Cotton, Tultex brings forth a plethora of options that resonate with every individual's unique style.

Feel the difference when you slip into a collection of USMCA Certified & 100% USA grown cotton tees that are softer, smoother, and come in a variety of colors. Shop the perfect tees for all industries – big, small, retail-ready and cost-conscious.

With 40+ styles and 50+ colorways, Tultex caters to all with a diverse range including unisex, women's, and youth styles. From classic T-shirts to cozy fleece, trendy tank tops to polished polos, and stylish raglans to timeless ringers.

To know Tultex is to love Tultex.

Markets that embrace Tultex span the spectrum, from concert merch in the music and entertainment industries to lifestyle brands, boutiques, retail chains, schools, teams, clubs, corporate entities, resorts, and beyond. Our garments effortlessly become part of your everyday life, transcending occasions and settings.



Retail Fit



Tear Away
Label



USMCA
Certified



USA Grown
Premium Cotton

Model is wearing 245
in White/Royal



Models are wearing 320 in
Neo Mint and 290 in Cassis



COMBED COTTON

COMBED COTTON CRAFTED WITH CARE

Singles: The Key to Cloud-Like Softness

At the heart of Tultex's allure lies its commitment to providing the highest singles in the industry, elevating your garment experience to new heights. What are singles? A measure of yarn diameter that sets the tone for unrivaled comfort. The fibers twisted in an intricate dance – the higher the twists, the finer the yarn. It's not just a number; it's a promise of softer.

Ring-Spun Magic: Strength Meets Softness

Imagine a rope of cotton fibers repeatedly twisted and thinned. The weave becomes finer and tighter revealing the shorter cotton hairs, resulting in a yarn that's not just strong but exceptionally soft with a flatter, smoother surface that is ideal for printing.

Combed Cotton Elegance: Impeccable Canvas

Enter Combed Cotton, where impurities in the cotton are combed out and short fibers vanish, leaving a perfect harmony of long ones. The outcome? A canvas that welcomes your prints with crisp, clean perfection.



Models are wearing 602 in White & Kelly and 602CVC in Heather Grey & Heather Black

INTRODUCING NEW 36 SINGLES

NEW 602 & 602CVC COMBED COTTON AND COMBED CVC T-SHIRT

Evolution of the 502

A softness revolution is here. Experience the evolution of the customer favorite – Premium Cotton 502. Coming to you in the latest winning formula of deep color, deep inventory, and even deeper comfort.

First of Its Kind – Introducing 602 and 602CVC

Coming in at 36 singles, every thread count whispers comfort. The Tultex 602 is the softest t-shirt on the market. Don't take our word for it – feel it for yourself to believe it! Leading the industry at 36 singles and combed over 30%, the 602 is buttery soft. Available in all the best-selling fashion colors and embracing a fit that mirrors popular retail styles, Tultex is a game changer in the world of blank apparel.



Model is wearing 602 in White

TABLE OF CONTENTS

10-11 – 602 & 602CVC

10 – 602 Combed Cotton T-Shirt

11 – 602CVC Combed CVC T-Shirt

12-35 – T-SHIRTS & POLOS

13 – 202 Fine Jersey T-Shirt

15 – 213 Women's Fine Jersey Slim Fit T-Shirt

16 – 214 Women's Fine Jersey V-Neck T-Shirt

17 – 216 Women's Fine Jersey Classic Fit T-Shirt

18 – 235 Youth Fine Jersey T-Shirt

18 – S105 Fine Jersey Tank Top

19 – 245 Fine Jersey Raglan T-Shirt

20 – 246 Fine Jersey Ringer T-Shirt

21 – 290 Heavyweight Jersey T-Shirt

22 – 291 Heavyweight Jersey Long Sleeve T-Shirt

23 – 293 Heavyweight Jersey Pocket T-Shirt

24 – 295 Youth Heavyweight Jersey T-Shirt

25 – 241 Poly-Rich T-Shirt

26 – 207 Poly-Rich V-Neck T-Shirt

27 – 242 Poly-Rich Long Sleeve T-Shirt

28 – 244 Women's Poly-Rich V-Neck T-Shirt

29 – 240 Women's Poly-Rich T-Shirt

31 – 243 Women's Poly-Rich Scoop Neck T-Shirt

31 – 265 Youth Poly-Rich T-Shirt

32 – 190 Women's Poly-Rich Racerback Tank Top

34 – 254 Tri-Blend T-Shirt

34 – 253 Women's Tri-Blend T-Shirt

35 – 400 50/50 Sport Polo

35 – 401 Women's 50/50 Sport Polo

36-29 – FLEECE

37 – 340 Fleece Crewneck Sweatshirt

37 – 320 Fleece Hooded Sweatshirt

39 – 320Y Youth Hooded Sweatshirt

39 – 331 Full-Zip Hooded Sweatshirt

40-43 – PREMIUM COTTON

41 – 502 Premium Cotton T-Shirt

41 – 516 Women's Premium Cotton T-Shirt

42 – 591 Premium Cotton Long Sleeve T-Shirt

43 – 541 Premium Cotton Blend T-Shirt

43 – 542 Women's Premium Cotton Blend T-Shirt

Model is wearing 320Y in Royal



Models are wearing 502 in White
and 253 in Mocha Tri-Blend



Models are wearing 320 in Royal
and 340 in Cantaloupe



602 & 602CVC

Model is wearing 602 in Yellow

NEW 602

COMBED COTTON T-SHIRT

4.2 oz., 100% combed ring-spun USA premium cotton fine jersey, 36 singles. Retail fit. Heat-set fabric. Ribbed crewneck collar. Self-fabric back neck tape and shoulders. Side seams. Double-needle sleeves and bottom hem. Tear away label. USMCA certified.

XS-3XL | Call for Pricing

Black, Charcoal Grey, Charity Pink, Columbia Blue, Cream, Dark Grey, Deep Purple, Deep Teal, Forest, Gold, Kelly, Light Mint, Light Pink, Light Sage, Light Silver, Maroon, Mauve, Military Green, Mustard, Navy Blue, Olive Green, Orange, Orchid, Red, Royal, Tan, Vintage Natural, White, Yellow

For the price point and what's out there, it's way **better quality**. The prints even pop and show up more crisp compared to other brands.

– OLIVIA WISE
Business owner

“



NEW 602CVC
COMBED CVC T-SHIRT

4.2 oz., 52/48 combed ring-spun USA premium cotton/polyester, 36 singles. Heather Black and Heather Grey are 90/10 combed ring-spun USA premium cotton/polyester. Retail fit. Heat-set fabric. Ribbed crewneck collar. Self-fabric back neck tape and shoulders. Side seams. Double-needle sleeves and bottom hem. Tear away label. USMCA certified.

XS-3XL | Call for Pricing

Heather Black, Heather Charity Pink, Heather Columbia Blue, Heather Cream, Heather Dark Grey, Heather Deep Purple, Heather Deep Teal, Heather Forest, Heather Gold, Heather Grey, Heather Ice Blue, Heather Kelly, Heather Light Mint, Heather Light Sage, Heather Light Silver, Heather Maroon, Heather Mauve, Heather Military Green, Heather Mustard, Heather Navy Blue, Heather Olive Green, Heather Orange, Heather Orchid, Heather Red, Heather Royal, Heather Tan, Heather Vintage Natural, Heather Yellow



“

Hands down one of the **best T-shirts** in the industry. It's for everyone that doesn't want to sacrifice quality or depth for price.

– JENNIFER BRADLEY
Outside Sales Rep



Model is wearing 602CVC
in Heather Grey

T-SHIRTS & POLOS

Models are wearing 213 in
Orange and 602 in Yellow





Model is wearing 202 in Cantaloupe

202

FINE JERSEY T-SHIRT

4.5 oz., pre-shrunk 100% ring-spun USA cotton, 30 singles.
 Heather Grey is 90/10 ring-spun cotton/polyester.
 Other heathers are 50/50 ring-spun cotton/polyester.
 Reactive-dyed for longer lasting color. Ribbed crewneck collar. Back neck tape. Shoulder-to-shoulder taping.
 Double-needle stitching on sleeves and bottom hem.
 Tear away label. USMCA certified.

XS-3XL | Call for Pricing

Aqua, Baby Blue, Black, Brown, Burgundy, Cantaloupe, Cardinal, Cassis, Charcoal, Coal, Coral, Ginger, Gold, Heather Burgundy, Heather Cantaloupe, Heather Cassis, Heather Charcoal, Heather Denim, Heather Graphite, Heather Grey, Heather Kelly, Heather Mellow Yellow, Heather Military Green, Heather Neo Mint, Heather Orange, Heather Purist Blue, Heather Purple, Heather Red, Heather Royal, Heather Rust, Indigo, Kelly Green, Military Green, Mint, Natural, Navy, Neo Mint, Orange, Peach, Pink, Purple, Red, Royal, Silver, Slate, Sunshine, Teal, Terracotta, Turquoise, Vintage White, White





Models are wearing 213 in Orange and 602 in Yellow

213

WOMEN'S FINE JERSEY
SLIM FIT T-SHIRT

4.5 oz., pre-shrunk 100% ring-spun USA cotton, 30 singles.
Heather Grey is 90/10 ring-spun cotton/polyester. Slim fit.
Reactive-dyed for longer lasting color. Self-fabric crewneck
collar. Back neck tape. Side seams. Double-needle stitching
on sleeves and bottom hem. Tear away label.
USMCA certified.

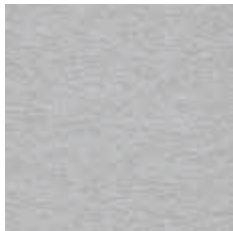
XS-3XL | Call for Pricing

Aqua, Baby Blue, Black, Brown, Charcoal, Coal, Coral, Fuchsia,
Heather Grey, Indigo, Kelly Green, Natural, Navy, Orange, Pink,
Purple, Red, Royal, Silver, Sunshine, Teal, Turquoise, White



Model is wearing 213 in Orange





Model is wearing 214 in White

214

WOMEN'S FINE JERSEY V-NECK T-SHIRT

4.5 oz., pre-shrunk 100% ring-spun USA cotton, 30 singles. Heather Grey is 90/10 ring-spun cotton/polyester. Slim fit. Reactive-dyed for longer lasting color. Self-fabric collar. Taped neck. Side seams. Double-needle stitching on sleeves and bottom hem. Tear away label. USMCA certified.

XS-2XL | [Call for Pricing](#)

Black, Charcoal, Fuchsia, Heather Grey, White

216

WOMEN'S FINE JERSEY CLASSIC FIT T-SHIRT

4.5 oz., pre-shrunk 100% ring-spun USA cotton, 30 singles. Heather Grey is 90/10 ring-spun cotton/polyester. Other heathers are 50/50 ring-spun cotton/polyester. Classic fit. Reactive-dyed for longer lasting color. Ribbed crewneck collar. Back neck tape. Side seams. Double-needle stitching on sleeves and bottom hem. Tear away label. USMCA certified.

S-2XL | Call for Pricing

Black, Fuchsia, Heather Charcoal, Heather Denim, Heather Grey, Navy, Peach, Pink, Red, Slate, White



235

YOUTH FINE JERSEY T-SHIRT

4.5 oz., pre-shrunk 100% ring-spun USA cotton, 30 singles. Heather Grey is 90/10 ring-spun cotton/polyester. Other heathers are 50/50 ring-spun cotton/polyester. Reactive-dyed for longer lasting color. Ribbed crewneck collar. Back neck tape. Shoulder-to-shoulder taping. Double-needle stitching on sleeves and bottom hem. Tear away label. USMCA certified.

XS-XL | [Call for Pricing](#)

Black, Fuchsia, Heather Burgundy, Heather Cantaloupe, Heather Cassis, Heather Charcoal, Heather Denim, Heather Grey, Heather Mellow Yellow, Heather Military Green, Heather Neo Mint, Heather Purist Blue, Heather Red, Heather Royal, Kelly Green, Navy, Pink, Red, Royal, White



Model is wearing
235 in Pink



S105

FINE JERSEY TANK TOP

4.5 oz., 100% ring-spun USA cotton. Heather Grey is 90/10 ring-spun cotton/polyester. Reactive-dyed for longer lasting color. Pre-washed to minimize shrinkage. Ribbed binding on neckline and armholes. Double-needle neck and bottom hem. Tear away label. USMCA certified.

XS-2XL | [Call for Pricing](#)

Black, Heather Grey, Navy, Red, Royal, White



Model is wearing S105 in White



245

FINE JERSEY RAGLAN T-SHIRT

4.5 oz., 100% ring-spun USA cotton, 30 singles.
Heather Grey is 90/10 ring-spun cotton/polyester.
Other heathers are 50/50 ring-spun cotton/polyester.
Reactive-dyed for longer lasting color. Pre-washed to minimize shrinkage. Ribbed crewneck collar. Taped neck and shoulders. Double-needle stitching on sleeves and bottom hem. Overlock stitching on bottom hem. Contrast color three-quarter sleeves. Tear away label.
USMCA certified.

XS-3XL | Call for Pricing

Black/Heather Charcoal, Black/Red, Black/White, Heather Denim/Navy, Heather Grey/Black, Heather Grey/Heather Charcoal, Heather Grey/Heather Red, Heather Grey/Navy, Vintage White/Black, Vintage White/Inked India, Vintage White/Mellow Yellow, Vintage White/Rio Red, White/Black, White/Heather Charcoal, White/Heather Denim, White/Kelly, White/Navy, White/Red, White/Royal



Model is wearing 245 in White/Kelly



Model is wearing 246 in
Vintage White/Mellow Yellow

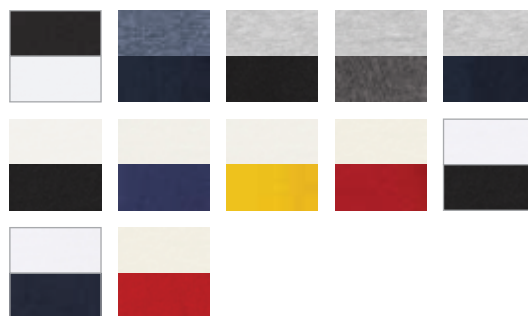
246

FINE JERSEY RINGER T-SHIRT

4.5 oz., 100% ring-spun USA cotton, 30 singles.
Heather Grey is 90/10 ring-spun cotton/polyester.
Other heathers are 50/50 ring-spun cotton/polyester.
Reactive-dyed for longer lasting color. Pre-washed to
minimize shrinkage. Contrast ribbed binding on neckline
and sleeves. Taped neck and shoulders. Double-needle
stitching on neck and bottom hem. Tear away label.
USMCA certified.

XS-3XL | Call for Pricing

Black/White, Heather Denim/Navy, Heather Grey/Black,
Heather Grey/Heather Charcoal, Heather Grey/Navy,
Vintage White/Black, Vintage White/Inked India, Vintage
White/Mellow Yellow, Vintage White/Rio Red, White/Black,
White/Navy, White/Red





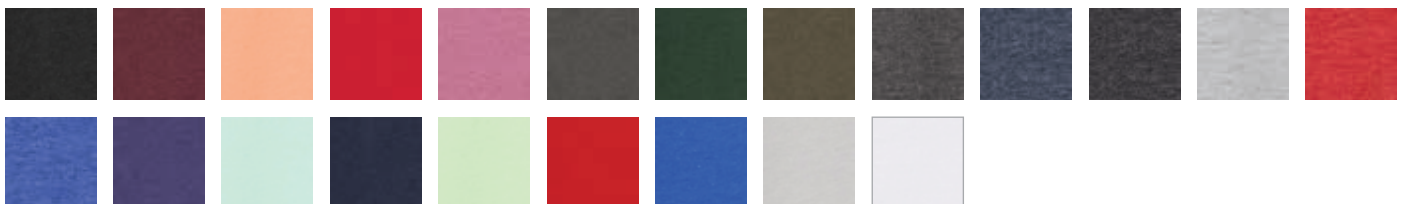
290

HEAVYWEIGHT JERSEY T-SHIRT

5.5 oz., 100% ring-spun USA cotton, 24 singles. Ash is 99/1 ring-spun cotton/polyester. Heather Grey is 90/10 ring-spun cotton/polyester. Other heathers are 50/50 ring-spun cotton/polyester. Reactive-dyed for longer lasting color. Pre-washed to minimize shrinkage. Ribbed crewneck collar. Taped neck and shoulders. Double-needle stitching on sleeves and bottom hem. Tear away label. USMCA certified.

S-4XL | Call for Pricing

Black, Burgundy, Cantaloupe, Cardinal, Cassis, Charcoal, Forest, Grape Leaf, Heather Charcoal, Heather Denim, Heather Graphite, Heather Grey, Heather Red, Heather Royal, Inked India, Light Mint, Navy, Neo Mint, Red, Royal, Silver, White



291

HEAVYWEIGHT JERSEY LONG SLEEVE T-SHIRT

5.5 oz., 100% ring-spun USA cotton, 24 singles.
Heather Grey is 90/10 ring-spun cotton/polyester.
Other heathers are 50/50 ring-spun cotton/polyester.
Reactive-dyed for longer lasting color. Pre-washed to
minimize shrinkage. Ribbed crewneck collar. Taped neck
and shoulders. Double-needle stitching on bottom hem.
Ribbed cuffs. Tear away label. USMCA certified.

S-3XL | \$10.12

*Black, Burgundy, Grape Leaf, Heather Charcoal, Heather Denim,
Heather Grey, Heather Red, Hunter Green, Inked India, Navy,
Neo Mint, Red, Royal, White*

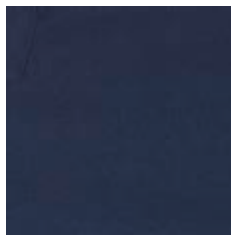


Model is wearing
291 in Neo Mint





Model is wearing
293 in Navy



293

HEAVYWEIGHT JERSEY POCKET T-SHIRT

5.5 oz., 100% ring-spun USA cotton, 24 singles. Heather Grey is 90/10 ring-spun cotton/polyester. Reactive-dyed for longer lasting color. Pre-washed to minimize shrinkage. Ribbed crewneck collar. Taped neck and shoulders. Single-needle left chest pocket. Double-needle stitching on sleeves and bottom hem. Tear away label. USMCA certified.

S-3XL | Call for Pricing

Black, Heather Grey, Navy, Red, White

295

YOUTH HEAVYWEIGHT JERSEY T-SHIRT

5.5 oz., 100% ring-spun USA cotton, 24 singles.

Heather Grey is 90/10 ring-spun cotton/polyester.

Other heathers are 50/50 ring-spun cotton/polyester.

Reactive-dyed for longer lasting color. Pre-washed to minimize shrinkage. Ribbed crewneck collar. Taped neck and shoulders. Double-needle stitching on bottom hem.

Tear away label. USMCA certified.

XS-XL | [Call for Pricing](#)

Black, Heather Charcoal, Heather Grey, Light Pink, Navy, Red, White



241

POLY-RICH T-SHIRT

3.6 oz., 65/35 polyester/combed ring-spun USA cotton, 30 singles. Heat-set to minimize shrinkage. Ribbed crewneck collar. Taped neck and shoulders. Side seams. Double-needle stitching on sleeves and bottom hem. Tear away label. USMCA certified.

XS-3XL | Call for Pricing

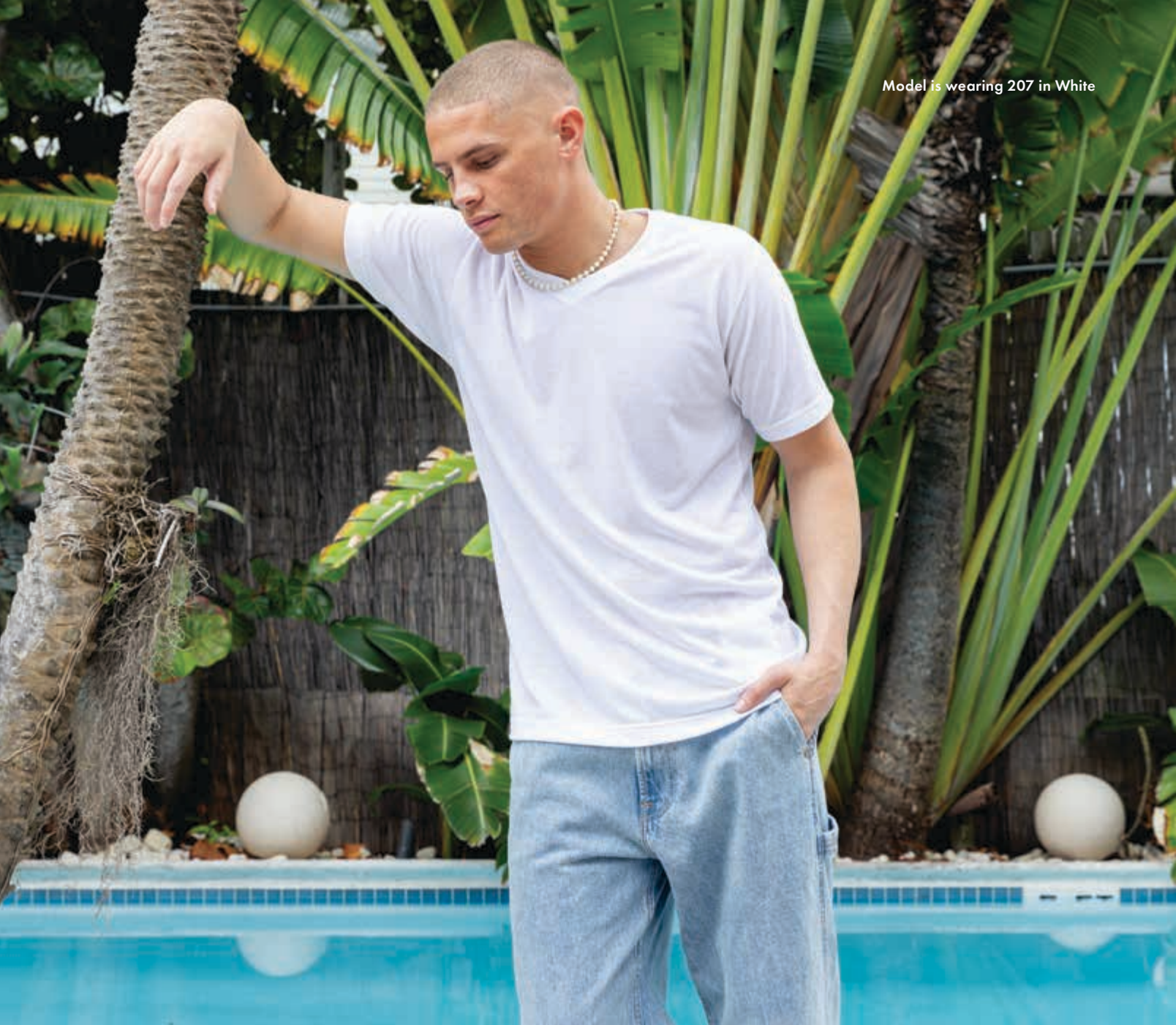
Black, Heather Athletic Blue, Heather Brown, Heather Burgundy, Heather Charcoal, Heather Denim, Heather Graphite, Heather Green, Heather Grey, Heather Hunter, Heather Kelly, Heather Military Green, Heather Navy, Heather Orange, Heather Peach, Heather Purple, Heather Red, Heather Royal, Navy, Red, White



Models are wearing 244 in White and 241 in Heather Peach



Model is wearing 207 in White



207

POLY-RICH V-NECK T-SHIRT

3.6 oz., 65/35 polyester/combed ring-spun USA cotton, 30 singles. Heat-set to minimize shrinkage. Ribbed V-neck collar. Back neck tape. Shoulder-to-shoulder taping. Side seams. Double-needle stitching on sleeves and bottom hem. Tear away label. USMCA certified.

XS-3XL | Call for Pricing

Black, Charcoal, Heather Charcoal, Heather Graphite, Heather Grey, Heather Navy, Heather Red, Navy, Red, White



Model is wearing 242 in White



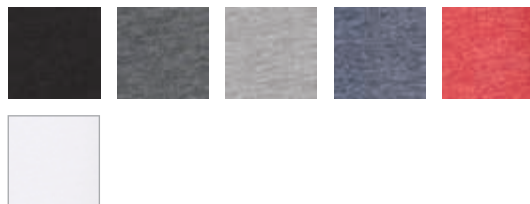
242

POLY-RICH LONG SLEEVE T-SHIRT

3.6 oz., 65/35 polyester/combed ring-spun USA cotton, 30 singles. Ribbed crewneck collar. Taped neck and shoulders. Side seams. Double-needle stitching on sleeves and bottom hem. Tear away label. USMCA certified.

XS-3XL | \$10.18

Black, Heather Charcoal, Heather Grey, Heather Navy, Heather Red, White



244

WOMEN'S POLY-RICH V-NECK T-SHIRT

3.6 oz., 65/35 polyester/combed ring-spun USA cotton, 30 singles. Ribbed collar. Taped neck and shoulders. Side seams. Double-needle stitching on sleeves and bottom hem. Tear away label. USMCA certified.

XS-2XL | Call for Pricing

Black, Heather Charcoal, Heather Purple, Heather Red, Heather Royal, White



Model is wearing 244 in White
and 241 in Heather Peach

Model is wearing 240 in
Heather Athletic Blue

240
WOMEN'S POLY-RICH T-SHIRT

3.6 oz., 65/35 polyester/combed ring-spun USA cotton, 30 singles. Heat-set to minimize shrinkage. Slim fit. Self-fabric collar. Back neck tape. Side seams. Double-needle stitching on sleeves and bottom hem. Tear away label. USMCA certified.

XS-2XL | [Call for Pricing](#)

Black, Heather Athletic Blue, Heather Brown, Heather Charcoal, Heather Fuchsia, Heather Graphite, Heather Green, Heather Grey, Heather Navy, Heather Orange, Heather Pink, Heather Purple, Heather Red, White





Models are wearing 290 in Cassis
and 243 in Heather Purple

243

WOMEN'S POLY-RICH SCOOP NECK T-SHIRT

3.6 oz., 65/35 polyester/combed ring-spun USA cotton, 30 singles. Ribbed collar. Taped neck and shoulders. Side seams. Double-needle stitching on sleeves and bottom hem. Tear away label. USMCA certified.

XS-2XL | Call for Pricing

Black, Heather Charcoal, Heather Purple, Heather Red, Heather Royal, White



265

YOUTH POLY-RICH T-SHIRT

3.6 oz., 65/35 polyester/ring-spun USA cotton, 30 singles. Ribbed crewneck collar. Taped neck and shoulders. Side seams. Double-needle stitching on sleeves and bottom hem. Tear away label. USMCA certified.

XS-XL | Call for Pricing

Black, Heather Charcoal, Heather Graphite, Heather Grey, Heather Navy, Heather Purple, Heather Red, Heather Royal, White



Model is wearing
265 in White



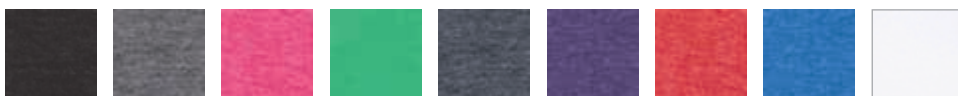
190

WOMEN'S POLY-RICH RACERBACK TANK TOP

3.6 oz., 65/35 polyester/combed ring-spun USA cotton, 30 singles. Ribbed binding around neck and armholes. Double-needle stitched hem. Side seams. Tear away label. USMCA certified.

XS-2XL | [Call for Pricing](#)

Black, Heather Charcoal, Heather Fuchsia, Heather Kelly, Heather Navy, Heather Purple, Heather Red, Heather Royal, White



Model is wearing 190 in White





Model is wearing
254 in Jade Tri-Blend

254

TRI-BLEND T-SHIRT

3.7 oz., 50/25/25 polyester/ring-spun USA cotton/rayon, 30 singles. Ribbed crewneck collar. Taped neck and shoulders. Side seams. Double-needle stitching on sleeves and bottom hem. Tear away label. USMCA certified.

XS-3XL | \$10.22

Athletic Blue Tri-Blend, Berry Tri-Blend, Cardinal Tri-Blend, Denim Tri-Blend, Graphite Tri-Blend, Heather Tri-Blend, Jade Tri-Blend, Midnight Tri-Blend, Military Tri-Blend, Mocha Tri-Blend, Solid Black Tri-Blend



Model is wearing 253
in Mocha Tri-Blend

253

WOMEN'S TRI-BLEND T-SHIRT

3.7 oz., 50/25/25 polyester/ring-spun USA cotton/rayon, 30 singles. Feminine slim fit. Ribbed crewneck collar. Taped neck. Side seams. Double-needle stitching on sleeves and bottom hem. Tear away label. USMCA certified.

XS-2XL | Call for Pricing

Athletic Blue Tri-Blend, Berry Tri-Blend, Graphite Tri-Blend, Heather Tri-Blend, Lilac Tri-Blend, Midnight Tri-Blend, Mocha Tri-Blend, Seafoam Tri-Blend



Models are wearing 400 in Heather Light Blue and 401 in White



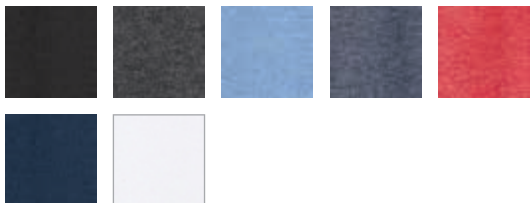
400

50/50 SPORT POLO

6.7 oz., 50/50 cotton/polyester. Pique textured knit. Contoured welt collar and cuffs. Three button placket. Banded sleeves. Double-needle bottom hem. Tear away label. USMCA certified.

S-2XL | \$10.86

Black, Heather Charcoal, Heather Light Blue, Heather Navy, Heather Red, Navy, White



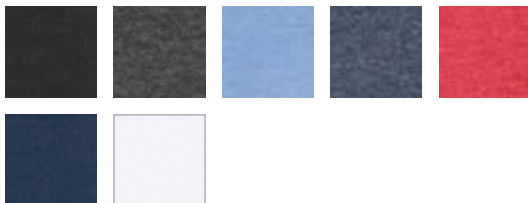
401

WOMEN'S 50/50 SPORT POLO

6.7 oz., 50/50 cotton/polyester. Pique textured knit. Contoured welt collar and cuffs. Three button placket. Side seams. Double-needle bottom hem. Tear away label. USMCA certified.

S-XL | \$10.58

Black, Heather Charcoal, Heather Light Blue, Heather Navy, Heather Red, Navy, White



FLEECE



Model is wearing 320Y in Heather Charcoal

340**FLEECE CREWNECK SWEATSHIRT**

7.5 oz., 80/20 ring-spun cotton/polyester, 24 singles. Heather Grey is 75/25 ring-spun cotton/polyester. Heathers are 50/50 ring-spun cotton/polyester. Solid colors are 100% cotton face. Reactive-dyed for longer lasting color. Drop shoulder. Side seams. Ribbed neckline, cuffs and waistband with 5% spandex. Tear away label. USMCA certified.

XS-3XL | \$16.80

Black, Cantaloupe, Charcoal, Heather Charcoal, Heather Denim, Heather Grey, Heather Red, Navy, Neo Mint, Purist Blue, Red, Royal, White

**320****FLEECE HOODED SWEATSHIRT**

7.5 oz., 80/20 ring-spun cotton/polyester, 24 singles. Heather Grey is 75/25 ring-spun cotton/polyester. Other heathers are 50/50 ring-spun cotton/polyester. Solid colors are 100% cotton face. Reactive-dyed for longer lasting color. Jersey-lined hood. Matching flat drawcord. Pouch pocket. Ribbed cuffs and waistband with 5% spandex. Tear away label. USMCA certified. Cantaloupe, Neo Mint, and Purist Blue have contrasting natural flat drawcords. Solid color (80/20) cotton poly, 100% cotton face garments have a soft and cozy feel on the inside with a printer-friendly surface on the exterior – ready for anything and great for DTG and Sublimation.

XS-3XL | \$24.86

Black, Cantaloupe, Charcoal, Heather Charcoal, Heather Denim, Heather Graphite, Heather Grey, Heather Red, Navy, Neo Mint, Purist Blue, Red, Royal, White



Models are wearing 320 in
Royal and 340 in Cantaloupe



Models are wearing 320Y in
Royal and Heather Charcoal



320Y

YOUTH HOODED SWEATSHIRT

7.5 oz., 80/20 ring-spun USA cotton/polyester, 24 singles. Heather Grey is 75/25 ring-spun cotton/polyester. Other heathers are 50/50 ring-spun cotton/polyester. Solid colors are 100% cotton face. Reactive-dyed for longer lasting color. Jersey-lined hood. No drawcord. Pouch pocket. Ribbed cuffs and waistband with 5% spandex. Tear away label. USMCA certified. Solid color (80/20) cotton poly, 100% cotton face garments have a soft and cozy feel on the inside with a printer-friendly surface on the exterior - ready for anything and great for DTG and sublimation.

XS-XL | \$19.12

Black, Heather Charcoal, Heather Grey, Navy, Red, Royal, White

331

FULL-ZIP HOODED SWEATSHIRT

8 oz., 80/20 ring-spun cotton/polyester, 24 singles. Heather Grey is 75/25 ring-spun cotton/polyester. Other heathers are 50/50 ring-spun cotton/polyester. Solid colors are 100% cotton face. Reactive-dyed for longer lasting color. Jersey-lined hood. Matching flat drawcords. Split pouch pocket. #5 nickel cadmium kissing zipper. Ribbed cuffs and waistband with 5% spandex. Tear away label. USMCA certified. Solid color (80/20) cotton poly, 100% cotton face garments have a soft and cozy feel on the inside with a printer-friendly surface on the exterior - ready for anything and great for DTG and sublimation.

S-3XL | \$29.28

Black, Charcoal, Heather Charcoal, Heather Denim, Heather Graphite, Heather Grey, Heather Red, Navy, Red, Royal, White



Model is wearing 331 in Charcoal



**PREMIUM
COTTON**





Model is wearing 502 in White

502

PREMIUM COTTON T-SHIRT

4.3 oz., 100% combed ring-spun USA premium cotton fine jersey, 30 singles. Heather Grey is 90/10 combed ring-spun USA premium cotton/polyester. Reactive-dyed, dischargeable. Pre-washed to minimize shrinkage. Ribbed crewneck collar. Taped neck and shoulders. Side seams. Double-needle sleeves and bottom hem. Tear away label. USMCA certified.

XS-3XL | Call for Pricing

Black, Burgundy, Buttercream, Cardinal, Charcoal, Forest, Heather Grey, Kelly, Mauve, Navy, Olive, Peach, Red, Royal, Sage, Silver, Slate, Terracotta, White



Model is wearing 516 in White

516

WOMEN'S PREMIUM COTTON T-SHIRT

4.3 oz., 100% combed ring-spun USA premium cotton fine jersey, 30 singles. Heather Grey is 90/10 combed ring-spun USA premium cotton/polyester. Reactive-dyed, dischargeable. Ribbed crewneck collar. Taped neck and shoulders. Side seams. Double-needle sleeves and bottom hem. Tear away label. USMCA certified.

S-2XL | Call for Pricing

Black, Burgundy, Charcoal, Heather Grey, Kelly, Navy, Olive, Red, Royal, Silver, White



Model is wearing 591 in White



591

**PREMIUM COTTON
LONG SLEEVE T-SHIRT**

4.3 oz., 100% combed ring-spun USA premium cotton fine jersey, 30 singles. Reactive-dyed, dischargeable. Pre-washed to minimize shrinkage. Ribbed crewneck collar. Taped neck and shoulders. Side seams. Double-needle sleeves and bottom hem. Tear away label. USMCA certified.

XS-3XL | \$11.30

Black, White

541**PREMIUM COTTON
BLEND T-SHIRT**

4.3 oz., 50/50 combed ring-spun USA premium cotton/polyester fine jersey, 30 singles. Reactive-dyed. Pre-washed to minimize shrinkage. Ribbed crewneck collar. Taped neck and shoulders. Side seams. Double-needle sleeves and bottom hem. Tear away label. USMCA certified.

S-3XL | Call for Pricing

Antique Gold Heather, Athletic Heather, Black, Black Heather, Brown Heather, Burgundy Heather, Cactus Flower Heather, Kelly Heather, Navy Heather, Olive Heather, Peach Heather, Red Heather, Royal Heather



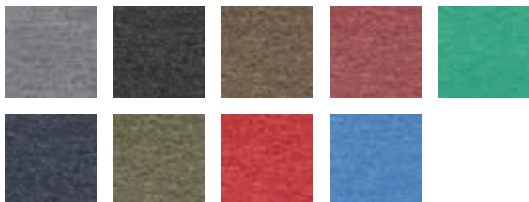
Model is wearing 541
in Burgundy Heather

**542****WOMEN'S PREMIUM COTTON
BLEND T-SHIRT**

4.3 oz., 50/50 combed ring-spun USA premium cotton/polyester fine jersey, 30 singles. Reactive-dyed. Pre-washed to minimize shrinkage. Ribbed crewneck collar. Taped neck and shoulders. Side seams. Double-needle sleeves and bottom hem. Tear away label. USMCA certified.

XS-2XL | Call for Pricing

Athletic Heather, Black Heather, Brown Heather, Burgundy Heather, Kelly Heather, Navy Heather, Olive Heather, Red Heather, Royal Heather



Model is wearing 542
in Red Heather





602 & 602CVC	10-11
602 Combed Cotton T-Shirt	10
602CVC Combed CVC T-Shirt	11
 T-SHIRTS & POLOS	12-35
202 Fine Jersey T-Shirt	13
213 Women's Fine Jersey Slim Fit T-Shirt	15
214 Women's Fine Jersey V-Neck T-Shirt	16
216 Women's Fine Jersey Classic Fit T-Shirt	17
235 Youth Fine Jersey T-Shirt	18
5105 Fine Jersey Tank Top	18
245 Fine Jersey Raglan T-Shirt	19
246 Fine Jersey Ringer T-Shirt	20
290 Heavyweight Jersey T-Shirt	21
291 Heavyweight Jersey Long Sleeve T-Shirt	22
293 Heavyweight Jersey Pocket T-Shirt	23
295 Youth Heavyweight Jersey T-Shirt	24
241 Poly-Rich T-Shirt	25
207 Poly-Rich V-Neck T-Shirt	26
242 Poly-Rich Long Sleeve T-Shirt	27
244 Women's Poly-Rich V-Neck T-Shirt	28
240 Women's Poly-Rich T-Shirt	29
243 Women's Poly-Rich Scoop Neck T-Shirt	31
265 Youth Poly-Rich T-Shirt	31
190 Women's Poly-Rich Racerback Tank Top	32
254 Tri-Blend T-Shirt	34
253 Women's Tri-Blend T-Shirt	34
400 50/50 Sport Polo	35
401 Women's 50/50 Sport Polo	35
 FLEECE	36-39
340 Fleece Crewneck Sweatshirt	37
320 Fleece Hooded Sweatshirt	37
320Y Youth Hooded Sweatshirt	39
331 Full-Zip Hooded Sweatshirt	39
 PREMIUM COTTON	40-43
502 Premium Cotton T-Shirt	41
516 Women's Premium Cotton T-Shirt	41
591 Premium Cotton Long Sleeve T-Shirt	42
541 Premium Cotton Blend T-Shirt	43
542 Women's Premium Cotton Blend T-Shirt	43



Models are wearing 602 in Columbia
Blue and 240 in Heather Green



