



NEW PRODUCT GUIDE

2024

TABLE OF CONTENTS

Brands	4 - 47	Leisure & Outdoor	129 - 136
Megabrite & Megalaser	48 - 57	Blankets	137 - 138
Drinkware	58 - 67	Housewares	139 - 142
Gift Sets	68 - 70	Plush & Novelties	143 - 148
Gourmet Food Gifts	71 - 74	Amenities & Personal Care	149 - 150
Hitronics	75 - 98	Tools, Lights & Key Tags	151 - 153
Bags, Duffels & Accessories	99 - 109	Desk Accessories	154 - 155
Coolers	110 - 117	Journals & Notebooks	156 - 158
Drawstrings & Backpacks	118 - 121	Writing Instruments	159 - 161
Headwear & Accessories	122 - 128		

We offer a large selection of Brands to fit any promotional campaign need.

OTTERBOX

swig
LIFE

Imperial
SINCE 1916

AWS



TUMI

Linq

FLEXFIT

BRÜMATE

Matador



STORMTECH



GILDAN



BELLA+CANVAS
LOS ANGELES

bloomin'
what you say grows



MEGAPRO
Every bit better.



BagBoy



Happy's

MOUNTAIN
STANDARD
COLORADO



REPREVE

The SmartNotebook

Classique
BY V&F

PRESTO

And
more!



The AWS collection is in memory of Bill Schmidt Sr., Founder of our company. Mr. Schmidt was respected and loved by all who had the pleasure to know him. A generous and kind-hearted man, Bill Sr. valued others and had a passion for philanthropy.

To honor his legacy, we will donate 5% of the proceeds from the AWS line that carries his initials. The recipients of those gifts are some of his favorite charities below.



#50160 - 40 OZ. AWS JACKSON INTREPID STAINLESS STEEL TUMBLER

- Stainless Steel Outer and Inner Tumbler With Handle
- Double Wall Construction For Insulation Of Hot Or Cold Liquids
- Keeps Drinks Cold Up To 24 Hours And Hot Up To 8 Hours
- Screw-On, Spill-Resistant Lid with Straw Hole and 12" Straw
- Vacuum Insulated • Meets FDA Requirements
- BPA Free • Hand Wash Recommended



#50161 - 40 OZ. AWS INTREPID STAINLESS STEEL TUMBLER

- Stainless Steel Outer and Inner Tumbler With Handle
- Double Wall Construction For Insulation Of Hot Or Cold Liquids
- Keeps Drinks Cold Up To 24 Hours And Hot Up To 8 Hours
- Screw-On, Spill-Resistant Lid with Straw Hole and 12" Straw
- Vacuum Insulated • Meets FDA Requirements
- BPA Free • Hand Wash Recommended

#50153 - 14 OZ. AWS CONRAD STAINLESS STEEL BOTTLE

- Stainless Steel Outer And Inner
- Double Wall Construction For Insulation Of Hot Or Cold Liquids
- Screw On, Spill-Resistant Lid
- Wide Mouth Opening
- Removable Leatherette Strap
- Meets FDA Requirements
- BPA Free
- Hand Wash Recommended

#55153 - 20 OZ. AWS FULL COLOR TWO-TONE HIMALAYAN TUMBLER

- Stainless Steel Outer And Inner
- Powder Coated Finish
- Double Wall Construction For Insulation Of Hot Or Cold Liquids
- Snap-On, Spill-Resistant Thumb-Slide Lid With Rubber Gasket
- Due To Vacuum Insulation Technology, Capacity Is 18 Oz. With Lid On
- Non-Slip Bottom
- Meets FDA Requirements
- BPA Free
- Hand Wash Recommended



#50153



#55153



#75051 PRESTO® NOMAD® MASON JAR FOOD WARMER

- Transport Prepared Food From Home To Most Anywhere And Heat Once You Arrive
- Place Food In Included Mason Jar And Enjoy Hot Lunches At Work, School Or Home
- Food Warmer Cover Seals Tight To Prevent Spills
- Storage On Top Of Lid For Crackers Or Condiments
- Easy Carry Handle With Utensil Storage Band Holds Two Utensils (Not Included)
- Includes Pint Size Mason Jar (16 Ounces)
- Instructions Included

STICK'nGlide™



#59901



#59900



#59902

- #59900 STICK'N GLIDE TABLE TOPPER DISPLAY 8 3/10" X 11 7/10"
- #59901 STICK'N GLIDE TABLE TOPPER DISPLAY 5 4/5" X 8 3/10"
- #59902 STICK'N GLIDE TABLE TOPPER DISPLAY 4 1/10" X 5 4/5"
- Made Of White PVC Or Clear PETG Material
- Suction Effect Is Created By A Vacuum That Is Formed Between The Smooth Surface And The Display
- Made In USA
- EQP Does Not Apply

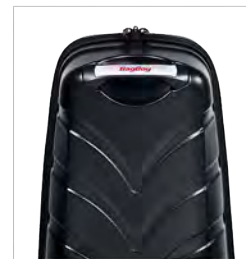


#30101 BAGBOY® T-10 TRAVEL COVER

- Crush-Resistant ABS Top For Maximum Club Protection
- Larger, Premium In-Line Skate Wheels
- All-Weather 600D Polyester Fabric Body Stores Inside Hard Top For Compact Storage
- Main Handle Integrated Into Bag Top
- Lockable, Full Wrap-Around Zipper Simplifies Access And Packing
- Heavy-Duty Anti-Burst Strap
- Two External Oversized Pockets
- Two Internal Organization Mesh Pockets
- Durable, Skid-Resistant ABS Base
- Internal Compression Strap Stabilizes Bag During Travel
- Oversized, Dual-Zippered Shoe/Garment Pocket
- Standguard™ A Uniquely Designed Internal High-Density Foam Padding To Protect The Stand Bag Mechanism While Traveling



Top Handle



Wheels



#3101 BAGBOY® T-750 TRAVEL COVER

- Extra Thick 4-Sided Padded Top With High Density Foam For Maximum Club Protection
- Deluxe In-Line Skate Wheels Provide Smooth Rolling Action
- Reinforced Corners For Extra Protection
- Lockable, Full Wrap-Around Zipper Simplifies Access And Packing

#30100 BAGBOY® T-460 TRAVEL COVER

- Made Of 600D Nylon • Weather And Tear-Resistant 600D Polyester
- Fits A 48" Driver And Up To A 10" Cart Bag
- Lockable Wrap-Around Zipper For Easy Access To Club Compartment
- Smooth-Rolling Wheels And Reinforced Corners For Added Durability
- Reinforced Nylon Carrying Strap With Locking Handle
- Integrated ID Tag
- Oversized, Dual-Zippered Shoe/Garment Pocket
- Lockable, Wrap-Around Zipper For Easy Access To Club Compartment
- Oversized Shoe/Garment Pocket
- Internal Compression Strap Stabilizes Bag During Travel



#6072 DEVANT CADDY TOWEL

- 93% Cotton, 7% Polyester
- Extremely Absorbent And Durable
- Gentle Ribbed Material Is Great For Maintaining Clubs



#6072

#6078 DEVANT TRIFOLD MICROSCRUBBER TOWEL

- 80% Polyester, 20% Polyamide Blended Microfiber
- Ultra-Absorbent
- Tri-Fold Design With Metal Grommet And Hook



#6078



#6079



#6091

#6079 DEVANT RIVAL MICROFIBER TOWEL

- 85% Polyester, 15% Polyamide Microfiber
- Textured Microfiber Front For Clubs And Balls,
- Plush Fleece Back For Hands And Face
- Integrated Web Strap

#6091 DEVANT TOUR MICROFIBER TOWEL

- 80% Polyester, 20% Polyamide
- Lightweight
- Features Deep Waffle Weave Pattern To Clean Clubs

#6092 DEVANT ULTIMATE MICROFIBER TOWEL

- 80% Polyester, 20% Polyamide
- Lightweight
- Integrated Web Strap Slides Easily Over Club Heads



#6092



Veteran-Owned
Hand-Crafted in Idaho
Built Tough for Lifetime Use



**#5430 CORDOVA BACKCOUNTRY
CLASS™ LUNCHPACK COOLER**

- Made Of 840D Nylon
- Hard-Cell Insulation To Keep Food
And Beverages Chill All Day Long
- Light-Weight And Grab Handle For Easy Carry
- Front Zippered Pocket
- Holds Up To 4 Cans Of Your Favorite Beverage

ISlide



#MCORE ISLIDE MANTRA SLIDES

- Made With EVA And PU
- Immediate Slip-On Cushion For All-Day Wear
- RPL Molded Footbed Optimized For Comfort
- Basketball Sneaker Inspired Outsole
- Unisex Shoe Sizes
- Logo Will Be the Same On Each Shoe
- Excluded from EQP

#70000 ISLIDE MOTTO SLIDES

- Made With EVA And PU
- Immediate Slip-On Cushion
- Lightweight And Stylish For Everyday Versatility
- Basketball Sneaker Inspired Outsole
- Unisex Shoe Sizes
- Logo Will Be the Same On Each Shoe
- Excluded from EQP





hari mari

- Price Includes #0PATCH14 Dye Sublimated Emblem On One Strap
- All Styles, Colors And Sizes Can Be Combined To Obtain MOQ
- Excluded From EQP



#HM1007

#HM1007 HARI MARI MEN'S PIER FLIP FLOPS

- MemoryFoamToe™ Post Eliminates Break-In Period For Instant Comfort
- Soft, Water-Resistant Nubuck Leather Strap, Lined With Memory Foam For Ultimate Comfort
- Firm Arch Support Keeps Feet In Proper Position
- Durable, Crepe-Textured Non-Marking Rubber Outsole
- Boat Safe Outsoles Provide Extra Grip With 100% Rubber Traction



Patch
decoration

#HM1031 HARI MARI MEN'S FIELDS FLIP FLOPS

- MemoryFoamToe™ Post Eliminates Break-In Period For Instant Comfort
- Arch Support And Memory Foam Footbeds Support Everyday Exploration
- Gentle Heel Cupping Keep Feet From Fishtailing And Ensure A Snug Fit
- Boat Safe Outsoles Provide Extra Grip With 100% Rubber Traction

#HM1061 HARI MARI MEN'S DUNES FLIP FLOPS

- Immediate Slip-On Cushion For All-Day Wear
- Memory Foam-Lined Straps For Added Comfort
- Made With Firm Arch Supports & Soft-Squeeze Foot Beds
- Real Rubber Soles For Extra Traction On Wet Surfaces
- Boat Safe & Floats In Water

#HM2009 HARI MARI WOMEN'S MEADOWS FLIP FLOPS

- MemoryFoamToe™ Post Eliminates Break-In Period For Instant Comfort
- Soft, V-Cut Leather Straps And Premium Nubuck Leather Foot Bed For Cloud-Like Feel
- Firm Arch Support For All-Day Comfort
- Slim-Contoured Women's Sandal Profile Transitions Seamlessly From Day To Night
- Boat Safe Outsoles Provide Extra Grip With 100% Rubber Traction

#HM2400 HARI MARI WOMEN'S DUNES FLIP FLOPS

- Immediate Slip-On Cushion For All-Day Wear
- Memory Foam-Lined Straps For Added Comfort
- Made With Firm Arch Supports & Soft-Squeeze Foot Beds
- Real Rubber Soles For Extra Traction On Wet Surfaces
- Boat Safe & Floats In Water

#HM2800 HARI MARI WOMEN'S FIELDS FLIP FLOPS

- MemoryFoamToe™ Post Eliminates Break-In Period For Instant Comfort
- Buttery-Soft Nubuck Leather Footbeds And Straps Treat Feet To Ultra-Comfortable Durability
- Arch Support And Memory Foam Footbeds Support Everyday Exploration
- Gentle Heel Cupping Keep Feet From Fishtailing And Ensure A Snug Fit
- Boat Safe Outsoles Provide Extra Grip With 100% Rubber Traction



#HM1031



#HM1061



#HM2009



#HM2400



#HM2800



**MADE IN
THE USA**

**REEF
FRIENDLY**

**IT'S SIMPLE
WE CARE ABOUT THE PLANET.
WE CARE ABOUT THE ANIMALS.
WE CARE ABOUT OUR FAMILIES.
SO, WE CONTINUE TO LOOK FOR WAYS TO MAKE OUR
PRODUCTS WITHOUT STUFF THAT COULD HURT ANY OF THEM.**

#95288 SUN BUM® REVITALIZING SHAMPOO

- Daily Revitalizing Shampoo Enriched With Coconut Oil, Banana Pulp & Fiber, And Sunflower Seed Oil
- Helps Restore Lost Moisture, Repair Damage And Provide Humidity-Resistant Frizz Control
- For All Hair Types • Lightly Scented
- Travel Size 3 Fl. Oz. TSA Approved
- Shampoo Made In USA
- Meets FDA Requirements

#95287 SUN BUM® REVITALIZING CONDITIONER

- Daily Hydrating Conditioner Enriched With Coconut Oil, Banana Pulp And Sunflower Seed Oil
- Powerful Antioxidants Provide UV Protection To Help Prevent Color Fade And Damage
- For All Hair Types • Lightly Scented
- Travel Size 3 Fl. Oz. TSA Approved
- Conditioner Made In USA
- Meets FDA Requirements

#90061 SUN BUM® REVITALIZING 3-IN-1 LEAVE IN CONDITIONER

- Daily Hair Treatment Enriched With Coconut Oil, Banana Pulp And Sunflower Seed Oil
- Detangles, Conditions And Protects Hair While Restoring Its Natural Body
- Lightly Scented • For All Hair Types
- Travel Size 1.5 Fl. Oz. TSA Approved
- 3-In-1 Leave In Conditioner Made In The USA
- Meets FDA Requirements

#9253 SUN BUM® 3.4 OZ. SPF 45 FACE MIST

- Broad Spectrum Formula Protects Against Both UVA And UVB Rays, Reducing The Risk Of Sunburn, Skin Cancer And Premature Skin Aging
- Sheer, Lightweight And Water-Resistant Up To 40 Minutes
- Enriched With Witch Hazel • Non-Comedogenic
- Lightly Scented • Face Mist Made In The USA
- Meets FDA Requirements



#95288



#95287



#90061



#9253



#95290 SUN BUM® 3-IN-1 LEAVE-IN

CONDITIONER & SPF 45 FACE MIST KIT

- Kit Includes #9253 Sun Bum® 3.4 Oz. SPF 45 Face Mist, #90061 Sun Bum® 3-In-1 Leave In Conditioner And #6238 Cotton Carrying Pouch
- Price Includes 1-Color/1-Location Imprint On #6238 Cotton Carrying Pouch
- 3-In-1 Leave In Conditioner & Face Mist Made In USA



#95289 SUN BUM® REVITALIZING SHAMPOO & CONDITIONER TRAVEL KIT

- Kit Includes #95288 Sun Bum® Revitalizing Shampoo, #95287 Sun Bum® Revitalizing Conditioner And #6238 Cotton Carrying Pouch
- Price Includes 1-Color/1-Location Imprint On #6238 Cotton Carrying Pouch
- Shampoo & Conditioner Made In USA

BRÜMATE



#50211



#50199



#50199



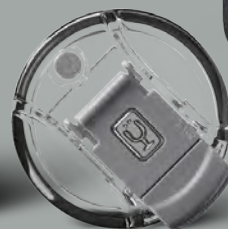
#50208



Back



#50197



#50196

#50208 - 26 OZ. BRÜMATE MULTISHAKER

#50224 - 26 OZ. BRÜMATE MULTISHAKER

- Made Of Stainless Steel • Powder Coated Finish
- BevGuard™ Insulation To Keep Beverage Cold For 24+ Hours
- Screw-On, MagFlip™ Tritan™ Spill Resistant, Flip Top Lid With Easy Carry Handle
- Built-in Agitator/Infuser • Volume Markings On The Inside
- Non-Slip Base • Cup Holder Friendly • Meets FDA Requirements
- BPA Free • Hand Wash Recommended
- See #50224 For More Color Options.

#50197 - 12/16 OZ. BRÜMATE HOPSULATOR TRIO

#50218 - 12/16 OZ. BRÜMATE HOPSULATOR TRIO

- Made Of Stainless Steel • 3-In-1 Technology • Fits Most 16 Oz. Cans
- A Freezable Adapter To Convert Can Cooler For 12 Oz. Cans
- Includes Screw-On BevLock™ Tritan™ Leakproof Lid To Convert Into A 16 Oz. Pint Tumbler
- BevGuard™ Insulation For Keeping Your Drink Ice-Cold
- Push-Lock™ Technology To Easily Insert And Remove Cans Without Unscrewing The Gasket • Cup Holder Friendly
- Meets FDA Requirements • BPA Free • Hand Wash Recommended
- See #50218 For More Color Options.

#50196 - 12 OZ. BRÜMATE HOPSULATOR SLIM

#50217 - 12 OZ. BRÜMATE HOPSULATOR SLIM

- Made Of Stainless Steel
- BevGuard™ Insulation For Keeping Your Drink Ice-Cold
- Push-Lock™ Technology To Easily Insert And Remove Cans Without Unscrewing The Gasket
- Holds Most 12 Oz. Cans And Glass Bottles Including Beer, Soda And Sparkling Water
- Cup Holder Friendly • Non-Slip Base • Meets FDA Requirements
- BPA Free • Hand Wash Recommended
- See #50217 For More Color Options.

#50202 - 64 OZ. BRÜMATE GROWL'R

- Made Of Stainless Steel • Powder Coated Finish
- Designed To Keep Your Beer Cold And Carbonated For 48+ Hours
- Made For Chilled Refills
- Screw-On, Spill Resistant Lid With Easy Carry Handle
- Wide Mouth Opening • 100% Leakproof • Brewery Approved
- Glass-Free Zone Friendly • Non-Slip Base
- Meets FDA Requirements • BPA Free
- Hand Wash Recommended



Back



#50202



#50198



#50206

#50198 - 22 OZ. BRÜMATE TODDY

#50219 - 22 OZ. BRÜMATE TODDY

- Made Of Stainless Steel
- BevGuard™ Insulation For Keeping Your Drink Cold For 24 Hours And Hot For 4 Hours
- Screw-On, BevLock™ Tritan™ Spill Resistant Lid
- Left And Right Hand Friendly • Cup Holder Friendly
- Non-Slip Base • No Condensation • No Metallic Taste
- Meets FDA Requirements • BPA Free • Hand Wash Recommended
- See #50219 For More Color Options.

#50206 - 32 OZ. BRÜMATE TODDY XL

#50222 - 32 OZ. BRÜMATE TODDY XL

- Made Of Stainless Steel • Powder Coated Finish
- BevGuard™ Insulation For Keeping Your Drink Cold For 24+ Hours And Hot For 6 Hours
- Screw-On, BevLock™ Tritan™ Spill Resistant Lid
- Left And Right Hand Friendly • Cup Holder Friendly
- Non-Slip Base • No Condensation • No Metallic Taste
- Meets FDA Requirements • BPA Free • Hand Wash Recommended
- See #50222 For More Color Options.

#50207 - 22 OZ. BRÜMATE NAV

#50223 - 22 OZ. BRÜMATE NAV

- Made Of Stainless Steel • Powder Coated Finish
- BevGuard™ Insulation For Keeping Your Drink Cold For 24 Hours And Hot For 4 Hours
- Screw-On, BevLock™ Tritan™ Spill Resistant Lid
- Non-Slip Base • No Metallic Taste • Cup Holder Friendly
- Meets FDA Requirements • BPA Free • Hand Wash Recommended
- See #50223 For More Color Options.

#50210 - 32 OZ. BRÜMATE NAV XL

- Made Of Stainless Steel • Powder Coated Finish
- BevGuard™ Insulation To Keep Beverage Cold For 24+ Hours And Hot For 6 Hours
- Screw-On, BevLock™ Tritan™ Spill Resistant Lid • Non-Slip Base
- Cup Holder Friendly • No Metallic Taste • Meets FDA Requirements
- BPA Free • Hand Wash Recommended



#50210



Back



#50207

Back

#50200 - 16 OZ. BRÜMATE TODDY

- Made Of Stainless Steel
- Powder Coated Finish
- BevGuard™ Insulation For Keeping Your Drink Cold For 24 Hours And Hot For 4 Hours
- Screw-On, BevLock™ Tritan™ Spill Resistant Lid
- Left And Right Hand Friendly
- Non-Slip Base
- No Condensation
- No Metallic Taste
- Meets FDA Requirements
- BPA Free
- Hand Wash Recommended



#50200



#50205 - 12 OZ. BRÜMATE ROCKS

#50221 - 12 OZ. BRÜMATE ROCKS

- Made Of Stainless Steel • Powder Coated Finish
- BevGuard™ Insulation For Keeping Your Drink Cold For 12 Hours And Hot For 3 Hours
- Screw-On, BevLock™ Tritan™ Spill Resistant Lid
- Non-Slip Base • No Condensation
- Meets FDA Requirements • BPA Free
- Hand Wash Recommended
- See #50221 For More Color Options.



Lid Not Shown

#50096 - 20 OZ. BRÜMATE POUR OVER TUMBLER

- Stainless Steel Outer and Inner • Made With BevGaurd™ Technology
- Keeps Drinks Cold Up To 6 Hours And Hot Up To 24 Hours
- Screw-On Lid Locking Muv Lid Made From Tritan™ Renew From Eastman
- Easy Grab Handle On Lid
- 16 Oz Brewing Capacity + 4 Oz for Milk or Cream
- Pour Over Nesting Cup So You Can Brew Your Favorite Coffee Directly Into The Tumbler
- Craft The Perfect, Single-Cup Pour Over Anywhere • Cup Holder Friendly
- Includes 10 Filters. New Filters Need To Be Ordered Off Brümte Website.
- Meets FDA Requirements • BPA Free • Hand Wash Recommended



#50211



Back

Bottle Not Included

#50209



#50199

#50211 - 25 OZ. BRÜMATE WINESULATOR™

#50226 - 25 OZ. BRÜMATE WINESULATOR™

- Made Of Stainless Steel • Powder Coated Finish
- BevGuard™ Insulation For 24-Hour Temperature Retention
- Screw-On, Spill Resistant Lid
- Holds Full Bottle Of Wine Or 750 ML Of Your Favorite Beverage
- 100% Leakproof • Glass-Free Zone Friendly
- Non-Slip Base • Meets FDA Requirements • BPA Free
- Hand Wash Recommended
- See #50226 For More Color Options..

#50209 - 50 OZ. BRÜMATE TOGOSA

- Made Of Stainless Steel • Powder Coated Finish
- BevGuard™ Insulation For Keeping Your Drink Cold For 48+ Hours And Hot For 4 Hours
- Screw-On Tritan™ Spill Resistant Lid
- Versatile Bottle Chiller And Leakproof Pitcher Combo
- Includes Two Lids For Seamless Transformation From Chiller Into A Drink Pitcher
- Securely Fits Most Wine, Champagne & Liquor Bottles
- Built-In 100% Leakproof Strainer • Chiller Lid Locks Bottles In
- No Metallic Taste • Meets FDA Requirements • BPA Free
- Hand Wash Recommended

#50199 - 14 OZ. BRÜMATE UNCORK'D XL

#50220 - 14 OZ. BRÜMATE UNCORK'D XL

- Made Of Stainless Steel
- BevGuard™ Insulation For Keeping Your Drink Cold For 12 Hours And Hot For 3 Hours
- Screw-On, BevLock™ Spill Resistant Lid
- Holds A Half Bottle Of Wine Or 375 ML Of Your Favorite Beverage
- Non-Slip Base • No Condensation • Meets FDA Requirements
- BPA Free • Hand Wash Recommended
- See #50220 For More Color Options.



Standard Imprint Area



Optional Bottom Imprint



#50204 - 10 OZ. BRÜMATE MARGTINI

- Made Of Stainless Steel • Powder Coated Finish
- BevGuard™ Insulation For Keeping Your Drink Cold For 12 Hours
- Screw-On, Thumb Slide, Spill Resistant Splash-Proof Lid
- Two-In-One MargTini Tumbler Was Designed To Mimic Margarita And Martini Glasses With A Slim Rim Ensuring Maximum Sippability With The Durability Of Double-Walled Steel • Non-Slip Base • No Condensation
- Meets FDA Requirements • BPA Free • Hand Wash Recommended

#50203 - 8 OZ. BRÜMATE LIQUOR CANTEEN

- Made Of Stainless Steel • Powder Coated Finish
- Made For Portable Libations
- Self-Attached, Screw On, Spill-Resistant Lid
- Includes Non-Slip Silicone Cover • 100% Leakproof
- No Metallic Taste • Meets FDA Requirements
- BPA Free • Hand Wash Recommended



Back



Top



Straps Included

#35055 - 3 GAL. BRÜMATE BACKTAP™ COOLER

- Stainless Steel Lined Backpack Cooler • 7+ Day Ice Retention
- Holds 3 Gallons Of Your Favorite Beverage And Dispenses From The Built-In Tap
- Works As A Cooler And Holds 14 Slim Cans, 12 Standard Cans, Or 5 Bottles Of Wine And Ice
- Removable Stainless Steel Insert • Durable Rotomolded Design
- Tapback™ And Drinkready™ Tech • Leak-Resistant • Three Ways To Carry
- Includes Durable, Load-Lifting Backpack Straps



Swig Life™ Is A Certified Swam Owned Business And Women Owned

#55439 - 12 OZ. SWIG LIFE™ GOLF CAN COOLER

- Made Of Stainless Steel With Copper Plated Inner
- Triple Insulation Technology: Double-Walled, Vacuum-Sealed And Copper-Plated
- Keeps Drinks Cold For 9+ Hours And Hot For 3+ Hours
- Holds Most 12 Oz. Cans And Glass Bottles Including Beer, Soda And Sparkling Water
- Perfect For Golf Enthusiasts • Fits Most Standard Cup Holders
- Meets FDA Requirements • BPA Free • Dishwasher Safe

#55426 - 12 OZ. SWIG LIFE™ GOLF PARTEE SKINNY CAN COOLER

- Made Of Stainless Steel With Copper Plated Inner
- Patented Texture Finish
- Double Wall Construction For Insulation Of Hot Or Cold Liquids
- Keeps Drinks Cold For 9+ Hours And Hot For 3+ Hours
- Holds Most 12 Oz. Slim Can Beverages Including Hard Seltzers, Beer, Energy Drinks, Sodas And Sparkling Water
- Perfect For Golf Enthusiasts • Non-Slip Bottom
- No Condensation • Meets FDA Requirements
- BPA Free • Dishwasher Safe



#55437 - 12 OZ. SWIG LIFE™ SKINNY CAN COOLER

- Made Of Stainless Steel With Copper Plated Inner
- Triple Insulation Technology: Double-Walled, Vacuum-Sealed And Copper-Plated
- Keeps Drinks Cold For 9+ Hours And Hot For 3+ Hours
- Holds Most 12 Oz. Slim Cans Including Beer, Soda And Sparkling Water
- Fits Most Standard Cup Holders
- Meets FDA Requirements • BPA Free
- Dishwasher Safe

#55438 - 12 OZ. SWIG LIFE™ CAN COOLER

- Made Of Stainless Steel With Copper Plated Inner
- Triple Insulation Technology: Double-Walled, Vacuum-Sealed And Copper-Plated
- Keeps Drinks Cold For 9+ Hours And Hot For 3+ Hours
- Holds Most 12 Oz. Cans And Glass Bottles Including Beer, Soda And Sparkling Water
- Fits Most Standard Cup Holders
- Meets FDA Requirements • BPA Free
- Dishwasher Safe

#50055 - 12 OZ. SWIG LIFE™ FLIP + SIP TUMBLER

- Made Of Stainless Steel With Copper Plated Inner
- Double Wall Construction For Insulation Of Hot Or Cold Liquids
- Vacuum Insulated
- Screw On, Spill-Resistant Flip-Top Lid
- Keeps Drinks Cold Up To 9 Hours And Hot Up To 3 Hours
- Easy Carry Handle
- Non-Slip Bottom
- Condensation Free
- Meets FDA Requirements • BPA Free
- Dishwasher Safe



#50055



#50050

#50050 - 40 OZ. SWIG LIFE™ MUG

- Made Of Stainless Steel With Copper Plated Inner
- Stainless Steel Tumbler With Handle
- Double Wall Construction For Insulation Of Hot Or Cold Liquids
- Vacuum Insulated
- Snap On, Spill-Resistant Lid With Flexi-Straw
- Keeps Drinks Cold Up To 24 Hours And Hot Up To 9 Hours
- Non-Slip Bottom • Condensation Free
- Meets FDA Requirements • BPA Free
- Dishwasher Safe

OTTERBOX



#50072

**#50072 - 28 OZ. OTTERBOX® ELEVATION®
SPORTS BOTTLE**

- Stainless Steel Outer And Inner With Copper Lining
- Self-Attached, Spill-Resistant Flip Top Lid With Straw
- Meets FDA Requirements
- BPA Free
- Hand Wash Recommended



#50073

#50073 - 12 OZ. OTTERBOX® ELEVATION® CAN COOLER

- Made Of Stainless Steel With Plastic Inner
- Insulated
- Holds Most 16 Oz. Cans Or 12 Oz. Slim Cans
- Sweat-Resistant Design
- Fits Most Standard Cup Holders
- Meets FDA Requirements
- BPA Free
- Hand Wash Recommended



#35088



#35091



#35089

#35088 OTTERBOX® ICEBERG CUBE COOLER

- Made Of Durable 150D Ripstop Polyester
- FDA Food-Grade • BPA Free Liner
- Water-Resistant Zipper • Built In Handles
- Optional With Comfort Grip
- Icepack And Bottle Opener Included
- Carries 24 Cans Of Your Favorite Beverage
- Keeps Ice Up To Two Days
(When Cooler Is Pre-Chilled And Packed With Ice)

#35091 OTTERBOX® ICEBERG LUNCHBOX COOLER

- Made Of 150D Ripstop Polyester
- FDA Food Grade
- BPA Free Liner
- Water-Resistant Zipper
- Icepack Included
- Carries 6 Cans Of Your Favorite Beverage
- Keeps Ice Up To Two Days
(When Cooler Is Pre-Chilled And Packed With Ice)

#35089 OTTERBOX® ICEBERG TOTE COOLER

- Made Of 150D Ripstop Polyester
- Water-Resistant Zipper
- Detachable/Adjustable Shoulder Strap
- Top Carry Handles With Comfort Grip
- Double Zippered Main Compartment
- Exterior Slip Pockets
- Icepack And Bottle Opener Included
- Carries 24 Cans • Keeps Ice Up To Two Days
(When Cooler Is Pre-Chilled And Packed With Ice)



#94041



#94041 OTTERBOX® 5,000 MAH 3-IN-1 MOBILE CHARGING KIT

- 3-In-1 Cable Features Nearly Limitless Compatibility, Charging A Variety Of Your Favorite Devices Including Apple® (Mfi Approved), Samsung, LG, Google And More
- Ultra Slim, Highly Mobile Design Perfect For Travel, Tight Pockets And On-The-Go Adventures
- Includes Mobile Power Bank And 3-In-1 Cable With USB-A To Micro-USB With USB-C And Apple® Lightning® Adapters
- 5,000 mAh Lithium Battery Capacity For Quick And Portable Power
- LED Power Indicator Displays Charging Status And Current Battery Life.
- Apple® and Lightning® are trademarks of Apple Inc., registered in the U.S. and other countries.
- Samsung is a registered trademark of Samsung Group, registered in the U.S. and other countries.

#94043 OTTERBOX® 3,000 MAH WIRELESS POWER BANK FOR MAGSAFE

- Designed For Seamless Interaction With iPhones With MagSafe® Technology
- Strong Magnetic Alignment And Attachment
- Slim, Sleek Design For 7.5W Wireless Charging Anywhere
- Portable, Magnetic 3,000 mAh Battery Extends The Life Of Your Phone
- LED Power Indicators Display Charge Status And Battery Life
- Dual Direction USB-C Port Enables Use As A Standalone Power Bank
- Durable Design Engineered With Trusted Drop Protection
- Apple® And MagSafe® Are A Trademark Of Apple Inc., Registered In The U.S. And Other Countries.



#94043



**#9185 POWERSTICK ALTO MINI SPEAKER
& WIRELESS EARBUD COMBO**

- 5W Speaker With Passive Radiator
- Buttons For Next/Prev/Vol. Up/
Vol. Down/Answer/Hang-up
- Strap For Attaching
- USB-C Port To Recharge
- Rubber Feet
- Wireless TWS Earbuds
- 6 Hours Of Continuous Audio Playback
- Noise Isolating Earbuds
- Specially Tuned Anterior Air Vents
- Advanced Hi-Fi Audio Decoder
& 8mm Moving Coil Unit
- Multi-Function Touchpad
- Activate Voice Assistant (Siri/Google)
- Recharge Earbuds In Alto Compartment
- Standard Pricing Includes Full Color
Imprint In Two Locations On Alto Speaker
- Optional Imprint On Earbuds Must Be
The Same Logo



#9185

Optional Imprint On Earbuds

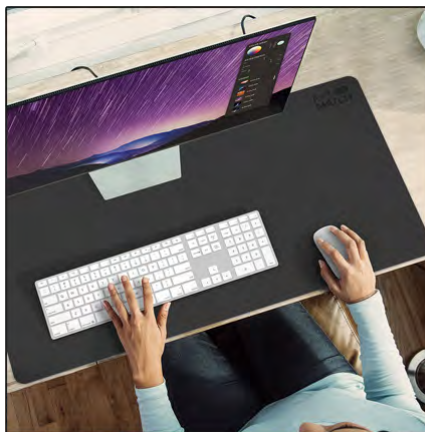


#9159 POWERSTICK ZOOM KIT

- Includes Aura Clip-On Ring Light &
Camera Cover And Powerstand
- Micro USB To USB Cable Included
- Standard Pricing Includes Full
Color Imprint On Both Items

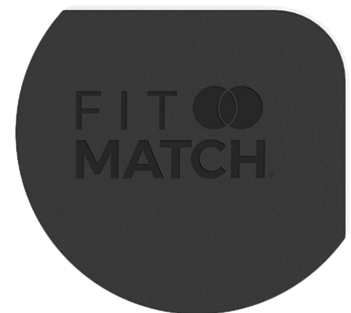
#9176 POWERSTICK DESKSHIELD

- Made Of Durable PU Leather
- Large Desk Coverage
- Use As A Mouse Pad
- Easy To Clean



Keyboard Not Included

Standard Imprint On Top Right Corner



Phone Not Included

#9178 POWERSTICK CLEARCHARGE

- Charge Compatible Devices Wirelessly
- Elegant Modern Design
- LED Lights Illuminate As It Charges
- Laser Etched Logo
- USB-C Cable Included
- Perfect Award Or Commemorative Gift



#94066 POWERSTICK 20W POWERUSB

- Features USB-C and USB-A AC Adapter
- Input: 100-240 Volts
- Output: 20W Max
- Compact Design With Folding Prongs
- Charge Up To Two Devices Simultaneously
- Requires Your Phone's Charging Cord To Charge Your Device



#94067 POWERSTICK POWERTRIP CLASSIC

- 6,400 mAh Lithium Ion Battery
- Features USB-C and USB-A AC Adapter
- Input: 100-240 Volts
- Output: USB-A 5V/3A, USB-C 5V/3A
- Charge Up To Two Devices Simultaneously
- Compact Design With Folding Prongs
- 3 Methods To Recharge
- Solar Panel Provide An Emergency Trickle Charge
- LCD Screen Displays Battery Status
- Requires Your Phone's Charging Cord To Charge Your Device

#94064 POWERSTICK SPOTX

#94064 POWERSTICK SPOTX

- Wireless Two-Way Finder Featuring Bluetooth® 5.2 Technology
- Attach The SpotX To Keys, Purse, Etc.
- The Network Of Spot Users Can Help Find It, Two-Way Finding Helps Locate Your Spot And/Or Phone, Range Of 200 Ft.
- Location History Will Map The Last Location SpotX Was Together With Your Phone
- Out of Range Alerts Will Sound An Alert From Your Phone When SpotX Gets Too Far
- Proximity Meter Is An Indicator Of The Connected Signal Strength Shown By Yellow Rings, Mark As Lost If A Spot Is Lost & Shows Disconnected
- Ring To Find Sounds An Alert From SpotX
- Features A Replaceable Cell Battery
- Compatibility: iOS 8.0 or Later & Android 4.3 OS or Later
- Free App For iOS And Android Devices



Phone Not Included



#94065 POWERSTICK POWERTAG

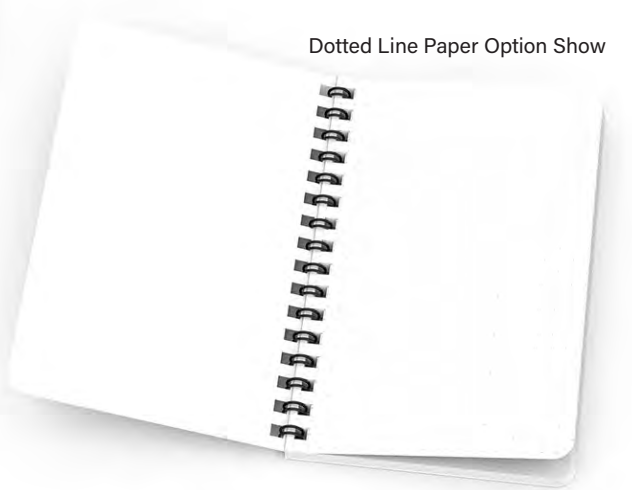
- Wireless Two-Way Finder Featuring Bluetooth® 5.2 Technology
- Attach The PowerTag Finder To Keys, Purse, Etc.
- Two-Way Finding Helps Locate Your PowerTag And/Or Phone
- Out of Range Alerts Will Sound An Alert From Your Phone When PowerTag Gets Too Far
- Location History Will Map The Last Location PowerTag Was Together With Your Phone
- Ring To Find Sounds An Alert From PowerTag
- Features a Replaceable Cell Battery
- Free App For iOS And Android Devices
- Compatibility: iOS 8.0 or Later & Android 4.3 OS or Later
- Works With Apple's Find My App



#94070 POWERSTICK ACORN SIDE BOUND NOTEBOOK

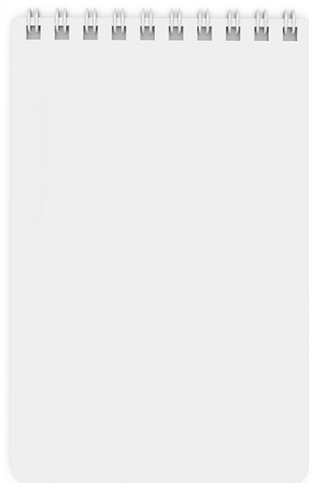
- 50 Page Notebook With Side Spiral
- Choose Blank, Dotted Or Lined Paper
- White Or Black Metal Coil Binding
- Interior: 120 GSM Ultra Smooth & Brilliantly White
- Cover: 260 GSM With Velvet-Like Soft Touch Lamination
- Price Includes Full Color Imprint In One Location.

Dotted Line Paper Option Show



#94071 POWERSTICK ACORN TOP BOUND NOTEBOOK

- 50 Page Notebook With Top Spiral
- Choose Blank, Dotted Or Lined Paper
- White Or Black Metal Coil Binding
- Interior: 120 GSM Ultra Smooth & Brilliantly White
- Cover: 260 GSM With Velvet-Like Soft Touch Lamination
- Price Includes Full Color Imprint In One Location.

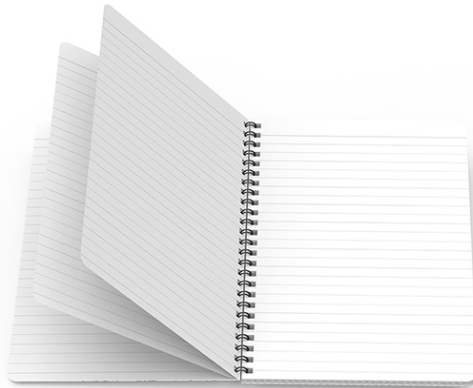


Blank Paper Option Shown.

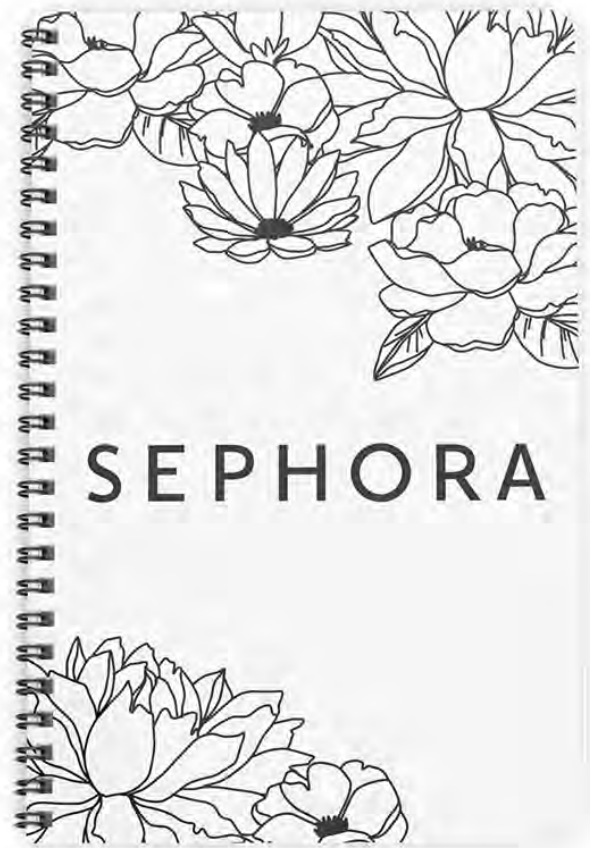


#94072 POWERSTICK WILLOW SIDE BOUND NOTEBOOK

- 50 Page Notebook With Side Spiral
- Choose Blank, Dotted Or Lined Paper
- White Or Black Metal Coil Binding
- Interior: 120 GSM Ultra Smooth & Brilliantly White
- Cover: 260 GSM With Velvet-Like Soft Touch Lamination
- Price Includes Full Color Imprint In One Location.



Lined Paper Option Shown.



#94073 POWERSTICK WILLOW TOP BOUND NOTEBOOK

- 50 Page Notebook With Top Spiral
- Choose Blank, Dotted Or Lined Paper
- White Or Black Metal Coil Binding
- Interior: 120 GSM Ultra Smooth & Brilliantly White
- Cover: 260 GSM With Velvet-Like Soft Touch Lamination
- Price Includes Full Color Imprint In One Location.



Phone Not Included



#94069 POWERSTICK SCREENCLEAN

- Made Of ABS And Microfiber
- Compact Spray Bottle With Built-In Microfiber Sides
- Refillable Bottle Can Be Filled With Your Favorite Screen Cleaning Solution
- Fine Mist Spray
- Cleaning Liquid Not Included
- Price Includes Full Color Imprint In One Location.



#94068 POWERSTICK POWERSWITCH

- Made Of ABS And Metal
- Relieve Anxiety & Reduce Stress
- Provides Sensory Stimulation
- 2 Different Clicking Sensations
- Endlessly Reusable
- Washable
- Split Ring Not Included
- Price Includes Full Color Imprint In One Location.





#9164 POWERSTICK CLEARPAD GLOW

- 5 LED Cool/White Lights Powered By USB Power Source Or By Internal Battery For Up To Two Hours
- Take Notes & Make Lists
- Display An Inspirational Quote
- Endlessly Reusable
- Sleek Desktop Item
- Includes White Chalk Marker
- Easily Wipes Clean
- Includes Branding On Base
- Padded Feet Protect The Desk Or Table Top Surface
- Price Includes Full Color Imprint In One Location.

Phone Not Included



#2770 POWERSTICK MINISTAND

- Portable Size
- Foldable & Lightweight
- Compatible With Most Phones & Cases
- Supports Devices In Portrait Or Landscape Orientation
- Price Includes Full Color Imprint In One Location.



#9167 POWERSTICK SPOTSCOUT

- Two-Way Tracking To Locate Your Phone And/Or Spotscout Device
- Features Bluetooth® 5.2 Technology
- Find Mode Sounds An Alarm From The Spotscout Device To Locate It
- Connects Up To 200 Ft. From Your Phone or Tablet
- Includes A Silicone Loop To Conveniently Connect To A Personal Item
- Find Mode Can Also Map Your Last Paired Location
- Tether Mode Can Send An Alert Before You Leave Behind Important Items
- Search Party Is A Lost And Found Community For Spot Users
- Connect And Manage Up To Four Spotscout Devices
- Replaceable Battery
- Compatibility: Minimum iOS 13.0 or Later & Android 5.0 OS or Later
- Free App For iOS And Android Devices
- The Bluetooth® word mark and logos are registered trademarks owned by the Bluetooth SIG, Inc. and any use of such marks by Hit Promotional Products, Inc. is under license. Other trademarks and trade names are those of their respective owners.
- Price Includes Full Color Imprint In One Location.



#9177 POWERSTICK SLICE AND SERVE

- 100% Canadian Maple Cutting Board (9" X 12")
- Serving Tray
- Juice Groove
- Juice Reservoir Or Designated Spot For A Dish
- Lift Finger Notches





**#1306 POST-IT® 4" X 3" FULL COLOR
RECYCLED NOTES – 25 SHEETS**

- 25 Adhesive Sheets Per Note Pad
- Adhesive Side: 4" Edge
- Made With Recycled Paper
- Made In USA
- Standard Pricing Includes Full Color Imprint In One Location.



#1306



#1307

**#1307 POST-IT® 4" X 3" FULL COLOR
RECYCLED NOTES – 50 SHEETS**

- 50 Adhesive Sheets Per Note Pad
- Adhesive Side: 4" Edge
- Made With Recycled Paper
- Made In USA
- Standard Pricing Includes Full Color Imprint In One Location.



STORMTECH®

nurtured by nature

#KXV1W STORMTECH® NAUTILUS WOMEN'S QUILTED VEST

#KXV1 STORMTECH® NAUTILUS MEN'S QUILTED VEST

- (Shell) 100% Polyester Pongee, 2.65 oz/yd2 (USA) / 90gsm (CDN); (Lining) 100% Polyester
- D/W/R Outer Shell • PFC-Free Water Repellent Finish
- Quilted Body With Ultra Soft Lining
- Internal Full-Length Stormflap • Adjustable Hem
- Zippered Pockets • Chin Saver • Decoration Access



#KXV1W

#KXV1

#BRX1 STORMTECH® NARVIK MEN'S HYBRID JACKET

#BRX1W STORMTECH® NARVIK WOMEN'S HYBRID JACKET

- (Shell) 100% Nylon, 1.12 oz/yd2 (USA) / 38gsm (CDN); (Shell-Secondary) 100% Polyester Two Tone Melange Fleece, 10.91 oz/yd2 (USA) / 370gsm (CDN)
- D/W/R Outer Shell • PFC-Free Water Repellent Finish
- Knit Collar and Sleeves • Internal Full-Length Stormflap
- Quilted Thermal Shell • Zippered Handwarmer Pockets
- Chin Saver • Articulated Action Shoulders
- Adjustable Hem With Drawcord • Decoration Access



#BRX1

#BRX1W



#KS3W STORMTECH® GREENWICH WOMEN'S LIGHTWEIGHT SOFTSHELL

- 100% Polyester Interlock Bonded With 100% Polyester Birdseye Mesh, 5.90 oz/yd2 (USA) / 200gsm (CDN)
- STORMTECH H2XTREME® 10000/3000 Waterproof / Breathable Outer Shell
- PFC-Free Waterproof/Breathable Bonded Shell
- Reflective Trim • Internal Pocket • Audio Port



#TMX1 STORMTECH® OZONE MEN'S HOODED SHELL

- 100% Polyester, 1.92 oz/yd2 (USA) / 65gsm (CDN)
- D/W/R Outer Shell • PFC-Free Water Repellent Finish
- Articulated Action Shoulders • Scuba Hood
- Contoured Hem • Packs Into Self-Pocket



#SFX1 STORMTECH® LOGAN MEN'S SNAP FRONT SHIRT

- 60% Cotton/40% Polyester Single Dyed Twill Check, 4.57 oz/yd2 (USA) / 155gsm (CDN)
- Full Front Snap Closure
- Cuff Placket With Snaps
- Chest Pocket Flaps With Snaps
- Contoured Hem



#MX2W STORMTECH® IMPACT WOMEN'S MICROFLEECE JACKET

- 100% Polyester Fleece, 5.60 oz/yd2 (USA) / 190gsm (CDN)
- Chin Saver • Brushed Tricot Hand Warmer Pockets



#HTZ1 STORMTECH® BASE MEN'S THERMAL ZIP

- 95% Polyester/5% Spandex Drop Needle Double Knit Fleece, 7.08 oz/yd2 (USA) / 240gsm (CDN)
- STORMTECH® H2X-DRY® Moisture Management
- Snag Resistant Fabric • Contour Side Panels
- Reverse Coil Front 1/4 Zipper • Contrast Cover Stitching



#FHZ1 STORMTECH® AVALANTE MEN'S FULL ZIP FLEECE JACKET

- 75% Recycled Polyester/25% Polyester Fleece, 9.44 oz/yd2 (USA) / 320gsm (CDN)
- Pure Earth By STORMTECH®
- Ultra Soft Sweater Knit Fleece With Brushed Interior
- Brushed Tricot Lined Collar/Cuff/Hem
- Zippered Chest Pocket
- Zippered Hand Warmer Pockets
- Raglan Sleeves
- Color Matched Trim
- Flatlock Seams
- Low-Profile Chin Saver



#GBW1M



#MCX1



#PTR1

#GBW1M STORMTECH® ATLANTIS WATERPROOF GEAR BAG - MEDIUM

- 100% PVC • Fully Adjustable Padded Shoulder Straps
- Large Zippered Flap Opening to Main Compartment
- Large Inside Zip Mesh Pocket • ID Pocket
- Additional Handles On Each End
- Spot Clean/Air Dry

#MCX1 STORMTECH® OASIS 24 PACK COOLER BAG

- (Shell) 100% Polyurethane; (Shell - Secondary) 100% PVC; (Lining) PVC And Polyester
- Durable Reinforced Fabric • Large Main Zippered Opening
- External Pocket • Carry Handles With Comfort Grip
- Fully Leak-Proof Insulated Lining
- Easy Clean Food Safe Lining
- Use With STORMTECH Ice Pack
- Spot Clean/Air Dry

#PTR1 STORMTECH® SARGASSO BACKPACK

- 100% Polyester PVC Coated • Waterproof Fabric
- Roll-Top Closure With Adjustable Straps
- External Zippered Pocket • Reinforced Carry Handle
- Ergonomic Adjustable Shoulder And Sternum Strap
- Back Padding With Breathable Mesh • Internal Zippered Pocket
- Volume: 20 Liters/1220 Cubic Inches
- Spot Clean/Air Dry



#35102

#35102 TUMI CORPORATE COLLECTION WOMEN'S DUFFEL

- Made Of Ballistic Nylon
- Quickly And Easily Add Another Travel Piece With The Add-A-Bag Strap
- Exterior Double Zip Entry To Main Compartment
- Exterior Front U Zip Pocket
- Exterior Quick Access Phone Pocket
- Exterior Removable Adjustable Webbing Shoulder Strap
- Exterior Webbing Top Handles With Leather Keeper
- Interior Zip Pocket
- Interior Pen Pocket
- Interior Media Pockets
- TUMI Tracer®
- Spot Clean/Air Dry

#35103 TUMI ALPHA BRAVO CLASSIFIED WAIST PACK

- Made Of Ballistic Nylon
- Exterior Zip Entry To Main Compartment
- Interior Two Card Pockets
- Interior Two Media Pockets
- Interior Key Leash
- Interior Pen Holders
- TUMI Tracer®
- Spot Clean/Air Dry



#35103

Cord Not Included



**#35081 TUMI 19 DEGREE CONTINENTAL
EXPANDABLE 4-WHEELED CARRY ON**

- Made Of Polycarbonate
- Anti-Microbial Treated Shell And Zippers And Grab Handles (The Anti-Microbial Solutions Do Not Protect The Users Or Others Against Bacteria, Viruses, Germs, Or Other Disease Organisms.)
- Exterior Zip Entry To Main Compartment
- Exterior Built-In USB Port
- Exterior Integrated TSA Lock
- Exterior Retractable Top And Side Carry Handles
- Exterior Bottom Grab Handle
- Exterior 3-Stage Telescoping Handle
- Exterior Zipper Expansion
- Exterior 4 Recessed Dual Spinner Wheels
- Exterior Luggage Tag
- Interior Zip Pockets
- Interior Dual-Compartment Zip Pocket
- Interior Compression Straps
- Interior TUMI Tracer®
- Spot Clean/ Air Dry bullet



#35081



#35080

#35080 TUMI CELINA BACKPACK

- Made Of Nylon
- Quickly And Easily Add Another Travel Piece With The Add-A-Bag Strap
- Exterior Zip Entry To Padded Laptop Compartment (Fits Up To A 15" PC Or 16" Macbook Screen)
- Exterior Leather Top Handle
- Exterior Front U-Zip Pocket
- Exterior 2 Front Zip Pockets
- Exterior Front Zip Entry To Main Compartment
- Exterior Side Zip Pocket
- Exterior Padded Adjustable Backpack Straps With D-Ring & Loop
- Exterior Side Double-Zip Water-Resistant Water Bottle Pocket
- Exterior Quick-Access Phone Pocket With Detachable Leather Charm
- Interior Zip Pocket
- 2 Interior Media Pockets
- Interior Leather Card Pocket
- Interior Open Pocket
- Interior Leather Pen Loop
- Interior Key Leash
- Interior TUMI Tracer®
- Spot Clean/Air Dry



#35101



Store In Zippered Pouch

#35101 TUMI CORPORATE COLLECTION JUST IN CASE TOTE BAG

- Made Of Ballistic Nylon
- Quickly And Easily Add Another Travel Piece With The Add-A-Bag Strap
- Exterior Double-Zip Entry To Main Compartment
- Exterior Open Pocket • Exterior Shoulder Straps
- Exterior Zip Pouch With Snaps That Attach To Bag Interior
- Interior Snaps To Attach Pouch
- Spot Clean/Air Dry

#35100 TUMI CORPORATE COLLECTION CROSSBODY

- Made Of Ballistic Nylon
- Quickly And Easily Add Another Travel Piece With The Add-A-Bag Strap
- Exterior Double-Zip Entry To Main Compartment
- Exterior Front U Zip Pocket
- Exterior Adjustable Webbing Crossbody Strap
- Interior Zip Pocket • Interior Zip Pocket • Interior Pen Pocket
- Interior Media Pockets
- TUMI Tracer®
- Spot Clean/Air Dry



#35100



#35082



#35082 TUMI ALPHA DOUBLE EXPANSION TRAVEL SACHEL

- Made Of Ballistic Nylon
- Quickly And Easily Add Another Travel Piece With The Add-A-Bag Sleeve
- Exterior Zip Entry To Main Compartment
- Exterior Double Zip Three-Quarter Expansion
- Exterior Front U-Zip Pocket
- Exterior Front Slip Pocket With Magnetic Snap
- Exterior Leather-Wrapped Top Carry Handles
- Exterior Detachable Padded Shoulder Strap
- Interior Open Cavity Main Compartment
- Interior Media Pocket
- Interior Zip Pockets
- Interior Key Leash
- TUMI Tracer®
- Spot Clean/Air Dry

#35083 TUMI ALPHA PASSPORT COVER

- Made Of Ballistic Nylon
- Interior Passport Sleeve
- Interior Slip Pocket
- Spot Clean/Air Dry



#35083

Standard Imprint Area

Matador®



Built sustainably

Look for icons for Bluesign approved, post consumer recycled, and PFC free materials.



Carbonfund.org

Carbon neutral freight

We work with CarbonFund.org to make sure our offsets are making a difference. Our offsets are third-party certified, audited, and meet the standard of additionality.

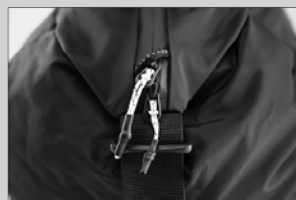


Designed in Boulder, CO

Headquarters powered by WindSource® renewable wind energy - certified by Green-e Energy.

#35086 MATADOR® REFRACTION PACKABLE BACKPACK

- Made Of 100D Recycled nylon, 100D Bluesign Span
- YKK® Zippers • Nylon Herringbone Webbing Throughout
- 210D Nylon Bonded Thread With Bartack Reinforced Construction
- 16 Liter Capacity • Stows Into Its Own Front Pocket For Travel
- Multiple Organization Pockets • Laptop Sleeve (Fits Up To 16" Macbook Pro)
- Expandable Water Bottle Pockets Built From Durable Materials
- Breathable Shoulder Straps • Baffled Zippers Protect From Weather
- Spot Clean/Air Dry



Extra Long Main Zippers Shown

#35085 MATADOR® REFRACTION PACKABLE DUFFEL BAG

- Made Of 100D Recycled Nylon, 100D Bluesign Span
- YKK® Zippers
- Nylon Herringbone Webbing Throughout
- 210D Nylon Bonded Thread With Bartack Reinforced Construction
- 25 Liter Capacity
- Stows In Its Own Front Pocket For Travel
- Built From Durable Materials
- Built In Adjustable Shoulder Strap
- Extra Long Main Zipper For Ease Of Access
- Anodized Aluminum Hardware
- Hidden Loops For Clipping On Accessories
- Additional Front Zipper Pocket Organization
- Spot Clean/Air Dry



Extra Long Main Zippers Shown

#35084 MATADOR® REFRACTION PACKABLE SLING

- Made Of 100D Recycled Nylon, 100D Bluesign Span
- YKK® Zippers
- Nylon Herringbone Webbing Throughout
- 210D Nylon Bonded Thread With Bartack Reinforced Construction
- 2 Liter Capacity
- Stows Into Its Own Front Pocket For Travel
- Built From Durable Materials
- Adjustable Hip/Crossbody Strap
- Multiple Organization Pockets
- External Phone Pocket On Back Hypalon Loop For Clipping On Accessories
- Baffled Zippers To Protect From Weather
- Spot Clean/Air Dry



USEFUL IS BETTER THAN WASTEFUL

- Made From Post Consumer Recycled Materials
- REPVE® Is The Global Leader In Recycled Performance Fibers. They Have Transformed Billions Of Recycled Materials Into More Sustainable Polyester Using Cutting-Edge Textile Technology.
- REPVE® Our Ocean™ Is A Premium Collection Of Fiber And Resin Sourced From Materials At High Risk Of Entering The Ocean.
- REPVE® Keeps Materials Out Of Landfills And Oceans, Conserves Electricity And Water And Reduces Greenhouse Emissions And Petroleum Use.
- Recycled Polyester (rPET) Is Obtained By Melting Down Existing Plastic Bottles And Other Material Sources To Create New Polyester Fiber.
- This Material Is Recyclable In Limited Facilities In The US. Consumers Should Check Their Local Recycling Capacities Before Placing In Their Recycling Bins.

#35093 REPVE® RPET BACKPACK

- Shoulder Strap, Elastic Pockets, Zipper, Handles And Buckle Are Not rPET
- Zippered Main Compartment
- Front Zippered Pocket
- Adjustable Shoulder Strap
- Web Carrying Handles
- Side Mesh Pockets
- Laptop Pocket Inside
- Accommodates Most Laptops Up To 14"
- Spot Clean/Air Dry



#35093



#30091

#30091 REPVE® RPET TOTE BAG

- Zipper, Handles, Shoulder Strap, Side Pockets Are Not rPET
- Front Zippered Pocket
- Interior Slip Pocket • Side Mesh Pocket
- Trolley Strap
- Detachable/Adjustable Shoulder Strap
- Web Carrying Handles • Spot Clean/Air Dry



#35094

#35094 REPVE® RPET COOLER LUNCH BAG

- Lining, Shoulder Strap, Elastic Pockets, Zipper, Handles And Buckle Are Not rPET
- 12C Silver PEVA Lining With 4MM PE Foam
- Zippered Main Compartment
- Adjustable Shoulder Strap
- Side Mesh Pockets
- Holds Up To 6 Cans • Spot Clean/Air Dry

MEGATM BRITE

MEGA Colors • MEGA Billboard • MEGA Impact

Maximize your imprint space with full color, edge-to-edge print.

Available on a variety of items and product categories.

Visit our website for more details.



#55791



#55806



#550077

#55791 - 20 OZ. FULL COLOR MARSHLAND CAMO HIMALAYAN TUMBLER

- Stainless Steel Outer And Inner
- Double Wall Construction For Insulation Of Hot Or Cold Liquids
- Snap-On, Spill-Resistant Thumb-Slide Lid With Rubber Gasket
- Keeps Drinks Hot Or Cold Up To 6 Hours
- Non-Slip Bottom
- Due To Vacuum Insulation Technology, Capacity Is 18 Oz. With Lid On
- Meets FDA Requirements • BPA Free
- Hand Wash Recommended

#55806 - 24 OZ. FULL COLOR COLMA BASICS TUMBLER

- Stainless Steel Outer And Inner
- Double Wall Construction For Insulation Of Hot Or Cold Liquids
- Snap-On, Spill-Resistant Flip Top Lid with Straw Hole and Matching 9 1/2" Straw
- Due to Vacuum Insulation Technology, Capacity Is 22 Oz. With Lid On
- Non-Slip Bottom
- Meets FDA Requirements
- BPA Free
- Hand Wash Recommended

#550077 - 40 OZ. FULL COLOR NAOMI INTREPID STAINLESS STEEL TUMBLER

- Stainless Steel Outer And Inner
- Double Wall Construction For Insulation Of Hot Or Cold Liquids
- Keeps Drinks Cold Up To 24 Hours And Hot Up To 8 Hours
- Screw-On, Spill-Resistant Lid With Straw Hole And 12" Straw
- Vacuum Insulated
- Meets FDA Requirements
- BPA Free
- Hand Wash Recommended



#550046

#550046 - 30 OZ. FULL COLOR REYNOLDS STAINLESS STEEL TUMBLER

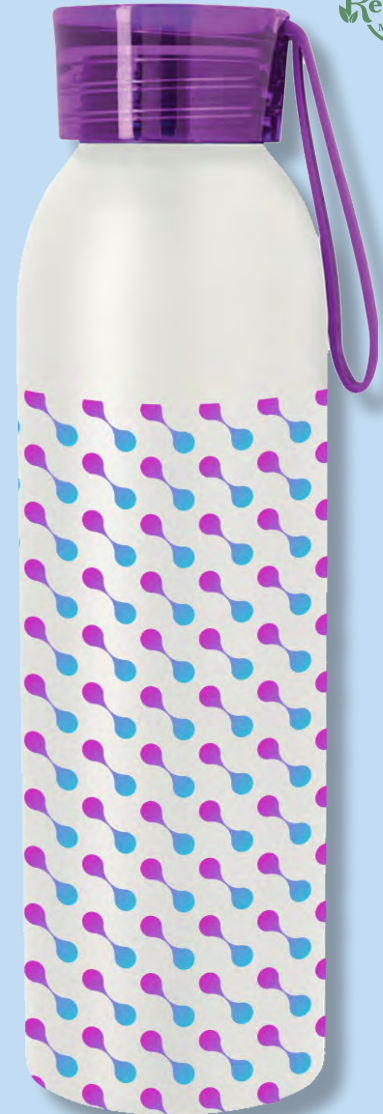
- Stainless Steel Outer And Inner
- Double Wall Construction For Insulation Of Hot Or Cold Liquids
- Screw-On, Spill-Resistant Thumb-Slide Lid
- Meets FDA Requirements
- BPA Free
- Hand Wash Recommended



#55706

#55706 - 16 OZ. FULL COLOR SWIGGY STAINLESS STEEL BOTTLE

- Stainless Steel Outer And Inner
- Double Wall Construction For Insulation Of Hot And Cold Liquids
- Screw On, Spill-Resistant Lid
- Wide Mouth Opening
- Keeps Drinks Cold Up To 24 Hours And Hot Up To 12 Hours
- Vacuum Insulated
- Meets FDA Requirements
- BPA Free
- Hand Wash Recommended



#55302

#55302 - 22 OZ. FULL COLOR DARBY ALUMINUM BOTTLE

- Screw-On, Spill-Resistant Lid
- Wide Mouth Opening
- Easy Carry Handle
- Lids Packed Separately and Unassembled
- Meets FDA Requirements
- BPA Free
- Hand Wash Recommended



#550031



#550041



#550029

#550031 - 24 OZ. FULL COLOR STAINLESS STEEL LEIGHTON BOTTLE

- Stainless Steel Outer And Inner
- Powdered Coated Finish
- Double Wall Construction For Insulation Of Hot Or Cold Liquids
- Screw On, Spill-Resistant Sip Through Lid
- Wide Mouth Opening
- Easy Carry Handle
- Meets FDA Requirements
- BPA Free
- Hand Wash Recommended

#550041 - 20 OZ. FULL COLOR SERENA ALUMINUM BOTTLE

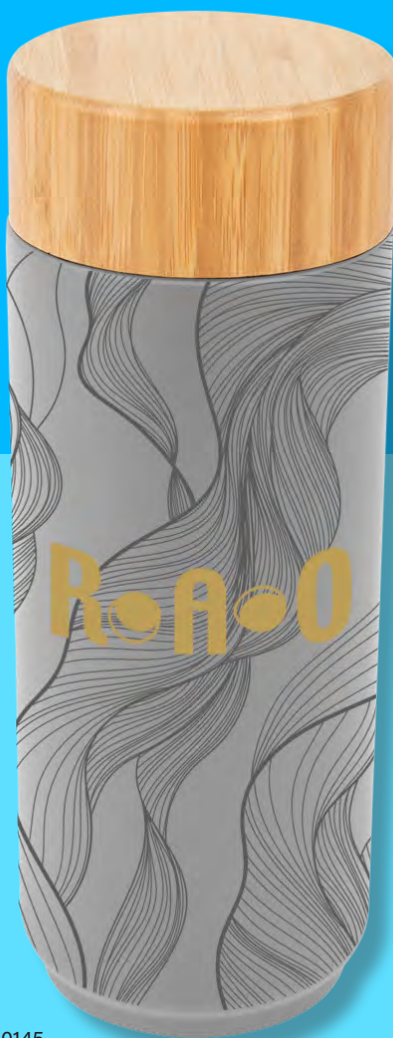
- Screw On, Spill-Resistant Lid
- Wide Mouth Opening
- Meets FDA Requirements
- BPA Free
- Hand Wash Recommended

#550029 - 24 OZ. FULL COLOR STAINLESS STEEL NEWCASTLE BOTTLE

- Stainless Steel Outer And Inner
- Single Wall Construction
- Screw On, Spill-Resistant Sip Top Lid
- Meets FDA Requirements
- BPA Free
- Hand Wash Recommended



#550037



#550145



#55940



#550037 - 27 OZ. FULL COLOR ROANOKE STAINLESS STEEL BOTTLE

- Stainless Steel Outer and Inner
- Double Wall Construction For Insulation Of Hot Or Cold Liquids
- Screw On, Spill-Resistant Flip-Top Lid With 9" Straw
- Meets FDA Requirements
- BPA Free
- Hand Wash Recommended

#550145 - 16 OZ. FULL COLOR STAINLESS STEEL LEXINGTON BOTTLE WITH BAMBOO LID

- Stainless Steel Outer And Inner
- Double Wall Construction For Insulation Of Hot Or Cold Liquids
- Screw On, Spill-Resistant Lid
- Wide Mouth Opening
- Meets FDA Requirements
- BPA Free
- Hand Wash Recommended

#55940 - 25 OZ. FULL COLOR BROOKS BOTTLE

- Made With PET Material
- Screw On, Spill-Resistant Sip Top Lid
- Easy Carry Handle
- Lids Packed Separately And Unassembled
- Made In The USA
- Meets FDA Requirements
- BPA Free
- Hand Wash Recommended



#22418

#22418 HARVEST LUNCH SET WITH FULL COLOR LID

- Features Full Color Edge-To-Edge Graphics On Lid
- Includes Fork and Knife
- Eliminates The Use Of Disposable Plastic Utensils And Containers
- Small Amounts Of Plant-Based Material Are Used To Create A Flecked Finish
- No Indication Of Extractable Gluten In Testing
- Microwave Safe • Meets FDA Requirements
- BPA Free • Hand Wash Recommended



#1913

#1913 FULL COLOR ORNAMENT TIN WITH CANDY

- Features Full Color Edge-To-Edge Graphics On Lid
- Round Ornament Tin With Your Choice Of Filler
- Includes Ribbon For Hanging
- Please See Our Website For Fill Options
- Stock design shown: UGLY SWEATER 4
- Fill Shown: Starlite Peppermint



Stock design shown: Snowman



#56223



#56287



#56223 FULL COLOR MALIBU SUNGLASSES

- Made Of ABS-PMMA Material
- UV400 Lenses Provide 100% UVA And UVB Protection
- Standard Pricing Includes 4-Color Process Imprint On Both Arms
- Some Colors Offered Made From Recycled Materials.
Please See Our Website For Color Options.

#56287 FULL COLOR COLORBLOCK MALIBU SUNGLASSES

- Made Of ABS-PMMA Material
- UV400 Lenses Provide 100% UVA And UVB Protection
- Standard Pricing Includes 4-Color Process Imprint On Both Arms

MEGA LASER



#501150

#501150 - 18 OZ. FULL LASER DAVENPORT STAINLESS STEEL BOTTLE

- Stainless Steel Outer And Inner
- Double Wall Construction For Insulation Of Hot Or Cold Liquids
- Wide Mouth Opening As Inner Lid And Spill-Resistant Outer Cap With Easy Carry Handle
- Meets FDA Requirements • BPA Free • Hand Wash Recommended



#56330

#53810 - 17 OZ. FULL LASER BLAIR STAINLESS STEEL BOTTLE

- Stainless Steel Outer And Inner • Smooth Rubberized Finish
- Double Wall Construction For Insulation Of Hot Or Cold Liquids
- Screw On, Spill-Resistant Lid • Wide Mouth Opening
- Meets FDA Requirements • BPA Free
- Hand Wash Recommended



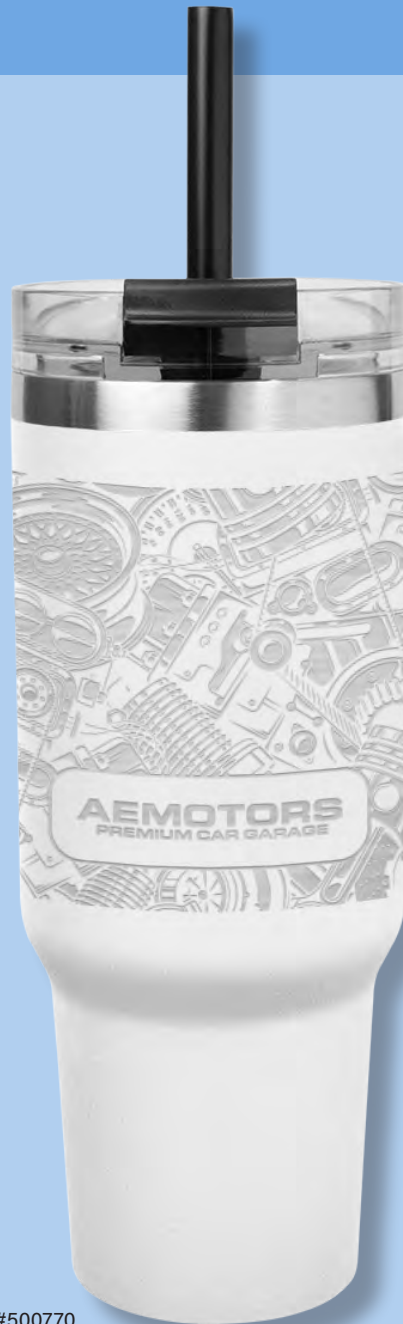
#53810

#56330 - 21 OZ. FULL LASER TIPTON STAINLESS STEEL BOTTLE WITH BAMBOO LID

- Stainless Steel Inner and Outer
- Double Wall Construction For Insulation Of Hot Or Cold Liquids
- Screw On, Spill-Resistant Lid
- Wide Mouth Opening
- Vacuum Insulated • Easy Carry Handle
- Meets FDA Requirements
- BPA Free • Hand Wash Recommended



#501500



#500770

#501500 - 26 OZ. FULL LASER WILDER STAINLESS STEEL BOTTLE

- Stainless Steel Outer and Inner
- Double Wall Construction For Insulation Of Hot Or Cold Liquids
- Screw-On, Spill-Resistant Push Button To Pop Lid
- Meets FDA Requirements • BPA Free
- Hand Wash Recommended

#500770 - 40 OZ. FULL LASER NAOMI INTREPID STAINLESS STEEL TUMBLER

- Stainless Steel Outer And Inner • Powder Coated Finish
- Double Wall Construction For Insulation Of Hot Or Cold Liquids
- Screw-On, Spill-Resistant Lid with Straw Hole and 12" Straw
- Keeps Drinks Cold Up To 24 Hours And Hot Up To 8 Hours
- Vacuum Insulated • Meets FDA Requirements
- BPA Free • Hand Wash Recommended



#56140



#57900



#57530

#56140 - 16 OZ. FULL LASER WELLINGTON STAINLESS STEEL TUMBLER

- Stainless Steel Outer and Inner
- Double Wall Construction For Insulation Of Hot Or Cold Liquids
- Screw On, Spill-Resistant Lid
- Keeps Drinks Cold Up To 24 Hours and Hot Up to 12 Hours
- Vacuum Insulated
- Cork-Look Rubberized Base Protects Surfaces From Heat And Scratches
- Meets FDA Requirements • BPA Free • Hand Wash Recommended

#57900 - 20 OZ. FULL LASER HIMALAYAN TUMBLER

- Stainless Steel Outer And Inner
- Double Wall Construction For Insulation Of Hot Or Cold Liquids
- Snap-On, Spill-Resistant Thumb-Slide Lid With Rubber Gasket
- Due To Vacuum Insulation Technology, Capacity Is 18 Oz. With Lid On
- Keeps Drinks Hot Or Cold Up To 6 Hours • Non-Slip Bottom
- Meets FDA Requirements • BPA Free • Hand Wash Only

#57530 - 20 OZ. FULL LASER TWO-TONE HIMALAYAN TUMBLER

- Stainless Steel Outer And Inner • Powder Coated Finish
- Double Wall Construction For Insulation Of Hot Or Cold Liquids
- Snap-On, Spill-Resistant Thumb-Slide Lid With Rubber Gasket
- Due To Vacuum Insulation Technology, Capacity Is 18 Oz. With Lid On
- Keeps Drinks Hot Or Cold Up To 6 Hours • Non-Slip Bottom
- Meets FDA Requirements • BPA Free • Hand Wash Recommended



#501270

#501270 - 18 OZ. FULL LASER SIENNA STAINLESS STEEL BOTTLE

- Stainless Steel Outer And Inner
- Double Wall Construction For Insulation Of Hot Or Cold Liquids
- Screw On, Spill-Resistant Flip-Top Lid
- Wide Mouth Opening
- Meets FDA Requirements
- BPA Free
- Hand Wash Recommended



#56130



Can Not Included



#56130 - 2-IN-1 FULL LASER COPPER INSULATED BEVERAGE HOLDER AND TUMBLER

- Made Of Stainless Steel With Copper Plated Inner
- Double Wall Construction For Insulation Of Hot Or Cold Beverages For Hours
- Keeps Drinks Cold Up To 24 Hours And Hot Up To 6 Hours
- Includes Screw-On, Spill-Resistant Flip-Top Lid And Interchangeable Cooler Rim
- Fits Most 12 Oz. Cans, Standard Bottles And Automotive Drink Holders
- Vacuum Insulated Sweat-Proof Design
- Functions As A Tumbler And Can Cooler
- Replace the Cooler Rim With The Flip-Top Lid To Use As An 11 Oz. Tumbler
- Meets FDA Requirements
- BPA Free
- Hand Wash Recommended

DRINKWARE



#50075



#550035



#50078

#50075 - 40 OZ. JACKSON INTREPID STAINLESS STEEL TUMBLER

- Stainless Steel Outer And Inner With Handle
- Powder Coated Finish
- Double Wall Construction For Insulation Of Hot Or Cold Liquids
- Screw-On, Spill-Resistant Lid With Straw Hole And 12" Straw
- Keeps Drinks Cold Up To 24 Hours And Hot Up To 8 Hours
- Vacuum Insulated
- Meets FDA Requirements
- BPA Free
- Hand Wash Recommended

#550035 - 40 OZ. FULL COLOR INTREPID STAINLESS STEEL TUMBLER

- Stainless Steel Outer And Inner With Handle
- Double Wall Construction For Insulation Of Hot Or Cold Liquids
- Screw-On, Spill-Resistant Lid With Straw Hole And 12" Straw
- Keeps Drinks Cold Up To 24 Hours And Hot Up To 8 Hours
- Vacuum Insulated
- Meets FDA Requirements
- BPA Free
- Hand Wash Recommended

#50078 - 40 OZ. QUEST TUMBLER

- Stainless Steel Outer And Plastic Inner Liner With Handle
- Powder Coated Finish
- Double Wall Construction For Insulation Of Hot Or Cold Liquids
- Screw-On, Spill-Resistant Lid With Straw Hole And 12" Straw
- Meets FDA Requirements
- BPA Free
- Hand Wash Recommended



#50077



#50154

- #50077 - 40 OZ. NAOMI INTREPID STAINLESS STEEL TUMBLER
- Stainless Steel Outer And Inner • Powder Coated Finish
 - Double Wall Construction For Insulation Of Hot Or Cold Liquids
 - Screw-On, Spill-Resistant Lid With Straw Hole And 12" Straw
 - Keeps Drinks Cold Up To 24 Hours And Hot Up To 8 Hours
 - Vacuum Insulated
 - Meets FDA Requirements
 - BPA Free
 - Hand Wash Recommended
 - Stock design shown: PINKAWARENESS 29

- #50154 - 20 OZ. CAN SHAPED STAINLESS STEEL TUMBLER
- Stainless Steel Outer And Inner
 - Powder Coated Finish
 - Double Wall Construction For Insulation Of Hot Or Cold Liquids
 - Snap On, Spill-Resistant Double Wall Lid With 10" Straw
 - Vacuum Insulated
 - Silicone Flip On Lid Covers Straw Hole When Not In Use
 - Meets FDA Requirements
 - BPA Free
 - Hand Wash Recommended



#50158

- #50158 - 30 OZ. LISBON STAINLESS STEEL TUMBLER WITH STRAW
- Kit Includes #50138 - 30 Oz. Lisbon Stainless Steel Tumbler and #5202 Stainless Steel Straw With Cleaning Brush
 - Pricing Includes 1-Color Imprint In 1-Location On #50138 - 30 Oz. Lisbon Stainless Steel Tumbler





#50046



#55964



#50152

#50046 - 30 OZ. REYNOLDS STAINLESS STEEL TUMBLER

- Stainless Steel Outer And Inner
- Double Wall Construction For Insulation Of Hot Or Cold Liquids
- Screw-On, Spill-Resistant Thumb-Slide Lid
- Meets FDA Requirements
- BPA Free
- Hand Wash Recommended

#55964 - 19 OZ. EVEREST CLARITY TUMBLER WITH INSERT

- Acrylic Outer And Inner
- Double Wall Construction For Insulation Of Hot Or Cold Liquids
- Snap-On, Spill-Resistant Thumb-Slide Lid With Rubber Gasket
- Insert Decoration Is Inserted Between The Clear Double Walls Of The Tumbler Then Ultrasonically Sealed To Provide Double Wall Insulation
- Lids Packed Separately And Unassembled.
- Meets FDA Requirements • BPA Free
- Hand Wash Recommended

#50152 - 13 OZ. LUCA STAINLESS STEEL TUMBLER

- Stainless Steel Outer And Inner
- Double Wall Construction For Insulation Of Hot Or Cold Liquids
- Screw On, Spill-Resistant Flip Top Lid
- Meets FDA Requirements
- BPA Free
- Hand Wash Recommended

#8145 - 19 OZ. FULL COLOR MUG

- Create Your Own 4-Color Process Design
- Meets FDA Requirements
- Hand Wash Recommended
- Not Recommended for Commercial Use



#50079

#50079 - 32 OZ. EVELYN GLASS TUMBLER WITH HANDLE

- Made Of High Borosilicate Glass With Silicone Sleeve
- Snap-On, Spill-Resistant Lid with 11" Straw with Silicone Tip
- Not For Hot Liquid Use
- Meets FDA Requirements
- BPA Free
- Hand Wash Recommended



#6057

#6057 - 15 OZ. OXFORD GLASS TUMBLER

- Made of Soda Lime Glass
- Screw On, Spill-Resistant Lid With 7" Straw
- Meets FDA Requirements
- BPA Free
- Hand Wash Recommended



#50155



#50156



#50041

#50155 - 32 OZ. VIVIANE STAINLESS STEEL BOTTLE

- Acrylic Outer And Inner
- Double Wall Construction For Insulation Of Hot Or Cold Liquids
- Snap-On, Spill-Resistant Thumb-Slide Lid With Rubber Gasket
- Insert Decoration Is Inserted Between The Clear Double Walls Of The Tumbler Then Ultrasonically Sealed To Provide Double Wall Insulation
- Lids Packed Separately And Unassembled.
- Meets FDA Requirements • BPA Free
- Hand Wash Recommended

#50156 - 32 OZ. VIVIANE STAINLESS STEEL BOTTLE WITH BAMBOO LID

- Acrylic Outer And Inner
- Double Wall Construction For Insulation Of Hot Or Cold Liquids
- Snap-On, Spill-Resistant Thumb-Slide Lid With Rubber Gasket
- Insert Decoration Is Inserted Between The Clear Double Walls Of The Tumbler Then Ultrasonically Sealed To Provide Double Wall Insulation
- Lids Packed Separately And Unassembled.
- Meets FDA Requirements • BPA Free
- Hand Wash Recommended

#50041 - 20 OZ. SERENA ALUMINUM BOTTLE

- Screw On, Spill-Resistant Lid
- Wide Mouth Opening
- Meets FDA Requirements
- BPA Free
- Hand Wash Recommended



#50038

#50038 - 32 OZ. ALTER STAINLESS STEEL TUMBLER

- Stainless Steel Outer and Inner
- Screw On, Spill-Resistant Dual Sip Through and Flip Top Lid
- Removeable Easy Carry Handle
- Meets FDA Requirements
- BPA Free
- Hand Wash Recommended



#50048

#50048 - 17 OZ. LEIGHTON STAINLESS STEEL BOTTLE

- Stainless Steel Outer And Inner
- Smooth Rubberized Finish
- Double Wall Construction For Insulation Of Hot Or Cold Liquids
- Screw On, Spill-Resistant Lid
- Wide Mouth Opening
- Easy Carry Handle
- Meets FDA Requirements
- BPA Free
- Hand Wash Recommended

#57013 - 20 OZ. ALUMINUM TUNDRA BIKE BOTTLE WITH BAMBOO LID

- Screw On, Spill-Resistant Lid With Carabiner
- Meets FDA Requirements
- BPA Free
- Hand Wash Recommended
- Some Colors Are Made With Recycled Materials. Please Visit Our Website To See Options.



#57013

#57014 - 25 OZ. ALUMINUM TUNDRA BIKE BOTTLE WITH BAMBOO LID

- Screw On, Spill-Resistant Lid With Carabiner
- Meets FDA Requirements
- BPA Free
- Hand Wash Recommended



#57014



#50047



#50044



#50042

**#50047 - 20 OZ. KAYDEN
STAINLESS STEEL BOTTLE**

- Stainless Steel Outer And Inner
- Screw On, Spill-Resistant Lid
- Wide Mouth Opening
- Meets FDA Requirements
- BPA Free
- Hand Wash Recommended

#50044 - 20 OZ. AVERY STAINLESS STEEL BOTTLE

- Stainless Steel Outer And Inner
- Electroplated Finish
- Metallic Reflective Look
- Double Wall Construction For Insulation Of Hot Or Cold Liquids
- Screw-On, Spill-Resistant Sip Through Lid With Snap Closure
- Meets FDA Requirements
- BPA Free
- Hand Wash Recommended

#50042 - 20 OZ. JACLYN RPET BOTTLE

- Made From Post Consumer Recycled Materials
- Recycled Polyester (rPET) is Obtained By Melting Down Existing Plastic Bottles And Other Material Sources To Create New Polyester Fiber
- Screw On, Spill-Resistant Lid
- Easy Carry Strap
- Wide Mouth Opening
- Meets FDA Requirements
- BPA Free
- Hand Wash Recommended

64 OZ.



#50040 - 64 OZ. LUCA STAINLESS STEEL JUG

- Stainless Steel Outer And Inner
- Screw On, Spill-Resistant Dual Sip Through And Flip Top Lid
- Easy Carry Handle
- Meets FDA Requirements
- BPA Free
- Hand Wash Recommended

68 OZ.



#50043 - 68 OZ. MOTIVATIONAL WATER BOTTLE

- Screw On, Spill-Resistant Flip-Top Sip Top Lid
- Easy Carry Handle
- Handle Can Double As Phone Stand
- Hourly Time Marker And Capacity Markings To Keep Hydration On Track Throughout The Day
- Molded Non-Slip Side Grip
- Meets FDA Requirements
- BPA Free
- Hand Wash Recommended

New Low Pricing, Fast Turns



#5910

#55910

#5910 - 10 OZ. FROST FLEX CUP

#55910 - 10 OZ. FULL COLOR FROST FLEX CUP

- Sturdy And Reusable • Made In The USA
- Meets FDA Requirements • BPA Free
- Hand Wash Recommended



#5921

#55921

#5921 - 16 OZ. FROST FLEX STADIUM CUP

#55921 - 16 OZ. FULL COLOR FROST FLEX STADIUM CUP

- Sturdy And Reusable • Made In The USA
- Meets FDA Requirements • BPA Free
- Hand Wash Recommended



#55906

#55902

#55906 - 12 OZ. BIG GAME STADIUM CUP

#55902 - 12 OZ. FULL COLOR BIG GAME STADIUM CUP

- Made With Up To 25% Post-Industrial Polypropylene Material • Made In The USA
- Sturdy And Reusable • Meets FDA Requirements
- BPA Free • Hand Wash Recommended



#5900

#55900

#5900 - 16 OZ. BIG GAME STADIUM CUP

#55900 - 16 OZ. FULL COLOR BIG GAME STADIUM CUP

- Made With Up To 25% Post-Industrial Polypropylene Material
- Sturdy And Reusable • Made In The USA
- Meets FDA Requirements • BPA Free
- Hand Wash Recommended



#5901

#55901

#5901 - 22 OZ. BIG GAME STADIUM CUP

#55901 - 22 OZ. FULL COLOR BIG GAME STADIUM CUP

- Made With Up To 25% Post-Industrial Polypropylene Material
- Sturdy And Reusable • Made In The USA
- Meets FDA Requirements • BPA Free
- Hand Wash Recommended





- #55912 - 12 OZ. MOOD STADIUM CUP
#55913 - 12 OZ. FULL COLOR MOOD STADIUM CUP
- Made With Polypropylene Material
 - Cup Changes Color When Ice-Cold Beverages Are Added
 - Sturdy And Reusable
 - Made In The USA
 - Meets FDA Requirements
 - BPA Free
 - Hand Wash Recommended



- #5925 - 17 OZ. BIG GAME MOOD STADIUM CUP
#55925 - 17 OZ. FULL COLOR BIG GAME MOOD STADIUM CUP
- Made With Polypropylene Material
 - Cup Changes Color When Ice-Cold Beverages Are Added
 - Sturdy And Reusable
 - Made In The USA
 - Meets FDA Requirements
 - BPA Free
 - Hand Wash Recommended



- #5935 - 22 OZ. BIG GAME MOOD STADIUM CUP
#55935 - 22 OZ. FULL COLOR BIG GAME MOOD STADIUM CUP
- Made With Polypropylene Material
 - Cup Changes Color When Ice-Cold Beverages Are Added
 - Sturdy And Reusable
 - Made In The USA
 - Meets FDA Requirements
 - BPA Free
 - Hand Wash Recommended



- #5950 THE PARTY CUP®
#55950 FULL COLOR THE PARTY CUP®
- Made From Tri-Edge™ Polypropylene Material • Holds 16 Oz.
 - Double Wall Construction For Insulation Of Hot Or Cold Liquids
 - Sturdy And Reusable • Great For Tailgating, Parties And Company Picnics
 - Made In The USA • Meets FDA Requirements
 - BPA Free • Hand Wash Recommended

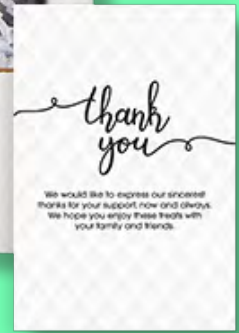


- #55905 - 32 OZ. BIG GAME STADIUM CUP
#55903 - 32 OZ. FULL COLOR BIG GAME STADIUM CUP
- Made With Up To 25% Post-Industrial Polypropylene Material
 - Sturdy And Reusable • Made In The USA
 - Meets FDA Requirements • BPA Free • Hand Wash Recommended

GIFT SETS

#99917 PAMPER ME SET

- Kit Includes #85004 Cali Clay Cement Candle And #85010 Neck & Shoulder Wrap
- Pricing Includes 1-Color/1-Location Imprint On #85004 Cali Clay Cement Candle And Full Color Imprint On Neck & Shoulder Wrap. Includes Mailer Box, Crinkle Stuffing, Insert Card, Box Label and Kitting.
- Create Your Own Message With The Included Insert Card. Add Your Own Design Or Choose From Any Stock Design. Optional Stock Design Shown.
- Optional Full Color Box Imprint Is Offered
- Card Stock Design #000121



#95221 SIP AND STEP GIFT SET

- Set Includes #30064 Anywhere Belt Bag And #50035 - 40 Oz. Intrepid Stainless Steel Tumbler
- Pricing Includes 1-Color/1-Location Imprint On Each Item. Includes Mailer Box, Crinkle Stuffing, Insert Card, Box Label And Kitting.
- Create Your Own Message With The Included Insert Card. Add Your Own Design Or Choose From Any Stock Design. Optional Stock Design Shown.
- Optional Full Color Box Imprint Is Offered
- Card Stock Design #000124





#99921 INTREPID TREK KIT

- Kit Includes #35071 Intrepid Water-Resistant 18-Can Cooler Bag And Two #50035 - 40 Oz. Intrepid Stainless Steel Tumblers
- Price Includes 1-Color/1-Location Imprint On Each Item.



#99923 INTREPID WANDERER KIT

- Set Includes Two #50035 - 40 Oz. Intrepid Stainless Steel Tumblers And #35095 Summit 24 Can Cooler Backpack
- Pricing Includes 1-Color/1-Location Imprint On Each Item.



#9968

#9968 STAY TUNED TECH KIT

- Kit Includes #2829- 3-In-1 Braided Charging Buddy, #2572 Mighty Mini Wireless Speaker And #95195 TWS Earbuds With Charging Case
- Price Includes 1-Color/1-Location Imprint On Each Item. Includes Mailer Box, Crinkle Stuffing, Insert Card, Box Label and Kitting.
- Create Your Own Message With The Included Insert Card. Add Your Own Design or Choose From Any Stock Design.
- Optional Full Color Box Imprint Is Offered



#95244



#95244 RECHARGE TECH KIT

- Kit Includes #2355 Lounger Phone Stand, #2650UL UL Listed 2200 mAh Charge-It-Up Power Bank And #2829 - 3-In-1 Braided Charging Buddy
- Price Includes 1-Color/1-Location Imprint On Each Item



GOURMET FOOD GIFTS



#CHOCSPOON
Mug not included

#CHOCSPOON MILK CHOCOLATE BEVERAGE SPOON

- Add Chocolate Covered Spoon To Warm Milk For A Delicious Cup Of Hot Chocolate
- Milk Chocolate Marshmallow Flavor
- Can Also Be Used In Coffee Or Any Warm Beverage Of Your Choice
- Ingredients On Back Panel



#CHOCBOMB MILK CHOCOLATE BEVERAGE BOMB

- Add Chocolate Bomb To Warm Milk For A Delicious Cup Of Hot Chocolate
- Milk Chocolate Flavor
- Can Also Be Used In Coffee Or Any Warm Beverage Of Your Choice
- Ingredients On Bottom Panel



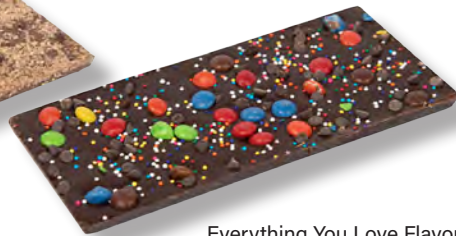
#CHOCBOMB
Mug not included



#CHOCBAR



Cookie Dough Flavor



Everything You Love Flavor



#95175

Popcorn Filling

#CHOCBAR GOURMET CHOCOLATE BAR

- 3.5 Oz. Chocolate Bar Available In Two Gourmet Flavors, Everything You Love Or Cookie Dough
- Window Gift Box Included

#95175 MOVIE NIGHT SNACK KIT

- Kit Includes #2236 - 32 Oz. Party Pail With Handle And Your Choice Of Filler
- Price Includes 1-Color/1-Location Imprint On #2236. Gourmet Snacks Sold As Shown.
- Please See Our Website For Fill Options

#CAKECUP SINGLE SERVE CAKE MIX

- Single Serve Cake Mix In Foil Pouch
- Choose From Chocolate, Yellow or Red Velvet Cake
- Instructions Included
- Price Includes Full Color Gift Card Insert, Clear Bag And Gold Twist Tie



#CAKECUP

Yellow cake flavor





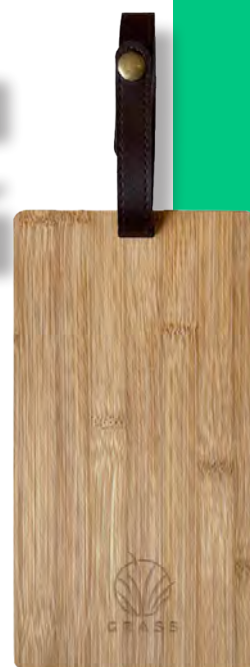
#95165 CHARCUTERIE GIFT PACK

- Kit Includes #76138 Round Bamboo Cutting Board, #MS22 Mug Stuffers Cashews, Dry Cured Salami And Cheese
- Price Includes 1-Location Laser Engraving On #76138 Round Bamboo Cutting Board And 4-Color Laminated Decal On #MS22 Mug Stuffers And Insert Card. Dry Cured Salami And Cheese Included As Shown. Includes Choice Of Stock Design Or Use Your Own Custom Art On Included Card.
- Create Your Own Message With The Included Insert Card. Add Your Own Design Or Choose From Any Stock Design. Optional Stock Design Shown.
- Stock Card Design #000122

Optional Box Imprint



Optional Box Imprint



#99915 BAMBOO CUTTING BOARD CHARCUTERIE SET

- Kit Includes #75034 Cheese Markers, #76137 Bamboo Cutting Board, Dry Cured Salami, Cheese And Crackers.
- Pricing Includes 1-Location Laser Engraving On #76137 Bamboo Cutting Board. Cheese Markers, Crackers, Dry Cured Salami And Cheese Included As Shown. Includes Choice Of Stock Design Or Use Your Own Custom Art On Included Card.
- Create Your Own Message With The Included Insert Card. Add Your Own Design Or Choose From Any Stock Design. Optional Stock Design Shown.
- Stock Card Design #000115



#95224 CLASSIC POPCORN ESSENTIALS KIT

- Kit Includes #75028 Silicone Snack Container, Two Microwavable Bags Of Popcorn And Cheddar Cheese Seasoning Shaker Bottle
- Pricing Includes 1-Color Imprint In 1-Location On #75028 Silicone Snack Container. Popcorn and Shaker Sold As Shown.



#RICEKRISP-PLN

#RICEKRISP-PLN RICE CRISPY TREAT

- ORIGINAL FLAVOR
- Individually Wrapped Original Flavored Rice Crispy Treat
- Standard Pricing Includes Full Color Label

#RICEKRISP-CKCM RICE CRISPY TREAT

- COOKIES AND CREAM FLAVOR
- Individually Wrapped Cookies & Cream Flavored Rice Crispy Treat
- Standard Pricing Includes Full Color Label



#RICEKRISP-CKCM

HITRONICS

10w-15w



TYPE-C

#26556 - 10W SPECKLE & BAMBOO WIRELESS CHARGER

- Charge Qi Enabled Devices Wirelessly By Placing Compatible Device On Top Of Charging Pad
- Terrazzo Design • LED Indicator Lights
- Features A Type-C Input (Cord Included)
- Output: 10W
- Please Note That Some Computer And Laptop USB Ports May Not Supply Enough Power To Charge A Device Using This Charging Pad.

#26556



#25162

10w-15w



TYPE-C

#25162 - 15W RECYCLED ALUMINUM WIRELESS CHARGER

- Made Of Recycled Aluminum And Plastic
- Charge Qi Enabled Devices Wirelessly By Placing Compatible Device On Top Of Charging Pad
- LED Indicator Lights
- Features A Type-C Input (Cord Included) • Output: 15W
- Please Note That Some Computer And Laptop USB Ports May Not Supply Enough Power To Charge A Device Using This Charging Pad.

Lofi
BEATS

#28829



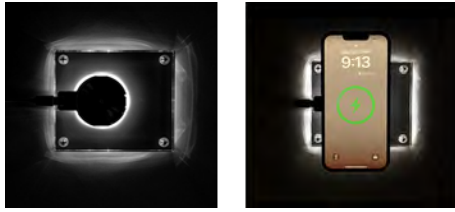
10w-15w



TYPE-C

#28829 - 10W GLASS & BAMBOO WIRELESS CHARGER

- Charge Qi Enabled Devices Wirelessly By Placing Compatible Device On Top Of Charging Pad
- LED Indicator Lights
- Features A Type-C Input (Cord Included) • Output: 10W
- Please Note That Some Computer And Laptop USB Ports May Not Supply Enough Power To Charge A Device Using This Charging Pad.



Phone Not Included

10w-15w



TYPE-C

#25163 15W ACRYLIC LIGHT UP WIRELESS CHARGER

- Charge Qi Enabled Devices Wirelessly By Placing Compatible Device On Top Of Charging Pad
- White LED Lights Illuminate When In Use Features Over Current & Over Temperature Protection And FOD (Foreign Object Detection)
- Features A USB-C Input (Cord Included) • Output: 15W
- Please Note That Some Computer And Laptop USB Ports May Not Supply Enough Power To Charge A Device Using This Charging Pad



10w-15w



TYPE-C

#26889 TRANSLUCENT WIRELESS CHARGER

- Charge Qi Enabled Devices Wirelessly By Placing Compatible Device On Top Of Charging Pad
- LED Indicator Lights
- Features A Type-C Input (Cord Included)
- Output: 10W
- Requires Your Phone's Charging Cord To Charge Your Device
- Please Note That Some Computer And Laptop USB Ports May Not Supply Enough Power To Charge A Device Using This Charging Pad



#25181

10w-30w



Phone Not Included

#25181 - 10000 MAH POWER BANK

- 10000 mAh Lithium Ion Grade A Non-Recycled Battery
- Indicator Lights
- Features A Type-C Input (Cord Included)
- Output: 30W
- Charge Multiple Devices At Once When Using An Ample Power Source
- Charging Time Approximately 3 Hours
- Charges Most Devices

#25180 - 5000 MAH RPET POWER BANK

- Made From Post Consumer Recycled Materials
- Recycled Polyester (rPET) is Obtained By Melting Down Existing Plastic Bottles And Other Material Sources To Create New Polyester Fiber
- 5000 mAh Lithium Ion Grade A Non-Recycled Battery
- Indicator Lights • Features A Type-C Input (Cord Included) • Output: 10W
- Charge Multiple Devices At Once When Using An Ample Power Source
- Charging Time 2-3 Hours • Charges Most Devices



#25180



10w-15w



10w-15w



TYPE-C

#25175 10W BAMBOO WIRELESS CHARGER WITH PEN HOLDER

- Charge Qi Enabled Devices Wirelessly By Placing Compatible Device On Top Of Charging Pad
- Features A Type-C Input (Cord Included) • Output: 10W
- Requires Your Phone's Charging Cord To Charge Your Device
- Phone Holder Holds A Variety Of Phone Sizes For Easy Viewing
- Holds Two Writing Instruments
- Please Note That Some Computer And Laptop USB Ports May Not Supply Enough Power To Charge A Device Using This Charging Pad



Phone and Pens Not Included



TYPE-C

#25035 - 5000 MAH BAMBOO POWER BANK

- 5000 mAh Lithium Ion Grade A Non-Recycled Battery
- LED Indicator Lights
- Features A USB Output And Type-C Input (Cord Included)
- Output: 5 Volts/2 Amps
- Requires Your Phone's Charging Cord To Charge Your Device
- Charges Most Devices



TYPE-C

#28333 MULTI-PORT HUB WITH PHONE HOLDER & STICKY NOTES

- Expand Available USB And Type-C Ports On Your Computer For Additional Peripherals (Mouse, Keyboard, Printer, Etc.)
- Features USB-A Or Type-C Input (Built-In Cord)
- Output: 2 High Speed USB Ports And 2 Type-C Ports
- Holds A Variety Of Phone Sizes For Easy Viewing
- Includes 1 Sticky Note Pad



Phone Not Included



TYPE-C

#25187 DUAL INPUT BAMBOO HUB

- Expand Available USB Ports On Your Computer For Additional Peripherals (Mouse, Keyboard, Printer, Etc.)
- 2 High Speed USB-A Ports And 2 Type-C Ports For Charging Or Data Transfer
- Features Dual Input USB-A Or Type-C (Built-In Cord)





TYPE-C

#25036 FLAMINGO 3-IN-1 PRE-CHARGED CHARGER

- UL Listed (UL File #E534994, Model# K700)
- Rechargeable And Reusable
- Charges Earbuds, Phones And Speakers
- Pre-Charged - Charges Phones Up To 80% (Depending On Model)
- Compatible With Lightning, Micro-USB And Type-C Devices
- 3000 mAh Lithium Polymer Battery Included
- Charging Time Approximately 3 Hours



Phone Not Included



TYPE-C

#25166 - 4-IN-1 CHARGING CABLE WITH MIRROR & PHONE STAND

- Compatible With Apple® 8-Pin, Micro USB And Type-C Devices
- Simply Plug The Cable Into A Powered USB Port And Then Into Your Device Or Smartphone
- Open Top To Use Mirror
- Holds A Variety Of Phones Sizes For Easy Viewing



Phone Not Included



#26521

Phone Not Included

10w-15w

TYPE-C

#26521 - 10W BAMBOO WIRELESS CHARGER WITH DIGITAL CLOCK

- Charge Qi Enabled Devices Wirelessly By Placing Compatible Device On Top Of Charging Pad
- Digital Display • 24-Hour Clock Settings With Alarm
- LED Indicator Lights • Overheat Control
- Features A Type-C Input (Cord Included)
- Output: 10W
- Please Note That Some Computer And Laptop USB Ports May Not Supply Enough Power To Charge A Device Using This Charging Pad.
- Requires Your Phone's Charging Cord To Charge Your Device
- Phone Holder Holds A Variety Of Phone Sizes For Easy Viewing

#26450 CONVERTIBLE PHONE STAND

- Holds A Variety Of Phone Sizes For Easy Viewing
- Horizontal Or Vertical Orientation
- Insert Magnetic Wireless Charger To Charge Device (Not Included) • Compatible With Most Smartphones
- Requires Your Phone's Charging Cord For Device



#26450

Folded

Phone Not Included

10w-15w



TYPE-C

#25169 LIGHT UP DOUBLE SIDED MIRROR WITH WIRELESS CHARGER

- Double Sided Light Up Mirror • Front Mirror 0x Magnification, Back Mirror 5x Magnification
- Push Button To Turn On/Off • Three Light Settings
- Charge Qi Enabled Devices Wirelessly By Placing Compatible Device On Mirror Handle
- Features A Type-C Input (Cord Included) • Output: 10W
- Remove Mirror From Base For Easy Storage And Travel
- Please Note That Some Computer And Laptop USB Ports May Not Supply Enough Power To Charge A Device Using This Charging Pad

10w-15w



TYPE-C

#25183 - 3-IN-1 MODULARIZED WIRELESS CHARGER

- Charge Qi Enabled Devices Wirelessly By Placing Compatible Device On Top Of Charging Pad
- Charge Phone, Earbuds And Smart Watch Battery Simultaneously
- LED Indicator Lights • Features A Type-C Input (Cord Included)
- Output: 3W, 10W & 15W
- Please Note That Some Computer And Laptop USB Ports May Not Supply Enough Power To Charge A Device Using This Charging Pad.



#25183

Phone & Watch Not Included



#25169



Contents Not Included



Back Mirror
5x Magnification



Front Mirror
0x Magnification



Devices Not Included



#25176



#25403



Devices Not Included

10w-15w



TYPE-C

#25176 FABRIC & BAMBOO WIRELESS CHARGER WITH CLOCK

- Digital Display With 24-Hour Clock Settings
- Charge Qi Enabled Devices Wirelessly By Placing Compatible Device On Top Of Charging Pad
- Charge Phone & Earbuds Simultaneously
- Features A Type-C Input (Cord Included)
- Output: Up To 15W • Overheat Control
- Please Note That Some Computer And Laptop USB Ports May Not Supply Enough Power To Charge A Device Using This Charging Pad.

10w-15w



TYPE-C

#25403 - 3-IN-1 BAMBOO WIRELESS CHARGER

- Charge Qi Enabled Devices Wirelessly By Placing Compatible Device On Top Of Charging Pad
- Charge Phone, Earbuds And Smart Watch Battery Simultaneously
- Compatible With Samsung And Apple® Products
- LED Indicator Lights
- Features A Type-C Input (Cord Included)
- Output: 10W
- Please Note That Some Computer And Laptop USB Ports May Not Supply Enough Power To Charge A Device Using This Charging Pad.
- Apple® and Lightning® are registered trademarks of Apple® Inc., registered in the U.S. and other countries.
- Samsung is a registered trademark of Samsung Group, registered in the U.S. and other countries.

10w-15w



TYPE-C

#26888 - 3-IN-1 FOLDING CHARGING STATION

- Charge Qi Enabled Devices Wirelessly By Placing Compatible Device On Top Of Charging Pad
- Charge Phone, Earbuds And Smart Watch Battery Simultaneously
- Folds When Not In Use For Easy Travel & Storage
- Watch Charger Compatible With Apple® Watch Only
- LED Indicator Lights • Features A Type-C Input (Cord Included)
- Output: 10W, 3W
- Please Note That Some Computer And Laptop USB Ports May Not Supply Enough Power To Charge A Device Using This Charging Pad.
- Requires Your Apple Watch Charger For Smart Watch Battery Charging

10w-15w



TYPE-C

#26750 RPET 10W WIRELESS CHARGING MOUSE PAD

- Made From Post Consumer Recycled Materials
- Recycled Polyester (rPET) is Obtained By Melting Down Existing Plastic Bottles And Other Material Sources To Create New Polyester Fiber
- Charge Qi Enabled Devices Wirelessly By Placing Compatible Device On Charging Pad
- Folds For Easy Travel & Storage
- Charging Pad Doubles As A Phone Stand
- Features A Type-C Input • Output: 10W
- Please Note That Some Computer And Laptop USB Ports May Not Supply Enough Power To Charge A Device Using This Charging Pad.



#26750

Devices Not Included

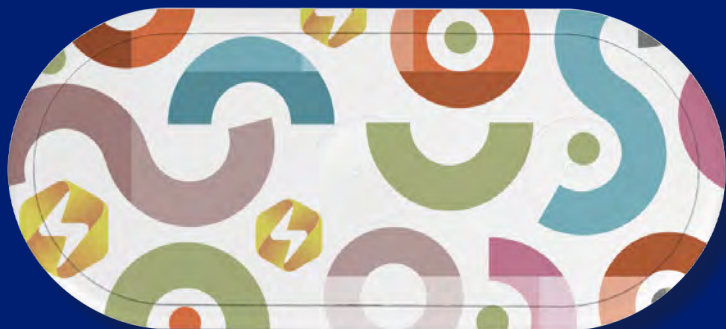


#26888



Devices Not Included





Contents Not Included



Devices Not Included

10w-15w



TYPE-C

#25657 - 3-IN-1 RECYCLED WIRELESS CHARGER

- Outer Shell Made Of Recycled Plastic
- Charge Qi Enabled Devices Wirelessly By Placing Compatible Device On Top Of Charging Pad
- Charge Phone, Earbuds And Smart Watch Battery Simultaneously
- Features Over Current & Over Temperature Protection And FOD (Foreign Object Detection)
- Compatible With Apple® Products • LED Indicator Lights
- Features A Type-C Input (Cord Included) • Output: 3W, 10W & 15W
- Please Note That Some Computer And Laptop USB Ports May Not Supply Enough Power To Charge A Device Using This Charging Pad.
- Apple® and Lightning® are registered trademarks of Apple® Inc., registered in the U.S. and other countries.



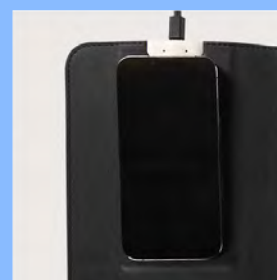
10w-15w



TYPE-C

#26520 DESK MAT WITH 15W WIRELESS CHARGER

- Charge Qi Enabled Devices Wirelessly By Placing Compatible Device On Top Of Charging Pad
- Large Work Surface Area With Wireless Charger On The Side
- Protects Desk Top From Scuffs & Scratches
- Use As A Mouse Pad
- Features A Type-C Input (Cord Included) • Output: 15W
- Please Note That Some Computer And Laptop USB Ports May Not Supply Enough Power To Charge A Device Using This Charging Pad.



Phone Not Included



#26444

Phone Not Included



TYPE-C

#26444 BAMBOO PHONE HOLDER KEYRING WITH CHARGING CABLES

- Compatible With Apple® Lightning®, Micro USB And Type-C Devices
- Simply Plug The Cable Into A Powered USB Port And Then Into Your Device Or Smartphone
- Charge Multiple Devices At Once When Using An Ample Power Source
- Split Ring Attachment
- Holds A Variety Of Phones Sizes For Easy Viewing



#25156

#25164



TYPE-C

#25156 - 3 FT. 4-IN-1 CHARGING CABLE

- Compatible With Apple® Lightning®, Micro USB And Type-C Devices
- Simply Plug The Cable Into A Powered USB Port And Then Into Your Device Or Smartphone



TYPE-C

#25164 - 5-IN-1 CHARGING CABLE

- Compatible With Apple® Lightning®, Micro USB And Type-C Devices
- Portable Case For Easy Storage & Travel
- Simply Plug The Cable Into A Powered USB Port And Then Into Your Device Or Smartphone
- Features Type-C Input (Cord Included)
- Ejection Pin for SIM Card



10w-15w



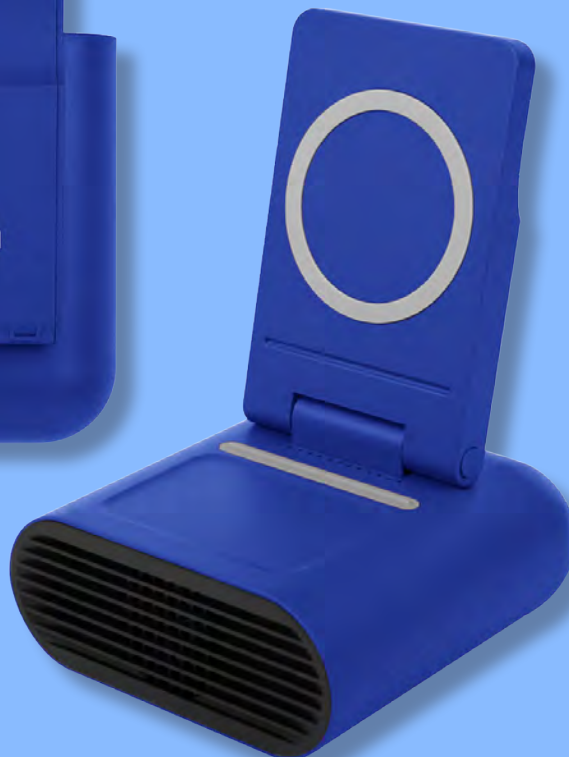
TYPE-C

#25189 TYPE-C WALL ADAPTER

- Features AC, USB & Type-C Output And 2 Type-C, USB & AC Inputs
- 15W Power Delivery • Quickly & Efficiently Charges Most Devices
- Requires Your Phone's Charging Cord To Charge Your Device



#26510



10w-15w



TYPE-C

#26510 DUET WIRELESS CHARGER WITH SPEAKER & PHONE STAND

- Charge Qi Enabled Devices Wirelessly By Placing Compatible Device On Top Of Charging Pad
- Charge Phone And Earbuds Simultaneously
- Wireless Speaker Featuring High Definition Bluetooth® 5.0 Technology
- Simply Pair Your Device To Enjoy Dynamic Stereo Sound
- Dual Internal Coils Allow For Horizontal Or Vertical Phone Charge
- Features A Type-C Input (Cord Included)
- Output: Phone: 10W, Earbuds: 5W
- 300 mAh Lithium Polymer Battery
- Up To 2 1/2 Hours Of Play Time
- Please Note That Some Computer And Laptop USB Ports May Not Supply Enough Power To Charge A Device Using This Charging Pad.
- The Bluetooth® word mark and logos are registered trademarks owned by the Bluetooth SIG, Inc. and any use of such marks by Hit Promotional Products, Inc. is under license. Other trademarks and trade names are those of their respective owners.

10w-15w



TYPE-C



#25158 15W GLASS TOP WIRELESS CHARGER & SPEAKER

- Charge Qi Enabled Devices Wirelessly By Placing Compatible Device On Top Of Charging Pad
- Wireless Speaker Featuring High Definition Bluetooth® 5.1 Technology
- Simply Pair With Your Device To Enjoy Dynamic Stereo Sound
- Features A Type-C Input (Cord Included)
- 750mAh Lithium Polymer Battery Included
- Output 15W
- Up To 2 Hours Of Play Time
- Please Note That Some Computer And Laptop USB Ports May Not Supply Enough Power To Charge A Device Using This Charging Pad.



Phone Not Included



#26555



TYPE-C

#26555 SPECKLE & BAMBOO WIRELESS SPEAKER

- Terrazzo Speaker With A Bamboo Grill
- Wireless Speaker Featuring High Definition Bluetooth® 5.0 Technology
- Simply Pair Your Device To Enjoy Dynamic Stereo Sound
- Features A Type-C Input (Cord Included)
- 500 mAh Lithium Polymer Battery
- Pairs From Up To 32 Feet Away
- Up To 2 Hours Of Play Time



#25291

#25291 SOUND ASLEEP WHITE NOISE MACHINE & SPEAKER

- Wireless Speaker Featuring High Definition Bluetooth® 5.3 Technology
- Simply Pair With Your Device To Enjoy Dynamic Stereo Sound
- Includes 6 Soothing Sounds - Bird Chirps, Rainy Day, Fireside, White Noise, Ocean Waves And Windy Breeze
- Features Time Span Options Or Continuous Play (Instructions Included)
- LED Indicator Lights
- Features A Micro USB Input (Cord Included)
- 300 mAh Lithium Polymer Battery Included
- Pairs From Up To 30 Feet Away
- Up To 2 Hours Of Play Time



#25290 SOUND ASLEEP BAMBOO WHITE NOISE MACHINE & SPEAKER

- Made Of ABS With Bamboo Face
- Wireless Speaker Featuring High Definition Bluetooth® 5.3 Technology
- Simply Pair With Your Device To Enjoy Dynamic Stereo Sound
- Includes 6 Soothing Sounds - Bird Chirps, Rainy Day, Fireside, White Noise, Ocean Waves And Windy Breeze.
- Features Time Span Options Or Continuous Play (Instructions Included)
- LED Indicator Lights
- Features A Micro USB Input (Cord Included)
- 300 mAh Lithium Polymer Battery Included
- Pairs From Up To 30 Feet Away
- Up To 2 Hours Of Play Time



#25184



TYPE-C

#25184 RABS & BAMBOO SPEAKER

- Features High Definition Bluetooth® 5.0 Wireless Technology
- Simply Pair With Your Device To Enjoy Dynamic Stereo Sound
- Perfect For Your Home, Office Or Outdoor Activities
- Features A Type-C Input (Cord Included)
- Pairs From Up To 30 Feet Away
- Up To 2 Hours Of Play Time



#25185



10w-15w

#25185 RPET LIGHT UP 15W CHARGER & HI-FI SPEAKER

- Made From Post Consumer Recycled Materials
- Recycled Polyester (rPET) is Obtained By Melting Down Existing Plastic Bottles And Other Material Sources To Create New Polyester Fiber
- Charge Qi Enabled Devices Wirelessly By Placing Compatible Device On Top Of Charging Pad
- Wireless Speaker Featuring High Definition Bluetooth® 5.0 Technology
- Simply Pair With Your Device To Enjoy Dynamic Stereo Sound
- Features A Micro USB Input (Cord Included) • Output 15W
- Pairs From Up To 30 Feet Away • Up To 4 Hours Of Play Time
- Please Note That Some Computer And Laptop USB Ports May Not Supply Enough Power To Charge A Device Using This Charging Pad.

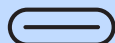


Phone Not Included



#26778 SOUND WAVE WATERPROOF SPEAKER

- Features High Definition Bluetooth® 5.0 Wireless Technology
- Simply Pair With Your Device To Enjoy Dynamic Stereo Sound
- Perfect For Your Home, Office Or Outdoor Activities
- Features A Micro-USB Input (Cord Included)
- 1800 mAh Lithium Polymer Battery
- Pairs From Up To 30 Feet Away • Up To 2 Hours Of Play Time



TYPE-C

#25170 OUTDOOR CARABINER SPEAKER

- Wireless Speaker Featuring High Definition Bluetooth® 5.0 Technology
- Simply Pair Your Device To Enjoy Dynamic Stereo Sound
- Water-Resistant • Carabiner Attachment
- Great For Pool, Beach, Boating Or Any Water Activity
- Features A Type-C Input (Cord Included)
- 400 mAh Lithium Polymer Battery
- Pairs From Up To 30 Feet Away • Up To 4 Hours Of Play Time



#25170



#26778



TYPE-C

#25613 MAGNETIC SPEAKER WITH CARABINER

- Wireless Speaker Featuring High Definition Bluetooth® 5.3 Technology
- Simply Pair Your Device To Enjoy Dynamic Stereo Sound
- Magnet On Backside To Attach To Golf Cart, Etc.
- Water-Resistant • Carabiner Attachment
- Features A Type-C Input (Cord Included)
- 1800 mAh Lithium Polymer Battery
- Pairs From Up To 32 Feet Away
- Up To 5 Hours Of Play Time



#25613



#25179

#25179 RABS SPEAKER

- Made Of Recycled ABS
- Wireless Speaker Featuring High Definition Bluetooth® 5.0 Technology
- Simply Pair Your Device To Enjoy Dynamic Stereo Sound
- Wrist Strap
- Features A Micro-USB Input (Cord Included)
- 1200 mAh Lithium Polymer Battery
- Pairs From Up To 32 Feet Away
- Up To 4 Hours Of Play Time



TYPE-C

#25191 LIGHT UP SOUND MACHINE & SPEAKER

- Features High Definition Bluetooth® 5.0 Wireless Technology
- Simply Pair With Your Device To Enjoy Dynamic Stereo Sound
- 8 Soothing Sounds To Choose From - Brook Noise, Bird Chirp, Forest Bird, White Noise, Ocean Wave, Rainy Day, Wind & Fireside
- 5 Colorful Light Effects
- Fabric Grille
- Features A Type-C Input (Cord Included)
- Pairs From Up To 32 Feet Away



#25191



Multi-Color Setting



TYPE-C

#25610 WIRELESS SPEAKER WITH TOUCH SENSOR NIGHT LIGHT

- Wireless Speaker Featuring High Definition Bluetooth® 5.0 Technology
- Simply Pair Your Device To Enjoy Dynamic Stereo Sound
- Bright White LED Nightlight With Low, Medium & High Settings
- Multi-Color Light Setting
- Touch Sensor Button To Change Brightness Setting
- Features A Type-C Input (Cord Included)
- Pairs From Up To 30 Feet Away
- Up To 2.5 Hours Of Play Time



Phone Not Included

#25611



TYPE-C

#25611 MINI MAGNETIC SPEAKER

- Wireless Speaker Featuring High Definition Bluetooth® 5.0 Technology
- Simply Pair Your Device To Enjoy Dynamic Stereo Sound
- Attaches To Any Metal Surface Or Your Device
- Base Adheres To The Back Of Your Device Using Built-In Magnets (iPhone 12 & Newer)
- Adhesive Magnetic Ring Included For Attaching To All Other Bluetooth® Devices
- Can Also Be Used As A Phone Stand • Features A Type-C Input (Cord Included)
- 400 mAh Lithium Polymer Battery Included • Pairs From Up To 30 Feet Away
- Up To 4 Hours Of Play Time
- Apple® is a trademark of Apple Inc., registered in the U.S. and other countries.

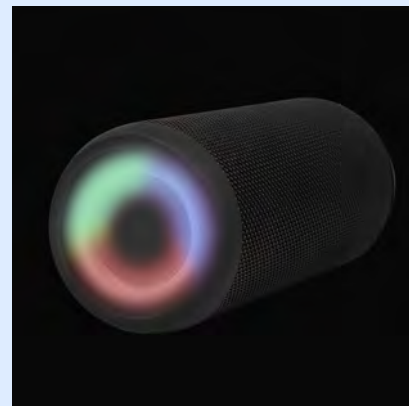
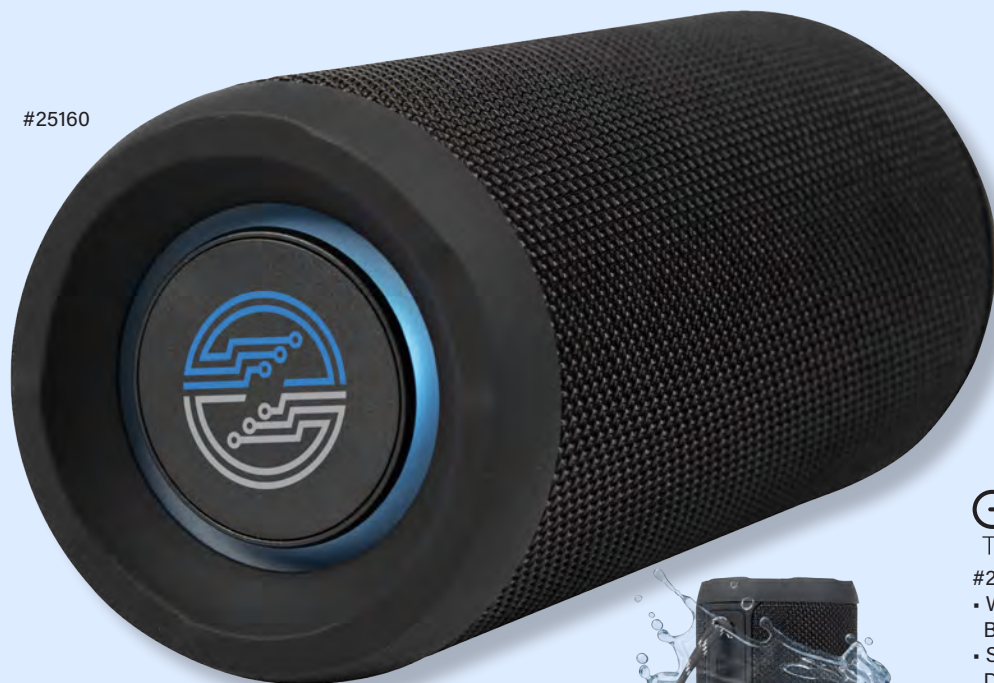
#25608 MAGNETIC SPEAKER WITH EMERGENCY LIGHT

- Wireless Speaker Featuring High Definition Bluetooth® 5.1 Technology
- Simply Pair Your Device To Enjoy Dynamic Stereo Sound • Waterproof
- Perfect For Your Home, Office Or Outdoor Activities
- Magnetic Base • Press Button For High, Low, SOS And Off Settings
- Features A Micro-USB Input (Cord Included)
- 1800 mAh Lithium Polymer Battery Included • Pairs From Up To 32 Feet Away
- Up To 6 Hours Of Play Time



#25608

#25160



TYPE-C

#25160 LIGHT SHOW WATERPROOF SPEAKER

- Wireless Speaker Featuring High Definition Bluetooth® 5.0 Technology
- Simply Pair With Your Device To Enjoy Dynamic Stereo Sound
- Built-In Microphone With Volume Control
- Multi-Color Light Show On Both Ends
- Lanyard Loop
- Power, Volume And Equalizer Press Buttons
- SD Card Slot
- Aux Port • 3.5mm Headphone Jack Included
- Features A Type-C Input With Waterproof Cover (Cord Included)
- 1800 mAh Lithium Polymer Battery Included
- Up To 15 Hours Of Play Time



#25609



TYPE-C

#25609 SOUND SPLIT WATERPROOF SPEAKER

- Detachable Wireless Speaker Featuring High Definition Bluetooth® 5.1 Technology
- Simply Pair Your Device To Enjoy Dynamic Stereo Sound
- Separate Into Dual Speakers For Surround Sound Mode
- Perfect For Your Home, Office Or Outdoor Activities
- Features A Type-C Input (Cord Included)
- 1200 mAh Lithium Polymer Battery Included
- Pairs From Up To 32 Feet Away
- Up To 8 Hours Of Play Time





#26511

TYPE-C

#26511 SOUND ZONE TWS & ANC EARBUDS SET

- Includes 1 Pair ANC (Active Noise Cancellation) And 1 Pair TWS (True Wireless Stereo) Earbuds
- Features High Definition Bluetooth® 5.0 Wireless Technology And Built-In Microphone With Volume Control
- Simply Pair With Your Device To Enjoy Dynamic Stereo Sound Or Receive Hands-Free Calls
- Works With Most Audio Devices • Hands-Free Design
- Press Earbuds To Advance Through Selections And Answer/End Calls
- Store Earbuds In Magnetic Charging Base
- Features A Type-C Input (Cord Included)
- Pairs From Up To 30 Feet Away

TYPE-C

#25614 TWS GAMING EARBUDS

- Level Up Your Gaming Experience With Minimal Delay, Low Latency Earbuds
- Features High Definition Bluetooth® 5.3 Wireless Technology And Built-In Microphone With Volume Control
- Simply Pair With Your Device To Enjoy Dynamic Stereo Sound Or Receive Hands-Free Calls
- Works With Most Audio Devices
- Multi-Color LED Lights Illuminate And A Sword Swoosh Sound Chimes When Cover Slides Up
- Hands-Free Design
- Press Earbuds To Advance Through Selections And Answer/End Calls
- Store Earbuds In Magnetic Charging Base
- Features A Type-C Input (Cord Included)
- Pairs From Up To 30 Feet Away • Up To 4 Hours Play Time



#25614





TYPE-C

#25159 NOISE CANCELLING HEADPHONES

- ANC (Active Noise Cancellation) Headphones Provide Noise Reduction Up To 20dB
- Features High Definition Bluetooth® 5.0 Wireless Technology
- Simply Pair With Your Device To Enjoy Dynamic Stereo Sound
- Works With Most Audio Devices
- Approximately 10 Hours Use Per Charge
- Charging Time Approximately 1 Hour
- 3.5mm Headphone Jack Included
- Features A Type-C Input (Cord Included)
- The Bluetooth® word mark and logos are registered trademarks owned by the Bluetooth SIG, Inc. and any use of such marks by Hit Promotional Products®, Inc. is under license. Other trademarks and trade names are those of their respective owners



Phone Not Included



#55232 - 10" LED RING LIGHT WITH PHONE HOLDER

- Extra Bright White LED Ring Light
- Warm Light, Mix Light And Cold Light Settings Provide Perfect Lighting For Zoom Meetings, Photos & Videos
- Control Can Change The Angle Of The Phone Or Change The Lighting Preference
- Features Micro USB Input (Cord Included)
- Holds A Variety Of Phones For Easy Viewing
- Does Not Charge Phone



#25777

Phone Not Included

#25777 TETHER CORD PHONE LANYARD

- Adjustable 6 mm Rope Lanyard With Lobster Claw Attachment And Tether Patch
- Can Be Worn Around The Neck Or Crossbody
- Tether Patch Fits Inside Phone Case And Attaches To Lanyard
- Allows Access To Charging Port
- Fits Most Smart Phones

#7527 REBOUNDTAG SMART LUGGAGE TAG

- Works In All Airports Worldwide
- You Are Updated By Email And SMS When Your Bag Is Found
- Exclusive Arrangements With Baggage Handling Companies To Share Information
- Incorporates All Relevant Airport Technologies In One Tag
- Your Details Remain Secure (They Are Not On The Microchip)
- Also Uses GPS Within Finder's Phone To Provide You With Exact Location Of Your Bag



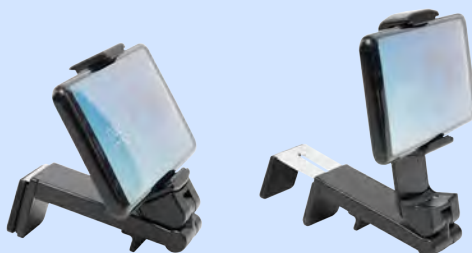
#7527



#25190

Back

Phone Not Included



*Phone Not Included

Adjustable Height & Clamp



#25190 DESKTOP PHONE BRACKET

- Versatile Mounting Options
- 360° Rotation Allows For Horizontal Or Vertical Orientation
- Holds A Variety Of Phone Sizes For Easy Viewing
- Compact Design For Easy Travel



Devices Not Included



#25161 PREMIUM METAL DEVICE HOLDER

- Features 120° Angle Adjustment, 180° Height Adjustment And 360° Rotation
- Holds A Variety Of Phones And Tablets For Easy Viewing
- Non-Slip Base
- Folds Compact For Easy Travel & Storage



Phone Not Included

#25188 BAMBOO PHONE STAND

- Made Of Bamboo
- Holds A Variety Of Phone Sizes For Easy Viewing
- Slot For Charging Cable (Not Included)



Phone Not Included

#25174 RABS PHONE & TABLET STAND

- Made Of rABS
- Fits Devices Vertically Or Horizontally
- Folds Compact For Easy Travel & Storage



#25612 RPET TECH TRAVEL POUCH

- Made Of Combo: 100% rPET 600D Polyester/PU & 100% rPET 210D/PU
- Made From Post Consumer Recycled Materials
- Recycled Polyester (rPET) is Obtained By Melting Down Existing Plastic Bottles And Other Material Sources To Create New Polyester Fiber
- Zipper, Mesh Pockets And Handles Are Not rPET
- Interior Pockets And Elastic Straps For Organization
- Large Inside Pocket With Snap Closure For Storing Headphones
- Spot Clean/Air Dry
- This Material Is Recyclable In Limited Facilities In The US. Consumers Should Check Their Local Recycling Capacities Before Placing In Their Recycling Bins.



Contents Not Included



#30086 ROVER ECO TECH & TRAVEL POUCH

- Made from 1.6 PET Bottles (500ml)
- Zippered Main Compartment
- Lightweight & Durable • Water & Stain Repellent
- Elastic Back Pocket For Carrying Passport, Cards And Other Accessories
- Notebook Compartment • Carrying Cord
- Pen Compartment • Spot Clean/Air Dry
- This Material Is Recyclable In Limited Facilities In The US. Consumers Should Check Their Local Recycling Capacities Before Placing In Their Recycling Bins.



Contents Not Included

BAGS, DUFFELS & ACCESSORIES

#30075 SOL MATE TOTE BAG

- Made Of 4MM EVA
- Rubber Look & Feel
- Sturdy, Tip-Proof Design
- Rinse Off To Clean
- Perfect For The Beach Or Any Outdoor Activity



#30108 THE WEEKENDER TRAVEL BAG WITH DROP BOTTOM

- Made Of Combo: 210D Polyester And Matte PU
- Double Zippered Main Compartment
- Easy-Access Opening
- Zippered Drop-Bottom Compartment To Keep Your Shoes, Toiletries And Travel Essentials Separate
- Front Zippered Pocket
- Interior Slip Pocket
- Back Zippered Pocket Turns Into Trolley Sleeve To Fit Over Your Luggage
- Detachable Padded Shoulder Strap And Carrying Handles
- Spot Clean/Air Dry



#30080



Back



#30082



#30083

#30080 CHANDLER COTTON TOTE BAG

- Made Of 12 Oz. Cotton Canvas
- Spot Clean/Air Dry

#30082 ROPE TOTE BAG WITH 100% RPET MATERIAL

- Made From Post Consumer Recycled Materials
- Recycled Polyester (rPET) Is Obtained By Melting Down Existing Plastic Bottles And Other Material Sources To Create New Polyester Fiber
- Rope Straps And Zippers Are Not rPET
- Top Zippered Closure
- 24" Rope Shoulder Straps Double As Storage Straps For Yoga Mat, Towel, Jacket, Etc.
- Interior Drop Pocket • Spot Clean/Air Dry
- This Material Is Recyclable In Limited Facilities In The US. Consumers Should Check Their Local Recycling Capacities Before Placing In Their Recycling Bins.

#30083 ABROAD TRAVELER TOTE BAG

- Made Of Combo: Microfiber With Pongee Lining
- Zippered Main Compartment
- Front Zippered Pocket
- Multiple Interior Pockets For Organizing
- Detachable/Adjustable Shoulder Strap
- Web Carrying Handles
- Spot Clean/Air Dry



#30093



#30096



#30102

#30093 BIANCA BUCKLE TOTE BAG

- Made Of Combo: 600D Polyester With 190T Lining
- Large Open Main Compartment And Front Slip Pocket With Plastic Buckle Closure
- Spot Clean/Air Dry

#30096 RENAE RPET TOTE BAG

- Made From Post Consumer Recycled Materials
- Recycled Polyester (rPET) Is Obtained By Melting Down Existing Plastic Bottles And Creating New Polyester Fiber
- Inside Lining, Zipper, Handle And Buckle Are Not RPET
- Top Zippered Closure • Interior Pockets
- Adjustable Shoulder Straps • Spot Clean/Air Dry
- This Material Is Recyclable In Limited Facilities In The US. Consumers Should Check Their Local Recycling Capacities Before Placing In Their Recycling Bins.

#30102 LUXE QUILTED PUFFER TOTE BAG

- Made Of Water-Resistant Nylon
- Zippered Main Compartment
- Interior Zippered Pocket • Interior Slip Pocket
- Front Slip Pocket • Spot Clean/Air Dry



#30084



#30069

#30084 RAINBOW LAMINATED NON-WOVEN TOTE BAG

- Made Of 80 Gram Laminated Non-Woven, Coated Water-Resistant Polypropylene
- Heat Sealed Seams • Reusable • Spot Clean/Air Dry
- This Material Is Recyclable In Limited Facilities In The US. Consumers Should Check Their Local Recycling Capacities Before Placing In Their Recycling Bins.

#30069 RAINBOW TOTE BAG

- Made Of 210D Polyester
- Spot Clean/Air Dry

#30064 ANYWHERE BELT BAG

- Made Of Combo: 230T Polyester & 150D Polyester Lining
- Can Be Worn As A Fanny Pack Or Across The Chest Sling
- Zippered Main Compartment
- Back Zippered Pocket
- Detachable/Adjustable Waist Strap
- Spot Clean/Air Dry



#30095 ANYWHERE RPET HEATHERED BELT BAG

- Made From Post Consumer Recycled Materials
- Recycled Polyester (rPET) is Obtained By Melting Down Existing Plastic Bottles And Other Material Sources To Create New Polyester Fiber
- Lining, Zipper And Buckle Are Not rPET
- Zippered Main Compartment • Back Zippered Pocket
- Can Be Worn As A Fanny Pack Or Across The Chest Sling
- Detachable/Adjustable Waist Strap • Spot Clean/Air Dry
- This Material Is Recyclable In Limited Facilities In The US. Consumers Should Check Their Local Recycling Capacities Before Placing In Their Recycling Bins.



#30088

#30088 QUICK ACCESS RPET SLING BAG

- Made From Post Consumer Recycled Materials
- Recycled Polyester (rPET) Is Obtained By Melting Down Existing Plastic Bottles And Other Material Sources To Create New Polyester Fiber
- Inside Lining, Zipper and Buckle Are Not rPET
- Double Zippered Main Compartment • Front Slip Pocket
- Adjustable Shoulder Strap • Spot Clean/Air Dry
- This Material Is Recyclable In Limited Facilities In The US. Consumers Should Check Their Local Recycling Capacities Before Placing In Their Recycling Bins.

Contents Not Included



#35070 BROADWAY SLING BAG

- Faux Leather
- Made Of Combo: Polyurethane Front, 600D Polyester On Sides And Pongee Lining
- Zippered Main Compartment
- Adjustable Shoulder Sling
- Multiple Interior Pockets For Organizing
- Spot Clean/Air Dry



#35070



#30089

#30089 ANYWHERE CLEAR BELT BAG

- Made Of 30C Clear PVC
- Zippered Main Compartment
- Can Be Worn As A Fanny Pack Or Across The Chest Sling
- Back Zippered Pocket
- Detachable/Adjustable Waist Strap
- Spot Clean/Air Dry



#30076

- #30076 SEYMOUR CLEAR
BARREL BAG
- Made Of 300C PVC
 - Zippered Main Compartment
 - Detachable/Adjustable Web Shoulder Strap
 - Spot Clean/Air Dry

- #30094 CLEAR CROSSBODY BAG
- Made Of 50C PVC
 - Detachable/Adjustable Shoulder Strap
 - Zippered Main Compartment
 - Spot Clean/Air Dry

- #30078 POSH CLEAR
WRISTLET POUCH
- Made Of PVC
 - Top Zippered Closure
 - Wrist Strap Zipper
 - Spot Clean/Air Dry

- #30105 CLARITY TOILETRY BAG
- Made Of PVC And Non-Woven Trim
 - Zippered Main Compartment
 - Front Slip Pocket
 - Spot Clean/Air Dry



#30094



#30078



#30105

Contents Not Included



#30092



#30068



#30092 TRENDSETTER TOILETRY BAG

- Made Of Combo: 230D Twill Polyester & Matte Polyester Lining
- Large Zippered Main Compartment
- Interior Zippered Pocket And Slip Pockets For Organizing
- Web Carrying Handle
- Spot Clean/Air Dry

#30068 BIG EASY HANGING TOILETRY BAG

- Made Of Combo: 300D/PVC, 210D/PU & 20C PVC
- Water-Resistant
- Accommodates Full Size Toiletry Bottles
- Double Zippered Closure
- Four Compartments With Zippered Pockets For Organizing
- Front Slip Pocket
- Carrying Handle Doubles As Hanging Strap
- 360° Non-Slip Swivel Hook For Versatile Hanging Options
- Spot Clean/Air Dry



#30106



#30099



Contents Not Included

#30106 JET SET SILICONE TOILETRY BAG

- Made Of Combo: Silicone And Mesh
- Zippered Main Compartment And Carrying Handle
- Interior Mesh Pocket
- Spot Clean/Air Dry

#30099 HEMP POUCH

- Made Of 100% Sustainable Hemp
- Zippered Main Compartment
- Spot Clean/Air Dry

#30103 SLEEK SILICONE POUCH

- Made Of Silicone
- Zippered Main Compartment
- Spot Clean/Air Dry



#30103



#30070 NON-WOVEN ATTACHABLE TOTE BAG

- Made Of 100 Gram Non-Woven, Coated Water-Resistant Polypropylene
- Large, Open Main Compartment
- Hook And Loop Straps Attach To The Back Of A Wheelchair Or Stroller
- Front Slip Pocket
- Spot Clean/Air Dry



#30070



#85009 HEATHERED STASH BAG WITH LOCK

- Made Of Combo: 210D Polyester And 300D Oxford Cloth
- Zippered Main Compartment
- Smell Proof
- Interior Mesh Pocket
- Interior Compartments
- Holds Medications, Herbs, And Accessories
- Provides Added Security With A 3-Digit Lock
- Spot Clean/Air Dry

#85009





#30097

#30097 REED RPET CARD POUCH

- Made From Post Consumer Recycled Materials
- Recycled Polyester (rPET) is Obtained By Melting Down Existing Plastic Bottles And Creating New Polyester Fiber
- Inside Lining, Zipper and Split Ring Attachment Are Not RPET
- Top Zippered Closure
- Front Slip Pocket
- Interior Card Pockets
- Split Ring Attachment
- Spot Clean/Air Dry
- This Material Is Recyclable In Limited Facilities In The US. Consumers Should Check Their Local Recycling Capacities Before Placing In Their Recycling Bins.

#30107 INTREPID WATER BOTTLE POUCH

- Made Of 3MM Neoprene
- Fits 40 Oz. Tumbler
- Zippered Main Compartment
- Interior Mesh Pocket
- Adjustable Belt With Hook And Loop Closure And Rubber Grips To Prevent Sliding
- Spot Clean/Air Dry



#30107
Tumbler Not Included

COOLERS



#35071

- #35071 INTREPID WATER-RESISTANT 18-CAN COOLER BAG**
- Made Of Combo: 500D/PVC Tarpaulin And EPE Foam
 - Zippered Main Compartment With Water-Resistant Zipper
 - Front Slip Pocket
 - Daisy Chains On Each Side For Additional Storage
 - Detachable/Adjustable Shoulder Strap And Padded Web Carrying Handles
 - Holds 18 Cans Of Your Favorite Beverage
 - Spot Clean/Air Dry



#35072

- #35072 INTREPID WATER-RESISTANT 6-CAN COOLER BAG**
- Made Of Combo: 500D/PVC Tarpaulin And EPE Foam
 - Zippered Main Compartment With Water-Resistant Zipper
 - Front Slip Pocket
 - Detachable/Adjustable Shoulder Strap And Padded Web Carrying Handles
 - Holds 6 Cans Of Your Favorite Beverage
 - Spot Clean/Air Dry



#35092

Contents Not Included



#35078

#35092 RILEY RPET 15-CAN COOLER BAG

- Made From Post Consumer Recycled Materials
- Recycled Polyester (rPET) Is Obtained By Melting Down Existing Plastic Bottles And Other Material Sources To Create New Polyester Fiber
- Inside Lining, Zipper, Handle And Buckle Are Not RPET
- PEVA Lining With 5MM EPE • Double Zippered Main Compartment
- Front Pocket • Side Mesh Pocket
- Detachable/Adjustable Shoulder Strap And Carrying Handle
- Holds Up To 15 Cans Of Your Favorite Beverage
- Spot Clean/Air Dry
- This Material Is Recyclable In Limited Facilities In The US. Consumers Should Check Their Local Recycling Capacities Before Placing In Their Recycling Bins



#35078 CHILL ZONE 12-PK. COOLER BAG

- Made Of 600D Polyester
- Foil Laminated PE Foam Insulation
- Double Zippered Main Compartment
- Adjustable Shoulder Strap And Padded Web Carrying Handle
- Front Pocket With Hook And Loop Closure
- Holds 12 Pack Carton Of Your Favorite Beverage
- Spot Clean/Air Dry

#35069 HUNTINGTON HEATHERED COOLER TOTE BAG

- Made Of Combo: 300D Polyester & PVC Two Tone
- 12C Silver PEVA Lining With 3MM PE Foam
- Zippered Main Compartment With Leatherette Zipper Pulls
- Large Front Pocket With Hook & Loop Closure And Leatherette Pull Tab
- Holds Up To 24 Cans Of Your Favorite Beverage
- Spot Clean/Air Dry



#35069



#35077

#35077 HAUTE HEATHERED 16-CAN COOLER

- Made Of Combo: 600D Polyester & Heathered Gray Water-Resistant Material
- Heat Sealed PEVA Lining
- Double Zippered Main Compartment
- Double Zippered Front Pocket
- Adjustable Shoulder Strap
- Holds Up To 16 Cans Of Your Favorite Beverage
- Spot Clean/Air Dry

#35073 NICKY CUBE COOLER BAG

- Made Of Combo: 600D Polyester & EVA
- Gray PEVA Lining With 2MM EPE Foam
- Double Zippered Main Compartment
- Front Slip Pocket
- Detachable Carrying Handles Convert Into Shoulder Strap
- Spot Clean/Air Dry

#35062 FRESH FARE LUNCH COOLER

- Made Of High Density 600D Polyester
- 12C Silver PEVA Lining With 4MM PE Foam
- Double Zippered Main Compartment
- Detachable/Adjustable Shoulder Strap And Padded Carrying Handle
- Front Zippered Pocket
- Side Mesh Pocket
- Spot Clean/Air Dry





#35099



#35052



#35039

#35099 FIELD DAY COOLER LUNCH BAG

- Made Of Combo 600D Polyester, EVA And TPU
- PEVA Lining
- Double Zippered Main Compartment
- Web Carrying Handles On Top And Sides
- Top Body Hard-Cell Insulation
- Built To Hold It's Shape And Protect Your Lunch During Travel
- Holds Up To 6 Cans Of Your Favorite Beverage
- Spot Clean/Air Dry

#35052 REDUX RPET LUNCH COOLER BAG

- Made From Post Consumer Recycled Materials
- Recycled Polyester (rPET) is Obtained By Melting Down Existing Plastic Bottles And Other Material Sources To Create New Polyester Fiber
- PEVA Lining
- Zipper, Clips, Shoulder Strap And Lining Are Not rPET
- Zippered Main Compartment
- Detachable/Adjustable Shoulder Strap
- Spot Clean/Air Dry
- This Material Is Recyclable In Limited Facilities In The US. Consumers Should Check Their Local Recycling Capacities Before Placing In Their Recycling Bins.

#35039 COURTYARD COOLER LUNCH BAG

- Made Of 210D Polyester
- Foil Laminated PE Foam Insulation
- Zippered Main Compartment
- Front Pocket
- Holds 6 Cans Of Your Favorite Beverage
- Spot Clean/Air Dry



#35104

#35104 NORTHWOODS NON-WOVEN COOLER TOTE BAG

- Made Of Combo: 80 Gram Non-Woven, Coated Water-Resistant Polypropylene
- Foil Laminated PE Foam Insulation
- Zippered Main Compartment
- Front Slip Pocket
- Spot Clean/Air Dry



#35098

#35098 NORTHWOODS MINI 6-CAN COOLER TOTE BAG

- Made Of 600D Polyester
- 12C Silver PEVA Lining With 4MM PE Foam
- Zippered Main Compartment
- Large Front Slip Pocket
- Holds Up To 6 Cans Of Your Favorite Beverage
- Spot Clean/Air Dry



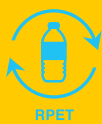
#35095 SUMMIT 24-CAN COOLER BACKPACK

- Made Of Combo: 50C Tarpaulin, 210D PU and PE Foam
- 12C Silver PEVA Lining
- Resistant To Water, Punctures, Mildew and UV Rays
- Double Zippered Main Compartment
- Front Slip Pocket • Zippered Side Pocket
- Interior Top Zippered Pocket
- Adjustable Padded Shoulder Straps And Snap-On Web Carrying Handle
- Holds Up To 24 Cans Of Your Favorite Beverage
- Spot Clean/Air Dry



#35053 BREWTUS XL COOLER BACKPACK

- Made Of Combo: 40C Tarpaulin, 300D Polyester & Polyurethane
- 12C Silver PEVA Lining • Zippered Main Compartment
- Bottle Opener On Backside
- Two Daisy Chains For Adding Extra Gear • Front Pocket
- Detachable/Adjustable Padded Shoulder Straps And Web Carrying Handles With Comfort Grip
- Holds Up To 32 Cans Of Your Favorite Beverage
- Spot Clean/Air Dry • Spot Clean/Air Dry



#30085 MATTE COOLER TOTE BAG WITH 100% RPET MATERIAL

- Made From Post Consumer Recycled Materials
- Recycled Polyester (rPET) is Obtained By Melting Down Existing Plastic Bottles And Other Material Sources To Create New Polyester Fiber
- Hook & Loop Closure
- Foil Laminated PE Foam Insulation
- Spot Clean/Air Dry
- This Material Is Recyclable In Limited Facilities In The US. Consumers Should Check Their Local Recycling Capacities Before Placing In Their Recycling Bins.

Bottle Not Included



#30081 RPET HEATHERED WINE COOLER TOTE BAG

- Made Of 300D RPET Polyester
- Recycled Polyester (rPET) is Obtained By Melting Down Existing Plastic Bottles And Other Material Sources To Create New Polyester Fiber
- Inside Lining, Zipper, Handle And Buckle Are Not rPET
- Foil Laminated PE Foam Insulations
- Adjustable Strap • Holds One Bottle Of Wine • Spot Clean/Air Dry
- This Material Is Recyclable In Limited Facilities In The US. Consumers Should Check Their Local Recycling Capacities Before Placing In Their Recycling Bin



DRAWSTRINGS & BACKPACKS



Folds Into Pouch

- #35076 ECO SLING BACKPACK
- Made From Recycled PET Bottles
 - Ergonomic Cross-Body Silhouette
 - Expandable Pocket For Phone Or Water Bottle
 - Reflective Details For Road Safety
 - Packable Into Compact Size
 - Anti-Theft Covered Zipper
 - Breathable Mesh Strap
 - Spot Clean/Air Dry



#35075 NOMAD ECO BACKPACK

- Made from Recycled PET Bottles
- Isothermal Compartment (6L)
- Phone-Camera Action Pocket
- Water & Stain Repellent
- Bottle Opener
- Water Bladder Compartment
- Reflective Details For Road Safety
- Laptop Compartment, Up To 15.6"
- 2 Elastic Side Pockets With Safety Strap
- Ventilated Horizontal Back Pads & Shoulder Straps
- Emergency Whistle
- Waterproof SBS Zipper
- Spot Clean/Air Dry

#30077 LEVEL UP LAPTOP BACKPACK

- Made Of Combo: Polyurethane, 1680D & 600D Polyester And Pongee Lining
- Zippered Main Compartment
- Padded, Adjustable Shoulder Straps And Padded Carrying Handle
- 2 Side Pockets • Front Zippered Pocket
- Padded Laptop Compartment
- Accommodates Devices Up To 15.6"
- Spot Clean/Air Dry



Contents Not Included





#35105



#35096

#35105 CLEAR BUCKLE BACKPACK

- Made Of 38C PVC
- Flap Closure Main Compartment With Buckles
- Front Zippered Pocket
- Adjustable Padded Shoulder Straps And Web Handle
- Two Side Mesh Pockets
- Spot Clean/Air Dry

#35096 PICKLEBALL CARRYALL BACKPACK

- Made Of 600D Polyester
- Zippered Main Compartment
- Adjustable Shoulder Straps And Web Carrying Handle
- Two Front Zippered Pockets
- Zippered Back Pocket
- Side Mesh Pocket
- Fits 2 Pickleball Paddles In Main Pocket
- Pickleball Paddles And Balls Not Included
- Spot Clean/Air Dry



#35097



#35063

#35097 TRAVELERS BACKPACK

- Made Of Combo: 600D High-Density Oxford Polyester, PVC, 210D Lining And Backed 600D On Bottom
- Zippered Main Compartment
- Padded Adjustable Shoulder Straps And Web Carrying Handle
- Adjustable Compression Straps To Attach Gear Or Reduce Footprint Of The Bag
- 2 Side Pockets
- Interior Pockets And Compartments For Organizing
- Padded Laptop Compartment
- Accommodates Devices Up To 15.6"
- Spot Clean/Air Dry

#35063 MIDTOWN MINI BACKPACK

- Made Of Combo: 210D Polyester With Polyurethane Backing
- Zippered Main Compartment
- Adjustable Shoulder Straps And Web Carrying Handle
- Large Front Zippered Pocket
- Spot Clean/Air Dry

HEADWEAR & ACCESSORIES



#15024



#15037

#15024 CADDIE COTTON TWILL ROPE CAP

- Garment Washed Cotton Twill Fabric With Rope Accent
- 5 Panel, Mid Profile
- Adjustable Plastic Snap Tab Closure
- Structured Crown & Pre-Curved Visor

#15037 CONVOY TRUCKER CAP

- 100% Polyester Foam Crown With Rope Accent
- 5 Panel, High Profile
- Poplin Sweatband And Seamtape
- Mesh Back With Adjustable Plastic Snap Tab Closure
- Structured Crown & Pre-Curved Visor



#15021



#15022



#15023

#15021 THE HAULER CLASSIC TRUCKER

- 60% Cotton/40% Nylon
- 6 Panel, Medium Profile
- Cotton Sweatband
- Mesh Back With Adjustable Plastic Snap Tab Closure
- Structured Crown & Pre-Curved Visor

#15022 STROKE PLAY ROPE CAP

- 92% Performance Polyester, 8% Spandex
- 5 Panel, Mid Profile • Rope Accent
- Adjustable Plastic Snap-Tab Back Closure
- Structured Crown & Pre-Curved Visor

#15023 MATCH PLAY MESH BACK ROPE CAP

- 92% Performance Polyester, 8% Spandex
- 5 Panel, Mid Profile • Rope Accent
- Adjustable Plastic Snap-Tab Back Closure
- Structured Crown & Pre-Curved Visor

#15028 SHANE FLAT BILL CAP

- 100% Polyester
- 6 Panel, High Profile
- Adjustable Plastic Snap Tab Closure
- Structured Crown & Flat Bill Visor



#15028

#15027 FAIRWAY 5 PANEL CAP

- 100% Polyester
- 5 Panel, Low Profile
- Adjustable Plastic Snap Tab Closure
- Structured Crown & Pre-Curved Visor



#15027

#15042 STRIKE ZONE BASEBALL CAP

- 65% Polyester/35% Cotton
- 5 Panel, Mid Profile
- Adjustable Plastic Snap Tab Closure
- Structured Crown & Pre-Curved Visor



#15042

#15036 ODYSSEY ROPE CAP

- 95% Nylon, 5% Spandex
- Water-Resistant
- 6 Panel, High Profile
- Rope Accent
- Mesh Sweatband And Poplin Seamtape
- Perforated Back Panels For Breathability
- Adjustable Plastic Snap Tab Closure
- Structured Crown & Flat Bill Visor



#15029 TRAILHEAD 7-PANEL CAP

- 100% Polyester
- 7 Panel, Low Profile
- Elastic Strap With Plastic Buckle Closure
- Unstructured Crown & Flat Visor

#15041 CORDUROY DAD CAP

- 100% Polyester Corduroy
- 5 Panel, High Profile
- Flat Visor
- Adjustable Self-Material Strap With Sliding Buckle



#15038 CORDUROY BUCKET HAT

- 100% Polyester Corduroy
- Fashionable & Functional
- Foldable For Easy Travel & Storage
- One Size Fits Most
- Unisex





#15039 TERRY BUCKET HAT

- 190GSM Poly Terry And Poly Laminated Lining
- Fashionable & Functional
- Foldable For Easy Travel & Storage
- One Size Fits Most
- Unisex



#15040 BASELINE FOAM VISOR

- 100% Polyester
- Pro-Stitching On Front Pre-Curved Visor
- Adjustable Plastic Snap Tab Closure



#15035

- #15035 - 22" X 22" BANDANA
- 100% Cotton
 - One Size Fits Most



- #8054 - 21" X 21" BANDANA
- 100% Polyester
 - One Size Fits Most

#8054

LEISURE & OUTDOOR

#8068



#8069



#8067



#8068 - 11" X 18" RALLY TOWEL

- Poly Microfiber
- Features Edge-To-Edge Full Color Imprint
- Great For The Beach, Boating Or Any Outdoor Water Activity
- PATENT PRODUCT - US PATENT # 10,745,833 B2

#8069 - 28" X 58" BEACH TOWEL

- 52/48 Poly-Cotton
- Features Edge-To-Edge Full Color Imprint
- Great For The Beach, Boating Or Any Outdoor Water Activity
- PATENT PRODUCT - US PATENT # 10,745,833 B2

#8067 - 30" X 60" BEACH TOWEL

- 52/48 Poly-Cotton
- Features Edge-To-Edge Full Color Imprint
- Great For The Beach, Boating Or Any Outdoor Water Activity
- PATENT PRODUCT - US PATENT # 10,745,833 B2

#6088 - 15" X 18" MICROFIBER RALLY TOWEL

- 225 GSM Polyester Microfiber
- Cotton Alternative With Cotton Feel
- Serge Hem



#6088



#40003



#99971



Back



#40003 SINGLE PICKLEBALL PADDLE
• Made Of MDF With Polyurethane Grip

#99971 PICKLEBALL KIT
• Kit Includes #35096 Pickleball Carryall Backpack And #40003 Single Pickleball Paddle
• Price Includes 1-Color/1-Location Imprint On Each Item


TYPE-C

#20051 - 3-IN-1 PORTABLE AIR PUMP
• Features An Air Pump, Camping Light And Can Be Used As A 2A Emergency Charger
• Includes One Type-C Cable, Instructions And 5 Nozzles • Solar Powered Light
• Convenient Hook For Easy Hanging
• Includes 3.7V and 2000 mAh Lithium Batteries
• 3 Hour Charging Time • Output: 5 Volts/2 Amp



*Items Not Included

#20051

#90 FULL COLOR MARSHLAND CAMO KAN-TASTIC

- Made Of Laminated Open Cell Foam
- Folds Flat For Pocket Or Purse Storage
- Made In The USA

#80036 EASY GRIP CAN COOLER

- Made Of Laminated Open Cell Foam
- Folds Flat For Pocket Or Purse Storage
- Elastic Strap Handle



#90



#80036





Phone Not Included

#6323



#50159

Bottle Not Included



#30104

Bottle Not Included



#6323 CELL PHONE SEAT® CUP HOLDER

- Made Of ABS
- Hands-Free Cell Phone Mount
- Place Phone On Mount To Secure Your Phone In Place
- Fits In Vehicle Cup Holder Without Blocking The Cup Holder
- Holds A Variety Of Phone Sizes Vertically Or Horizontally For Easy Viewing
- Made In The USA

#50159 WINE BOTTLE COOLER

- Made Of Nylon With Gel Insulation
- Freeze Before Use To Keep Your Wine Cool
- Holds Standard 750mL Wine Bottle
- Spot Clean/Air Dry

#30104 ON THE GO WINE TOTE

- Made Of 5MM Two Tone Neoprene
- Zipper For A Snug Fit
- Detachable Carrying Handle
- Back Pocket
- Fits Standard 750mL Wine Bottle
- Spot Clean/Air Dry



#45006 - 41" ARC UMBRELLA WITH 100% RPET CANOPY & BAMBOO HANDLE

- Made From Post Consumer Recycled Materials
- Recycled Polyester (rPET) is Obtained By Melting Down Existing Plastic Bottles And Other Material Sources To Create New Polyester Fiber
- Bamboo Handle and Steel Frame Are Not rPET
- Manual Open • Telescopic Folding Umbrella • Steel Frame
- Wrist Strap • Matching Sleeve • Bamboo Handle • 10" Folded
- This Material Is Recyclable In Limited Facilities In The US. Consumers Should Check Their Local Recycling Capacities Before Placing In Their Recycling Bins.



#7262



#6073

#7262 ALIGNMENT BALL MARK

- 2022 PGA Show BEST NEW PRODUCT Winner
- USAGA/R&A Approved
- Two-Spike Ball Marker Connected To A 360° Rotating Alignment Device
- Makes Putting Faster And More Accurate
- Featured In Golf Magazine

#6073 GRIP DRY WAFFLE GOLF TOWEL

- Made Of Microfiber Polyester
- Triangle Fold With Leatherette Header And Plastic Swivel Hook
- Super Quick-Absorbing And Quick-Drying Towel



#7528



Back

Contents Not Included



#7528 TRAVEL LUGGAGE BEVERAGE CADDY

- Made Of 300D Heathered Polyester
- Trolley Sleeve Slides Over Luggage Handle
- Hook & Loop Closure
- Two Mesh Bottom Cup Holders
- Fits Most Tumblers And Water Bottles
- Two Back Slip Pockets For Phone, Charger, Sunglasses, Etc.
- Folds Flat For Easy Travel And Storage



#9753

#9753 OUTBOUND BAMBOO LUGGAGE TAG

- Bamboo ID Tag
- Leatherette Strap With Copper Plated Buckle Closure
- Attaches Securely To Luggage, Backpacks, Laptop Cases, Etc.



Back



#6297 JAGGER RECYCLED FRAME SUNGLASSES

- Frames Are Made Of rABS
- UV400 Lenses Provide 100% UVA And UVB Protection



#6291 BENTLEY RECYCLED FRAME SUNGLASSES

- Reflective Lenses
- Frames Are Made Of rABS
- UV400 Lenses Provide 100% UVA And UVB Protection



#6287 COLORBLOCK MALIBU SUNGLASSES

- Made Of ABS/PMMA Material
- UV400 Lenses Provide 100% UVA And UVB Protection



#55116



Sunglasses Not Included



#6299

#55116 CLEANING CLOTH WITH 100% RPET MATERIAL IN CASE

- Made From Post Consumer Recycled Materials
- Recycled Polyester (rPET) is Obtained By Melting Down Existing Plastic Bottles And Other Material Sources To Create New Polyester Fiber
- 6" W x 6" H Cloth • 100% Polyester
- Great For Cleaning Glasses And Device Screens
- This Material Is Recyclable In Limited Facilities In The US. Consumers Should Check Their Local Recycling Capacities Before Placing In Their Recycling Bins.

#6299 - .67 OZ SCREEN CLEANER AND SPRAY

- Microfiber Cloth On Back Of Spray
- Great For Cleaning Glasses And Device Screens

BLANKETS



#8009



#8066

#8009 PACKABLE BLANKET WITH CARRYING CASE

- Large 55" x 59" 100% Quilted Polyester
- Zippered Carrying Case With Adjustable Shoulder Strap & Web Handle
- Ideal For Outdoor Use
- Surface Washable

#8066 RIVERSIDE ROLL-UP BLANKET WITH CARRYING HANDLE

- 48" x 57" 200GSM Fleece With 190T Polyester Backing
- Detachable/Adjustable Shoulder Strap With Two Buckle Closure And Web Carrying Handle
- Front Pocket
- Surface Washable



#8008



#10200

- #8008 FAUX FUR THROW
- 100% Polyester
 - Surface Washable

- #10200 - 60" X 45" DYE SUBLIMATED BLANKET
- 100% Polyester Micro Plush 230GSM
 - Features Edge-To-Edge Imprint
 - Heat Penetrated Imprint Prints Photo Real Images

HOUSEWARES

#75039 FLAVOR FAVE BENTO BOX

- Made Of ABS And Silicone
- Side Locks Keep Lid Secure
- 3 Compartments And Removable Divider To Keep Food Separate And Safe
- Meets FDA Requirements
- BPA Free
- Hand Wash Recommended



#75039



#75044

#75044 MICROWAVABLE STAINLESS STEEL FOOD CONTAINER

- Durable Lid With Silicone Ring And Side Clips For A Tight Seal
- Meets FDA Requirements
- BPA Free
- Hand Wash Recommended

#75048 REUSABLE ICE PACK

- Freezable Non-Toxic Gel Pack Keeps Food & Beverages Cold
- Leak Proof Alternative To Traditional Ice Bags
- Ideal For Use In Coolers And Insulated Lunch Bags



#75048



#75043



#75054



#75047

Bottle Not Included

**#75043 BAMBOO SERVING TRAY
WITH CERAMIC BOWLS**

- Recessed Bamboo Serving Tray
- Three Ceramic Bowls For Dips, Snacks, Etc.
- Wipe Clean With Damp Cloth

**#75054 BAMBOO & RECYCLED
FELT COASTER SET**

- Set Of 4 Recycled Felt Coasters
In Bamboo Holder
- Great For Home Or Office

**#75047 BAMBOO WINE BOTTLE STAND
WITH CORKSCREW**

- Holds Standard 750 mL Wine Bottle
- Built-In Corkscrew



#85013



#99230



#85017

#85013 CENTER PEACE SCENTED CANDLE

- Soda Lime Glass
- Soy Wax With Vanilla Fragrance
- Bamboo Lid
- Single Wick
- Non-Toxic And Burns Cleaner Than Paraffin With No Petrol-Carbon Soot
- Longer Burning And More Efficient Than Paraffin

#99230 BAMBOO SOY CANDLE WITH FULL COLOR LABEL

- Soda Lime Glass
- Soy Wax With Lavender or Vanilla Fragrance
- Single Wick
- Non-Toxic And Burns Cleaner Than Paraffin With No Petrol-Carbon Soot
- Longer Burning And More Efficient Than Paraffin

#85017 MINI CANDLE WITH BAMBOO LID

- Soda Lime Glass
- Soy Wax With Lavender or Vanilla Fragrance
- Single Wick
- Non-Toxic And Burns Cleaner Than Paraffin With No Petrol-Carbon Soot
- Longer Burning And More Efficient Than Paraffin



#50071

- #50071 - 67 OZ. MARSTON STAINLESS STEEL PITCHER**
- Stainless Steel Outer and Inner
 - Powder Coated Finish
 - Snap-On, Spill-Resistant Thumb-Slide Lid
 - Double Wall Construction For Insulation Of Hot Or Cold Liquids
 - Meets FDA Requirements • BPA Free
 - Hand Wash Recommended



#2312

- #2312 - 40 OZ. STAINLESS STEEL PET BOWL**
- Double Wall Construction For Insulation & Durability
 - Suitable For Water Or Food • Non-Slip Bottom
 - Hand Wash Recommended



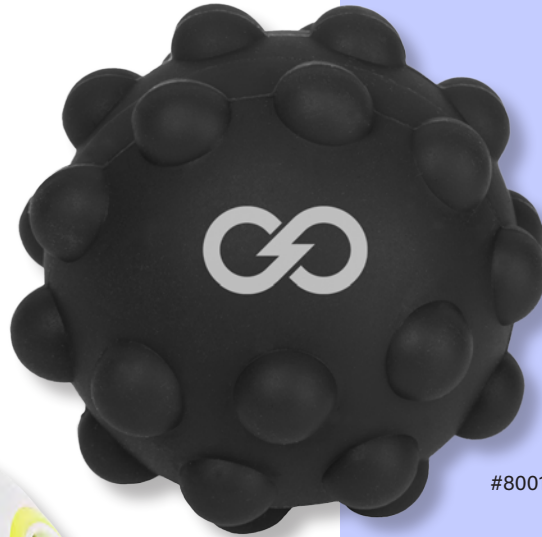
#75045

- #75045 BBQ MEAT THERMOMETER**
- Ultra Thin Probe With Ceramic Handle
 - Can Withstand Heat Up To 500°F
 - Store And Charge Thermometer In Charging Dock
 - Slide To Lock/Unlock Charging Dock
 - Charging Dock Requires 2 AA Batteries, Included
 - Download App And Pair With Thermometer To Adjust Settings
 - Maximum Timer Setting 99 Hours And 99 Minutes
 - 5 Preset Temperatures From Rare To Well Done
 - 9 Preset Temperatures For A Variety Of Proteins Including Pork, Beef And Fish • Easy To Clean
 - Hand Wash Recommended

PLUSH & NOVELTIES

#80011 PUSH POP BOUNCING BALL

- Made Of Silicone
- Press Bubbles, Squeeze Or Bounce To Relieve Stress
- Make Your Own Pattern By Pressing On Different Bubbles Or Just Press For Fun
- Encourages Focus And Self-Soothing For Users With Anxiety, Attention Disorders And More
- Perfect For Reducing Stress And Boredom
- Fun For All Ages 5+



#80011



#80015



#80015 STRESS POP BALL GAME

- Made Of ABS
- Fidget Balls Inside To Match Colored Ring
- Fun Stress Reliever
- Encourages Focus And Self-Soothing For Users With Anxiety, Attention Disorders And More
- Perfect For Reducing Stress And Boredom
- Fun For All Ages (5+)



#80010 FLIP & SLIDE MAGNETIC STRESS RELIEVER

- Two Magnetic Discs With Smooth Silicone Front And Textured Thumb Grip On Back
- Encourages Focus And Self-Soothing For Users With Anxiety, Attention Disorders And More
- Slide, Flip, Spin Or Snap To Reduce Stress And Boredom
- Fun For All Ages (5+)



#80009

#80009 WHIRL WHEEL FIDGET SPINNER

- Spin Between Thumb And Middle Finger
- Fun Stress Reliever
- Encourages Focus And Self-Soothing For Users With Anxiety, Attention Disorders And More
- Perfect For Reducing Stress And Boredom
- Fun For All Ages (5+)

#723 TOP SPINNER FIDGET TOY

- To Spin Ball, Pull Handle Up, Push Down & Release
- Fun Stress Reliever
- Encourages Focus And Self-Soothing For Users With Anxiety, Attention Disorders And More
- Perfect For Reducing Stress And Boredom
- Fun For All Ages (5+)

#80012 HAND GRIP EXERCISER

- Helps Improve Dexterity And Strength In Fingers, Hands And Forearms
- Carabiner Attachment



#723



#80012



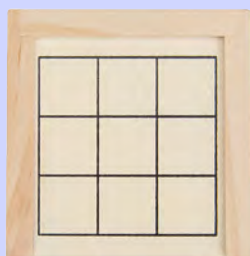
#80017 WRIST DISK

- Made Of Silicone • Fun Flying Disk For Your Wrist
- Wear As A Bracelet Or Toss & Stretch To Reduce Stress
- Encourages Focus And Self-Soothing For Users With Anxiety, Attention Disorders And More
- Perfect For Reducing Stress And Boredom • One Size Fits Most

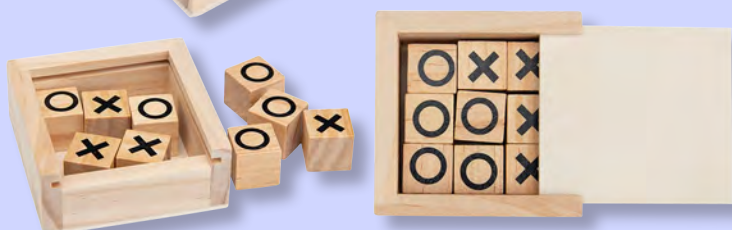


#80013 MINI CORN HOLE GAME

- Includes 1 Game Board With Folding Stand,
- 2 Black Mini Bean Bags And 2 Gray Mini Bean Bags
- Store Bean Bags Underneath Game Board When Not In Use



Bottom Of Lid



#80014 MINI TIC-TAC-TOE GAME

- Made Of Pine Wood • Includes 9 Tiles And Game Board
- Slide Out Game Board For Tile Storage



Standard Imprint Area

Optional Imprint Area

#80016 PLAYING CARD & DICE SET

- Playing Cards Made Of Kraft Paper. Box Made Of Theaceae Wood, Plywood And Pine Wood.
- Set Includes One Deck Of Playing Cards And Five Dice
- Slide Out Lid For Card And Dice Storage



#284



#284 HANDS-FREE RECHARGEABLE NECK FAN

- Bladeless & Lightweight
- Side And Back Vents for 360° Air Flow
- Push Button Speed Settings – High, Medium & Low
- Features Micro-USB Input (Cord Included)
- 1200 mAh Lithium Polymer Battery Included
- Approximately 3 Hours Running Time Before Next Charge



#289 PORTABLE REFRIGERATION FAN

- Refrigeration Plate Cools Air As It Circulates
- Over Current, Over Charge & Over Discharge Protection
- Push Button On/Off
- Push Button Speed Settings – High, Medium & Low
- Features Micro-USB Input (Cord Included)
- 2200 mAh Lithium Polymer Battery Included
- LED Indicator Lights
- Carabiner Attachment

#289





#LAN-DS75JH SMOOTH DYE-SUBLIMATION
LANYARD WITH J-HOOK

- 36" Polyester Satin Lanyard
- Includes Plastic J-Hook Attachment

#LAN-DS75JH



#80065 RETRACTABLE BADGE
HOLDER WITH CARABINER

- 35" Retractable Cord
- Clip On Backside



#1294

#1294 - 6" SQUISHY BEAR

#1295 - 6" SQUISHY DOG

- Customize On Front Pouch
- These Cute, Cuddly Plush Animals Are A Great Way To Show Your Logo And Get Your Message Across



#1295



#1296

#1296 - 6" SOOTHING BUDDY HOT & COLD BEAR

- Filled With 170G Flaxseed & Cotton Blend
- Warm In Microwave Or Cool In Freezer Before Use To Soothe Aches & Pains
- Fast 1-2 Minute Heating
- Remove Accessories Before Placing In Microwave
- Please Visit Our Website For Optional Accessories

AMENITIES & PERSONAL CARE



#85015 HOT/COLD PACK

- Therapeutic Gel Pack Applies Heat Or Cold To Sore Muscles
- Microwave And Freezer Safe
- Reusable And Non-Toxic



#85010 NECK & SHOULDER WRAP

- Made Of Velboa And Flaxseed
- Can Be Microwaved To Relax Neck And Shoulder Muscles Or Frozen In Freezer To Use As A Cold Pack For Neck And Shoulders
- Microwave And Freezer Safe
- Includes Pouch • Reusable



#85011

#85011 REUSABLE LINT ROLLER

- Convenient Travel Size
- Wash Lint Roller Between Uses With Soap And Water



#85012 - 5-PIECE MANICURE SET

- Kit Includes: Diagonal Nail Clipper, Nail File, Scissors, Nail Clipper And Cuticle Pusher



#85012



TOOLS, LIGHTS & KEY TAGS



#20048



#20057



#20047



#20057 MAGNIFIER AND LIGHT

- Handy Magnifier Light With 3x Magnification
- Comfort Grip
- LED Light Automatically Turns On When Magnifier Is Extended And Turns Off When Closed
- Button Cell Batteries Included



TYPE-C

#20048 BAMBOO RECHARGEABLE LED FLASHLIGHT

- Extra Bright White LED Light
- Push Button To Turn On/Off
- 3 Light Settings - High, Low and Flashing
- Recharges Via Type C Cable

#20047 BAMBOO FLASHLIGHT

- 9 Extra Bright White LED Lights
- Push Button To Turn On/Off
- 3 Replaceable AAA Batteries Included



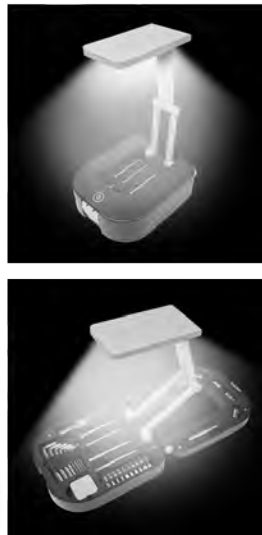
TYPE-C

#20044 RECHARGEABLE WORK LIGHT

- Extra Bright White COB Work Light And LED Flashlight
- Push Button To Turn Light On/Off
- Molded Grip Handle For Easy Holding
- Ideal For Outdoor or Household Projects
- Recharges Via Type C Cable
- Includes A Type-C Charging Cable
- 1200mAh Battery Included



#20044



#20056 - 30-PIECE TOOL KIT WITH LIGHT

- Includes Extension Bar, Knife, Screwdriver Handle, Precision Screwdriver, Measuring Tape, Eight Piece Key Hex, Four Piece Sockets, Ten Piece Screwdriver Bits
- Key Hex Pieces Include 1.5, 2, 2.5, 3, 4, 5, 5.5 and 6 MM Bits
- Screwdriver Bits Include PH1, PH2, PZ1, PZ2, SL5, SL6, T10, T15, T20 And An Adapter Bit
- 3 Light Settings - Day Light, Warm Light, Day Light + Warm Light
- Extra Bright White LED Light
- Push Button To Turn On/Off And Long Press Power Button To Adjust Light Intensity
- 3 Replaceable AA Batteries Included

#20046 BAMBOO TAPE MEASURE

- 5' Retractable Tape With Push Button Locking Mechanism
- Metric/Inch Scale
- Push Button Retractable, Auto Lock



#20046



Back

#20050

#20050 BAMBOO LEVEL WITH BOTTLE OPENER

- Metal Bottle Opener





#20055



#20054



#20049



#20053

#20055 BAMBOO KEY TAG
 • Made Of Bamboo And Zinc Alloy
 • Split Ring Attachment

#20054 JOCELYN BAMBOO KEY TAG
 • Made Of Bamboo And Zinc Alloy
 • Split Ring Attachment

#20049 CHILTON KEYCHAIN
 • Swivel Trigger Snap Hook
 And Split Ring Attachment

#20053 HARLOW KEY TAG
 • Made Of Bamboo And Zinc Alloy
 • Split Ring Attachment

DESK ACCESSORIES



#55238



Inside Of Lid



Items Not Included



#55235

#55238 RPET PENCIL BOX

- Made Of rPET Felt And Bamboo
- rPET Felt Is Made From Post Consumer Recycled Materials
- Recycled Polyester (rPET) is Obtained By Melting Down Existing Plastic Bottles And Other Material Sources To Create New Polyester Fiber
- Holds Pens, Pencils, Scissors, Erasers And Other Essentials
- Lid Of Pencil Box Features Inch And Centimeter Ruler Markings
- Elastic Band To Keep Lid On
- Inside Of Pencil Box Features Phone Stand
- Phone Stand Holds A Variety Of Phone Sizes For Easy Viewing

#55235 DESKTOP NOTEPAD AND ORGANIZER

- 100 Lined Pages
- Includes 10 Paper Clips
- Matching Pen Has Paper Barrel
- Sticky Flags In 6 Neon Colors
- Top Flap Opens And Closes To Conceal Pen, Paper Clips, Sticky Notes And Sticky Flags





#55237



#55237

Foldable

Dry Erase Board &
One Dry Erase Pen Included



#55241

10w-15w

TYPE-C

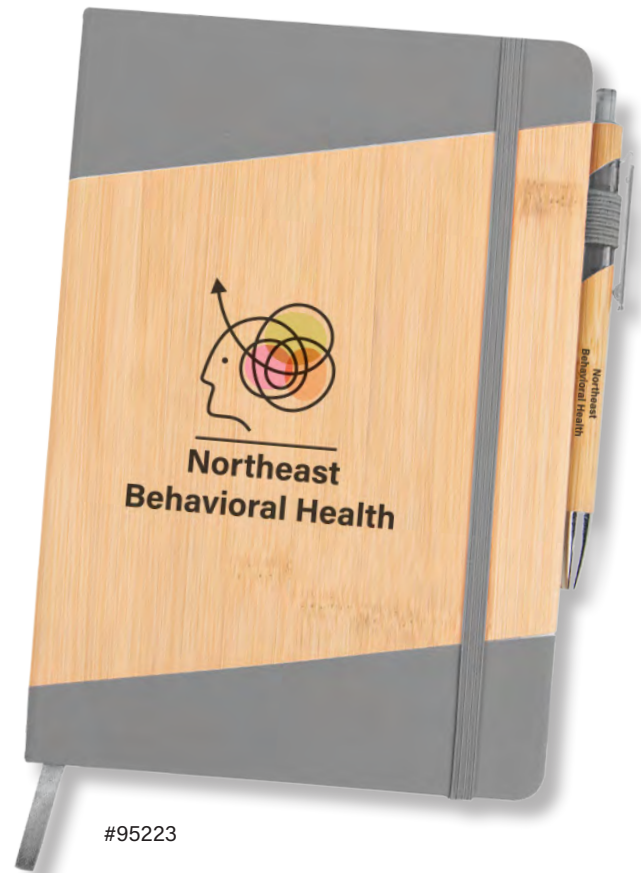
- #55237 WIRELESS CHARGING DESK ORGANIZER WITH DRY ERASE BOARD**
- Charge Qi Enabled Devices Wirelessly By Placing Compatible Device On Top Of Charging Pad
 - Features A USB Type-C Input (Cord Included)
 - Output: Phone: 15W, Earbuds: 5W • Includes Dry Erase Board
 - Includes Dry Erase Marker With Eraser On Cap • Built In Pen Holder • Foldable
 - Please Note That Some Computer And Laptop USB Ports May Not Supply Enough Power To Charge A Device Using This Charging Pad.
 - Apple is a trademark of Apple Inc., registered in the U.S. and other countries.

- #55241 - 12" BAMBOO RULER**
- Made Of Bamboo

JOURNALS & NOTEBOOKS



#65030



#95223



#65033

#65030 BAMBOO LOOK JOURNAL

- 80 Page Lined Notebook
- Matching Strap Closure, Bookmark And Pen Loop
- Bamboo Look Polyurethane Cover

#95223 BAMBOO JOURNALING SET

- Kit Includes #11980 Willow Bamboo Pen And #65030 Bamboo Look Notebook.
- Pricing Includes 1-Color/1-Location Imprint On Each.

#65033 - BAMBOO RPET NOTEBOOK

- Cover Made From Post Consumer Recycled Materials And Bamboo
- Recycled Polyester (rPET) is Obtained By Melting Down Existing Plastic Bottles And Other Material Sources To Create New Polyester Fiber
- 80 Page Lined Notebook
- Matching Bookmark, Strap Closure And Pen Loop



RPET



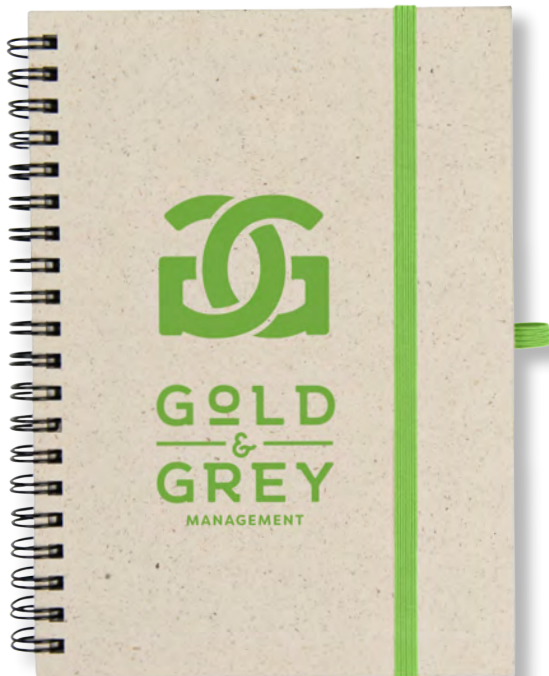
#65039 - EXPLORER RPET JOURNAL

- Cover Made From Post Consumer Recycled Materials
- Recycled Polyester (rPET) Is Obtained By Melting Down Existing Plastic Bottles And Other Material Sources To Create New Polyester Fiber
- 50 Page Lined Notebook



#65038 - FIELD RPET JOURNAL

- Cover Made From Post Consumer Recycled Materials
- Recycled Polyester (rPET) Is Obtained By Melting Down Existing Plastic Bottles And Other Material Sources To Create New Polyester Fiber
- 50 Page Lined Journal



Phone Not Included

#65034 NATURAL PAPER SPIRAL NOTEBOOK

- 70 Page Lined Notebook
- Recycled Paper Pages
- Elastic Strap Closure And Pen Loop

#65028 RPET NOTEBOOK WITH PHONE HOLDER

- Cover Made From Post Consumer Recycled Materials
- Recycled Polyester (rPET) Is Obtained By Melting Down Existing Plastic Bottles And Other Material Sources To Create New Polyester Fiber
- 80 Page Lined Notebook
- Recycled Paper Pages With Recycled Logo
- Fold Cover To Use As A Phone Stand
- Matching Strap Closure And Pen Loop



#99913



#65024



#99913 RPET JOURNAL SET

- Kit Includes #65022 Lineage rPET Journal And #436 rPET Trenton Pen
- Pricing Includes 1-Color/1-Location Imprint On #65022 Lineage rPET Journal And #436 rPET Trenton Pen

#65024 JOURNAL NOTEBOOK WITH STICKY NOTES & FLAGS

- 80 Page Lined Notebook • Matching Pen With Paper Barrel
- Sticky Notes • Sticky Flags In 5 Neon Colors • Card Holder
- Matching Strap Closure And Pen Loop
- Polyurethane Cover

#65025 PARAGON PADFOLIO WITH 100% RPET MATERIAL

- Cover Made From Post Consumer Recycled Materials
- Recycled Polyester (rPET) is Obtained By Melting Down Existing Plastic Bottles And Other Material Sources To Create New Polyester Fiber
- Includes 30 Page 8 1/2" x 11 1/2" Lined Writing Pad
- Magnetic Snap Closure • Interior Pocket & Card Holder
- Matching Pen Loop



#65025



WRITING INSTRUMENTS



#11146 - 6-PIECE RECTANGULAR CRAYON SET

- Crayon Colors Include Black, Blue, Green, Orange, Red And Yellow



#10171 - 24-PIECE CRAYON SET

- Colors Included Red, Dark Red, Pink, Dark Pink, Orange, Dark Orange, Light Orange, Yellow, Dark Yellow, Green, Dark Green, Fruit Green, Lime Green, Blue, Light Blue, Purple, Dark Purple, Light Purple, Brown, Dark Brown And Grey.



#11980 WILLOW BAMBOO PEN

- Plunger Action



#11989 RECYCLED ALUMINUM PEN WITH BAMBOO PLUNGER

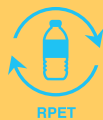
- Plunger Action
- Pen Barrel Is Made Of Recycled Aluminum



#11993 BAMBOO MULTI-FUNCTION TOOL PEN

- Twist Action • Stylus On Top
- Twist Off Stylus Top To Access Screwdriver Bit
- 1 Flat Head And 1 Phillips Head Bit
- Features Level And 7cm Ruler • Ballpoint Pen





RPET



#11991 RPET DART PEN

- Plunger Action
- Made From Post Consumer Recycled Materials
- Recycled Polyester (rPET) is Obtained By Melting Down Existing Plastic Bottles And Other Material Sources To Create New Polyester Fiber

#11988 MILK CARTON PEN

- Made Of Recycled Plastic From Milk Cartons
- Plunger Action

#11277 SPECKLE PEN

- Plunger Action
- Terrazzo Design

#11777 DECLAN PEN

- Pen Barrel Is Made Of Recycled Aluminum
- Twist Action



#10170 - 3-IN-ONE PEN WITH STYLUS

- 3 Ink Colors
- Writes In Black, Blue And Red
- Stylus On Top
- Unique Grip Design



#11185 - 4-IN-ONE PENCIL AND PEN

- 3 Ink Colors And One Mechanical Lead
- Writes In Black, Blue, Red And Pencil
- Rubber Grip For Writing Comfort And Control



#11982 DA VINCI INKLESS PENCIL & INK PEN

- Aluminum Pen
- Inkless Pencil And Ink Pen In One



#11986 RIPPLE GEL PEN

- Plunger Action
- Smooth Rubberized Finish
- Medium Point Gel Pen



#11176 SPIN TOP PEN WITH STYLUS

- Plunger Action • Aluminum Pen
- Stylus On Top • Spin Top
- Perfect For Reducing Stress And Boredom
- Encourages Focus And Self-Soothing For Users With Anxiety, Attention Disorders And More



#13978 SOHO INCLINE STYLUS PEN

- Plunger Action
- Rubber Grip For Writing Comfort And Control
- Stylus On Top



#11984 DOT PEN WITH STYLUS

- Plunger Action
- Upper Barrel Made From Recycled Aluminum
- Aluminum Pen • Stylus On Top
- Smooth Rubberized Finish
- Unique Grip Design



#11555 KNOX STYLUS PEN

- Plunger Action
- Rubberized Aluminum Pen
- Unique Grip Design
- Stylus On Top



Sleek
WRITE

#11981 SONNIE RUBBERIZED SLEEK WRITE PEN

- Plunger Action
- Smooth Rubberized Finish
- Sleek Write Low Viscosity Ink
- Stylus On Top



#11990 JAZZY GEL PEN WITH STYLUS

- Smooth Rubberized Finish
- Stylus On Top
- Removable Cap



#11983 ALOHA GEL PEN

- Medium Point Gel Pen
- Removable Cap



#11159 SANTA CRUZ VELVET TOUCH GEL PEN

- Smooth Rubberized Finish
- Removable Cap